

## Lamp measurement report – 17 Jan 2010

### Downlight D1515 740

by

Luxerna

*Photo courtesy by www.OliNo.org*



## Lamp measurement report – 17 Jan 2010

### Summary measurement data

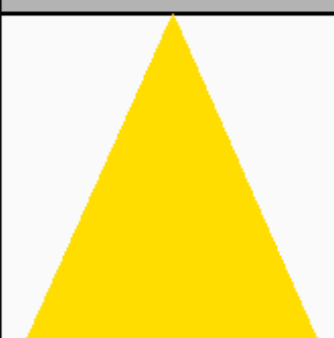
parameter	meas. result	remark
<u>Color temperature</u>	3082 K	Warm white
Luminous intensity $I_v$	1443 Cd	Measured straight underneath the lamp
Beam angle	45 deg	Valid for all C-angles as there is symmetry along the 1st axis.
Power P	20.2 W	
Power Factor	0.95	For every 1 kWh net power consumed, there has been 0.3 kVAhr for reactive power.
Luminous flux	1070 Lm	
Luminous efficacy	53 Lm/W	
CRI_Ra	68	Color Rendering Index.
Coordinates chromaticity diagram	x=0.4385 and y=0.4175	
Fitting	230V	It is a downlighter used with a separate current source.
PAR-value	12.0 $\mu\text{Mol/s/m}^2$	The number of photons seen by an average plant when it is lit by the light of this light bulb. Value valid at 1 m distance from light bulb.
PAR-photon efficacy	0.4 $\mu\text{Mol/s/W}_e$	The total emitted number of photons by this light, divided by its consumption in W. It indicates a kind of efficacy in generating photons.
S/P ratio	1.2	This factor indicates the amount of times more efficient the light of this light bulb is perceived under scotopic circumstances (low environmental light level).
D x H external dimensions	168 x 58 mm	External dimensions of the lamp (D = diameter).

## Lamp measurement report – 17 Jan 2010

D luminous area	92 mm	Dimensions of the luminous area (used in Eulumdat file). This is equal to the surface of the glass on the front.
General remarks		<p>The ambient temperature during the whole set of measurements was 24-26.5 deg C. The maximum temperature of the tube light gets about 24 degrees hotter than ambient.</p> <p>Warm up effect: during the warm up time the illuminance decreases with ~5 % and the consumed power with ~4 %.</p> <p>Voltage dependency: the power consumption and illuminance do not depend on the voltage when it is varied from 200 - 250 V.</p>

## Lamp measurement report – 17 Jan 2010

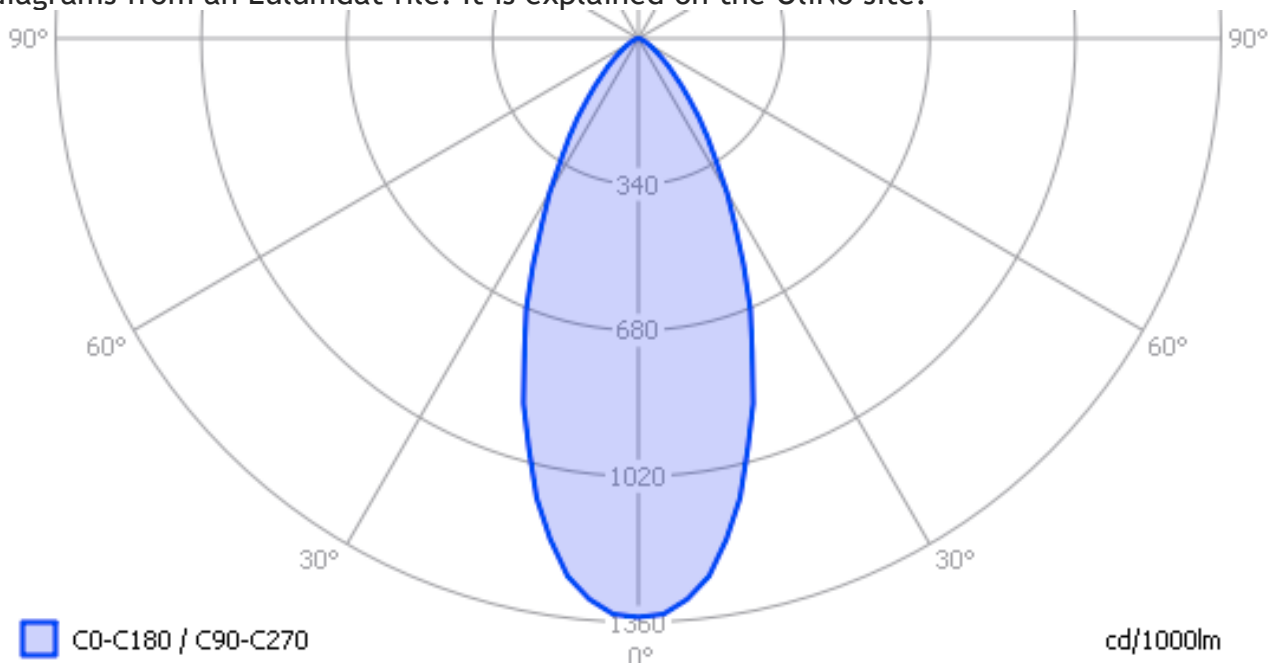
### Overview table

m.	Ø 50%		CO-180: 45° C90-270: 45°	E (lux)	Luminaire Efficacy
	CO-180	C90-270			53 (lumens per Watt)
0.25	0.21	0.21		23085	Half-peak diam CO-180
0.5	0.42	0.42		5771	0.84 x diameter(m)
1	0.84	0.84		1443	Half-peak diam C90-270
1.5	1.26	1.26		641	0.84 x diameter(m)
3	2.51	2.51		160	Illuminance
4	3.35	3.35		90	1443 / distance <sup>2</sup> (lux)
5	4.19	4.19		58	Total Output
					1070 (lumens)

The overview table is explained on the OLiNo website. Please note that this overview table makes use of calculations, use this data with care as explained on the OLiNo site. E (lux) values are not accurate, when within 5 x 92 mm = 460 mm. Within this distance from the lamp, the measured lux values will be less than the computed values in this overview as the measurements are then within the near field of the lamp.

### Eulumdat light diagram

This light diagram below comes from the program Qlumedit, that extracts these diagrams from an Eulumdat file. It is explained on the OLiNo site.



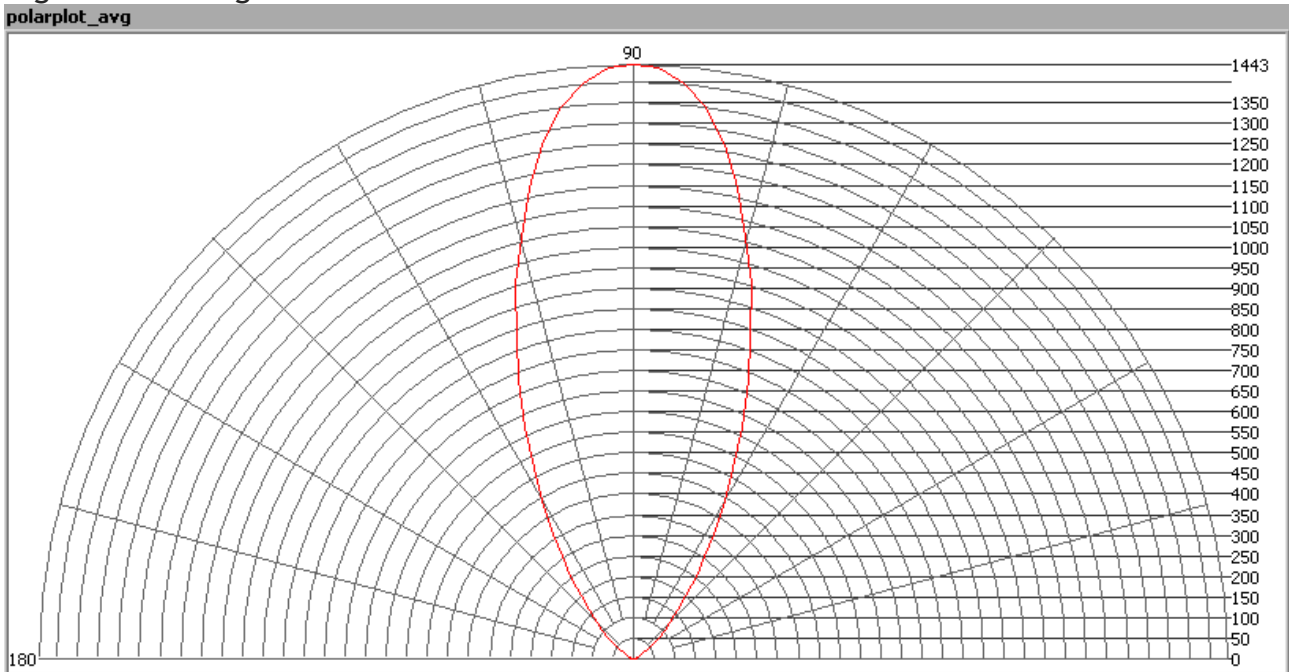
## Lamp measurement report – 17 Jan 2010

*The light diagram giving the radiation pattern.*

It indicates the luminous intensity around the light bulb. The directions C90-C270 and C0-C180 give the same result as there is a symmetry along the 1st axis.

### Illuminance $E_v$ at 1 m distance, or luminous intensity $I_v$

Herewith the plot of the *averaged* luminous intensity  $I_v$  as a function of the inclination angle with the light bulb.

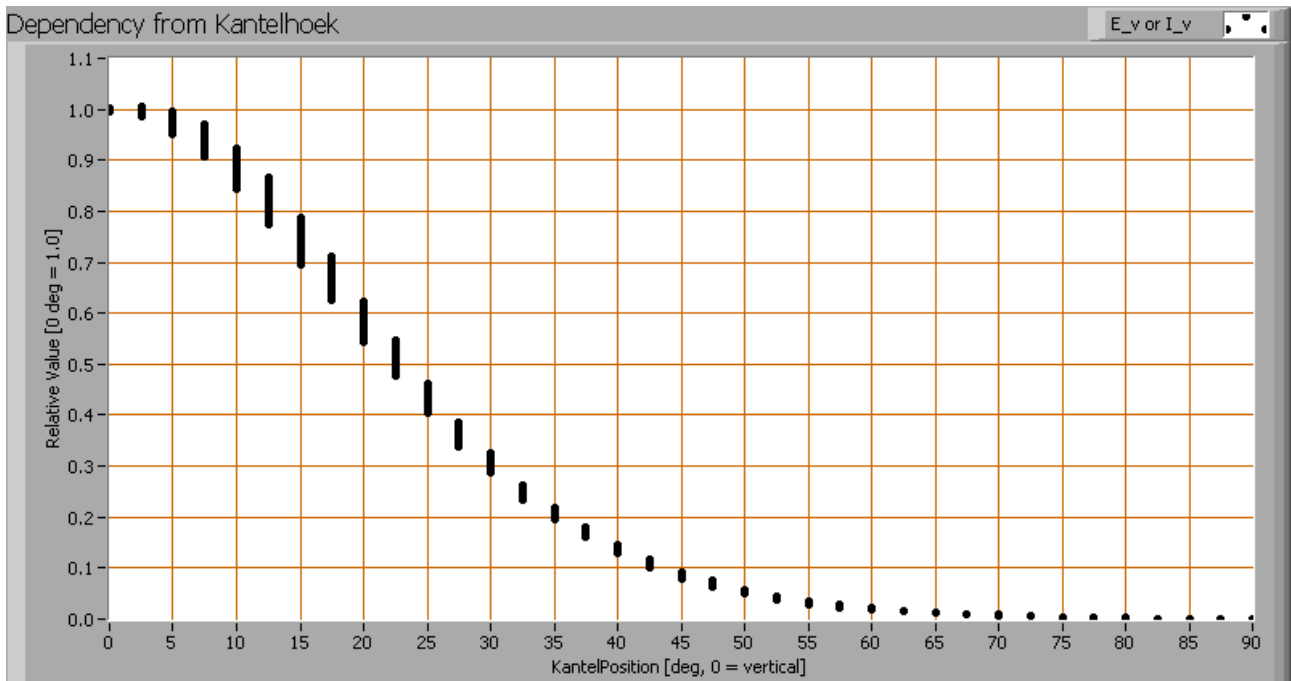


*The radiation pattern of the light bulb.*

This radiation pattern is the average of the light output of the light diagram given earlier. Also, in this graph the luminous intensity is given in Cd.

These averaged values are used (later) to compute the lumen output.

## Lamp measurement report – 17 Jan 2010



*Intensity data of every measured turn angle at each inclination angle.*

This plot shows per inclination angle the intensity measurement results for each turn angle at that inclination angle. There normally are differences in illuminance values for different turn angles. However for further calculations the averaged values will be used. When using the average values per inclination angle, the beam angle can be computed, being 45°.

### Luminous flux

With the averaged illuminance data at 1 m distance, taken from the graph showing the averaged radiation pattern, it is possible to compute the luminous flux.

The result of this computation for this light spot is a luminous flux of 1070 Lm.

### Luminous efficacy

The luminous flux being 1070 Lm, and the power of the light bulb being 20.2 W, yields a luminous efficacy of 53 Lm/W.

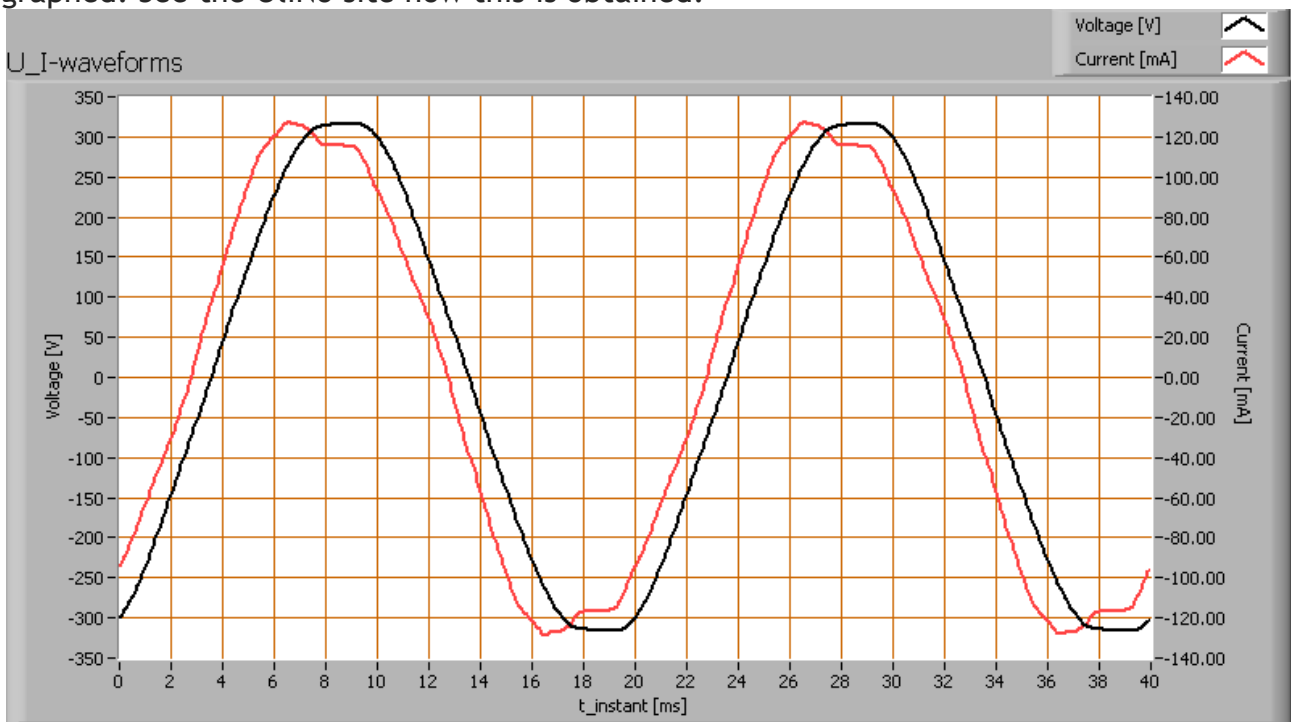
A power factor of 0.95 means that for every 1 kWh net power consumed, a reactive component of 0.3 kVAr was needed.



## Lamp measurement report – 17 Jan 2010

Lamp voltage	230 VAC
Lamp current	92 mA
Power P	20.2 W
Apparent power S	21.2 VA
Power factor	0.95

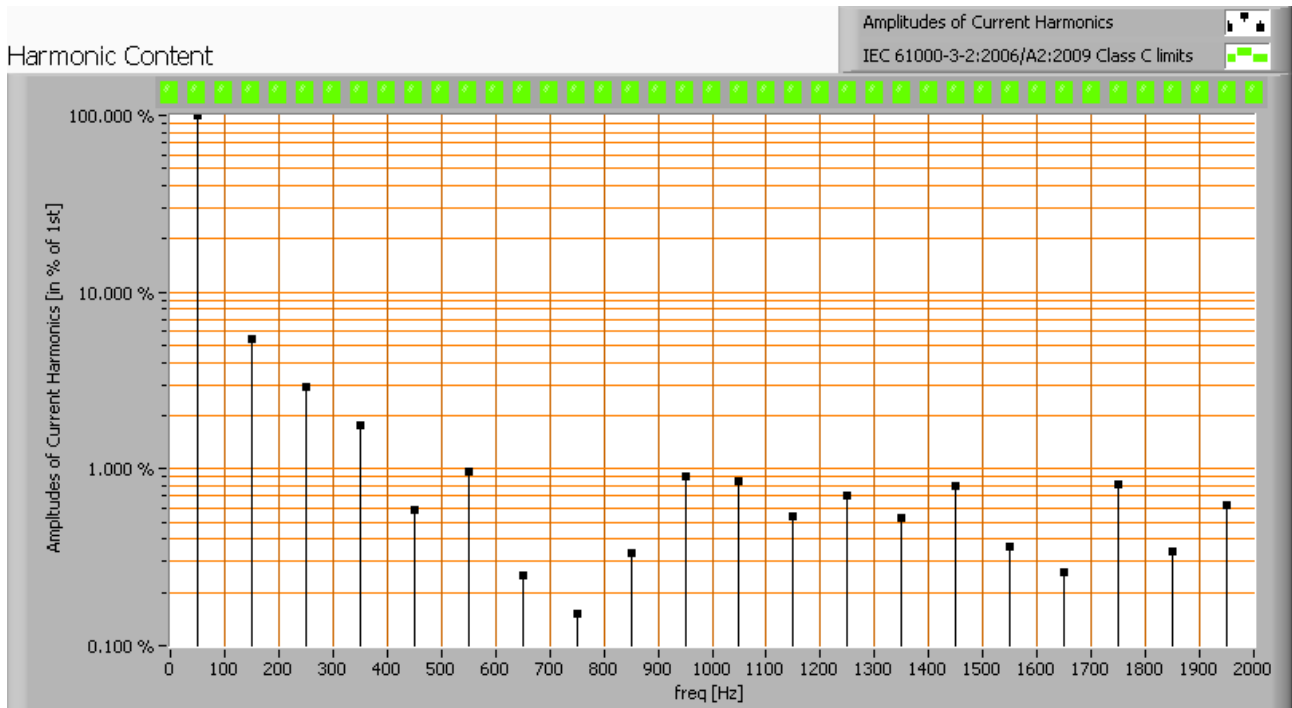
Of this light bulb the voltage across and the resulting current through it are measured and graphed. See the OliNo site how this is obtained.



*Voltage across and current through the lightbulb*

This waveforms have been checked on requirements posed by the norm IEC 61000-3-2:2006 (including up to A2:2009). See also the explanation on the OliNo website.

## Lamp measurement report – 17 Jan 2010



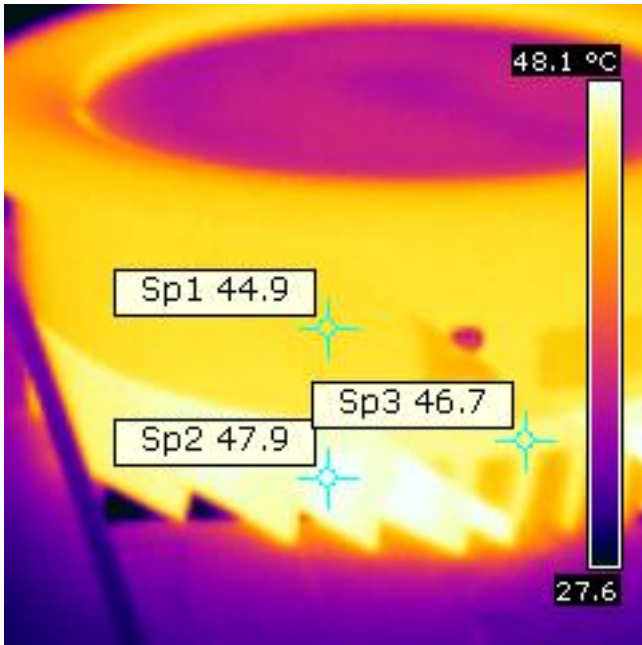
*Harmonics in in the current waveform and checked against IEC61000-3-2:2006*

There are no limits defined for harmonics for led lighting equipment with  $P \leq 25$  W.  
The Total Harmonic Distortion of the current is computed as 7 %.



## Lamp measurement report – 17 Jan 2010

### Temperature measurements lamp



Temperature image of the light bulb

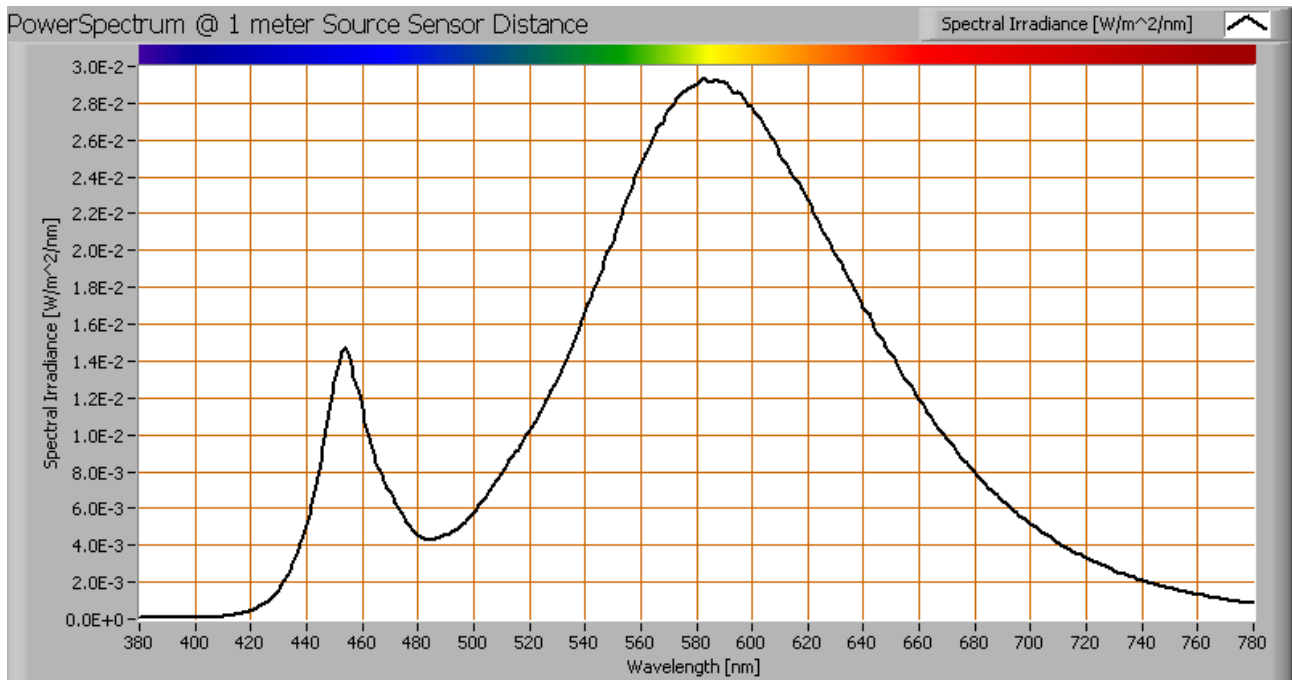
Tape is put on the housing and there the temperatures Sp1 and Sp3 are measured. Also the heatsink at the bottom is measured but then directly; the emissivity of that black matte material is close to 0.95 and does not need a masking tape.

status lamp	> 2 hours on
ambient temperature	24 deg C
reflected background temperature	24 deg C
camera	Flir B-CAM Western S
emissivity	0.95 <sup>(1)</sup>
measurement distance	0.30 m
IFOV <sub>geometric</sub>	1.1 mm
NETD (thermal sensitivity)	100 mK

<sup>(1)</sup> The emissivity of the masking tape is used which is about 0.95. The masking tape is so thin that it quickly takes the same temperature as the light bulb’s heat sink. The lamp on its hottest place (approximately 48 degrees) gets a bit warmer than warm-to-the-touch.

## Lamp measurement report – 17 Jan 2010

### Color temperature and Spectral power distribution

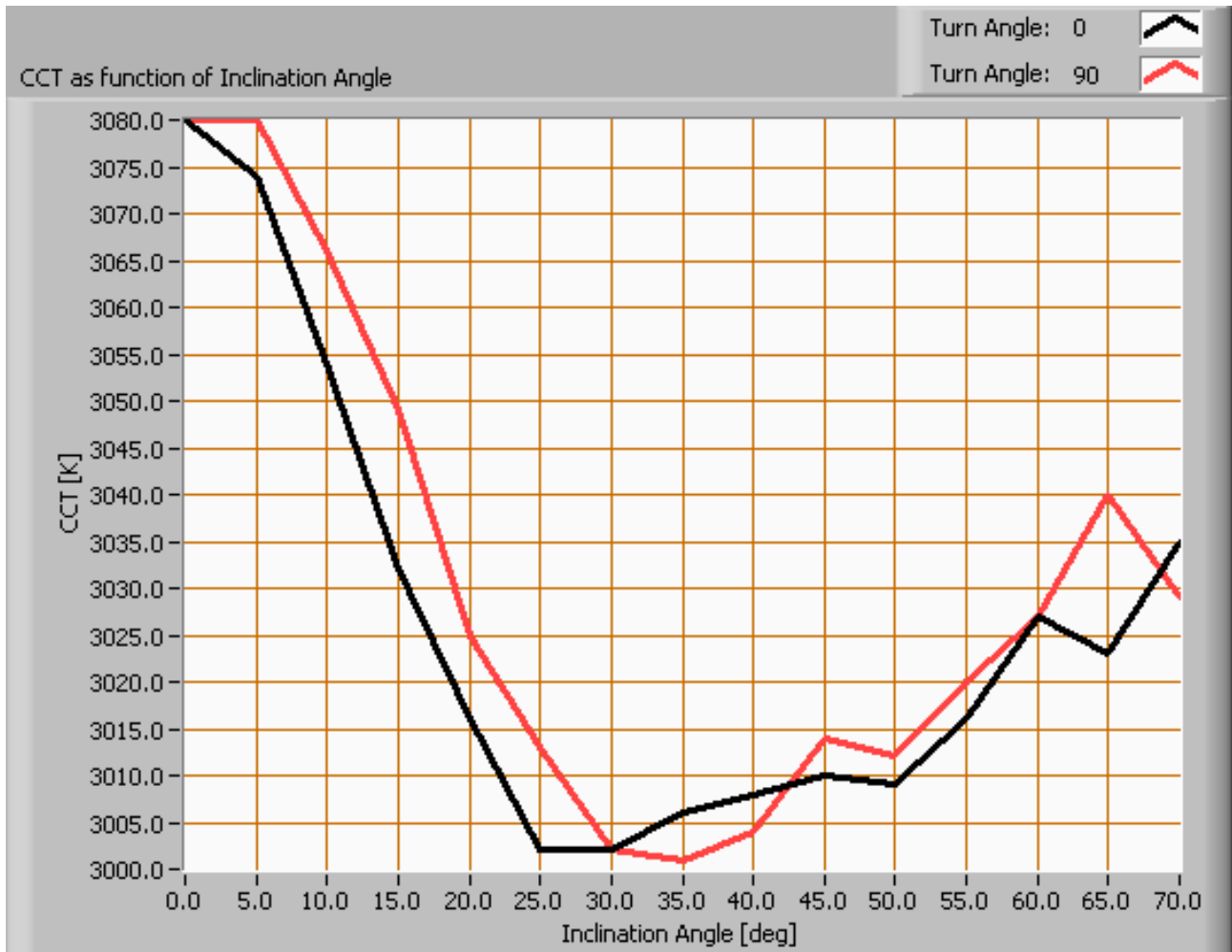


*The spectral power distribution of this light bulb, energies on y-axis valid at 1 m distance.*

The measured color temperature is about 3075 K which is warm white.

This color temperature is measured straight underneath the light bulb. Below a graph showing the color temperature for different inclination angles.

## Lamp measurement report – 17 Jan 2010



*Color temperature as a function of inclination angle.*

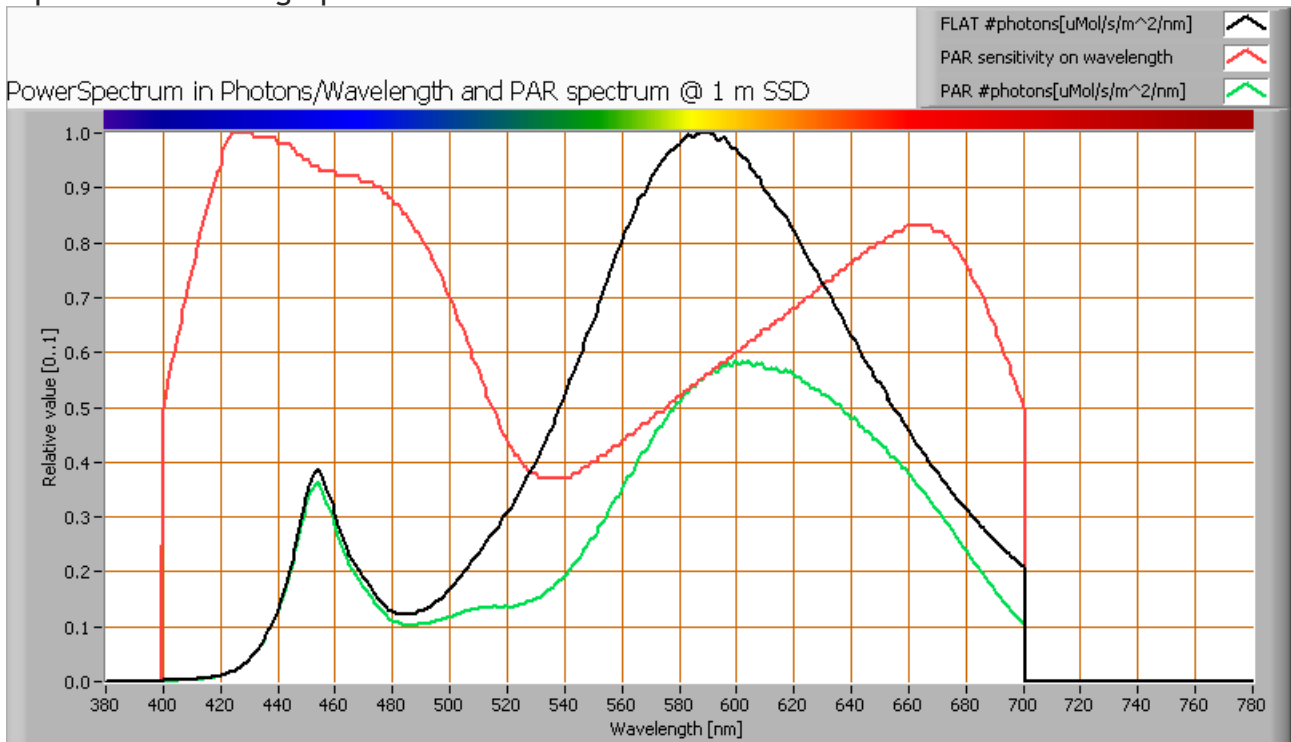
The measurement of CCT is measured for inclination angles up to 70° since then the illuminance value was decreased to very low values (< 5 lux).

The beam angle is maximally 45°, meaning a 22.5° inclination angle. In this area the majority of the light is present. The variation in correlated color temperature in this area is about 2 %.

## Lamp measurement report – 17 Jan 2010

### PAR value and PAR spectrum

To make a statement how well the light of this light bulb is for growing plants, the PAR-area needs to be determined. See the OliNo website how this all is determined and the explanation of the graph.



*The photon spectrum, then the sensitivity curve and as result the final PAR spectrum of the light of this light bulb*

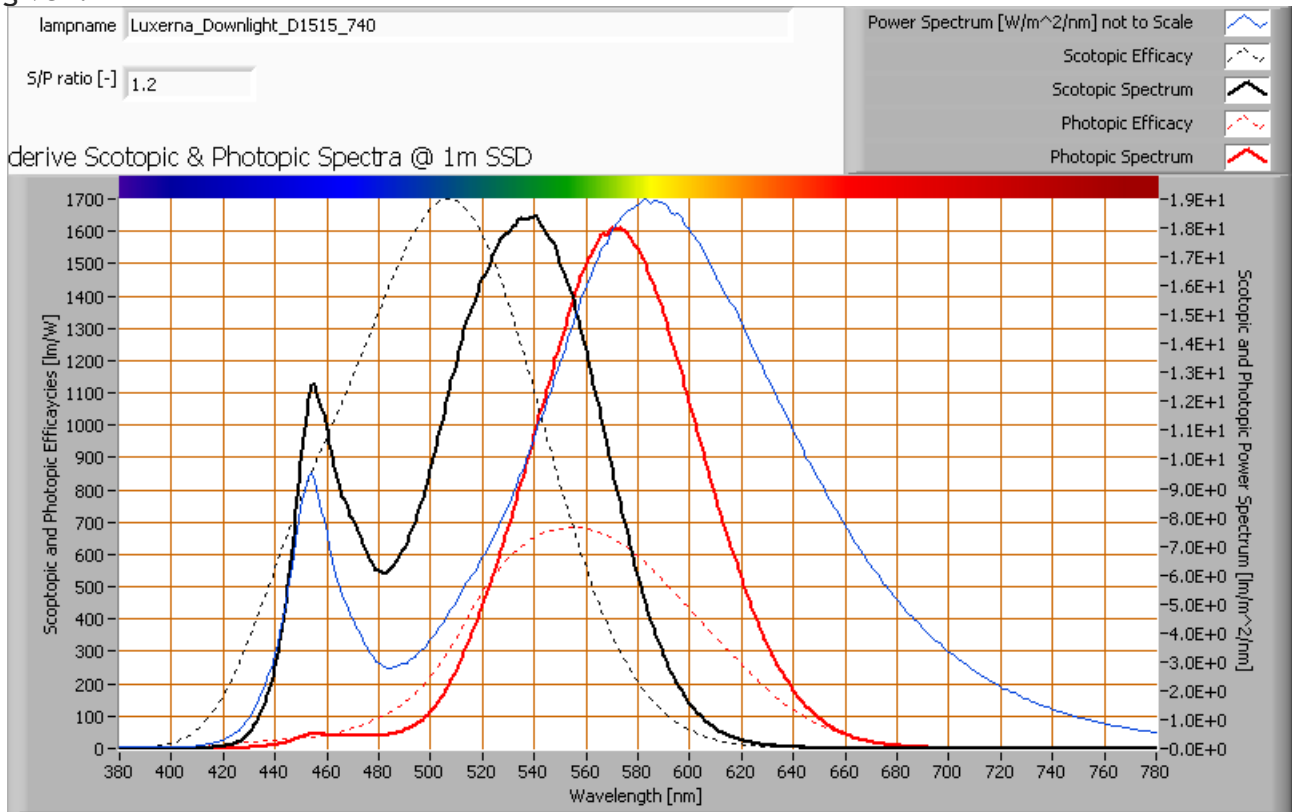
parameter	value	unit
PAR-number	12.0	μMol/s/m <sup>2</sup>
PAR-photon current	8.9	μMol/s
PAR-photon efficacy	0.4	μMol/s/W

The PAR efficiency is 62 % (valid for the PAR wave length range of 400 - 700 nm). So maximally 62 % of the total of photons in the light is effectively used by the average plant (since the plant might not take 100 % of the photons at the frequency where its relative sensitivity is 100 %).

## Lamp measurement report – 17 Jan 2010

### S/P ratio

The S/P ratio and measurement is explained on the OliNo website. Here the results are given.



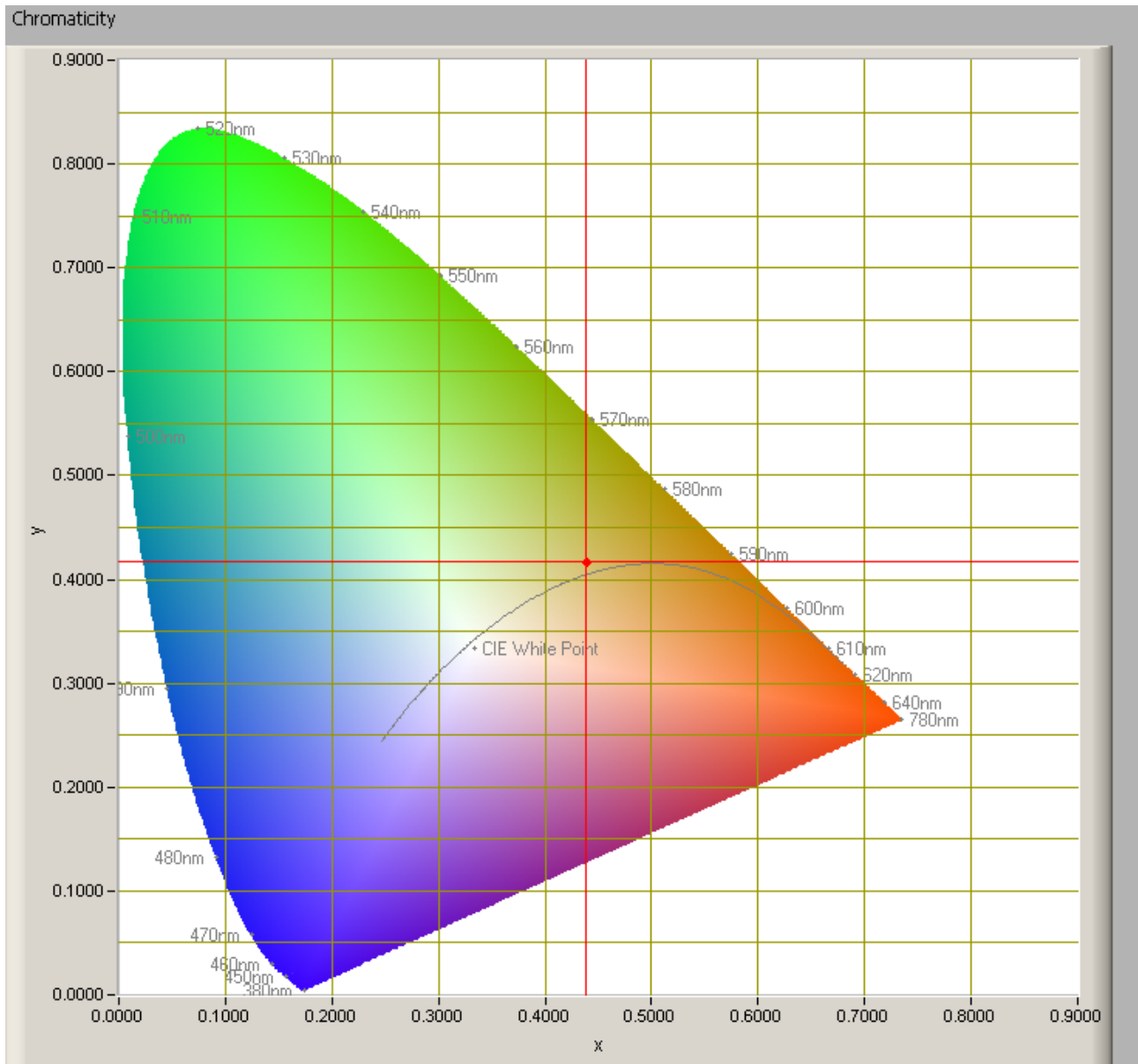
*The power spectrum, sensitivity curves and resulting scotopic and photopic spectra (spectra energy content defined at 1 m distance).*

The S/P ratio is 1.2.

More info on S/P ratio can be found on the OliNo website.

## Lamp measurement report – 17 Jan 2010

### Chromaticity diagram



*The chromaticity space and the position of the lamp's color coordinates in it.*

The light coming from this lamp is at a distance from the Planckian Locus (the black path in the graph).

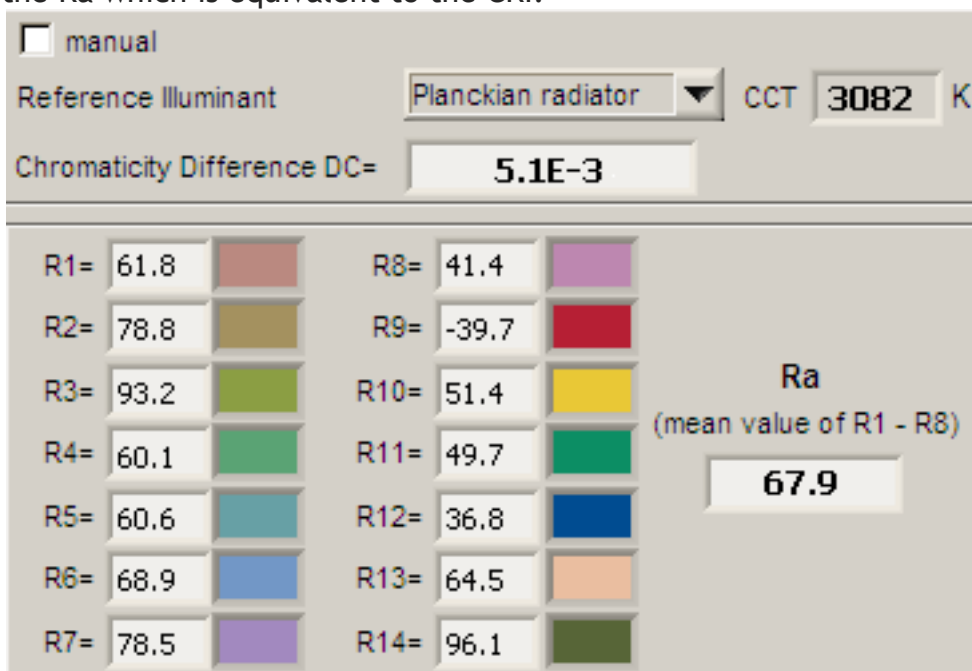
Its coordinates are  $x=0.4385$  and  $y=0.4175$ .



## Lamp measurement report – 17 Jan 2010

### Color Rendering Index (CRI) or also Ra

Herewith the image showing the CRI as well as how well different colors are represented (rendered). The higher the number, the better the resemblance with the color when a black body radiator would have been used (the sun, or an incandescent lamp). Practical information and also some critics about the CRI can be found on the OliNo website. Each color has an index  $R_x$ , and the first 8 indexes ( $R_1 \dots R_8$ ) are averaged to compute the  $R_a$  which is equivalent to the CRI.



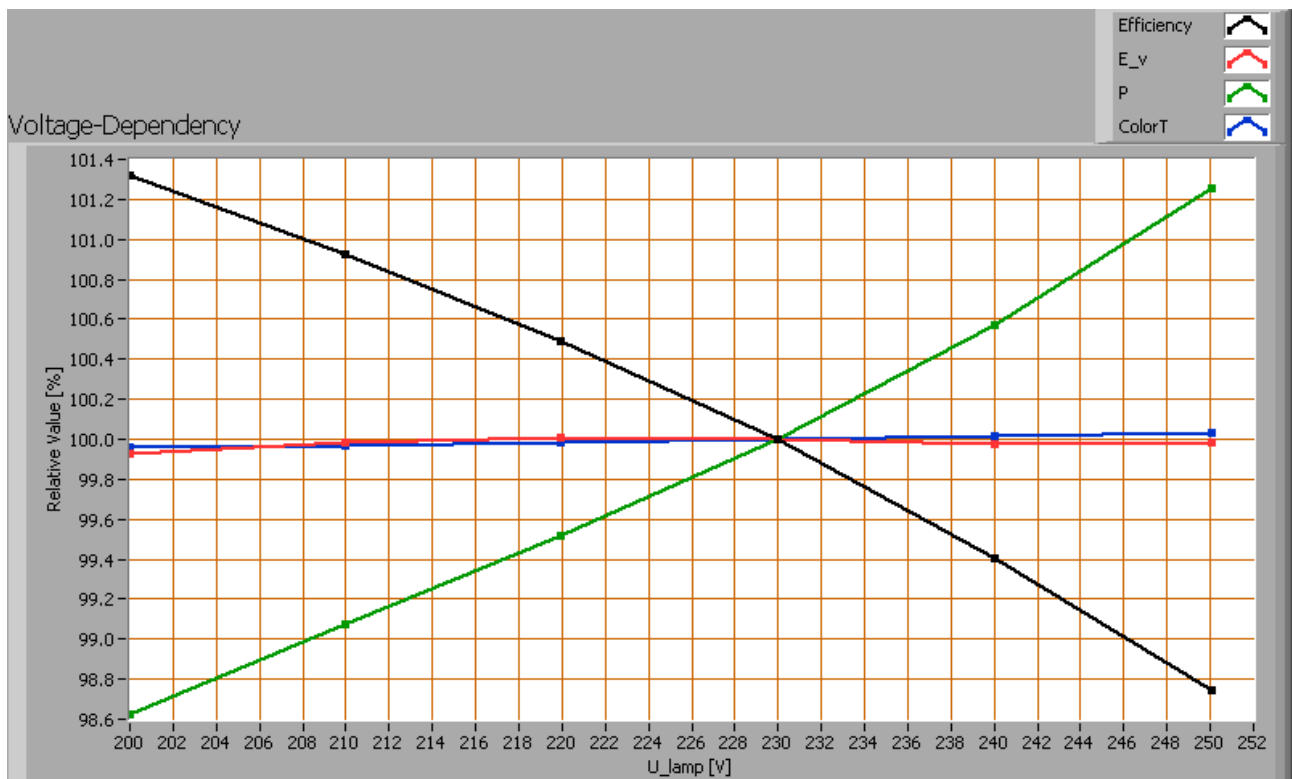
*CRI of the light of this lightbulb.*

The value of 68 is lower than 80 which is considered a minimum value for indoor usage. Note: the chromaticity difference is 0.0051 indicates the distance to the Planckian Locus. Its value is lower than 0.0054, which means that the calculated CRI result is meaningful.

### Voltage dependency

The dependency of a number of lamp parameters on the lamp voltage is determined. For this, the lamp voltage has been varied and its effect on the following light bulb parameters measured: illuminance  $E_v$  [lx], the lamp power  $P$  [W], the (Correlated) Color Temperature [K] and the luminous efficacy [Lm/W].

## Lamp measurement report – 17 Jan 2010



Lamp voltage dependencies of certain light bulb parameters, where the value at 230 V is taken as 100 %.

The illuminance and consumed power do not significantly vary when the voltage is varied.

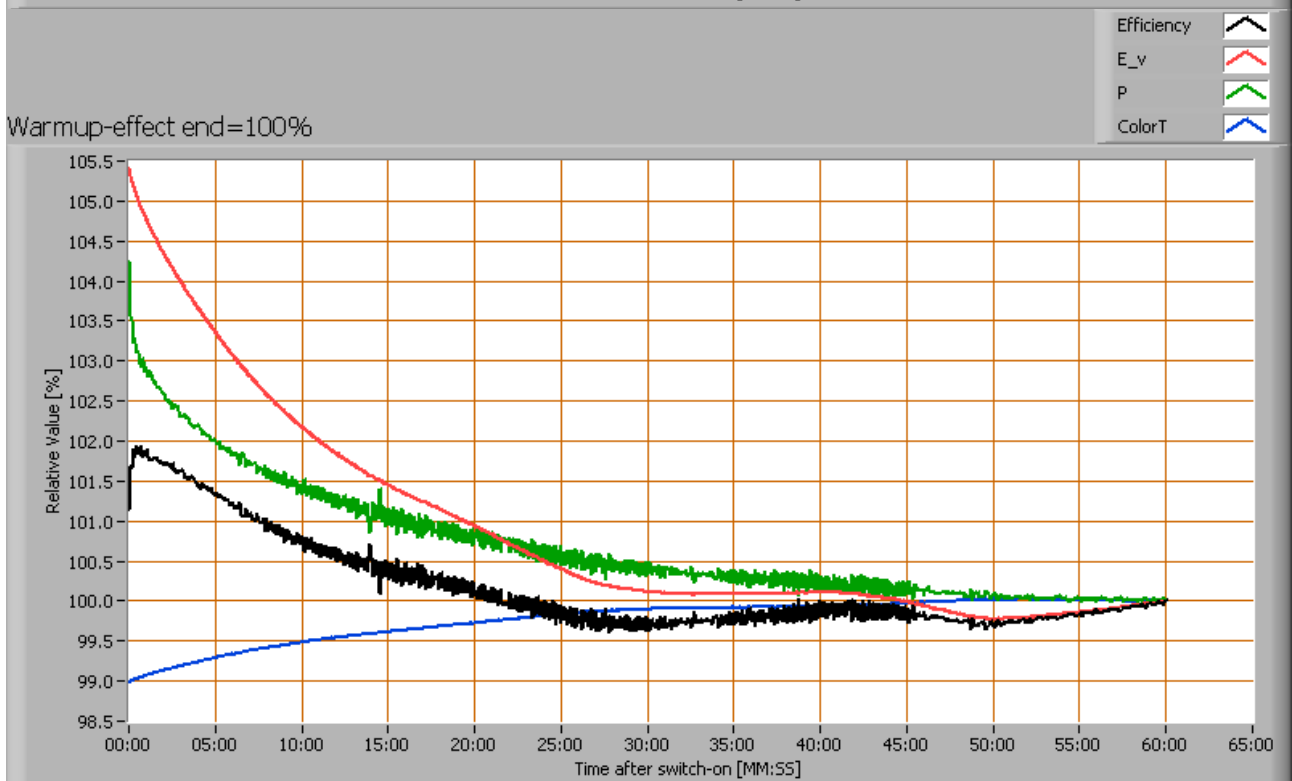
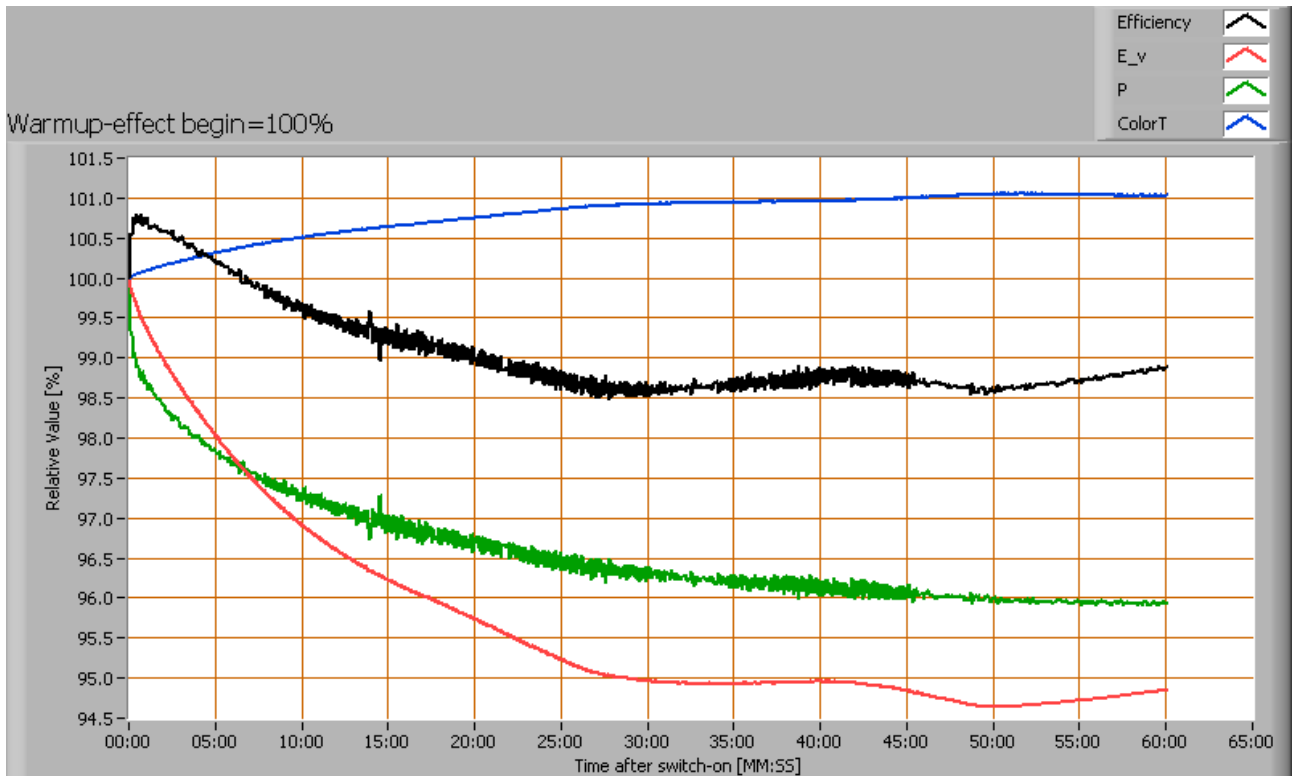
When the voltage at 230 V varies with + and - 5 V, then the illuminance varies < 0.1 %, so when abrupt voltage changes occur this effect is not visible in the illuminance output.

### Warm up effects

After switch on of a cold lamp, the effect of heating up of the lamp is measured on illuminance  $E_v$  [lx], color temperature CT or correlated color temperature CCT [K], the lamp power  $P$  [W] and the luminous efficacy [lm/W].



## Lamp measurement report – 17 Jan 2010



Effect of warming up on different light bulb parameters. At top the 100 % level is put at begin, and at bottom at the end.



## **Lamp measurement report – 17 Jan 2010**

The warm up time is about 30 minutes. During that time the illuminance decreases with  $\approx 5\%$  and the consumed power with  $\approx 4\%$ .

### **Disclaimer**

The information in this OLiNo report is created with the utmost care. Despite of this the information can have inaccuracies. OLiNo cannot be held liable for the content of the information in this report nor for the consequences of its use. The data in this report is not legally binding.