

Lamp measurement report - 10 Nov 2017

LED Lamp 230V bulb 6W Filament Warm White E27

Clear Dimmable

by

TopLEDshop



Lamp measurement report - 10 Nov 2017

Summary measurement data dated 2017-11-08

parameter	meas. result	remark
Color temperature	2575 K	deep warm white
Luminous intensity I _v	7.3 Cd	Measured straight underneath the lamp.
Illuminance modulation index	1 %	Measured with a light sensor looking at the lamp (angle not defined). Is a measure for the amount of flickering.
Beam angle	328 deg	328 deg is the beam angle for all C-planes since the lamp is symmetrical along its 1st axis.
Power P	5.7 W	The net power consumed.
Power Factor	0.84	An electrical load with this power factor means that for every 1 kWh net energy consumed, there has been 0.64 kVAhr for reactive energy.
THD	63 %	Total Harmonic Distortion.
Max inrush current	0.085 A	This current has been found at a voltage start angle of 80 degrees.
Luminous flux	517 lm	Measured with photogoniometer, calculation done as described in LM79-08.
Luminous efficacy	90 lm/W	
EU2013-label classification	A+	The energy class, from A++ (more efficient) to E (least efficient). This label is an update of the previous version, and compulsory from Sept 2013.
CRI_Ra	91	Color Rendering Index.
Rf_TM30	88	TM30-15 is an improved indicator (over CRI) of how well colors are rendered.
Rg_TM30	97	Gamut Area Ratio.
Coordinates chromaticity diagram	x=0.4087 en y=0.4680	
Fitting	E27	This lamp is connected directly to the grid voltage.
PAR-value	0.1 uMol/s/m ²	The number of photons seen by an average plant when it is lit by the light of this light bulb. Value valid at 1 m distance from light bulb.
PAR-photon efficacy	1.0 uMol/s/W _e	The total emitted number of photons by this light, divided by its consumption in W. It indicates a kind of efficacy in generating photons.
Photon current	10.3 uMol/s	The total number of photons in the light of this lamp.

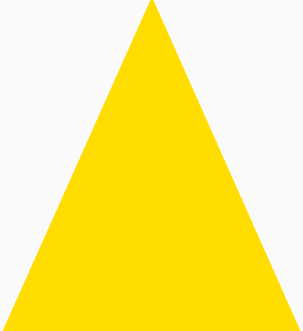
Lamp measurement report - 10 Nov 2017

parameter	meas. result	remark
S/P ratio	1.3	This factor indicates the amount of times more efficient the light of this light bulb is perceived under scotopic circumstances (low environmental light level).
D x H external dimensions	60 mm x 104 mm	External dimensions of the lamp.
L x W x H luminous area	8 mm x 6 mm x 30 mm	Dimensions of the luminous area (used in Eulumdat file). It is the surface of the LED wires.
General remarks		<p>The ambient temperature during the whole set of illuminance measurements was 22.6 - 24.5 deg C. The temperature of the lamp gets maximally about 17.5 degrees hotter than ambient temperature.</p> <p>Warm up effect: During the warmup time the illuminance doesn't vary significantly (< 5 %).</p> <p>During the warmup time the power varies during 3 minutes and increases with 7 %. The variation in efficacy (calculated as indication by simply dividing the illuminance by the power) during the warming up is -4 %. A very high negative value indicates a significant decrease for instance due to heating up of the lamp (decrease of lifetime).</p> <p>Voltage dependency: There is a constant dependency of the illuminance when the power voltage varies between 200 - 250 V AC. There is a constant dependency of the consumed power when the power voltage varies between 200 - 250 V AC.</p> <p>Also the dim-ability of this lamp has been tested, and the result is that the lamp is dim-able, see also the separate chapter in this test report.</p>
Eff-variation	-4 %	This is the variation in efficacy (calculated as indication by simply dividing the illuminance by the power) during the warming up. A very high negative value indicates a significant decrease for instance due to heating up of the lamp (decrease of lifetime).
Dimmable	yes	Info from manufacturer.
Melanopic effect factor	0.390	According to norm DIN SPEC 5031-100:2015-08.
Blue Light Hazard risk group	0	0=exempt, 1=low, 2 = moderate, 3=high risk. Indication value only for straight underneath the lamp.
form factor	bulb	

Lamp measurement report - 10 Nov 2017

parameter	meas. result	remark
article number	TLS 27-6-27-104-bhd	

Overview table

m.	Ø 50%		C0-180: 328° C90-270: 328°	E (lux)	Luminaire Efficacy
	C0-180	C90-270			90 (lumen per Watt)
0.5				29	Half-peak diam C0-180
0.75				13	x diameter(m)
1				7	Half-peak diam C90-270
1.25				5	x diameter(m)
1.5				3	Illuminance
1.75				2	7 / distance² (lux)
2				2	Total Output
					2

Please note that this overview table makes use of calculations, use this data with care as explained on the OliNo site.

Lamp measurement report - 10 Nov 2017

EU 2013 Energy label classification

Since Sept 2013 these labels will be needed.

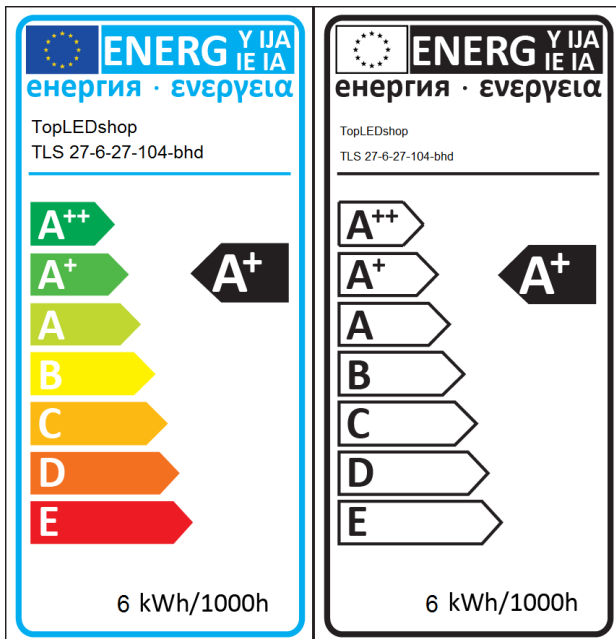
Important for the energy classification are the corrected rated power and the useful luminous flux.

The measured rated power is 5.7 W and might need to be corrected. The correction is dependent from the lamp type and whether or not the lamp control gear is included or not.

The choice for this lamp is the following classification: **Lamps with own control gear (external or internal)**. As a result the corrected rated power becomes: 5.7 W.

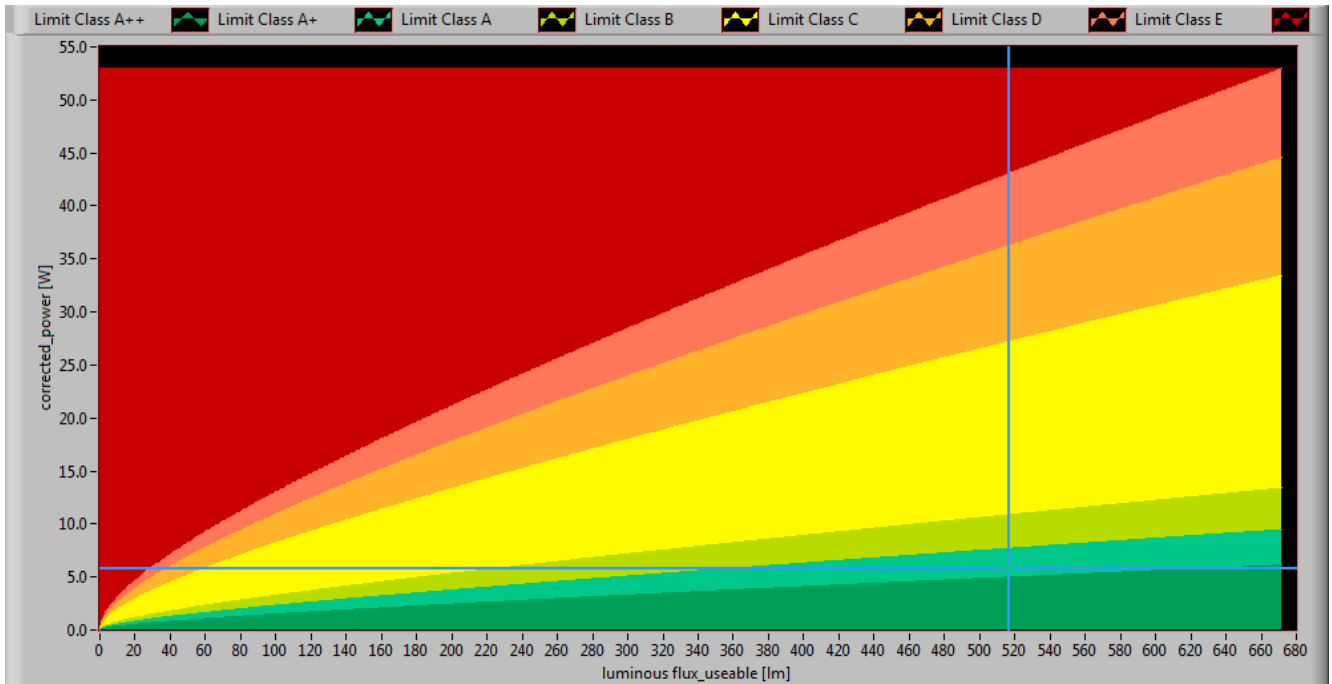
The luminous flux measured is 517 lm. The classification of this lamp needed to determine the useful flux is: **Non-directional lamps**. Then the useful flux becomes 517 lm. Now a reference power can be calculated.

The energy efficiency coefficient is $P_{corr} / P_{ref} = 0.13$.



EU energy label for this lamp

Lamp measurement report - 10 Nov 2017

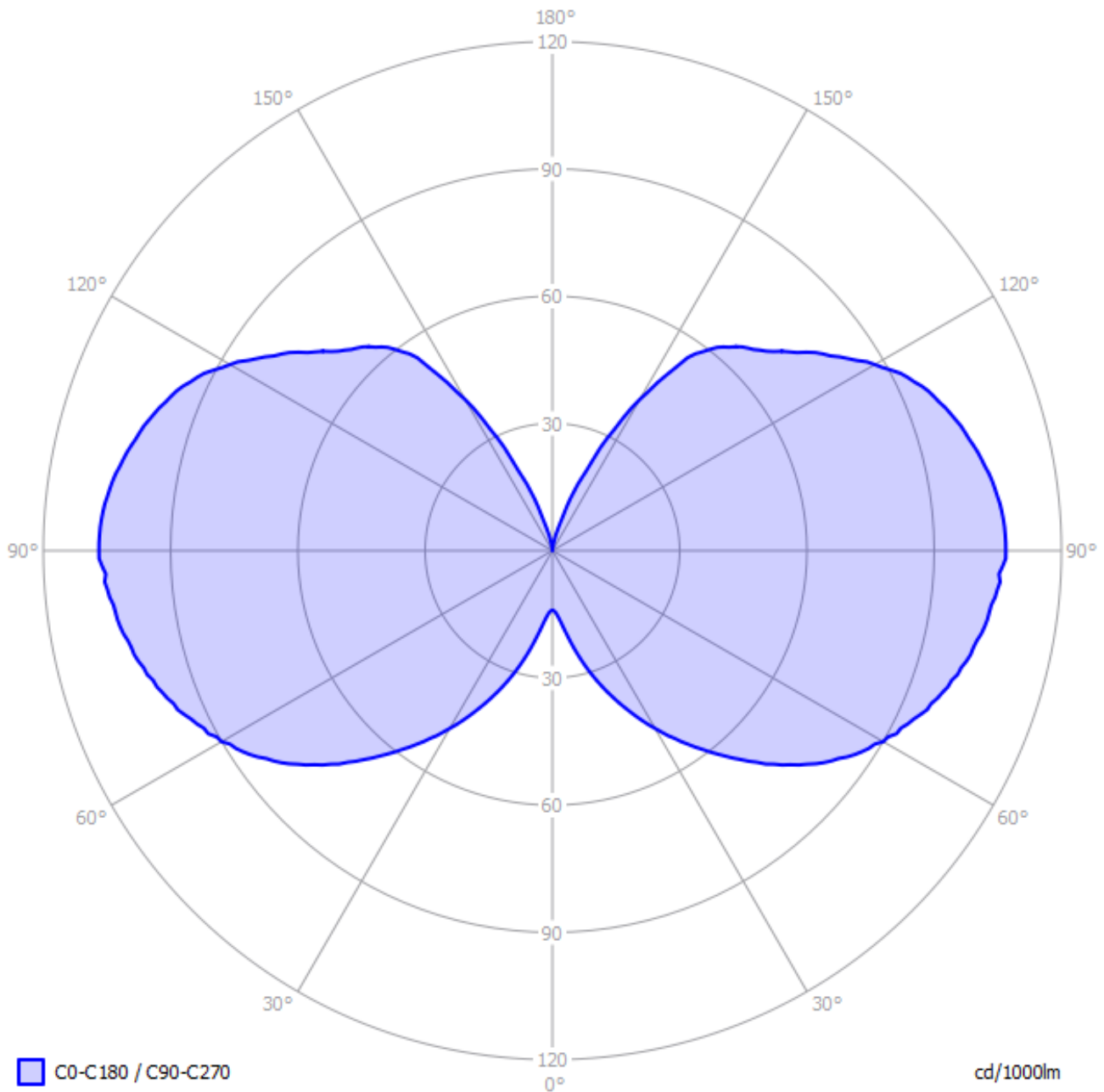


The lamp's performance in the lumen-Watt field, with the energy efficacy fields indicated.

Lamp measurement report - 10 Nov 2017

Eulumdat light diagram

This light diagram below comes from the program Qlumedit, that extracts these diagrams from an Eulumdat file.



The light diagram giving the radiation pattern.

The light diagram indicates the beam in the C0-C180 plane and in the plane perpendicular to that, the C90-C270 plane. These beams are equal as the lamp has symmetry over its first axis (the vertical axis).

When using the E_v or I_v values per inclination angle, the beam angle can be computed, being 328 deg for the C0-C180 plane and 328 deg for the C90-C270 plane.

Lamp measurement report - 10 Nov 2017

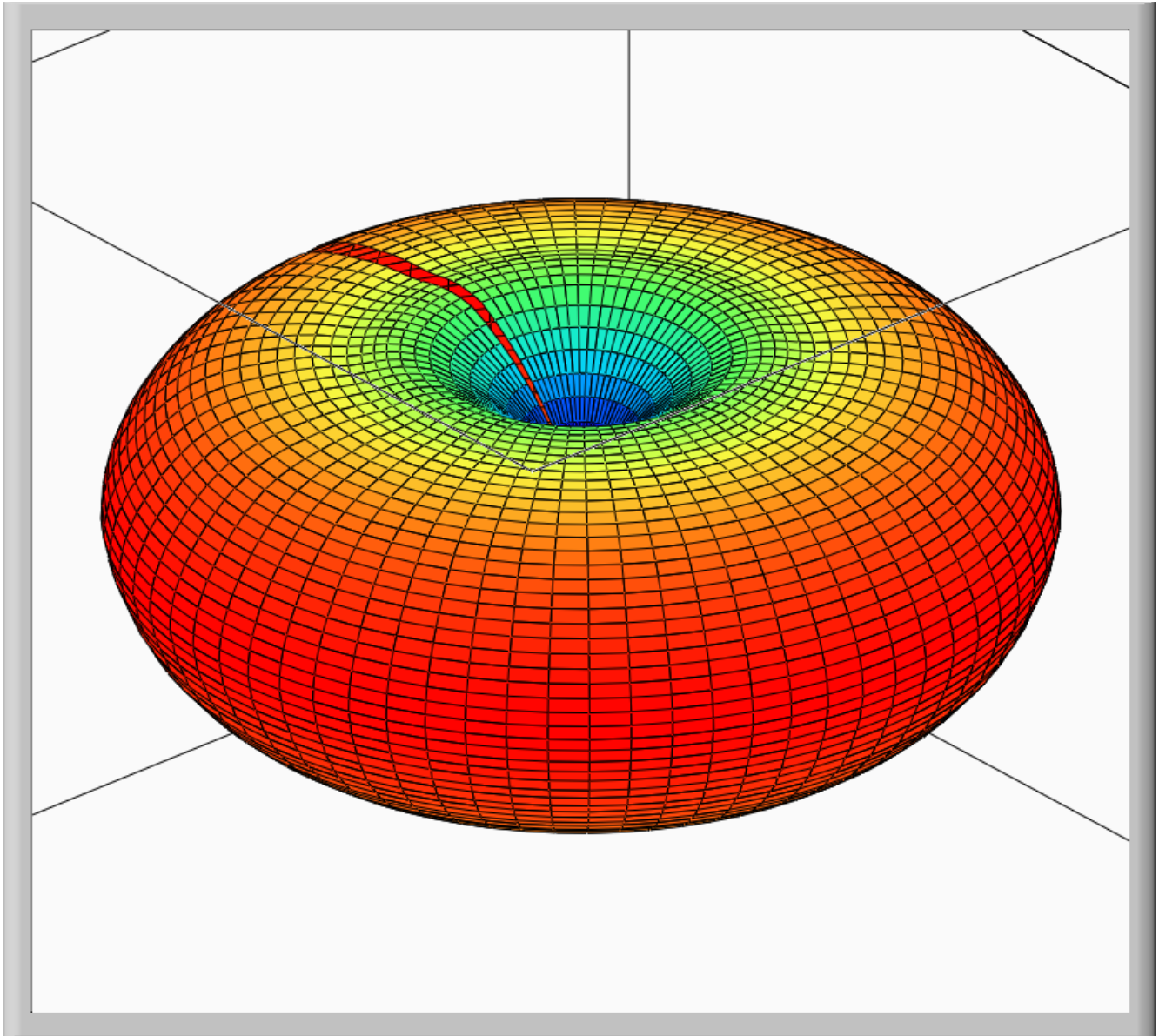
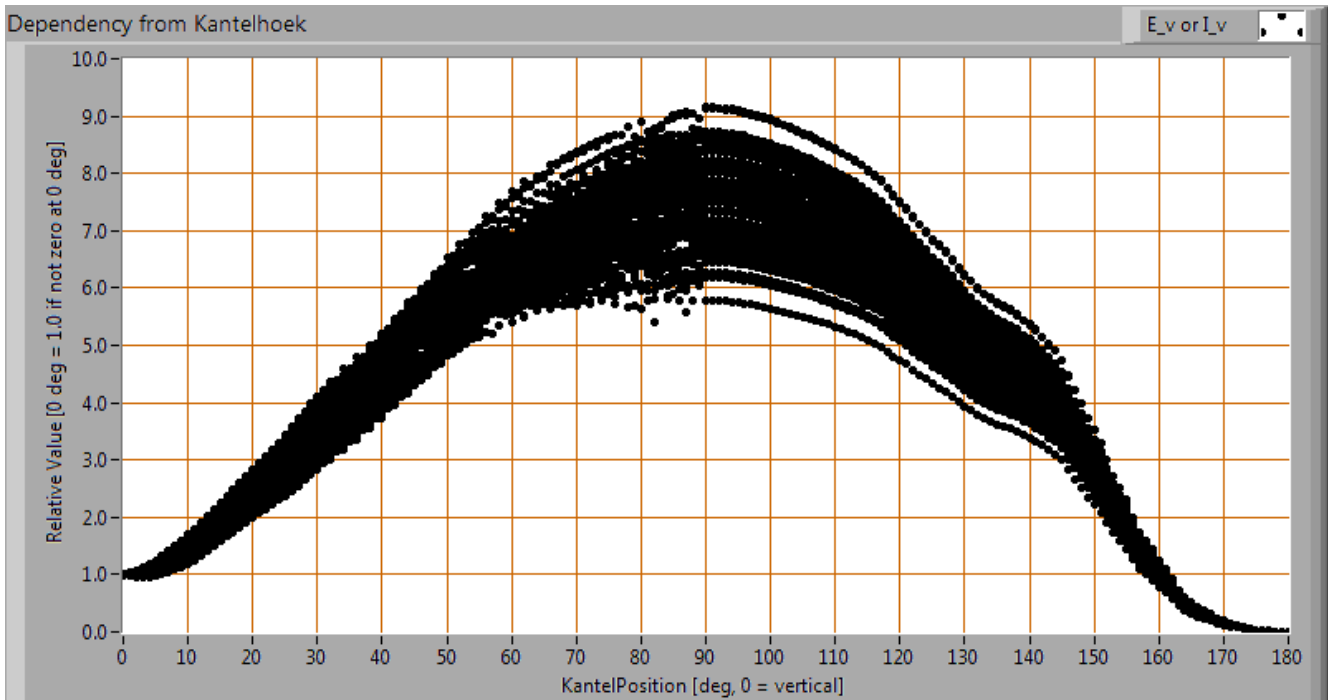


Image of the light distribution pattern in 3D.

Lamp measurement report - 10 Nov 2017



Intensity data of every measured turn angle at each inclination angle.

This plot shows per inclination angle the intensity measurement results for each turn angle at that inclination angle. There normally are differences in illuminance values for different turn angles. However for further calculations the averaged values will be used.

Luminous flux

With the averaged illuminance data at 1 m distance, taken from the graph showing the averaged radiation pattern, it is possible to compute the luminous flux.

The result of this computation for this light spot is a luminous flux of 517 lm.

Luminous efficacy

The luminous flux being 517 lm, and the consumed power of the lamp being 5.7 Watt, results in a luminous efficacy of 90 lm/Watt.

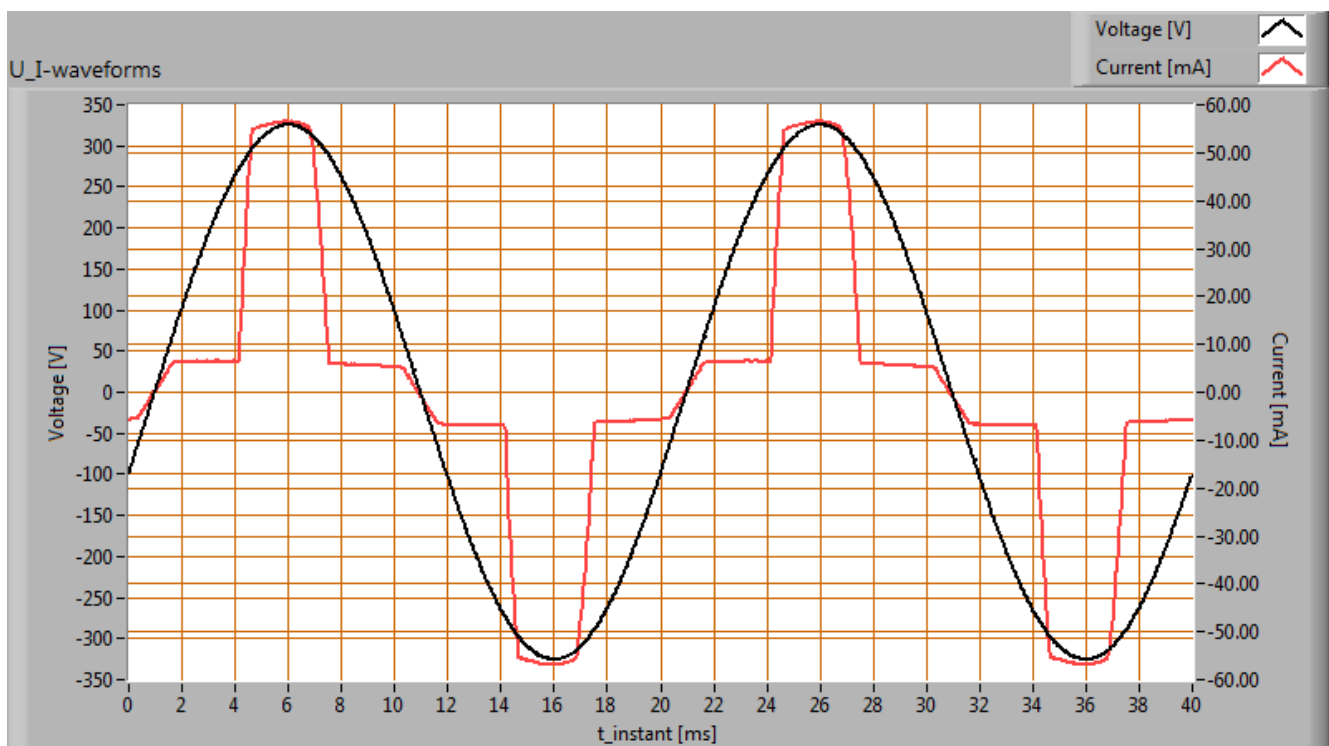
Lamp measurement report - 10 Nov 2017

Electrical properties

The power factor is 0.84. An electrical load with this power factor means that for every 1 kWh net energy consumed, there has been 0.64 kVAhr for reactive energy.

Lamp voltage	230.17 V
Lamp current	0.029 A
Power P	5.7 W
Apparent power S	6.8 VA
Power factor	0.84

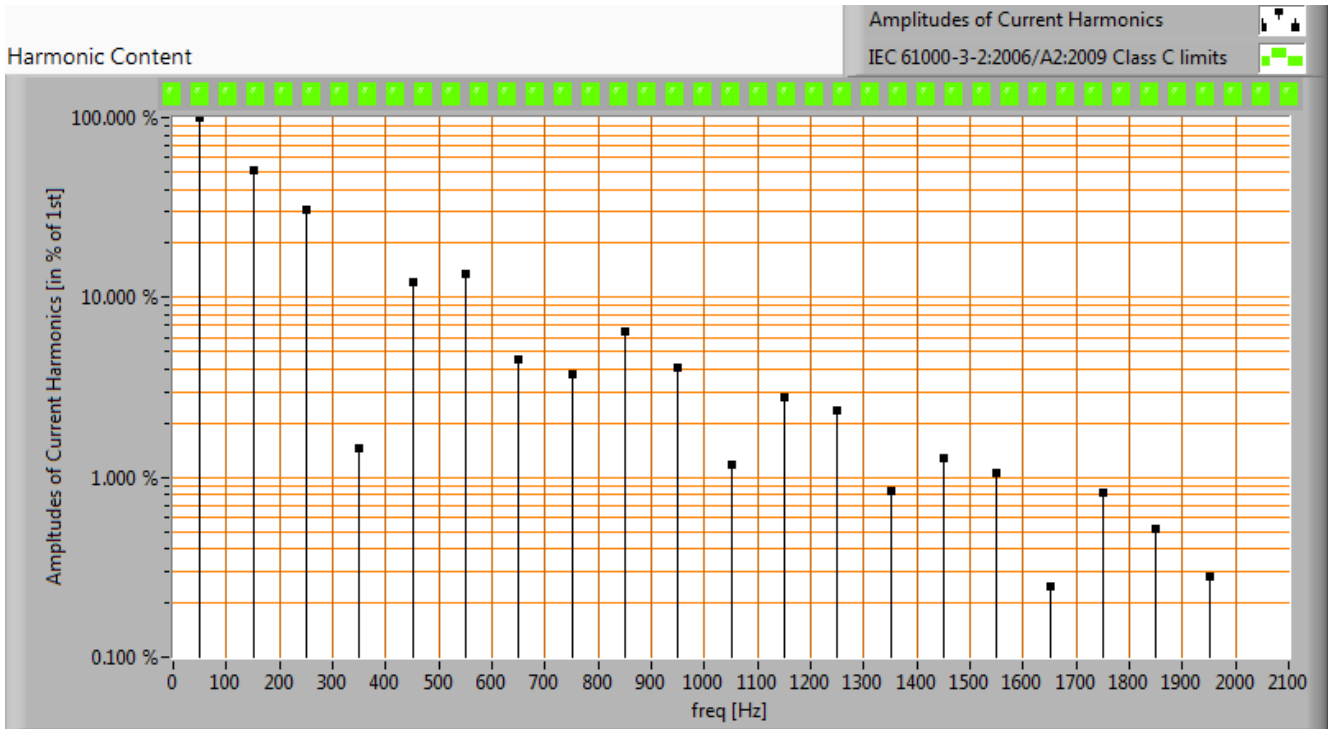
Of this lamp the voltage across and the resulting current through it are measured and graphed.



Voltage across and current through the lightbulb

This current waveform has been checked on requirements posed by the norm IEC 61000-3-2:2006 (including up to A2:2009).

Lamp measurement report - 10 Nov 2017



Harmonics in the current waveform and checked against IEC61000-3-2:2006 and A2:2009

When the consumed power is ≤ 25 W there are no limits for the harmonics.

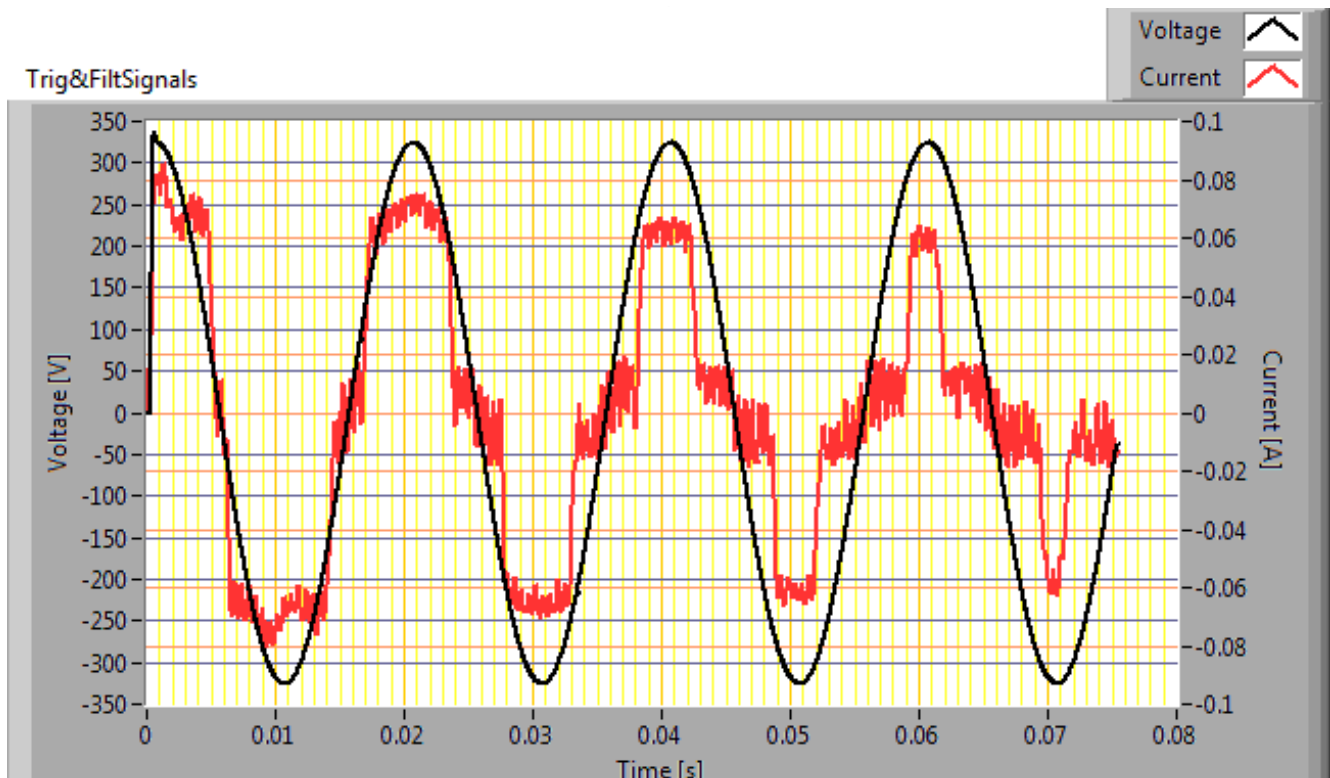
The Total Harmonic Distortion of the current is computed and its value is 63 %.

Lamp measurement report - 10 Nov 2017

Inrush current

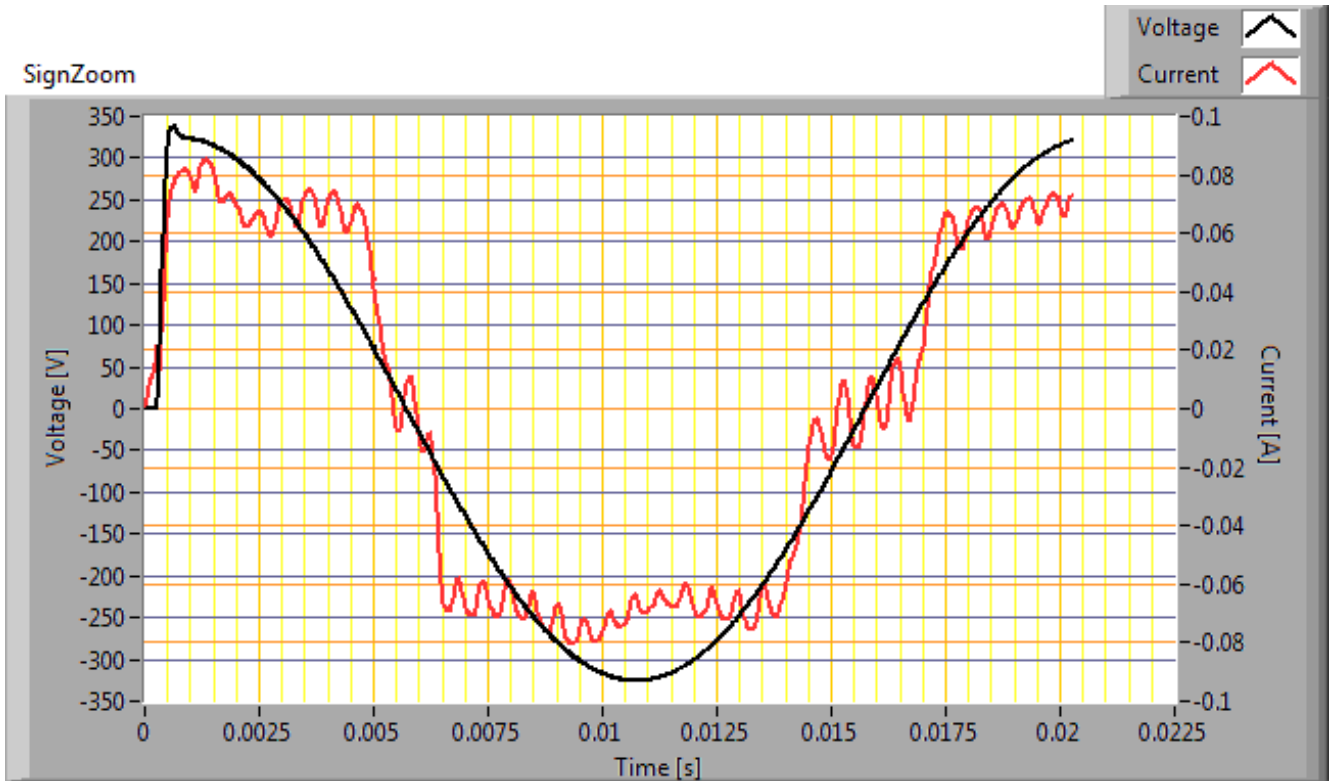
The inrush current has been measured for different voltage start angles; from 0 - 170 degrees with a 10 degrees step. The current- and voltage values have been acquired at a sample speed of 39.9 kS/s. Then this data has been fed into a second order 2kHz low pass Butterworth filter. This removes the current spikes that do not represent relevant values. The lamp was two minutes off before every inrush current measurement was made.

Test voltage	230.0 V	
Frequency of the voltage	50.0 Hz	
Maximum inrush current	0.085 A	This current has been found at a voltage start angle of 80 degrees.
Pulse width of max inrush current	5.3E-3 s	This is the time that the pulse is higher than 10 % of the max inrush current.
Minimal inrush current	0.078 A	This current has been found at a voltage start angle of 170 degrees.
$I^2 \times t$ after 10 ms at 0 deg voltage start angle	3.900E-5 A	This is the $I^2 t$ value when a zero crossing detector is used to start the voltage from 0 degrees.

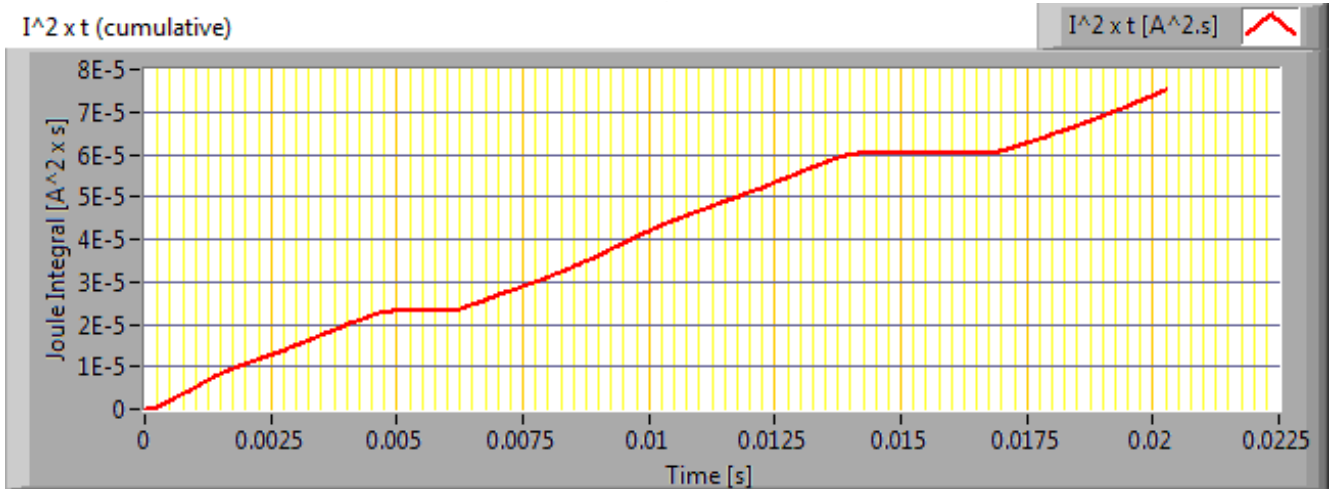


Inrush current found at worst-case voltage start angle

Lamp measurement report - 10 Nov 2017



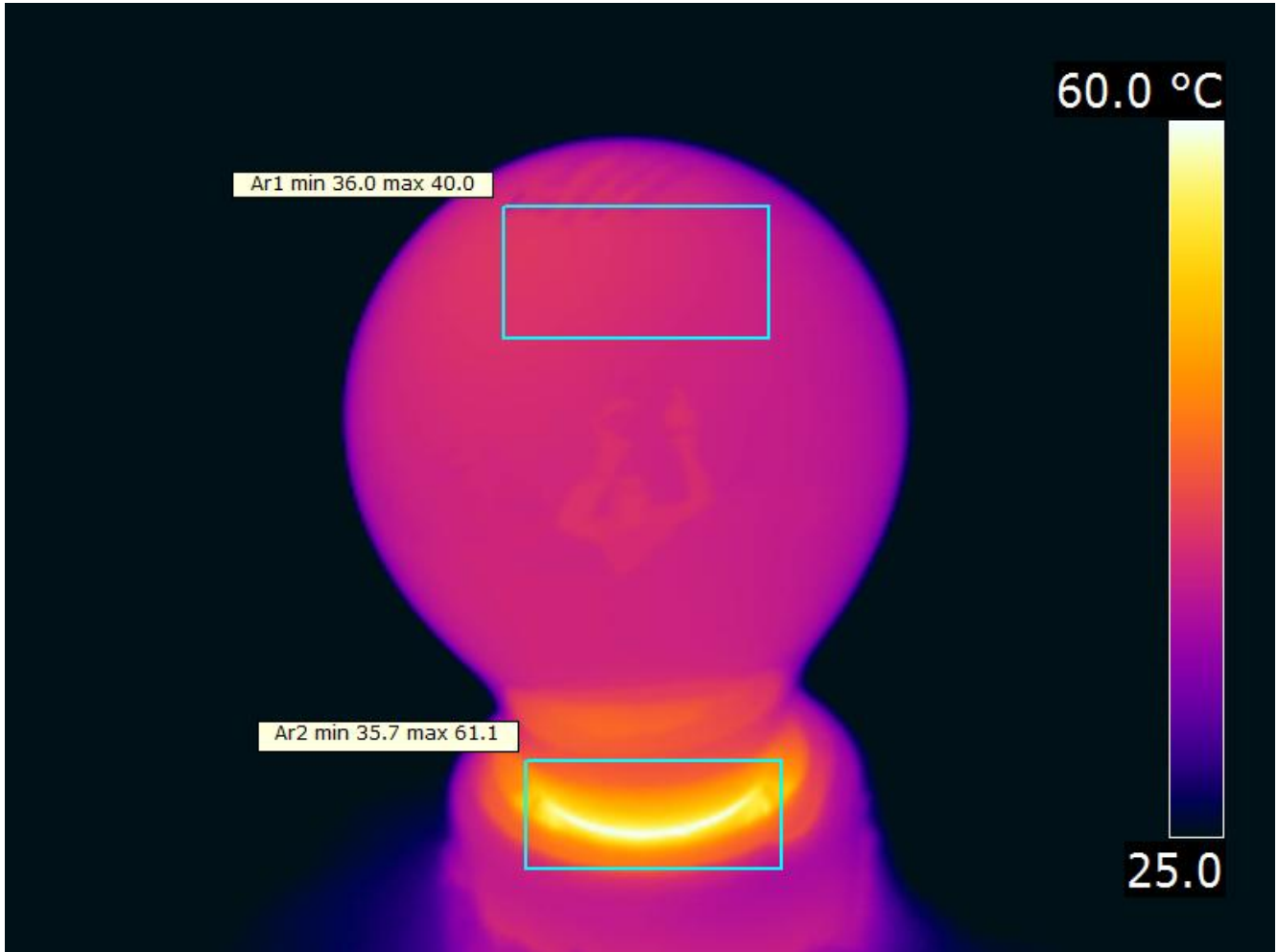
First cycle of the maximum inrush current



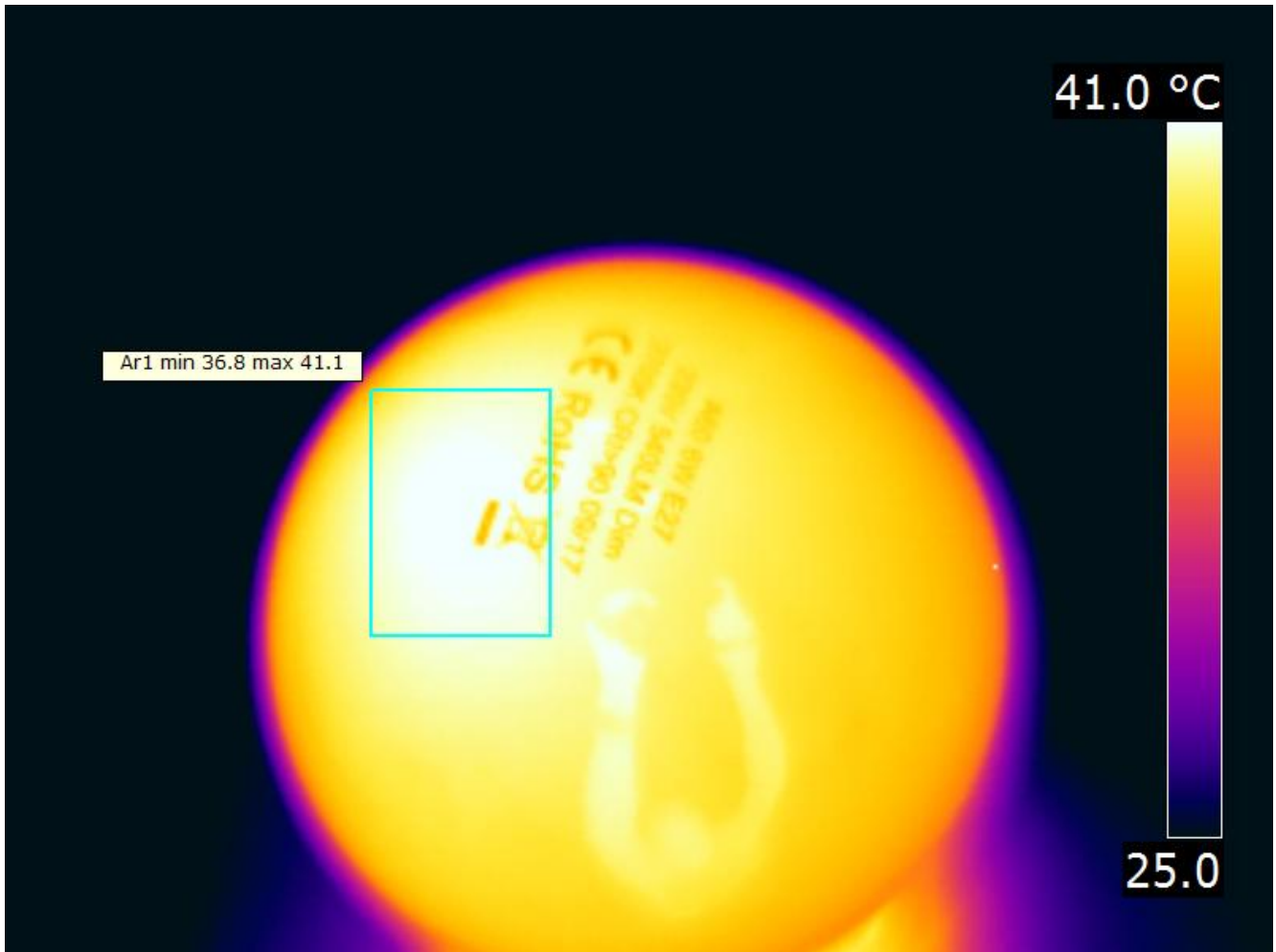
The energy I^2t during the first 10 ms of the first current cycle

Lamp measurement report - 10 Nov 2017

Temperature measurements lamp



Lamp measurement report - 10 Nov 2017

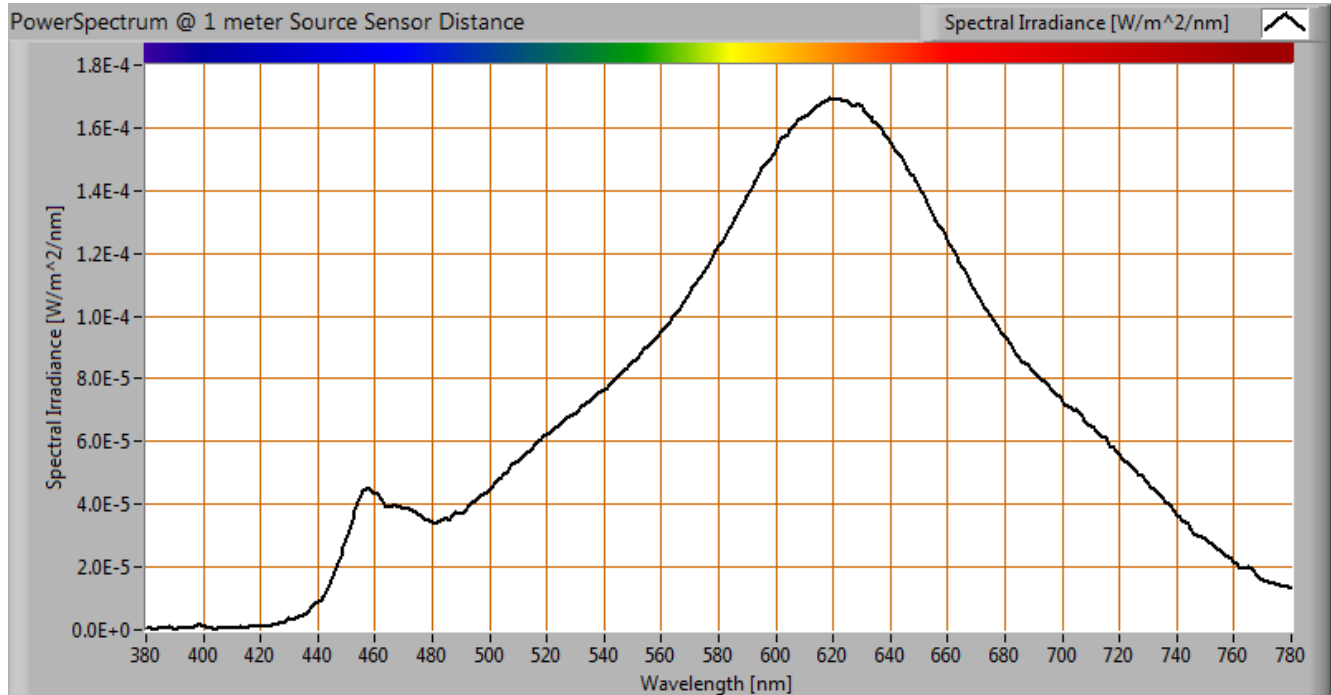


Temperature image(s).

status lamp	> 2 hours on
ambient temperature	23.5 deg C
reflected background temperature	23.5 deg C
camera	Flir T335
emissivity	0.90
measurement distance	0.5 m
IFOV_geometric	0.136 mm per 0.1 m distance
NETD (thermal sensitivity)	50 mK

Lamp measurement report - 10 Nov 2017

Color temperature and Spectral power distribution

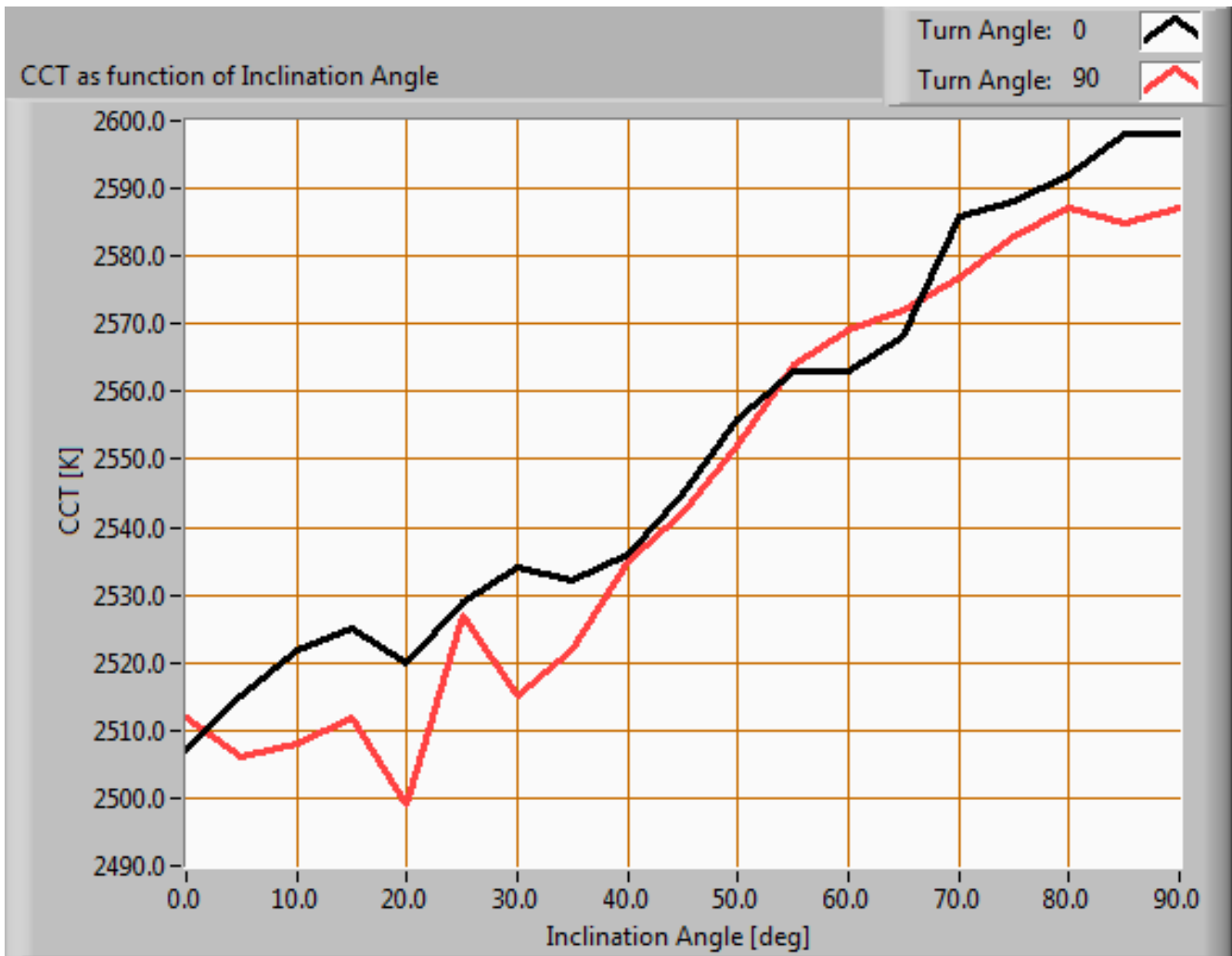


The spectral power distribution of this light bulb, energies on y-axis valid at 1 m distance.

The measured color temperature is 2575 K which is deep warm white.

This color temperature is measured straight underneath the light bulb. Below a graph showing the color temperature for different inclination angles.

Lamp measurement report - 10 Nov 2017



Color temperature as a function of inclination angle.

The color temperature is given for inclination angles up to 90 deg. Beyond that angle has not been measured.

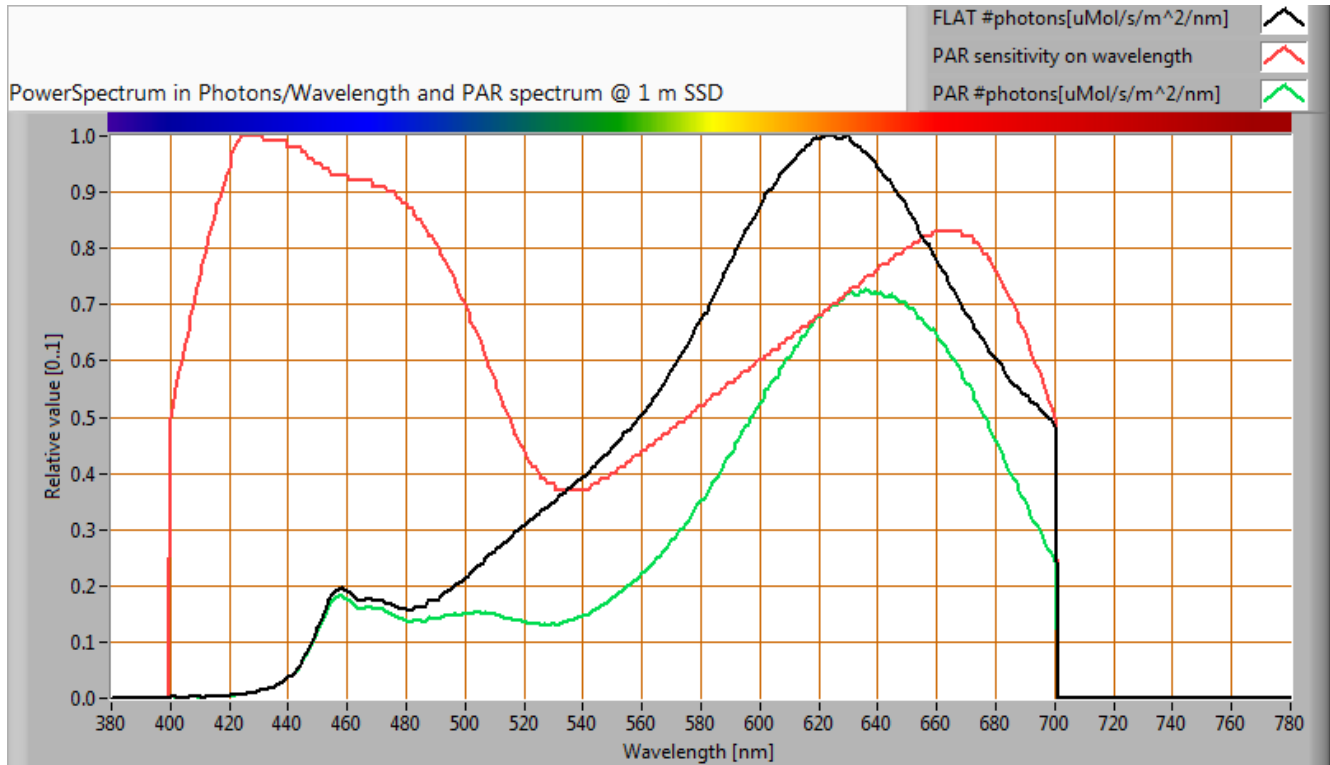
For the C0-C180 plane: the beam angle of 328 deg is equivalent to 164.0 deg inclination angle, which is the area where most of the light falls within. The maximum variation of color temperature in the first 90 degrees of this inclination area is about 3 %.

For the C90-C270 plane: the beam angle of 328 deg is equivalent to 164.0 deg inclination angle, which is the area where most of the light falls within. The maximum variation of color temperature in the first 90 degrees of this inclination area is about 4 %.

Lamp measurement report - 10 Nov 2017

PAR value and PAR spectrum

To make a statement how well the light of this light bulb is for growing plants, the PAR-area needs to be determined.



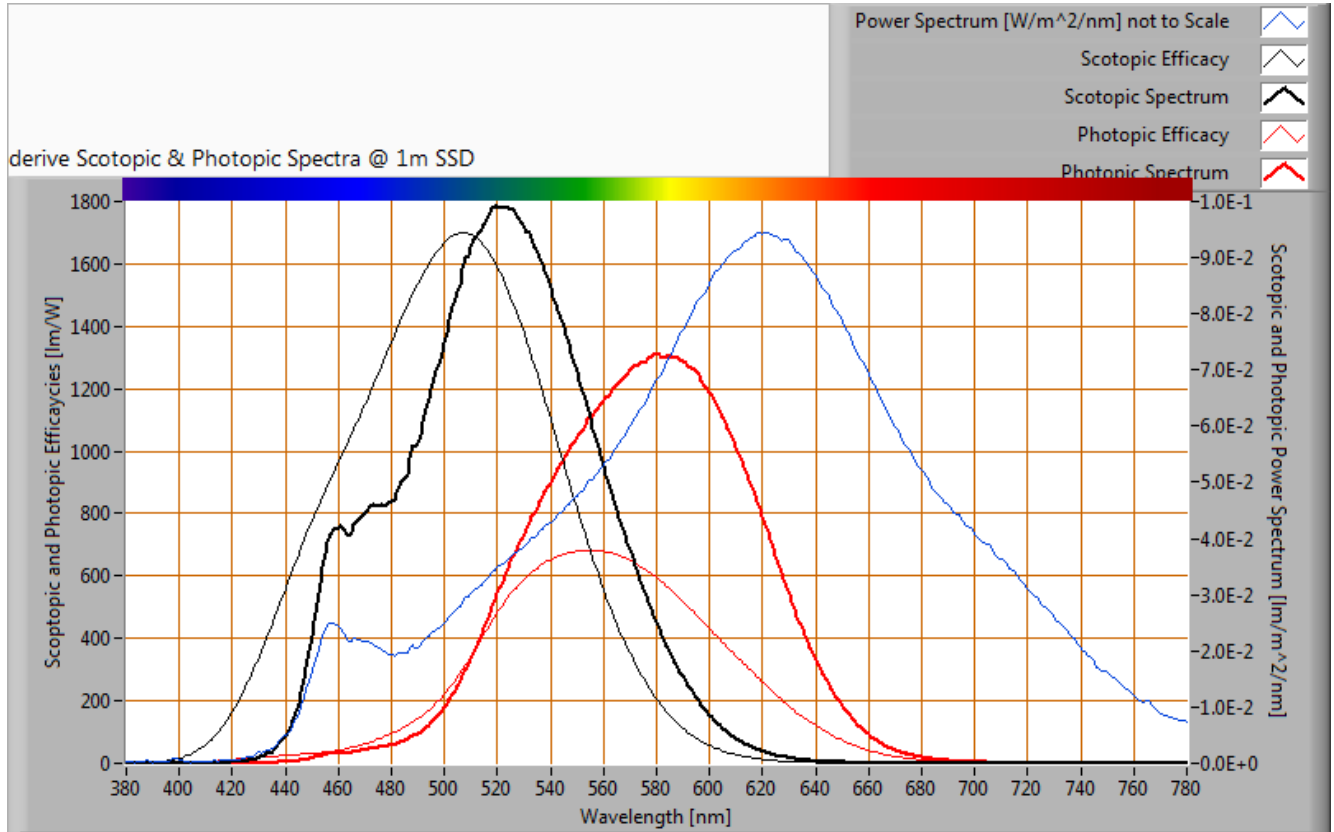
The photon spectrum, then the sensitivity curve and as result the final PAR spectrum of the light of this light bulb

parameter	value	unit
PAR number	0.1	uMol/s/m ²
PAR photon current	5.7	uMol/s
PAR photon efficacy	1.0	uMol/s/W

The PAR efficiency is 65 % (valid for the PAR wave length range of 400 - 700 nm). This is the maximum percentage of the total of photons in the light that is effectively used by the average plant (since the plant might not take 100 % of the photons at the frequency where its relative sensitivity is 100 %).

Lamp measurement report - 10 Nov 2017

S/P ratio

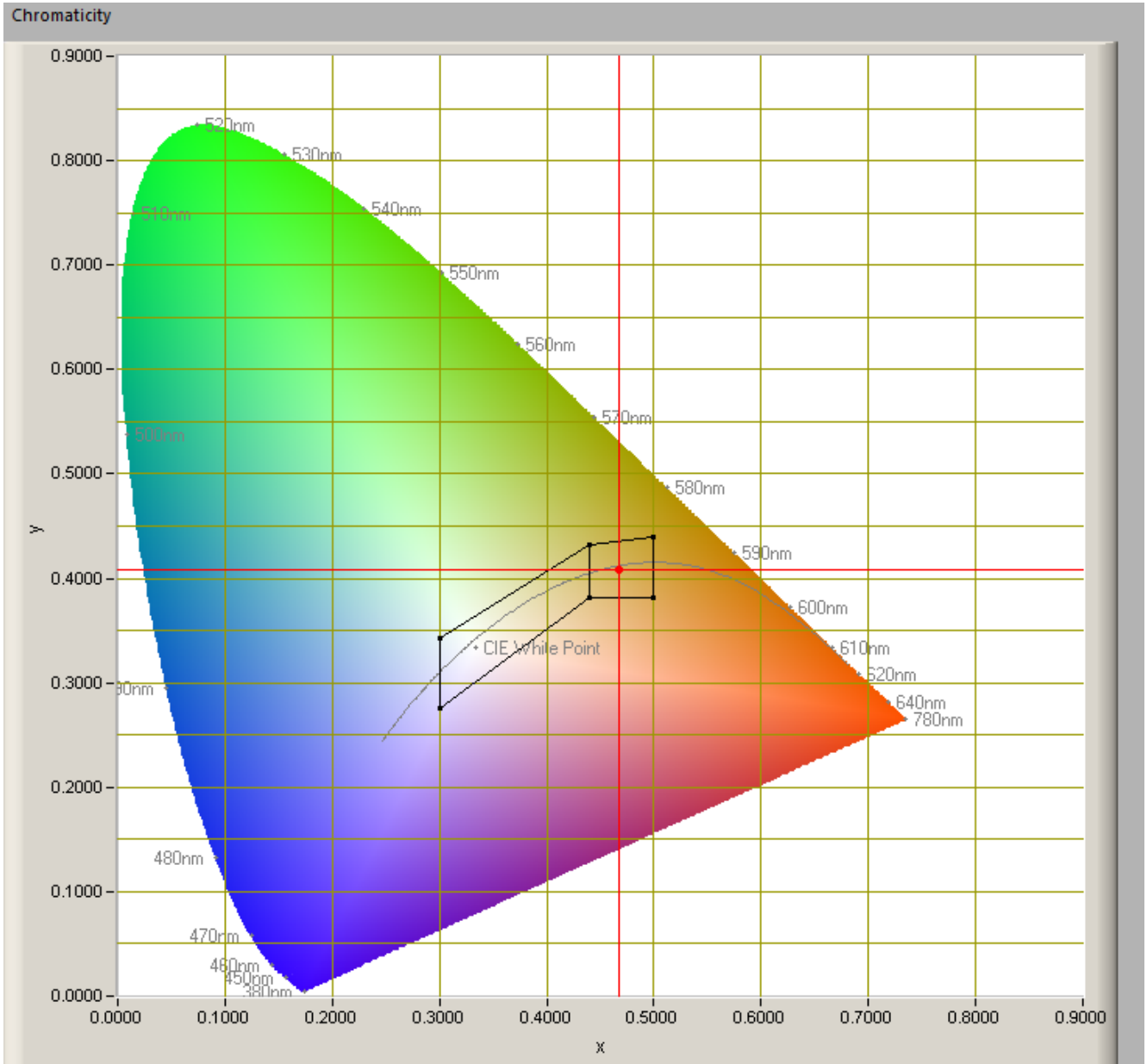


The power spectrum, sensitivity curves and resulting scotopic and photopic spectra (spectra energy content defined at 1 m distance).

The S/P ratio of the light coming from this lamp is 1.3.

Lamp measurement report - 10 Nov 2017

Chromaticity diagram



The chromaticity space and the position of the lamp's color coordinates in it.

The point of the light in this diagram is inside the area indicated with class B. This area indicates an area for signal lamps.

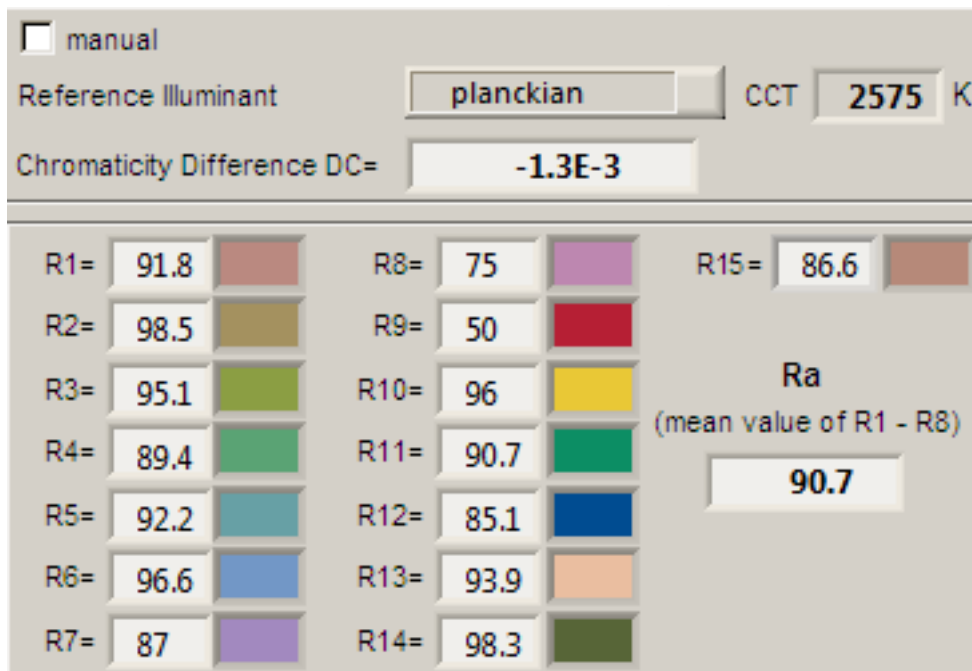
The color coordinates are $x=0.4087$ and $y=0.4680$.

Lamp measurement report - 10 Nov 2017

Color Rendering Index (CRI) or also Ra

Herewith the image showing the CRI as well as how well different colors are represented (rendered). The higher the number, the better the resemblance with the color when a black body radiator would have been used (the sun, or an incandescent lamp)

Each color has an index R_x , and the first 8 indexes ($R_1 \dots R_8$) are averaged to compute the R_a which is equivalent to the CRI.



CRI of the light of this lightbulb.

This value of 91 indicates how well the light of this lamp can render well a set of reference colors, this in comparison with the light of a reference source (for color temperatures $< 5000\text{K}$ a black radiator is used as reference and for color temperatures $> 5000\text{K}$ the sun or the light outside during the day).

The value of 91 is much bigger than the value of 80 that is considered as a minimum for working areas in general.

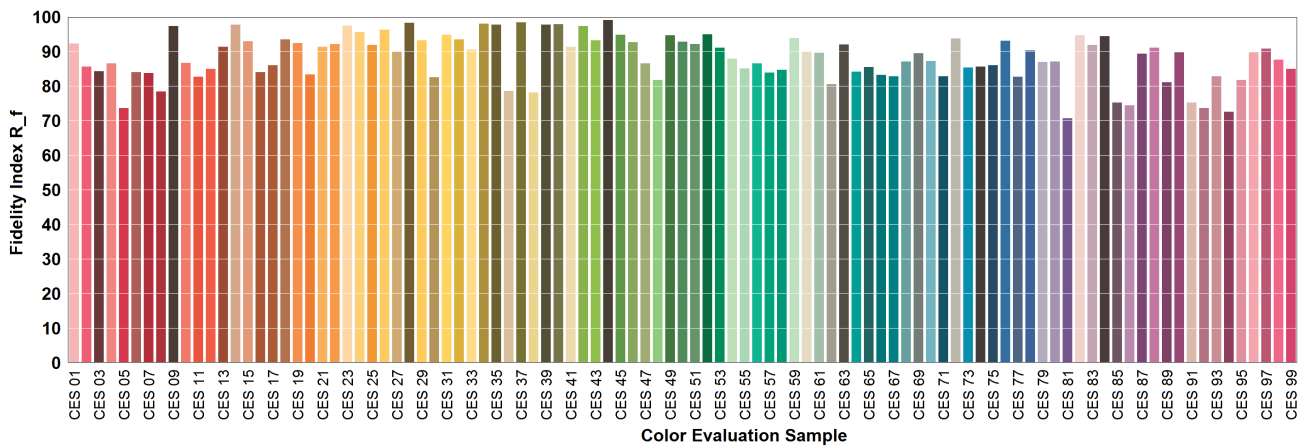
Note: the chromaticity difference is -0.0013 and indicates the distance to the Planckian Locus. There is a value mentioned of max $5.4\text{E-}3$ in section 5.3 of CIE 13.3-1995 however no further explanation of it.

An other reference with signal lights as a reference is given in the chromaticity diagram.

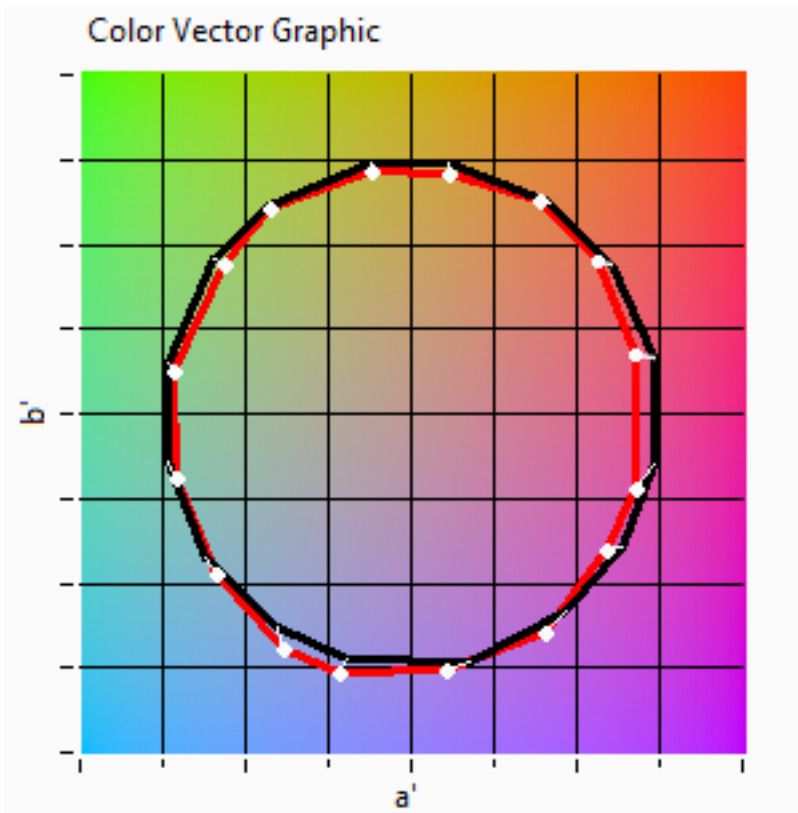
Lamp measurement report - 10 Nov 2017

Color quality scale TM-30-15

TM-30-15 is an improved indicator (over CRI) of how well colors are rendered. TM30-15 R_f = 88, R_g = 97.



TM-30-15-values for 99 samples for the light of this light bulb. The closer the value for a testcolor comes to 100, the more its rendition resembles that of a reference lightsource.

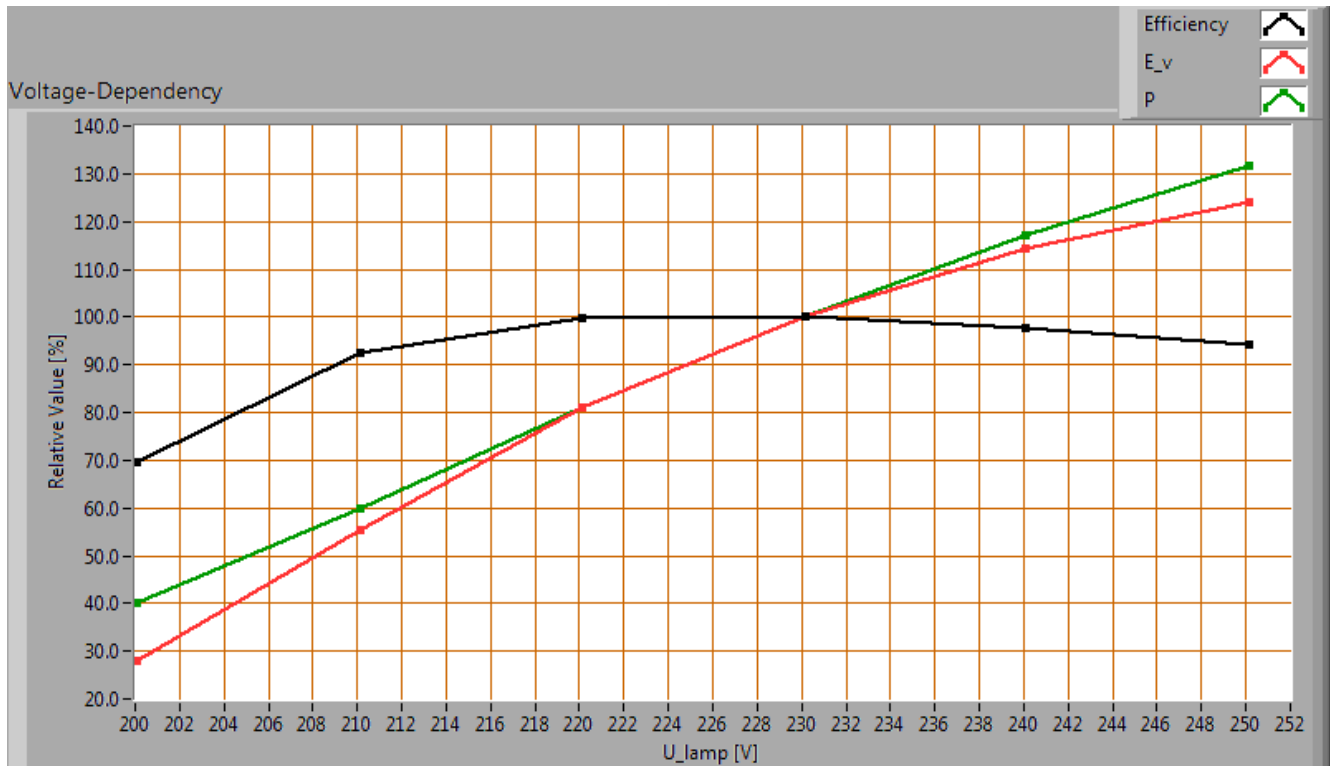


Graphical view of averaged color points for this light bulb compared to a reference source with the same color temperature.

Lamp measurement report - 10 Nov 2017

Voltage dependency

The dependency of a number of lamp parameters on the lamp voltage is determined. For this, the lamp voltage has been varied and its effect on the following light bulb parameters measured: illuminance E_v [lx], the lamp power P [W] and the luminous efficacy [lm/W] (this latter is estimated here by dividing the found E_v value by P).



Lamp voltage dependencies of certain light bulb parameters

There is a constant dependency of the illuminance when the power voltage varies between 200 - 250 V AC.

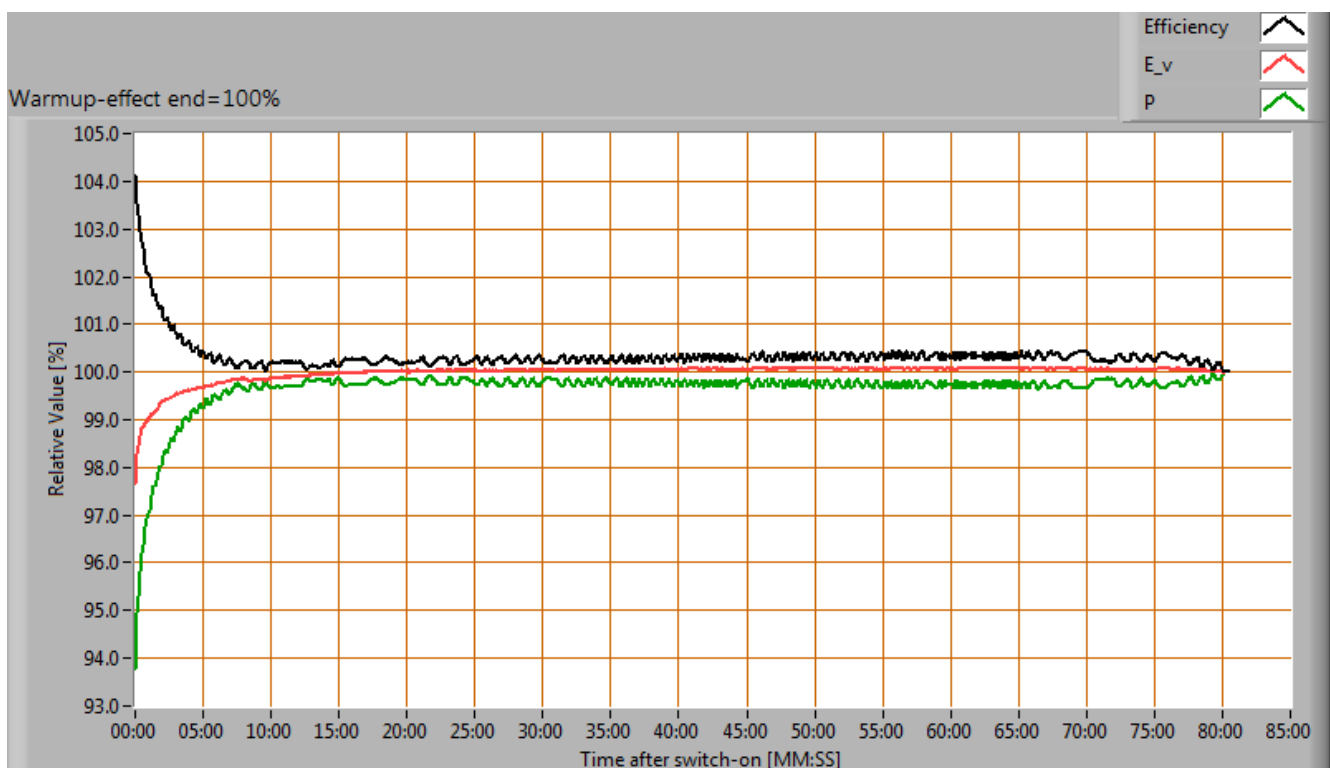
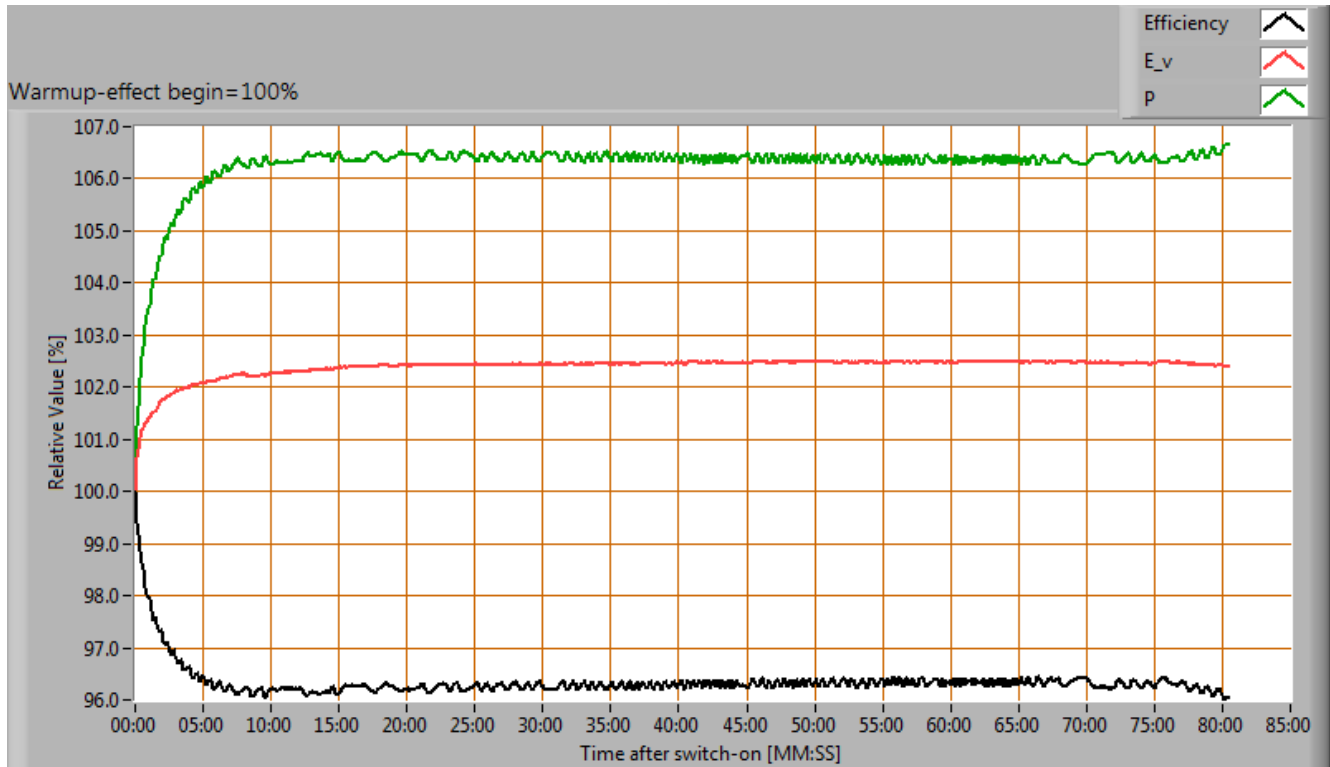
There is a constant dependency of the consumed power when the power voltage varies between 200 - 250 V AC.

When the voltage varies abruptly with + or - 5 V AC then this results in a variation of the illuminance of maximally 9.5 %. This difference in illuminance is possibly visible (when it occurs abruptly).

Lamp measurement report - 10 Nov 2017

Warm up effects

After switch on of a cold lamp, the effect of heating up of the lamp is measured on illuminance E_v [lx], the lamp power P [W] and the luminous efficacy [lm/W].



Effect of warming up on different light bulb parameters. In the first graph the 100 % level is put at begin, and in the last graph the 100 % level is put at the end.

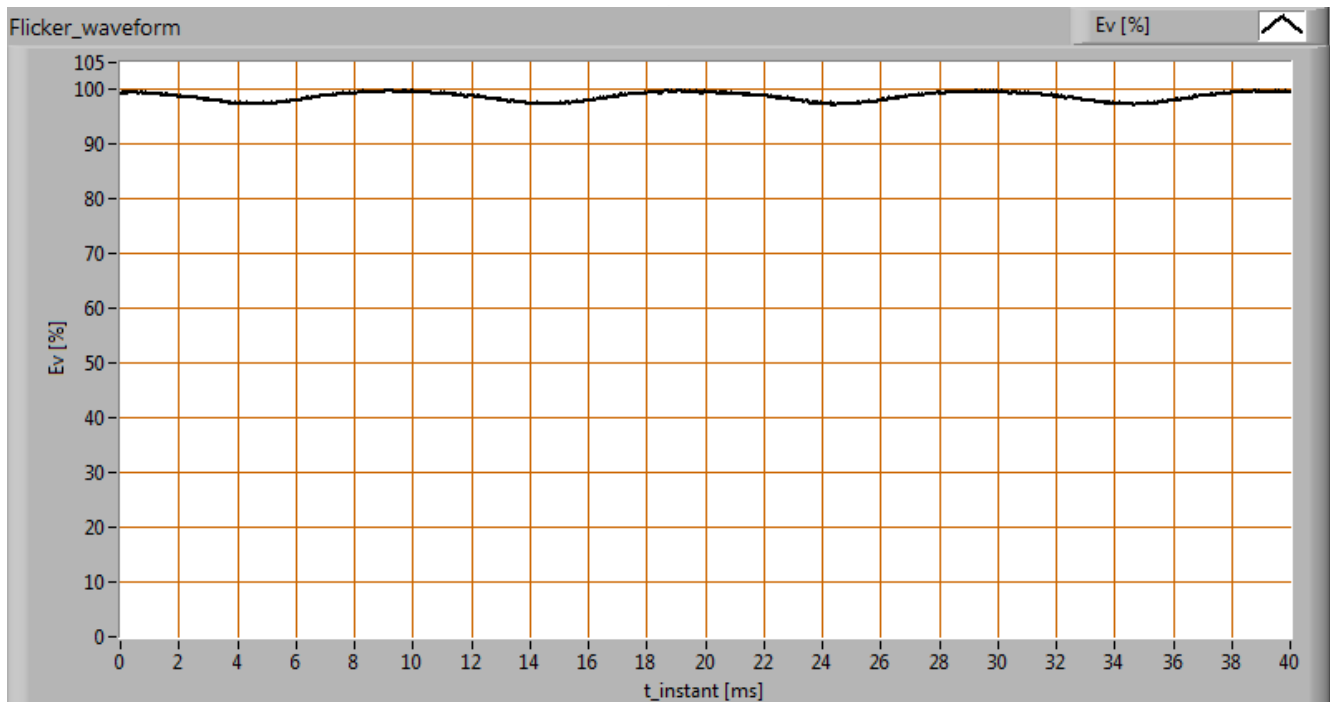
Lamp measurement report - 10 Nov 2017

During the warmup time the illuminance doesn't vary significantly (< 5 %).

During the warmup time the power varies during 3 minutes and increases with 7 %. The variation in efficacy (calculated as indication by simply dividing the illuminance by the power) during the warming up is -4 %. A very high negative value indicates a significant decrease for instance due to heating up of the lamp (decrease of lifetime).

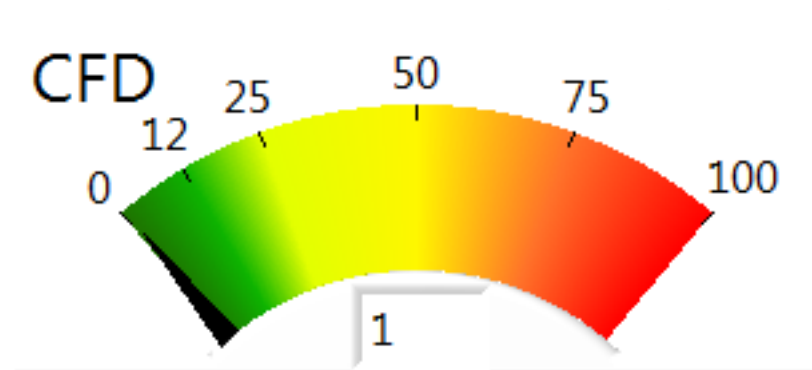
Measure of flickering

An analysis is done on the measure of flickering of the light output by this light bulb.



The measure of fast illuminance variation of the light of the light bulb

parameter	value	unit
Flicker frequency	99.8	Hz
Illuminance modulation index	1	%
Flicker index	0.004	[-]
Compact Flicker Degree	1	%



Flicker free.

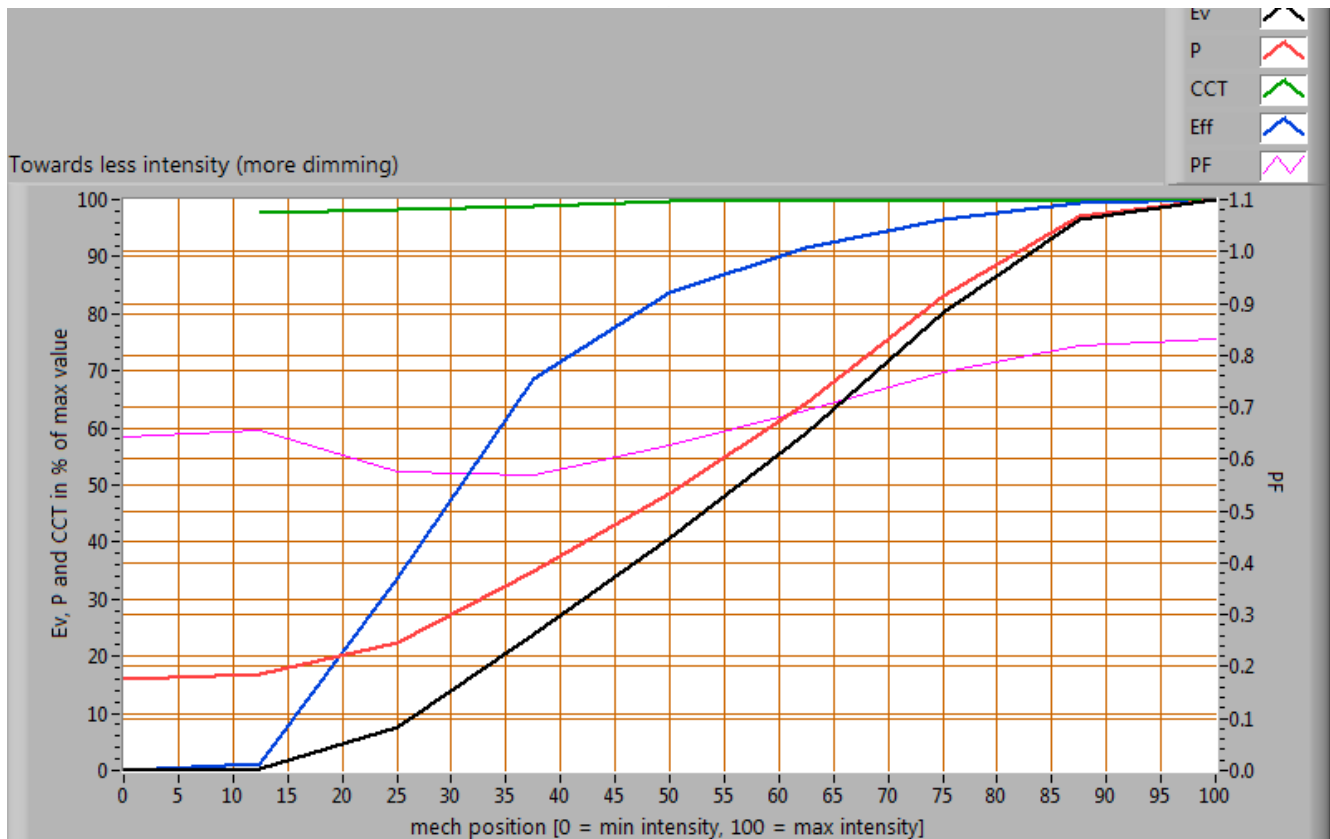
Lamp measurement report - 10 Nov 2017

The illuminance modulation index is computed as: $(\max_Ev - \min_Ev) / (\max_Ev + \min_Ev)$.

Dim-ability

The lamp has been tested on the following dimmer(s): the Busch Jaeger 6523 U dimmer.

The Busch Jaeger 6523 U.



Dimming with the Busch Jaeger 6523 U.

When inserting the dimmer at its no dimming position and the comparing with the situation without dimmer, then the influence on the following parameters is measured (negative value is increase):

- the illuminance: 2 %;
- the consumed power: 2 %.

The intensity is variable in the mechanical area between 0.0 - 100.0 %.

The dimmer set in that area results in a variation of the illuminance between 0 - 100 % (note that in that 100 % the drop in illuminance when inserting the dimmer is not counted, see for that value above).

There is almost no effect on the color temperature when dimming is increased.

The remaining power consumption at maximal dimming position is 0.9 W.

Lamp measurement report - 10 Nov 2017

Melanopic effect

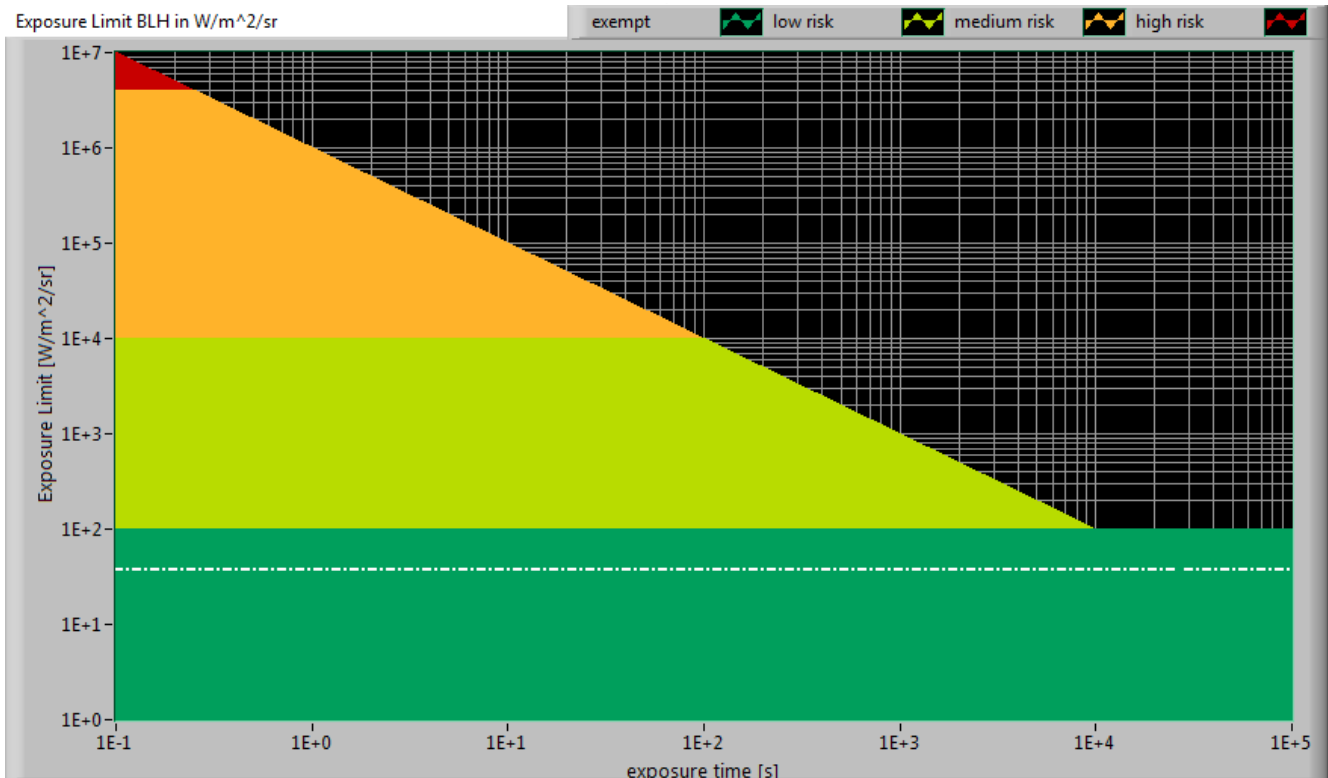
The melanopic effect shows the level of impact the light of this lamp can have on the day-night rhythm of human beings (as well as the suppression of melatonin production). The important parameters (according to norm DIN SPEC 5031-100:2015-08):

melanopic effect factor	0.390
k_mel trans (25 years)	1.041
k_mel trans (32 years)	1.000
k_mel trans (50 years)	0.865
k_mel trans(75 years)	0.649
k_mel trans(90 years)	0.525
k_pupil(25 years)	1.088
k_pupil(32 years)	1.000
k_pupil(50 years)	0.792
k_pupil(75 years)	0.543
k_pupil(90 years)	0.416

Lamp measurement report - 10 Nov 2017

Blue Light Hazard

The amount of blue light and the harm it can cause on the retina has been determined. Herewith the results.



The level of blue light of this lamp related to the exposure limit and the different classification areas.

L_lum0 [mm]	6	Dimension of brightest part of lamp in C0-C180 direction.
L_lum90 [mm]	8	Dimension of brightest part of lamp in C90-C270 direction.
SSD_500lx [mm]	121	Calculated distance where $E_v = 500$ lux. This computation is valid when it is in the far field of the lamp. Note: if this value 200 mm then the distance of 200 mm is taken as proposed in the norm IEC 62471:2006.
Start of far field [mm]	50	Minimum distance at which the lamp can be seen as a point source. In this area the E_v is linearly dependent from $(1/distance)^2$.
300-350 nm values stuffed with 0s	yes	In the event OliNo has measured with a SpB1211 spectrometer without UV option then the irradiance data of 300-349 nm is missing. For lamps where there is already no energy content near 350 nm, the values 300-349 can also be set at zero then.
alpha_C0-C180 [rad]	0.030	(Apparent) source angle in C0-C180 direction.
alpha_C90-C270 [rad]	0.040	(Apparent) source angle in C90-C270 direction.

Lamp measurement report - 10 Nov 2017

alpha_AVG [rad]	0.035	Average (apparent) source angle. If average ≥ 0.011 rad then the exposure limit is computed with radiance L_b . Otherwise with irradiance E_b .
Exposure value [$W/m^2/sr$]	3.70E+1	Blue Light Hazard value for this lamp, measured straight underneath the lamp. Computation is referenced to L_b .
Blue Light Hazard risk group	0	0=exempt, 1=low, 2 = moderate, 3=high risk.

Disclaimer

The information in this OliNo report is created with the utmost care. Despite this, the information could contain inaccuracies. OliNo cannot be held liable in this instance nor can the data in this report be legally binding.

We strive to adhere to all of the conditions of any copyright holder in the publication of any illustration/article or item. In the event that we unintentionally violate said copyright holder's conditions in our articles, we kindly ask to be contacted here at OliNo so that we can resolve any disputes, issues or misunderstandings.

License

It is permitted ONLY to use or publish this report in its entirety and in unaltered form via internet or other digital or written media in any form. To guarantee the reliability and accuracy of the report, it is strictly prohibited to change or alter parts of the report and/or republish it in a modified content.