

Lamp measurement report – 25 March 09 for LedNed

LedNed spotlight MR16GU5.3 CW



Lamp measurement report – 25 March 09 for LedNed

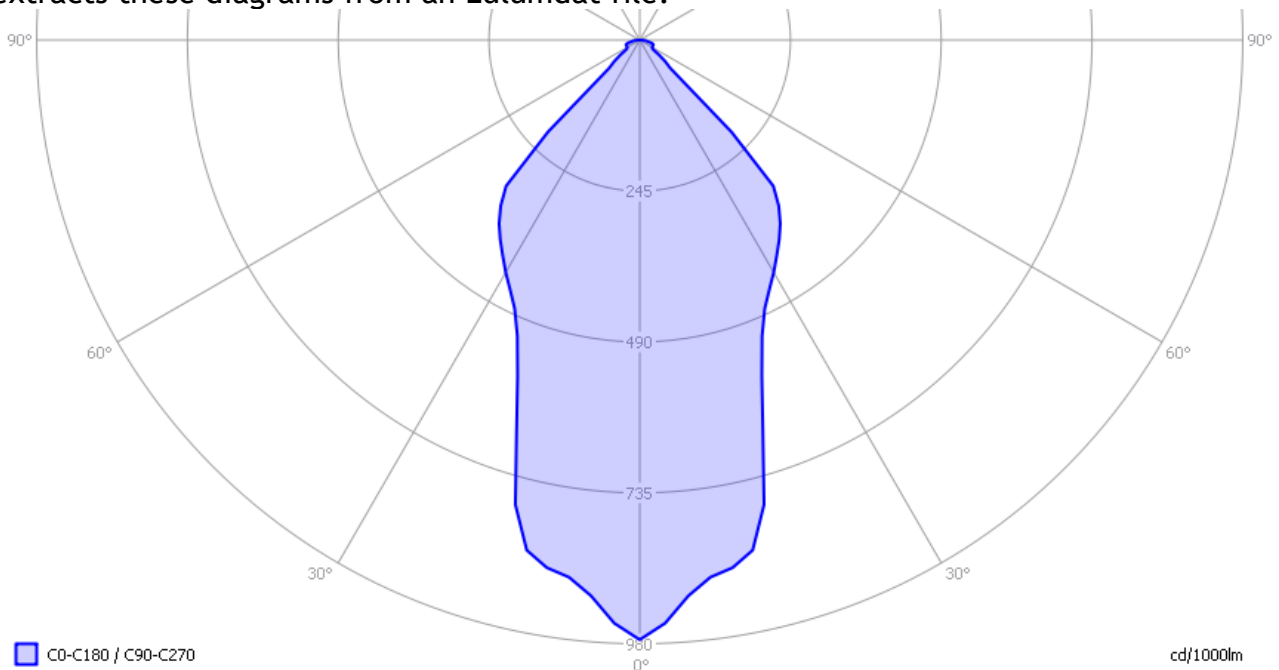
Summary measurement data

parameter	meas. result	remark
Color temperature	6421 K	Bright white
Luminous intensity I_v	113 Cd	
Beam angle	49 deg	
Power P	2.6 W	
Power Factor	0.67	For every 1 kWh net power consumed, there has been 1.1 kVAhr for reactive power.
Luminous flux	116 lm	
Luminous efficacy	45 lm/W	
CRI_Ra	75	Color Rendering Index.
Coordinates chromaticity diagram	x=0.3143 and y=0.3276	
Fitting	GU5.3/MR16	
D x H external dimensions	50 x 57 mm	External dimensions of the lightbulb.
D luminous area	28 mm	Dimensions of the luminous area (used in Eulumdat file). This is equal to the size of the frontglass.
General remarks		<p>The ambient temperature during the whole set of measurements was 24-27.5 deg C.</p> <p>Warm up effect: during the warming up the illuminance and the consumed power reduce with 13 % and 8 % respectively.</p> <p>Voltage dependency: the illuminance and power consumption are almost independent on the voltage.</p> <p>The color of the led depends on the color temperature, see also the photo at the end of this report.</p>

Lamp measurement report – 25 March 09 for LedNed

Eulumdat light diagram

An interesting graph is the light diagram, indicating the intensity in the C0-C180 and the C90-C270 plane. This light diagram below comes from the program Qlumedit, that extracts these diagrams from an Eulumdat file.



The light diagram giving the radiation pattern.

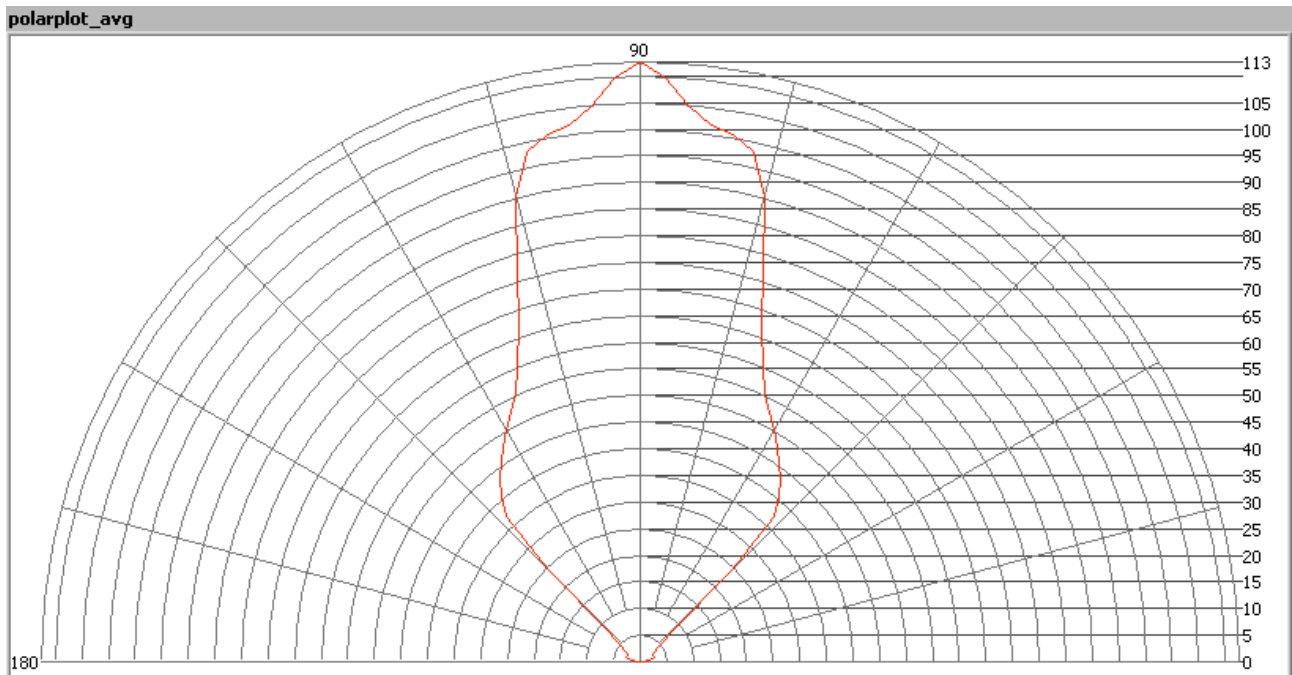
It indicates the luminous intensity around the light bulb. This light bulb has symmetry over the z-axis, so the C0-C180 and C90-C270 planes show the same radiation pattern result.

The unit is Cd/1000lm, meaning the intensity in Cd assuming there would be 1000 lumen in the measured light bulb. This enables comparing different types of light bulbs.

Illuminance E_v at 1 m distance, or luminous intensity I_v

Herewith the plot of the *averaged* luminous intensity I_v as a function of the inclination angle with the light bulb.

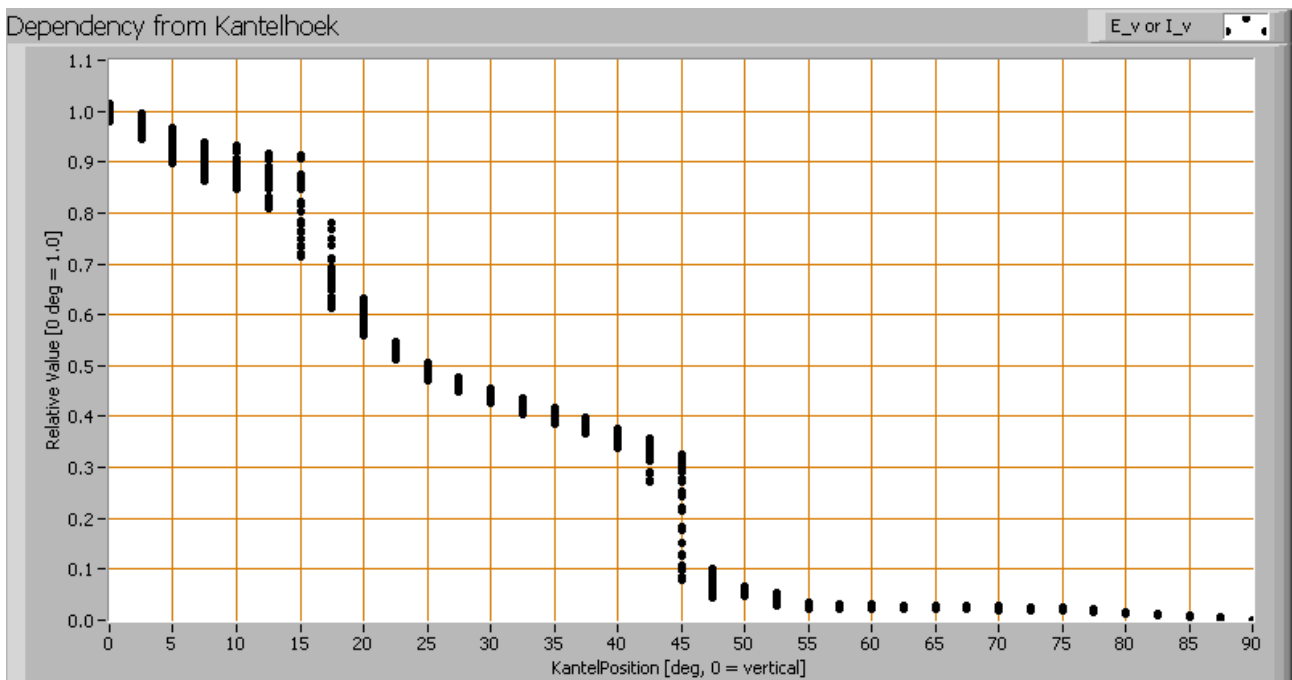
Lamp measurement report – 25 March 09 for LedNed



The radiation pattern of the light bulb.

This radiation pattern is not the same as the one given earlier. This is because of the (small) differences of beam angles in the different planes. In this graph the luminous intensity is given in Cd.

These averaged values are used (later) to compute the lumen output.



Lamp measurement report – 25 March 09 for LedNed

Intensity data of every measured turn angle at each inclination angle.

This plot shows per inclination angle the intensity measurement results for each turn angle at that inclination angle. There is some more spread in intensity results at low inclination angles, when the illuminance is varying depending on the inclination angle. There is an abrupt decrease in illuminance at 45 deg.

When using the average values per inclination angle, the beam angle can be computed, being 49 degrees.

Luminous flux

With the averaged illuminance data at 1 m distance, taken from the graph showing the averaged radiation pattern, it is possible to compute the luminous flux.

The result of this computation for this light spot is a luminous flux of 116 lm.

Luminous efficacy

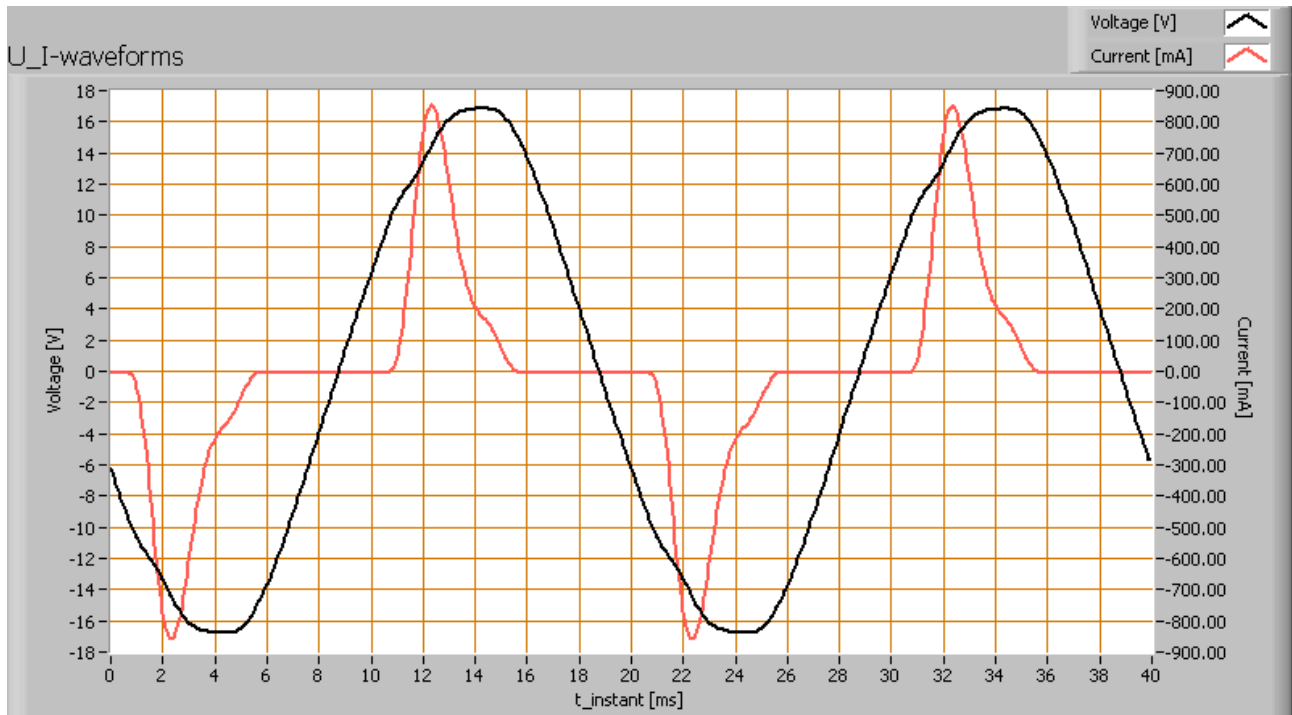
The luminous flux being 116 lm, and the power of the lightbulb being 2.6 W, yields a luminous efficacy of 45 lm/W.

A power factor of 0.67 means that for every 1 kWh net power consumed, a reactive component of 1.1 kVAr was needed.

Light bulb voltage	12.0 V
Light bulb current	323 mA
Power P	2.6 W
Apparent power S	3.9 VA
Power factor	0.67

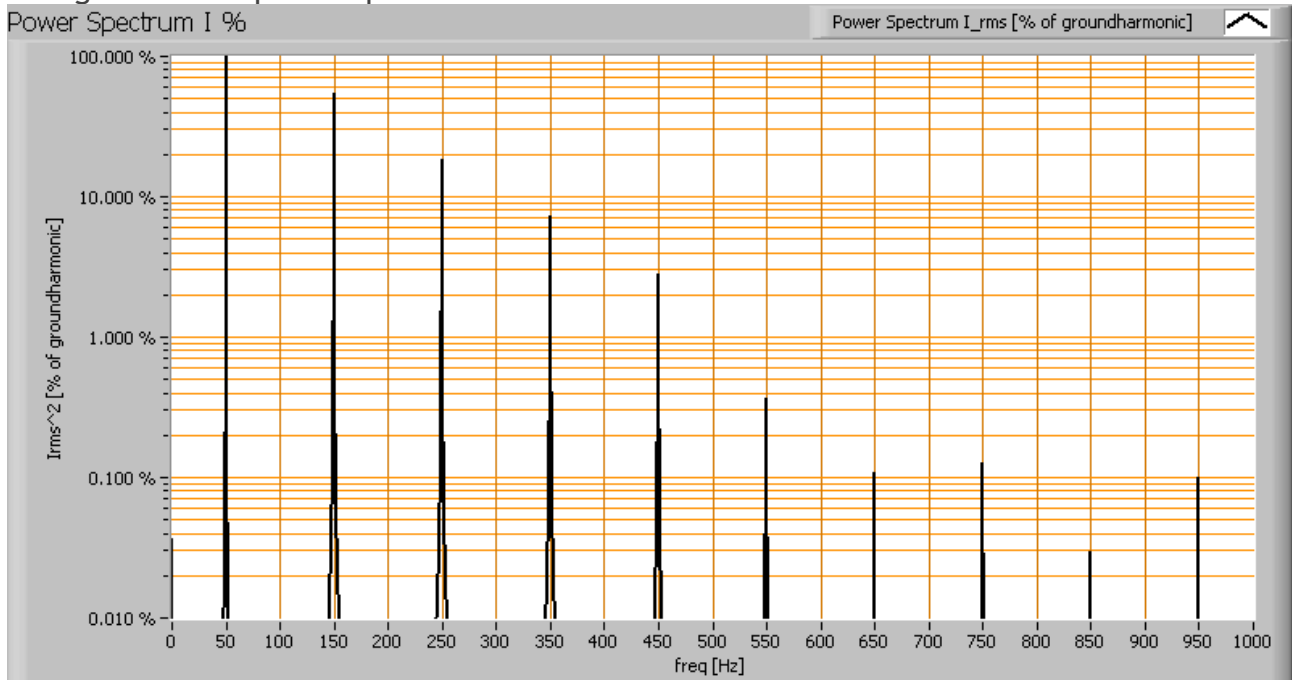
Of this light bulb the voltage across and the resulting current through it are measured and graphed.

Lamp measurement report – 25 March 09 for LedNed



Voltage across and current through the lightbulb

The current has peaks; it seems that a capacitor is charged close to the tops of the voltage. Also the power spectrum of the current is determined.

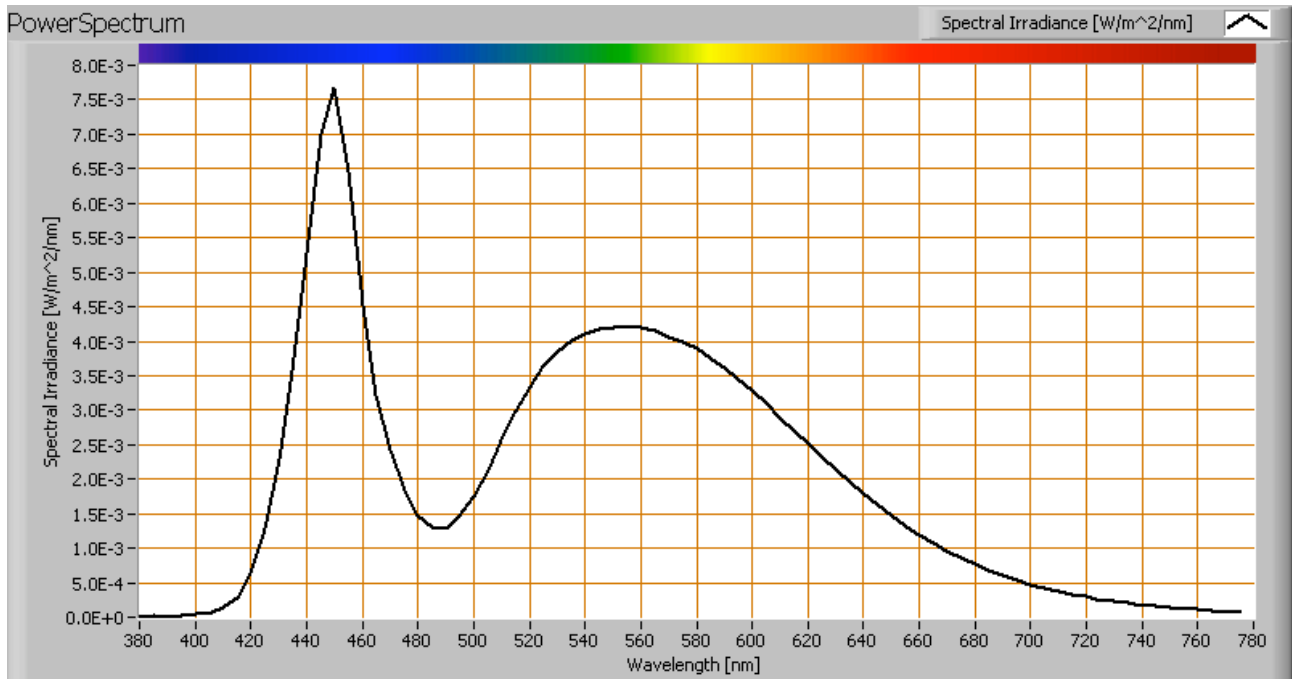


The powerspectrum of the current through the light bulb.

There are higher harmonics apparent in the spectrum.

Lamp measurement report – 25 March 09 for LedNed

Color temperature and Spectral power distribution

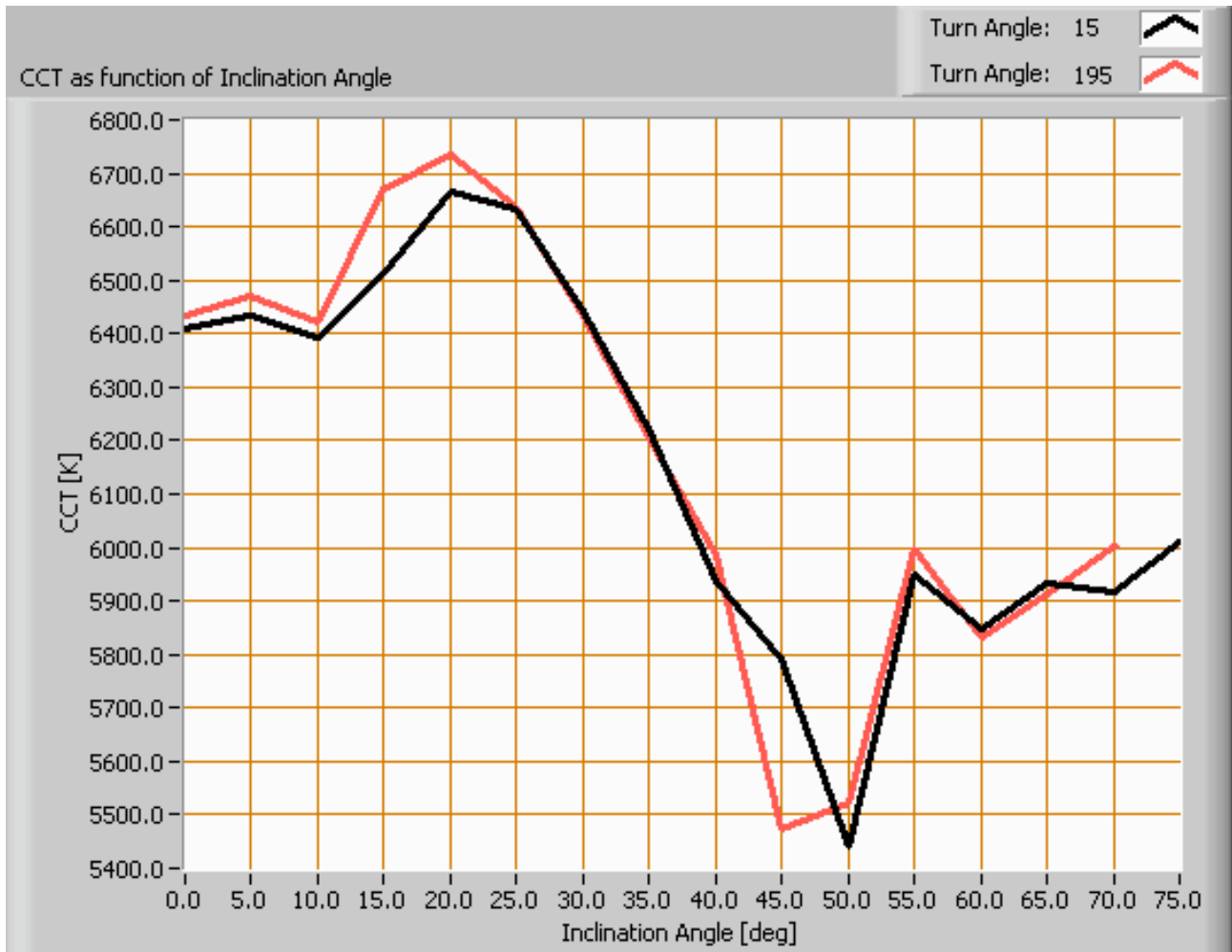


The spectral power distribution of this light bulb.

The measured color temperature is about 6400 K which is bright white.

This color temperature is measured straight underneath the light bulb. Below a graph showing the color temperature for different inclination angles.

Lamp measurement report – 25 March 09 for LedNed



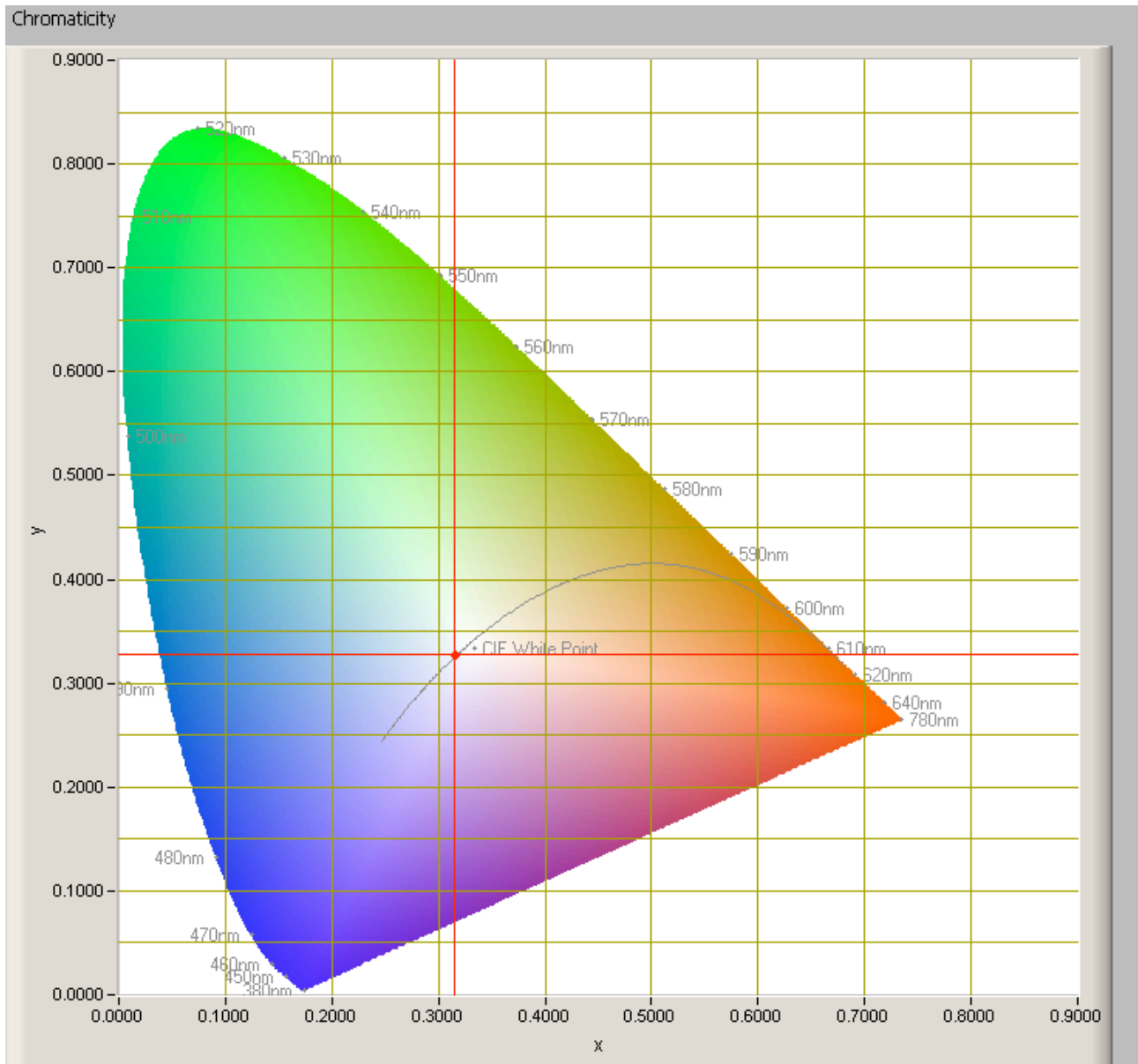
Color temperature as a function of inclination angle.

The color temperature is given for inclination angles up to 50 degrees since at larger inclination angles there is too little illumination.

The value remains constant within 8-10 %.

Lamp measurement report – 25 March 09 for LedNed

Chromaticity diagram



The chromaticity space and the position of the lamp's color coordinates in it.

The light coming from this lamp is on top of the Planckian Locus (the black path in the graph).

Its coordinates are $x=0.3143$ and $y=0.3276$.

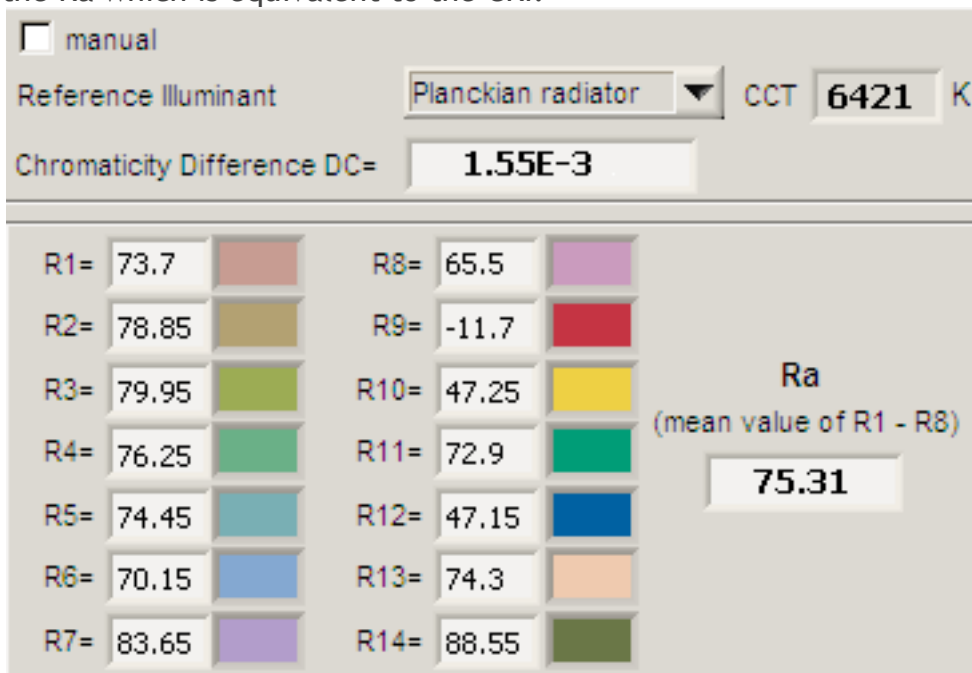


Lamp measurement report – 25 March 09 for LedNed

Color Rendering Index (CRI) or also Ra

Herewith the image showing the CRI as well as how well different colors are represented (rendered). The higher the number, the better the resemblance with the color when a black body radiator would have been used (the sun, or an incandescent lamp).

Each color has an index R_x , and the first 8 indexes ($R_1 .. R_8$) are averaged to compute the R_a which is equivalent to the CRI.



CRI of the light of this lightbulb.

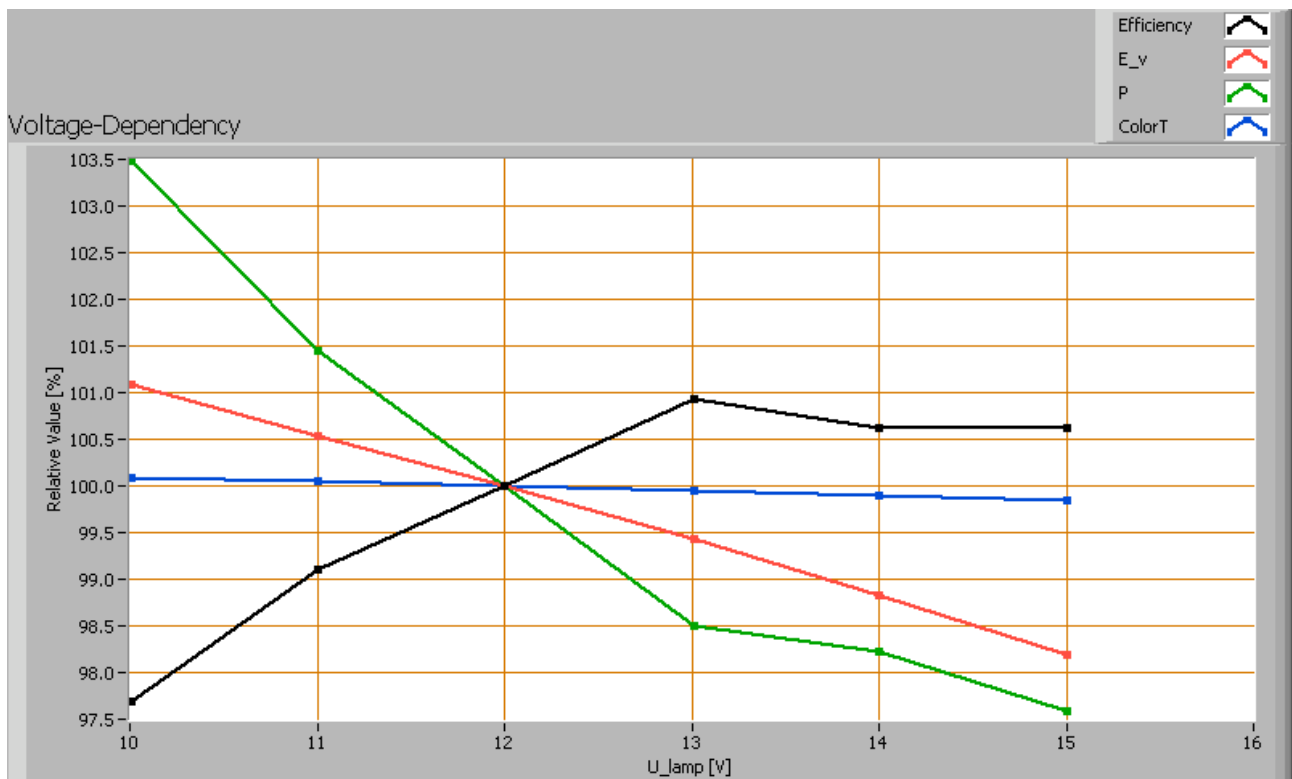
The value of 75 is lower than 80 which is considered a minimum value for indoor usage.

Note: the chromaticity difference is 0.0016 indicates the distance to the Planckian Locus. Its value is lower than 0.0054, which means that the calculated CRI result is meaningful.

Voltage dependency

The dependency of a number of lamp parameters on the lamp voltage is determined. For this, the lamp voltage has been varied and its effect on the following lamp parameters measured: illuminance E_v [lx], color temperature CT or correlated color temperature CCT [K], the lamp power P [W] and the luminous efficacy [lm/W].

Lamp measurement report – 25 March 09 for LedNed



Lamp voltage dependencies of certain light bulb parameters, where the value at 12 V is taken as 100 %.

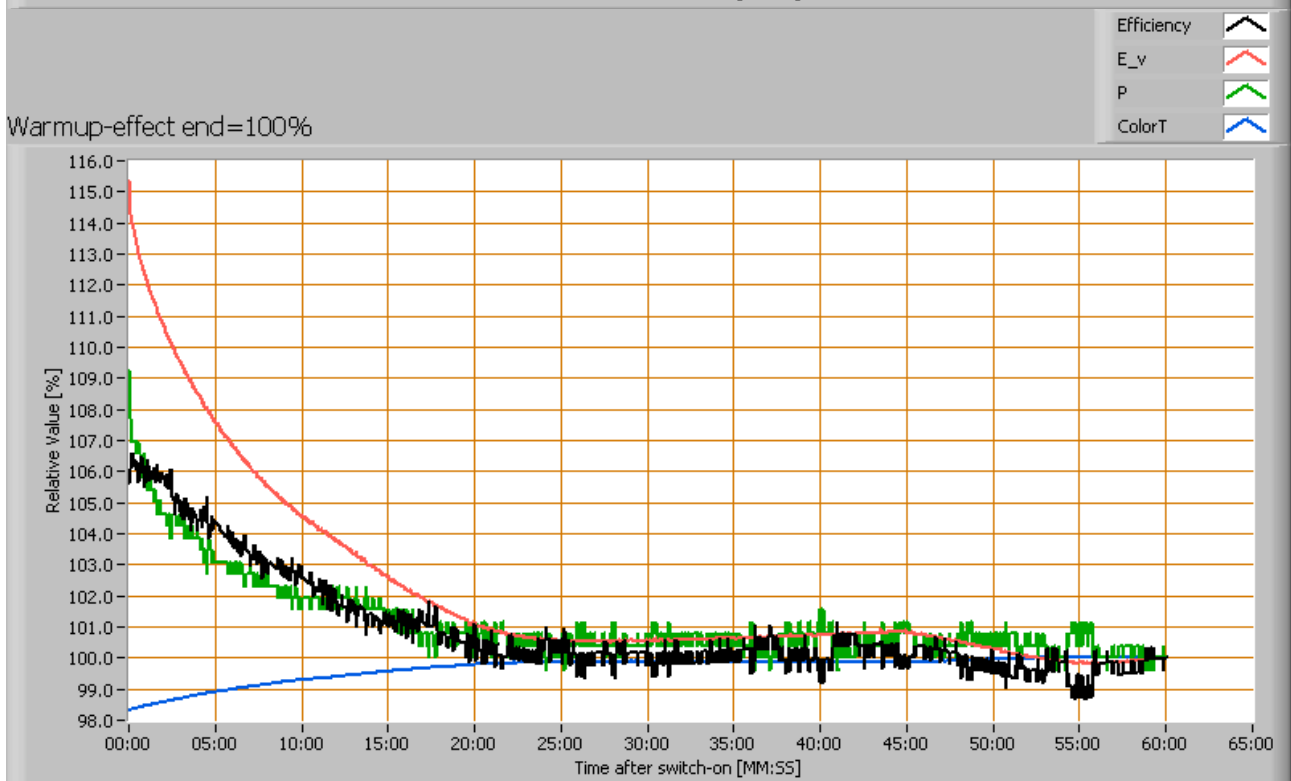
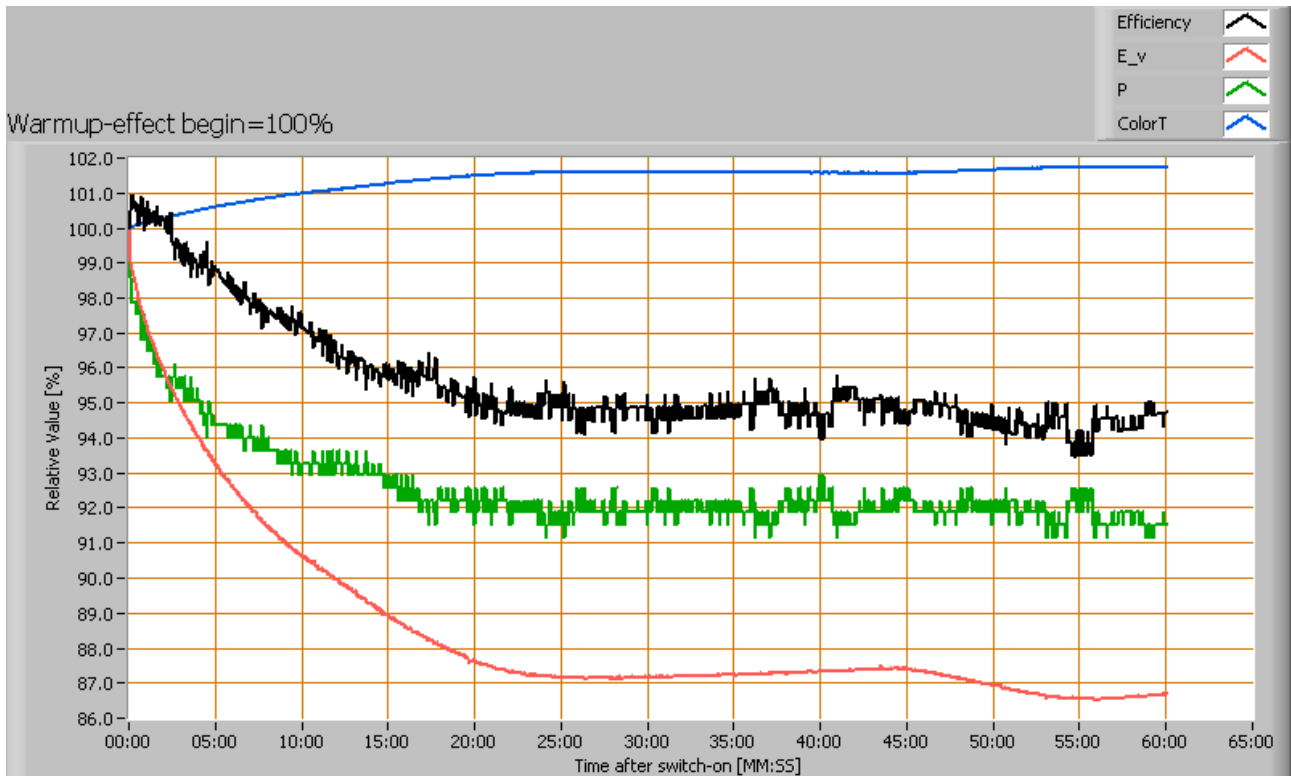
The consumed power and the illuminance vary slightly when the voltage varies between 10-15 V.

When the voltage at 12 V varies with + and - 0.25 V (comparable to +/- 5 V at 230 V), then the illuminance varies with less than + and - 0.25 %, which will not be visible when the voltage changes abruptly.

Warm up effects

After switch on of a cold lamp, the effect of heating up of the lamp is measured on illuminance E_v [lx], color temperature CT or correlated color temperature CCT [K], the lamp power P [W] and the luminous efficacy [lm/W].

Lamp measurement report – 25 March 09 for LedNed



Effect of warming up on different light bulb parameters. At top the 100 % level is put at begin, and at bottom at the end.

Lamp measurement report – 25 March 09 for LedNed

During warm up time of about 25 minutes, the light bulb gives about 11 % less light and consumes about 8 % less power.

Led color and color temperature

The leds with an orange hue emit warm white light, and the led with a yellow hue emit bright white light. This can be understood considering that warm white is made by using more phosphorescent with red/orange hue.



Left the led with orange hue (warm white) and right the led with yellow hue (bright white)



Lamp measurement report – 25 March 09 for LedNed

Disclaimer

The information in this OLiNo report is created with the utmost care. Despite of this the information can have inaccuracies. OLiNo cannot be held liable for the content of the information in this report nor for the consequences of its use. The data in this report is not legally binding.