

**Lamp measurement report – 19 July 2010**

2x led tubes 120 cm in build-in luminaire

ARM2x1200-A-INB-G4-NW

by

Led Light Europe



## Lamp measurement report – 19 July 2010

### Summary measurement data

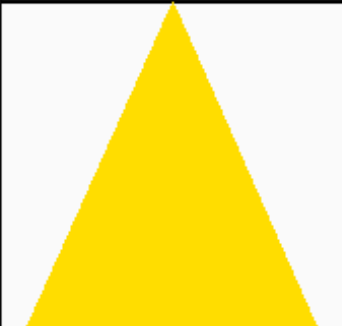
parameter	meas. result	remark
<u>Color temperature</u>	5622 K	Cold white
Luminous intensity $I_v$	1233 Cd	Measured straight underneath the lamp
Illuminance modulation index	16 %	Measured straight underneath the lamp. Is a measure for the amount of flickering.
Beam angle	104 deg	104° for the C0-C180 plane (crossing length direction of the tube) and 86° for the C90-C270 plane (length direction). This is virtually the same value.
Power P	39.4 W	
Power Factor	0.96	For every 1 kWh net power consumed, there has been 0.3 kVAhr for reactive power.
THD	15 %	Total Harmonic Distortion
Luminous flux	2696 Lm	
Luminous efficacy	68 Lm/W	
CRI_Ra	61	Color Rendering Index.
Coordinates chromaticity diagram	x=0.3298 and y=0.3598	
Fitting	FL-tube	This Tube Light is connected directly to the grid voltage of 230 V AC.
PAR-value	9.7 $\mu\text{Mol/s/m}^2$	The number of photons seen by an average plant when it is lit by the light of this light bulb. Value valid at 1 m distance from light bulb.
PAR-photon efficacy	0.5 $\mu\text{Mol/s/W}_e$	The total emitted number of photons by this light, divided by its consumption in W. It indicates a kind of efficacy in generating photons.

## Lamp measurement report – 19 July 2010

S/P ratio	1.8	This factor indicates the amount of times more efficient the light of this light bulb is perceived under scotopic circumstances (low environmental light level).
L x W x H external dimensions	1200 x 300 x 90 mm	External dimensions of the luminaire.
L x W luminous area	1156 x 261 mm	Dimensions of the luminous area (used in Eulumdat file). This is equal to the dimensions of the surface of the reflector at the front.
General remarks		<p>The ambient temperature during the whole set of measurements was 26.5 deg C. The hottest temperature of the reflector gets about a few degrees hotter than ambient. The tubes get about 10 degrees warmer.</p> <p>Warm up effect: during the warm up time the illuminance decreases with about 6 %.</p> <p>Voltage dependency: the power consumption and illuminance do not depend significantly when the voltage is varied from 200 - 250 V.</p> <p>At the end an additional photo.</p>

## Lamp measurement report – 19 July 2010

### Overview table

m.	Ø 50%		C0-180: 104° C90-270: 86°	E (lux)	Luminaire Efficacy
	C0-180	C90-270			68 (lumens per Watt)
0.25	0.64	0.47		19720	Half-peak diam C0-180
0.5	1.28	0.94		4930	2.57 x diameter(m)
1	2.57	1.87		1233	Half-peak diam C90-270
1.5	3.85	2.81		548	1.87 x diameter(m)
3	7.71	5.61		137	Illuminance
4	10.27	7.49		77	1233 / distance <sup>2</sup> (lux)
5	12.84	9.36	49	Total Output	2696 (lumens)

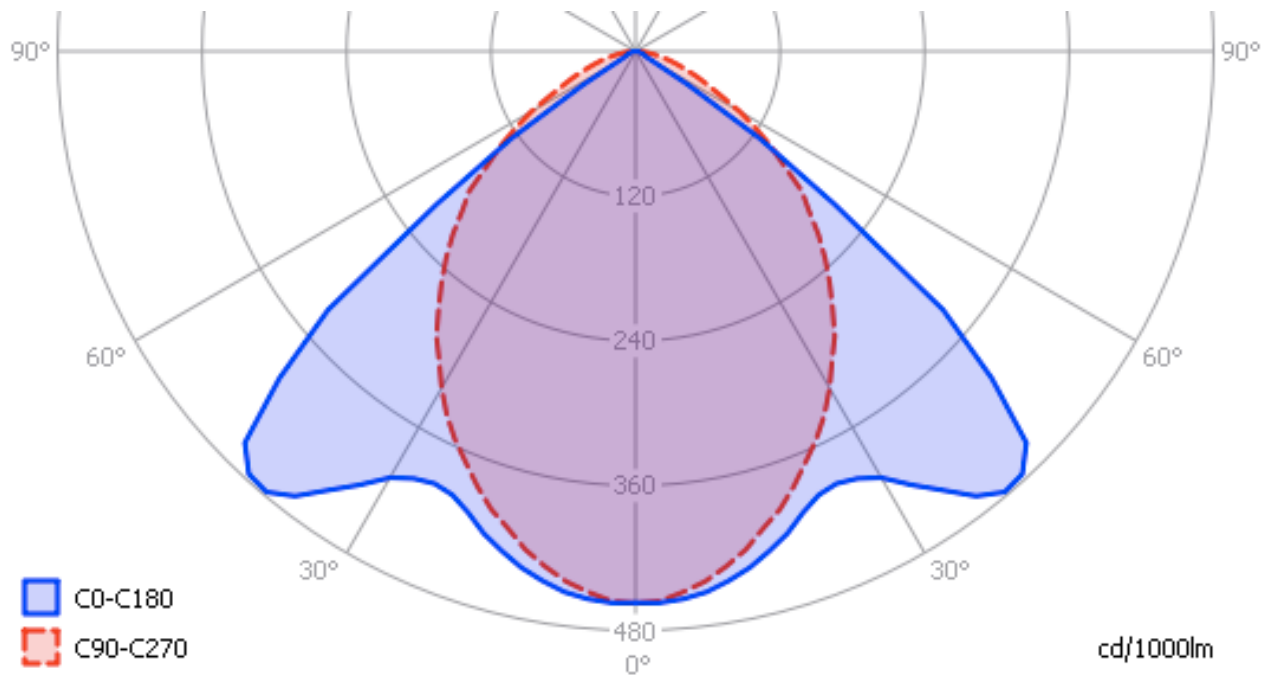
The overview table is explained on the OLiNo website.

Please note that this overview table makes use of calculations, use this data with care as explained on the OLiNo site. E (lux) values are not accurate, when within 5 x 1185 mm (diagonal dimension) ≈ 6000 mm. Within this distance from the lamp, the measured lux values will be less than the computed values in this overview as the measurements are then within the near field of the lamp.

### Eulumdat light diagram

This light diagram below comes from the program Qlumedit, that extracts these diagrams from an Eulumdat file. It is explained on the OLiNo site.

## Lamp measurement report – 19 July 2010



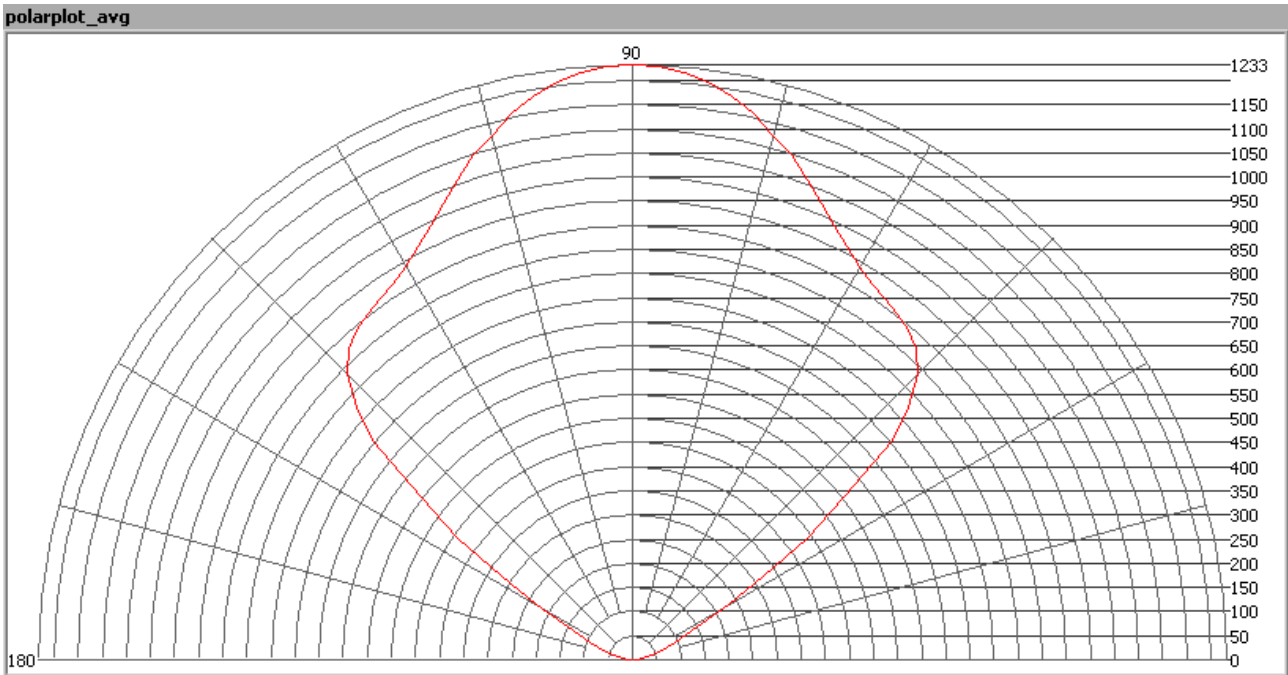
*The light diagram giving the radiation pattern.*

It indicates the luminous intensity around the light bulb. The direction or plane C0-C180 cuts the lamp in the direction crossing the length direction of the tube, and the C90-C270 plane cuts the lamp in the length direction.

### Illuminance $E_v$ at 1 m distance, or luminous intensity $I_v$

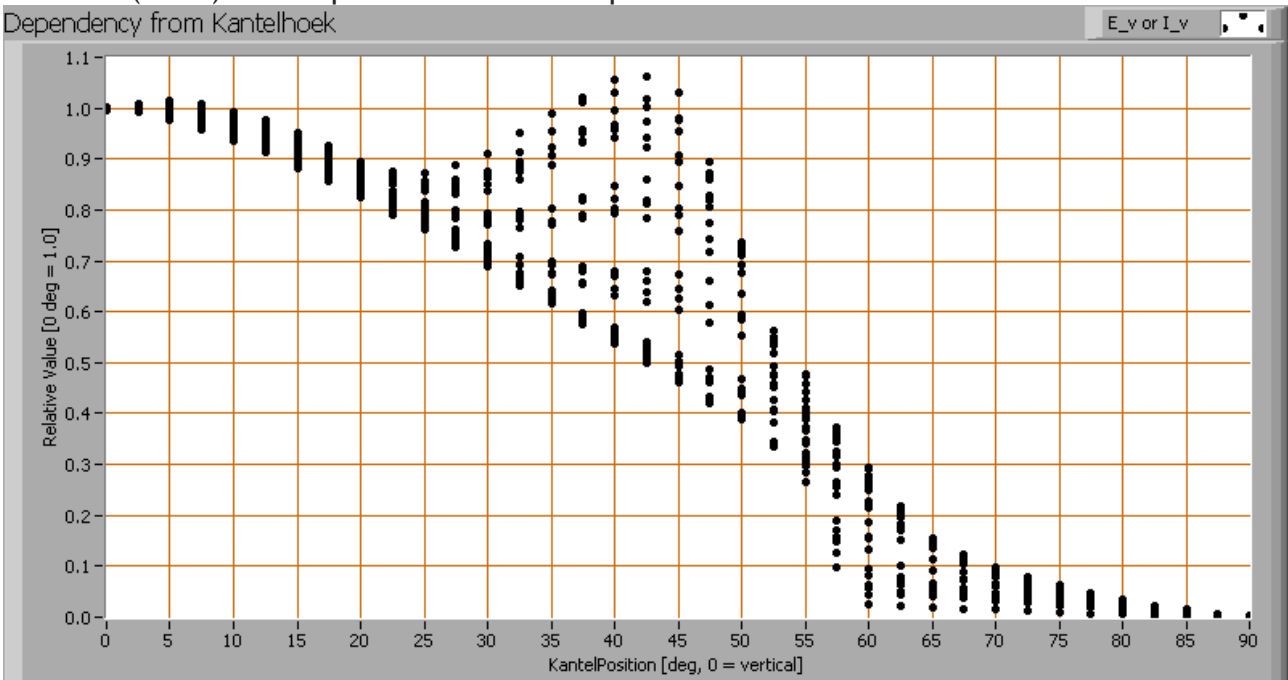
Herewith the plot of the *averaged* luminous intensity  $I_v$  as a function of the inclination angle with the light bulb.

## Lamp measurement report – 19 July 2010



*The radiation pattern of the light bulb.*

This radiation pattern is the average of the light output of the light diagram given earlier. Also, in this graph the luminous intensity is given in Cd. These averaged values are used (later) to compute the lumen output.



*Intensity data of every measured turn angle at each inclination angle.*

## Lamp measurement report – 19 July 2010

This plot shows per inclination angle the intensity measurement results for each turn angle at that inclination angle. There normally are differences in illuminance values for different turn angles. However for further calculations the averaged values will be used. When using the average values per inclination angle, the beam angle can be computed, being 104° in the C0-C180 plane and 86° in the C90-C270 plane.

### Luminous flux

With the averaged illuminance data at 1 m distance, taken from the graph showing the averaged radiation pattern, it is possible to compute the luminous flux. The result of this computation for this light spot is a luminous flux of 2696 Lm.

### Luminous efficacy

The luminous flux being 2696 Lm, and the power of the light bulb being 39.4 W, yields a luminous efficacy of 68 Lm/W.

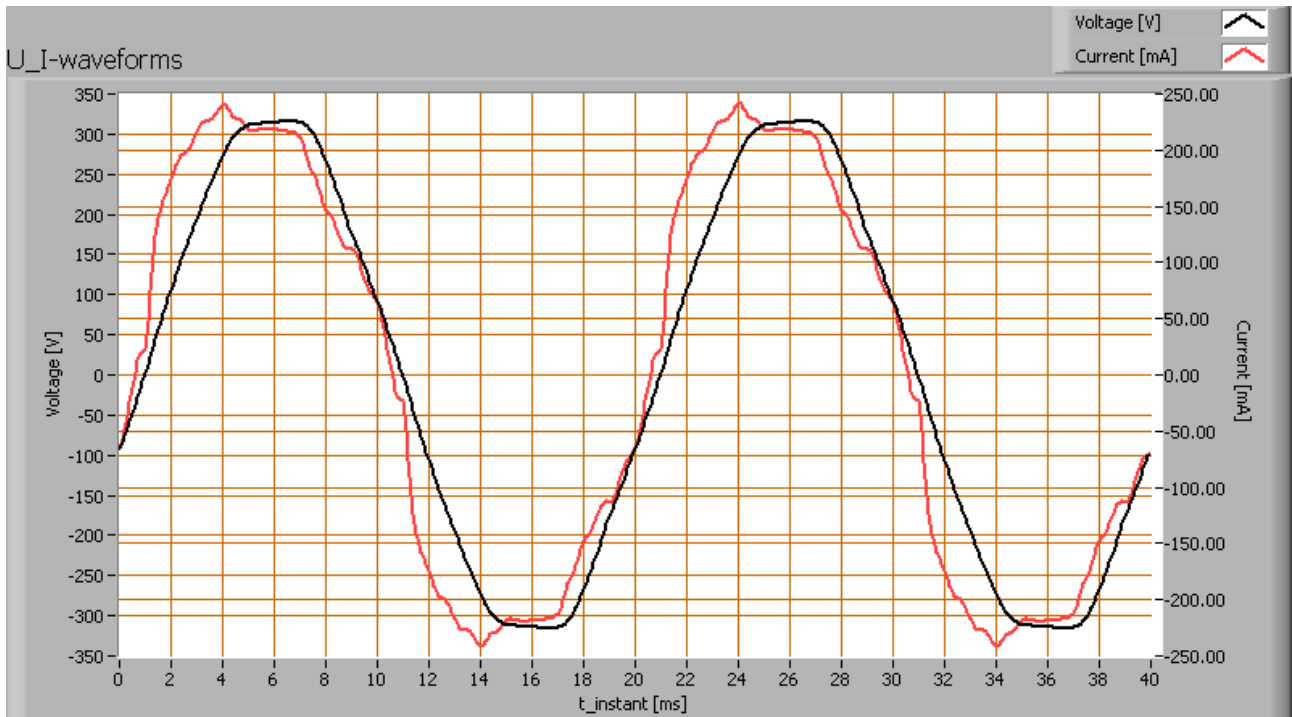
### Electrical properties

A power factor of 0.96 means that for every 1 kWh net power consumed, a reactive component of 0.3 kVAr was needed.

Lamp voltage	230 VAC
Lamp current	178 mA
Power P	39.4 W
Apparent power S	40.8 VA
Power factor	0.96

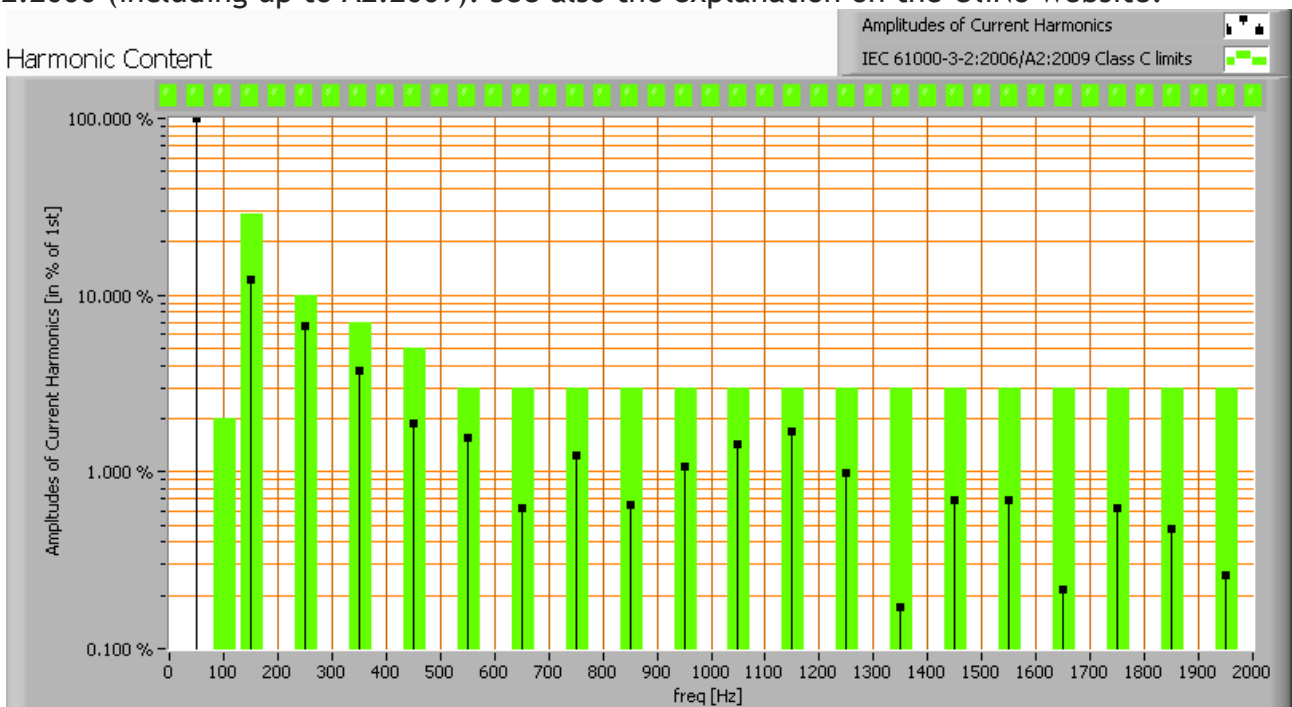
Of this light bulb the voltage across and the resulting current through it are measured and graphed. See the OliNo site how this is obtained.

## Lamp measurement report – 19 July 2010



*Voltage across and current through the lightbulb*

This waveforms have been checked on requirements posed by the norm IEC 61000-3-2:2006 (including up to A2:2009). See also the explanation on the OliNo website.



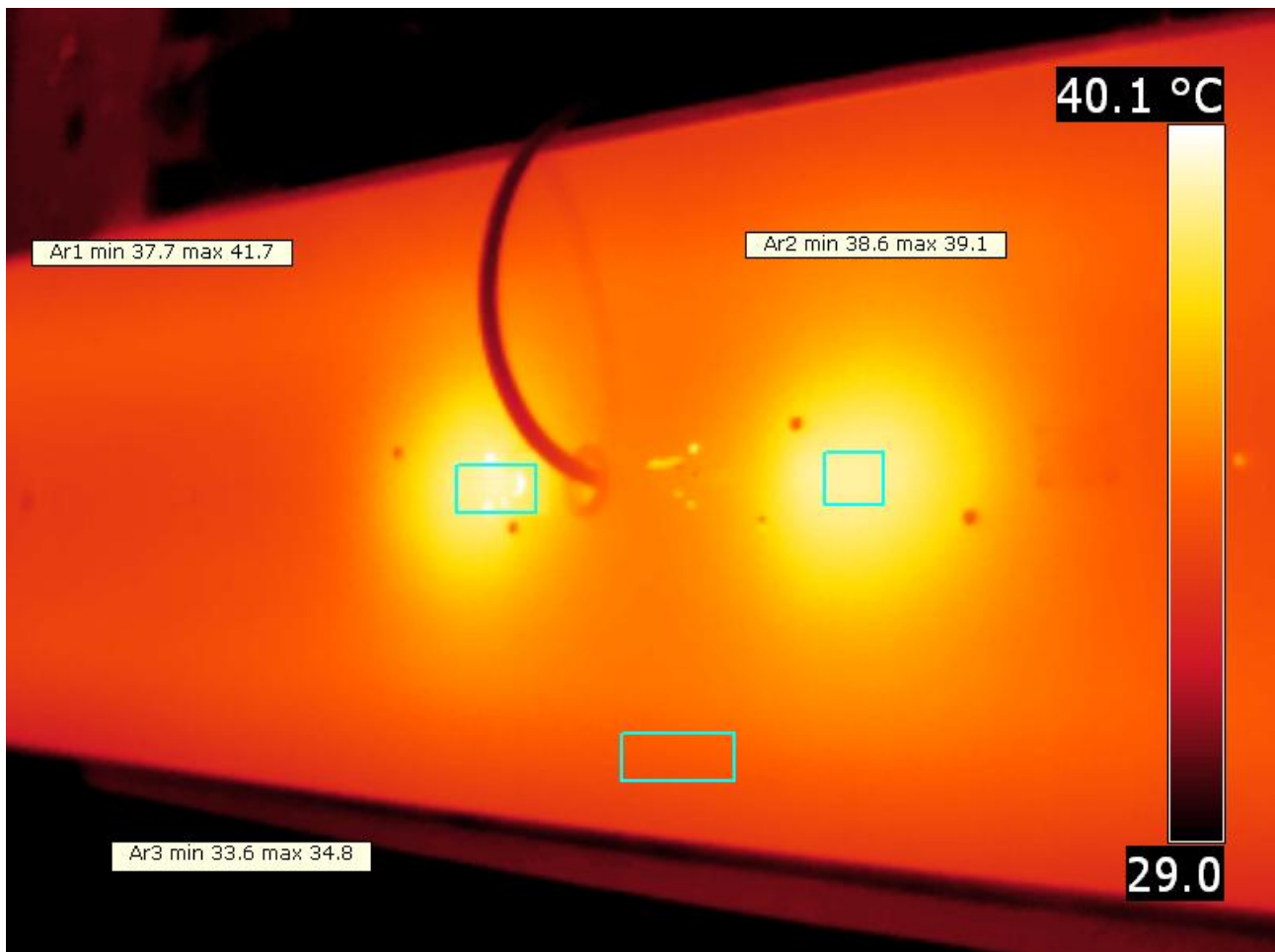


## Lamp measurement report – 19 July 2010

*Harmonics in in the current waveform and checked against IEC61000-3-2:2006*

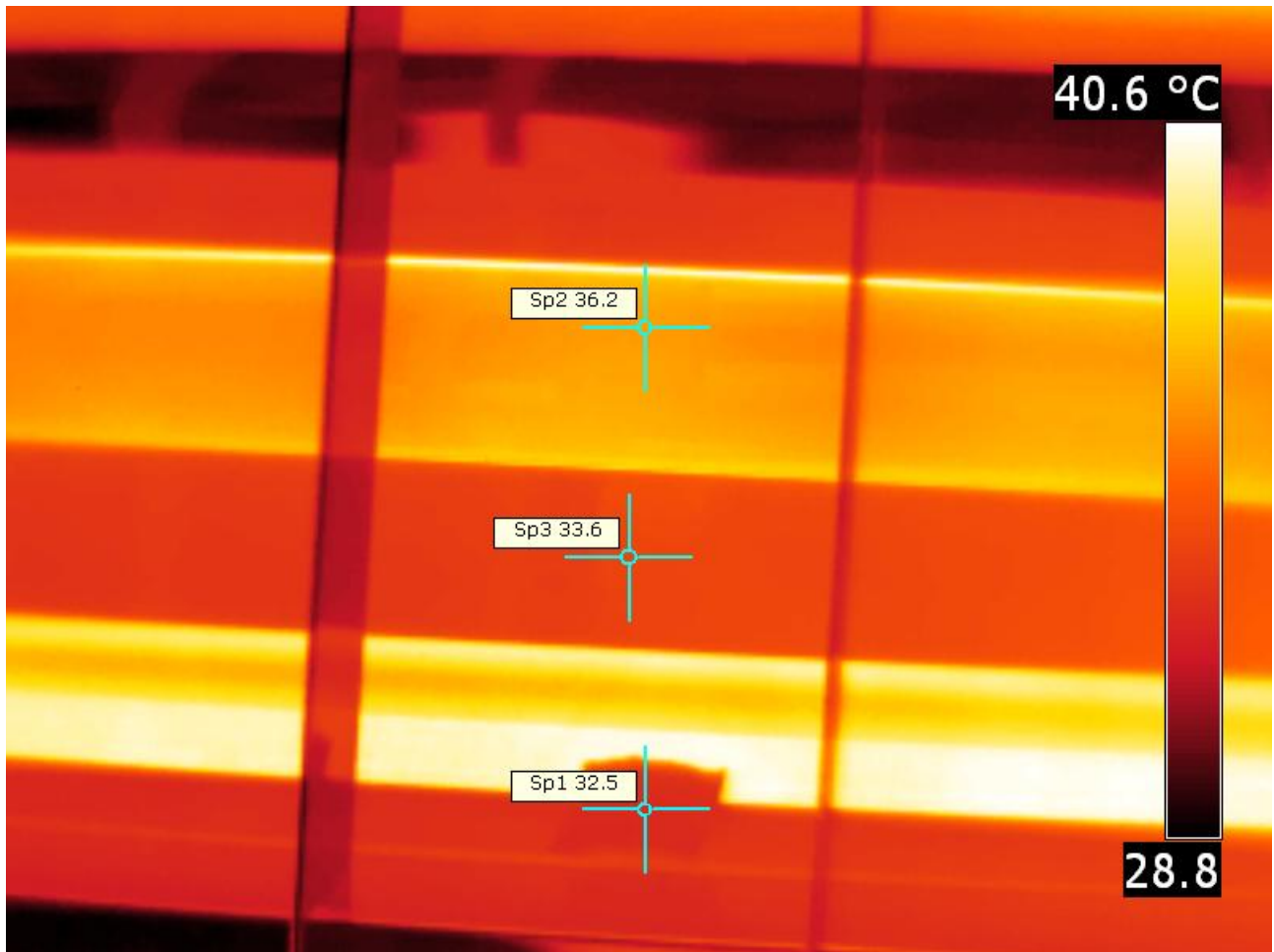
There are limits for the harmonics for lighting equipment > 25 W which are fulfilled.  
The Total Harmonic Distortion of the current is computed as 15 %.

### Temperature measurements lamp



*The place of the power supplies is well visible*

## Lamp measurement report – 19 July 2010



*The tube gets 10 degrees warmer than ambient and the reflector only a few degrees.*

For the temperature measurement a piece of masking tape is used to measure the temperature more accurately and to not be dependent from the reflections that some low emissivity materials have.

The tubes get only 10 degrees warmer than ambient temperature.

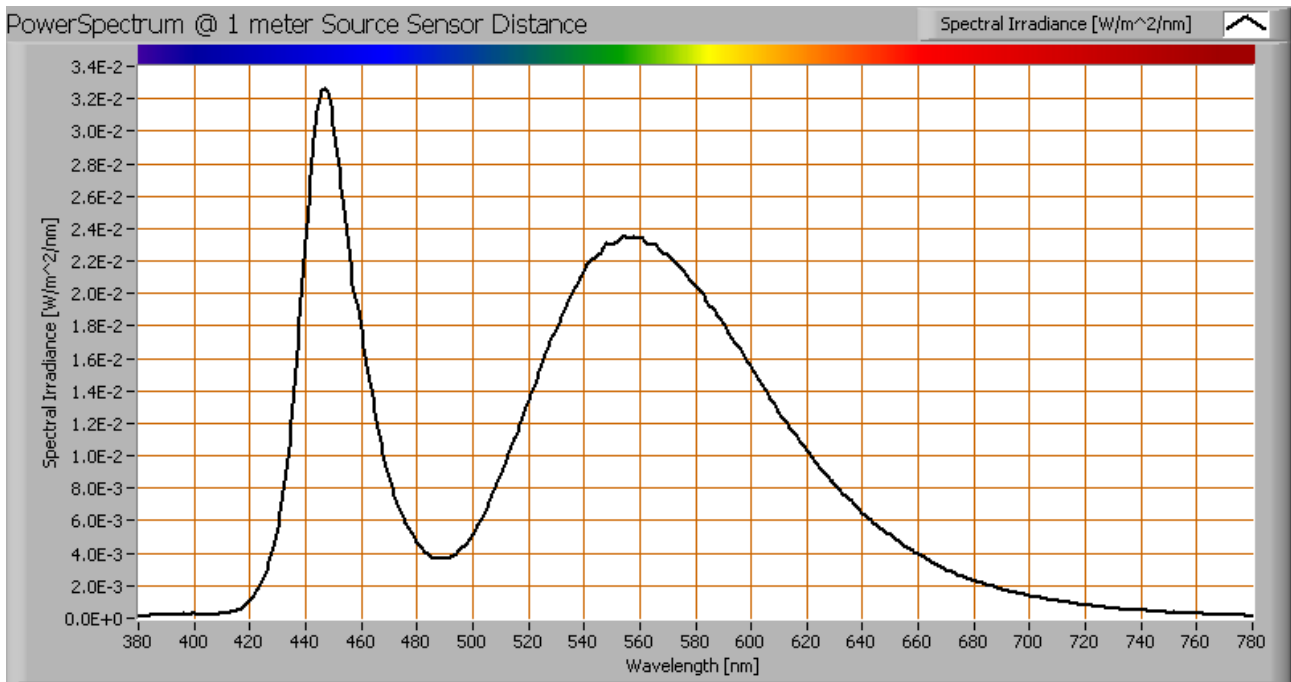
status lamp	> 2 hours on
ambient temperature	27 deg C
reflected background temperature	27 deg C
camera	Flir T335
emissivity	0.95 <sup>(1)</sup>
measurement distance	0.3 m
IFOV <sub>geometric</sub>	0.4 mm

## Lamp measurement report – 19 July 2010

NETD (thermal sensitivity)	50 mK
----------------------------	-------

<sup>(1)</sup> The outside of the luminaire has a high emissivity. The reflector hasn't for which a masking tape was used to measure accurately.

### Color temperature and Spectral power distribution

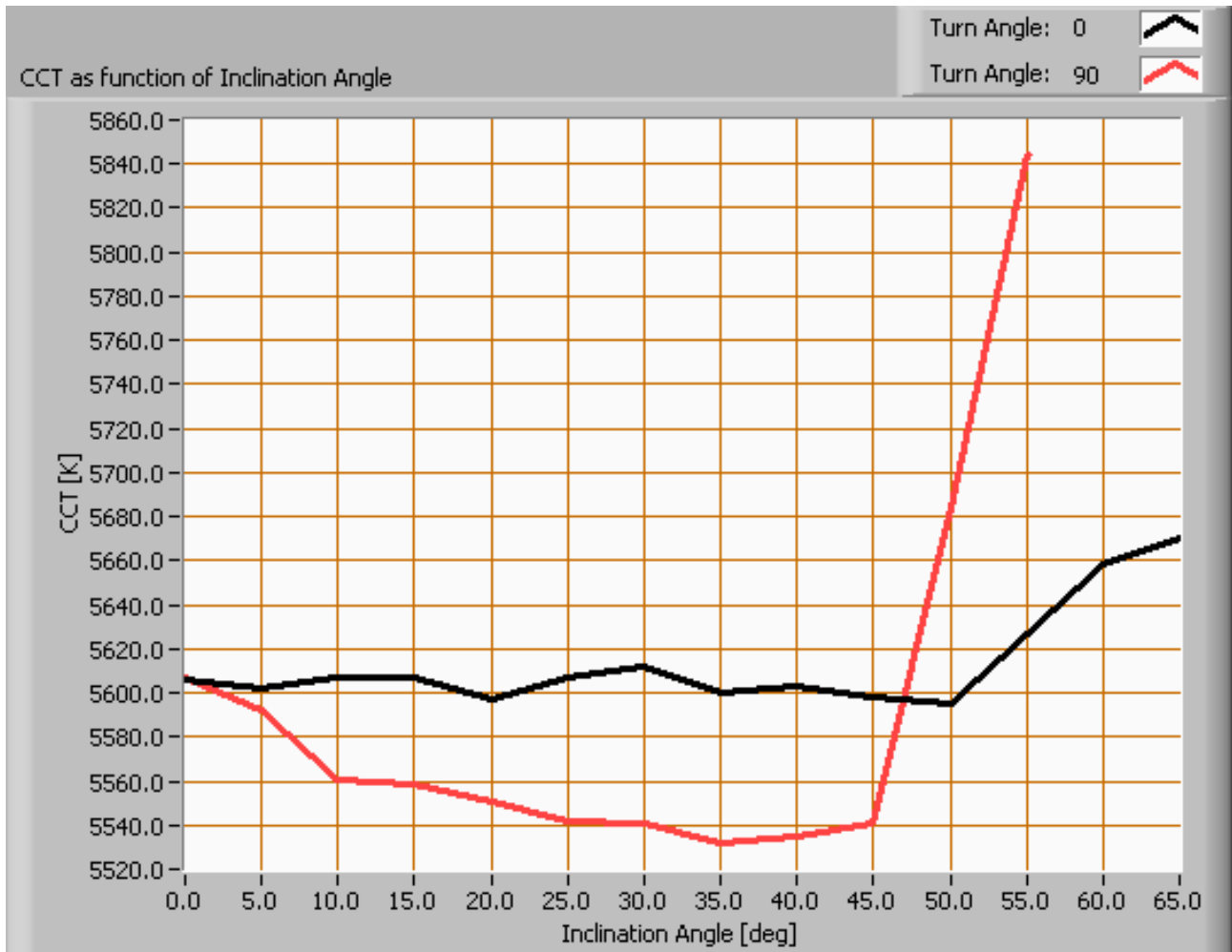


*The spectral power distribution of this light bulb, energies on y-axis valid at 1 m distance.*

The measured color temperature is about 5625 K which is cold white.

This color temperature is measured straight underneath the light bulb. Below a graph showing the color temperature for different inclination angles.

## Lamp measurement report – 19 July 2010



*Color temperature as a function of inclination angle.*

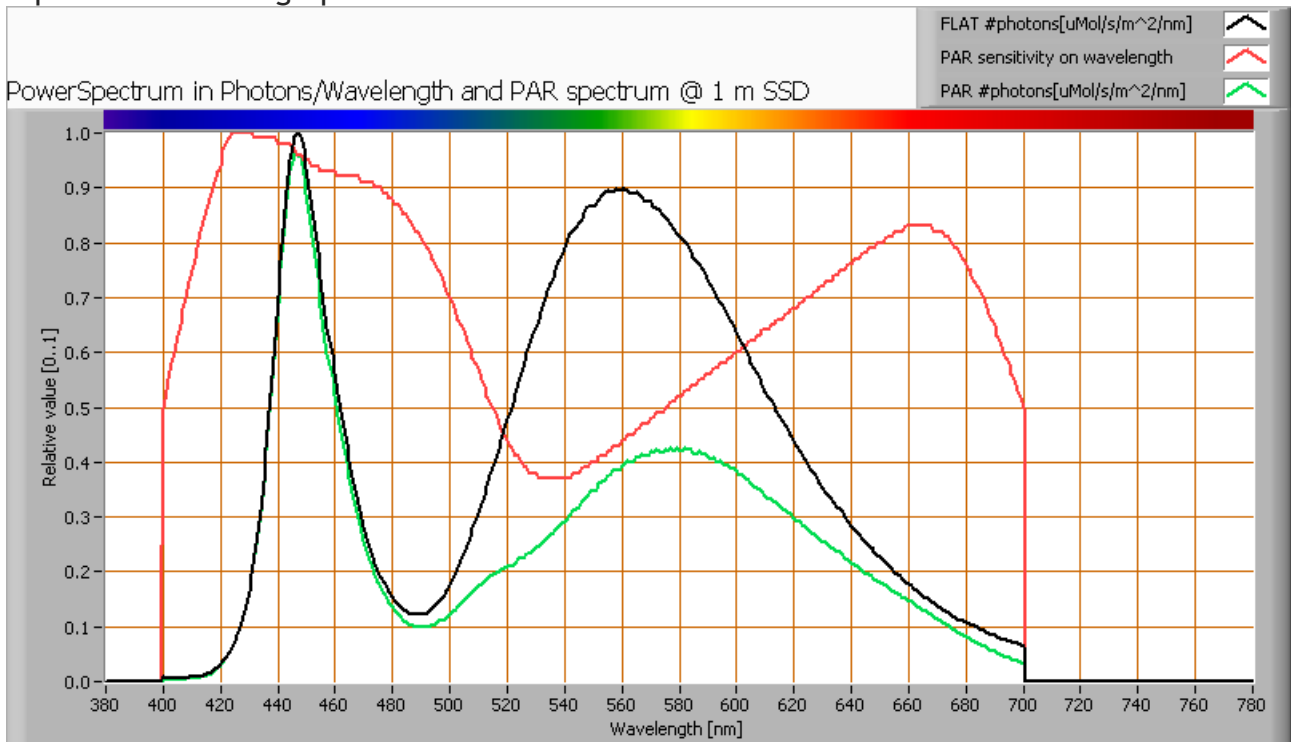
The measurement of CCT is measured for inclination angles up to 55° as beyond that angle the illuminance values are very low (< 5 lux).

The beam angle is maximally 104°, meaning a 52° inclination angle. In this area most of the light is present. The variation in correlated color temperature in this area is ≈ 2 %.

## Lamp measurement report – 19 July 2010

### PAR value and PAR spectrum

To make a statement how well the light of this light bulb is for growing plants, the PAR-area needs to be determined. See the OliNo website how this all is determined and the explanation of the graph.



*The photon spectrum, then the sensitivity curve and as result the final PAR spectrum of the light of this light bulb*

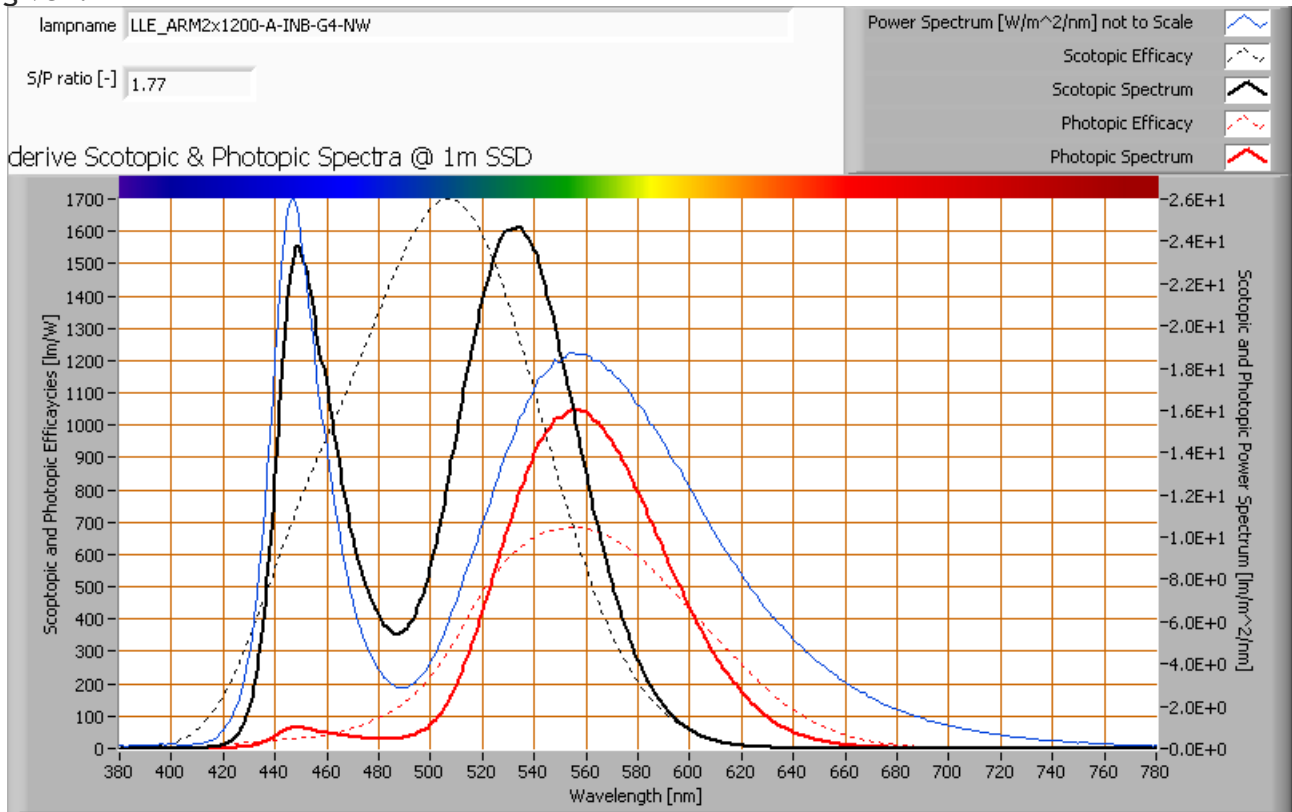
parameter	value	unit
PAR-number	9.7	$\mu\text{Mol/s/m}^2$
PAR-photon current	21.1	$\mu\text{Mol/s}$
PAR-photon efficacy	0.5	$\mu\text{Mol/s/W}$

The PAR efficiency is 63 % (valid for the PAR wave length range of 400 - 700 nm). So maximally 63 % of the total of photons in the light is effectively used by the average plant (since the plant might not take 100 % of the photons at the frequency where its relative sensitivity is 100 %).

## Lamp measurement report – 19 July 2010

### S/P ratio

The S/P ratio and measurement is explained on the OliNo website. Here the results are given.



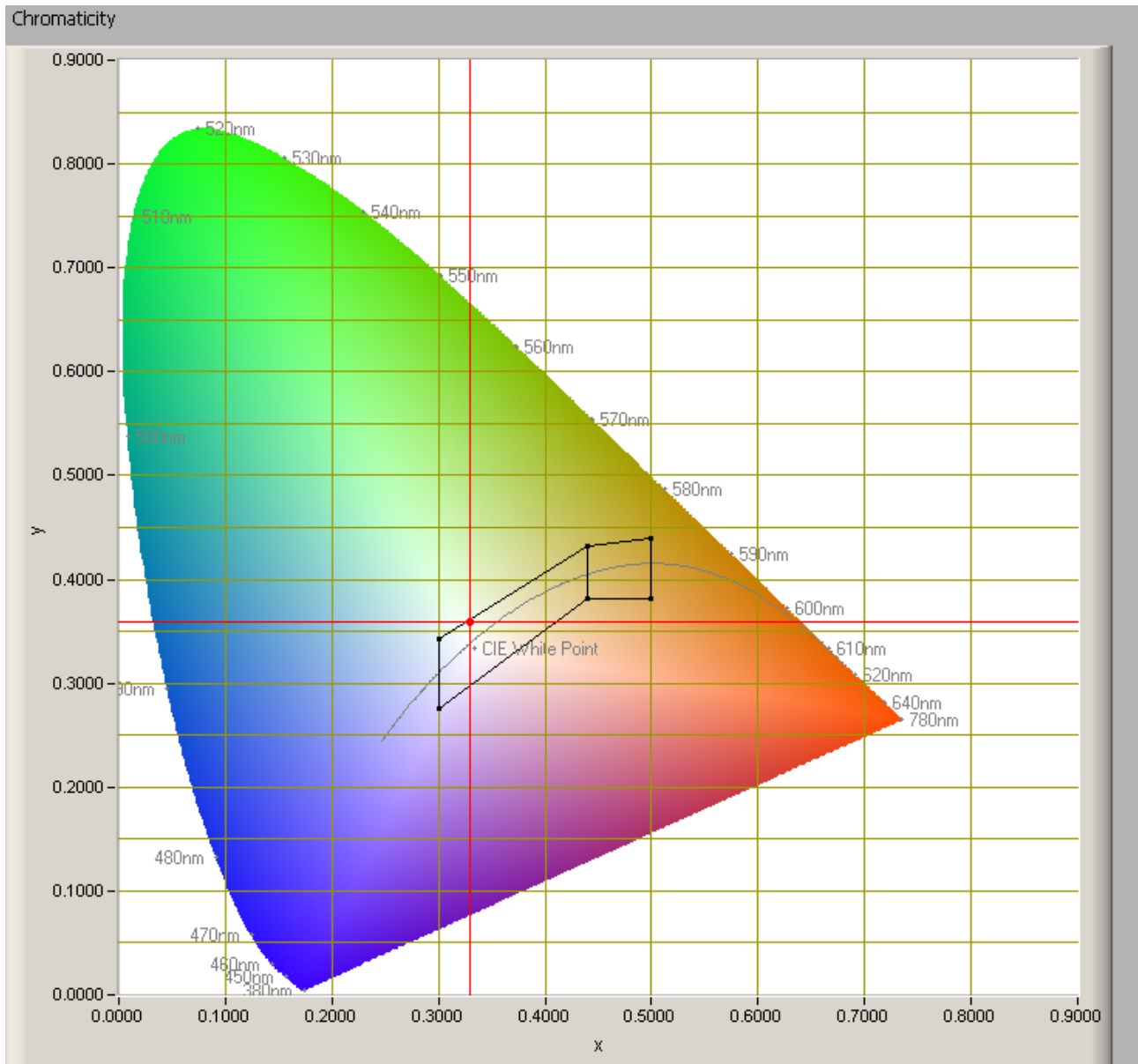
*The power spectrum, sensitivity curves and resulting scotopic and photopic spectra (spectra energy content defined at 1 m distance).*

The S/P ratio is 1.8.

More info on S/P ratio can be found on the OliNo website.

## Lamp measurement report – 19 July 2010

### Chromaticity diagram



*The chromaticity space and the position of the lamp's color coordinates in it.*

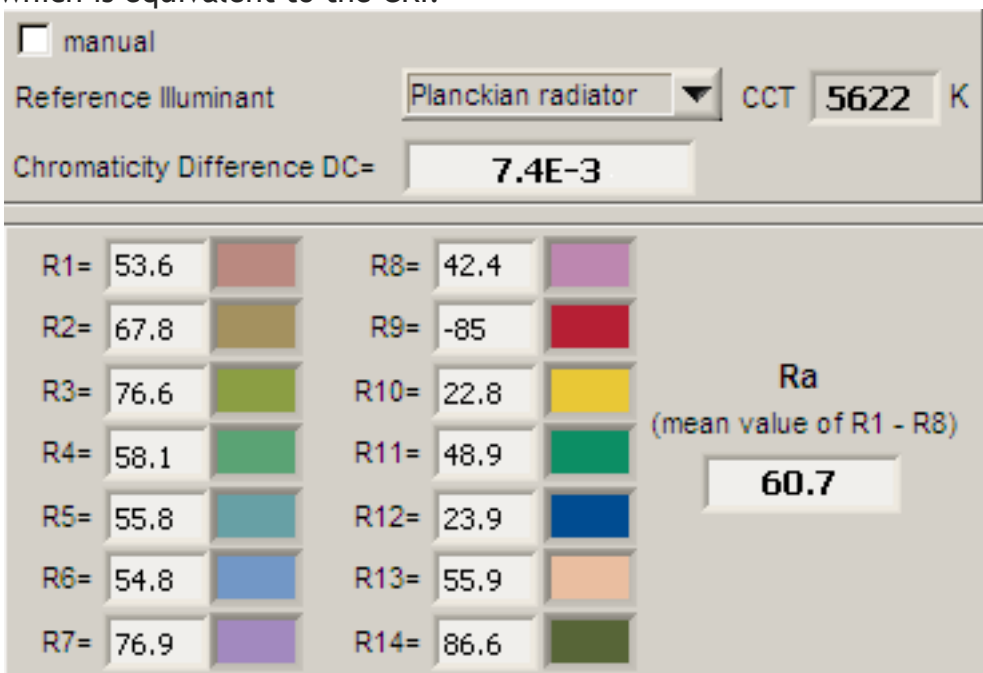
The light coming from this lamp is inside the area designated with class A. This Class A is an area that is defined for signal lamps, see also the OliNo website. Its coordinates are  $x=0.3298$  and  $y=0.3598$ .



## Lamp measurement report – 19 July 2010

### Color Rendering Index (CRI) or also Ra

Herewith the image showing the CRI as well as how well different colors are represented (rendered). The higher the number, the better the resemblance with the color when a black body radiator would have been used (the sun, or an incandescent lamp). Practical information and also some critics about the CRI can be found on the OliNo website. Each color has an index  $R_x$ , and the first 8 indexes ( $R_1 \dots R_8$ ) are averaged to compute the  $R_a$  which is equivalent to the CRI.



*CRI of the light of this lightbulb.*

The value of 61 is lower than 80 which is considered a minimum value for indoor usage. Note: the chromaticity difference is 0.0074 indicates the distance to the Planckian Locus. There is no norm yet that states what the max deviation from white light is allowed to be. A reference with signal lights as a reference is given in the chromaticity diagram.

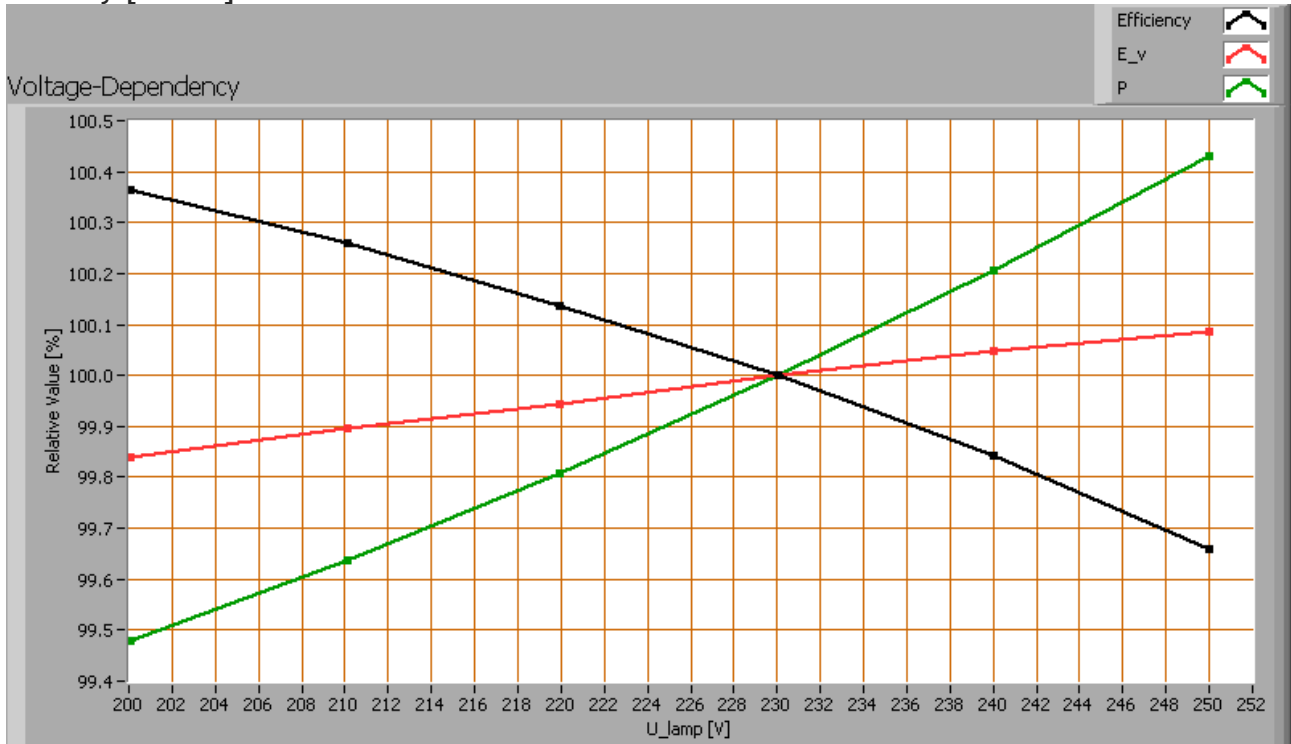
### Voltage dependency

The dependency of a number of lamp parameters on the lamp voltage is determined. For this, the lamp voltage has been varied and its effect on the following light bulb parameters measured: illuminance  $E_v$  [lx], the lamp power  $P$  [W] and the luminous



## Lamp measurement report – 19 July 2010

efficacy [lm/W].



Lamp voltage dependencies of certain light bulb parameters, where the value at 230 V is taken as 100 %.

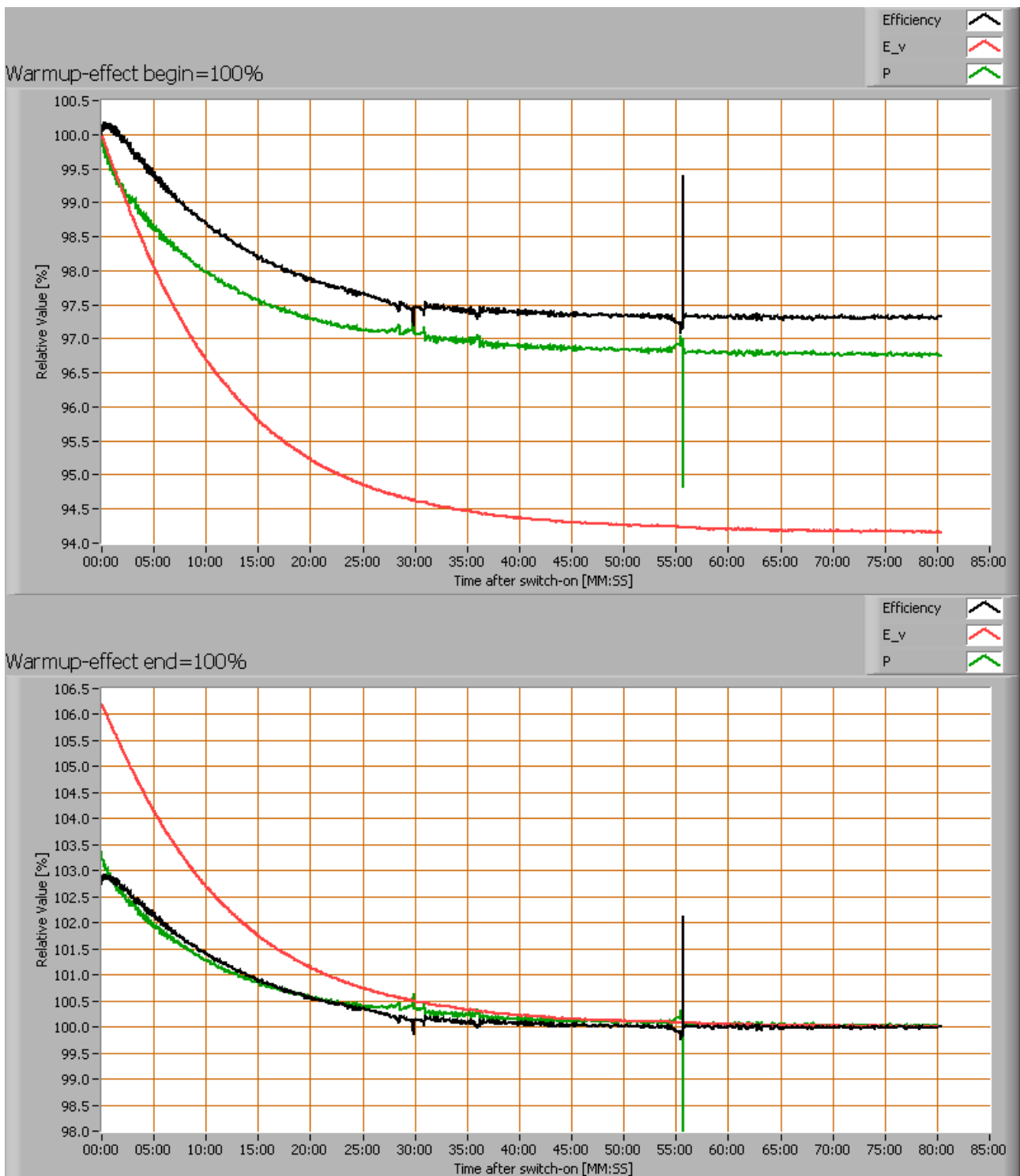
The illuminance and consumed power do not vary significantly when the voltage is varied.

When the voltage at 230 V varies with + and - 5 V, then the illuminance varies < 0.1 %, so when abrupt voltage changes occur this effect is not visible in the illuminance output.

### Warm up effects

After switch on of a cold lamp, the effect of heating up of the lamp is measured on illuminance E<sub>v</sub> [lx], the lamp power P [W] and the luminous efficacy [lm/W].

## Lamp measurement report – 19 July 2010



*Effect of warming up on different light bulb parameters. At top the 100 % level is put at begin, and at bottom at the end.*

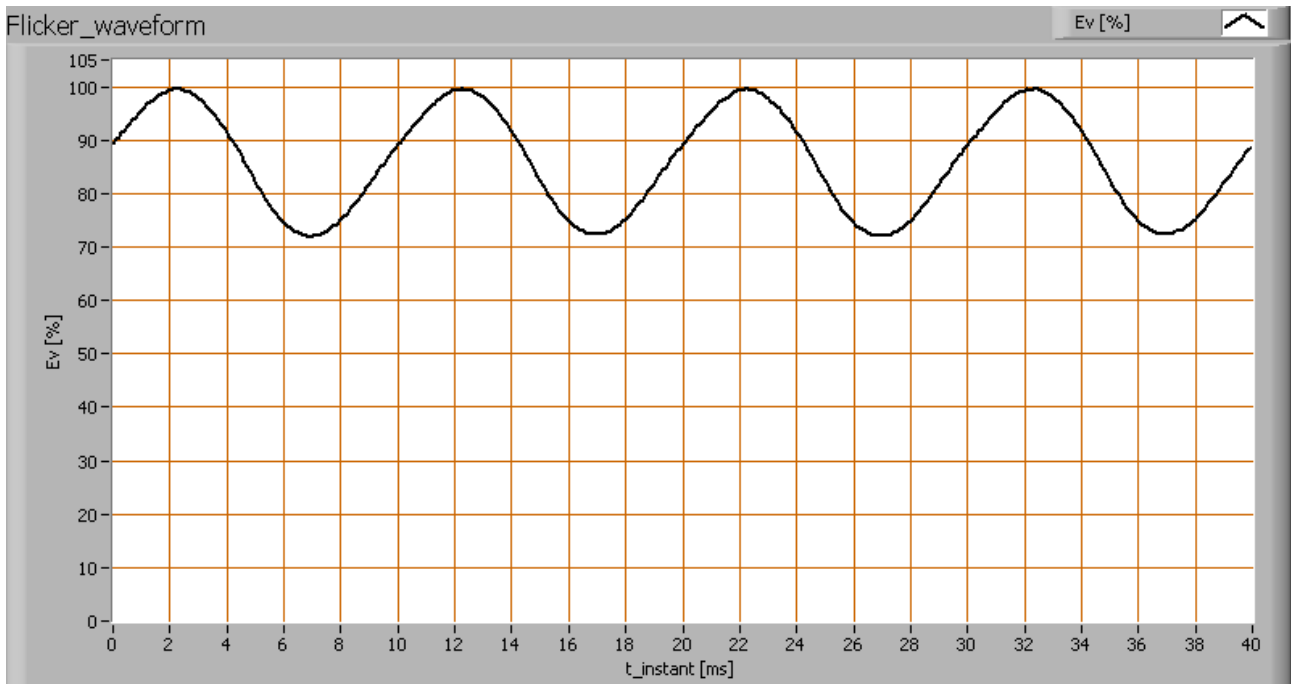


## Lamp measurement report – 19 July 2010

The warm up time is about 30 minutes. During that time the the illuminance decreases with about 6 %.

### Measure of flickering

An analysis is done on the measure of flickering of the light output by this light bulb. See the OliNo site for more information.



*The measure of fast illuminance variation of the light of the light bulb*

parameter	waarde	eenheid
Flicker frequency	100.0	Hz
Illuminance modulation index	16	%

The illuminance modulation index is computed as:  $(\max_{Ev} - \min_{Ev}) / (\max_{Ev} + \min_{Ev})$ .

## Lamp measurement report – 19 July 2010

### Additional photo



*The total luminaire with the two tubes in it.*

### **Disclaimer**

The information in this OliNo report is created with the utmost care. Despite this, the information could contain inaccuracies. OliNo cannot be held liable in this instance nor can the data in this report be legally binding.

### **License**

It is permitted ONLY to use or publish this report in its entirety and in unaltered form via internet or other digital or written media in any form. To guarantee the reliability and accuracy of the report, it is strictly prohibited to change or alter parts of the report and/or republish it in a modified content.