

Lamp measurement report – 23 March 2011

Pharox MR16

by

Lemnis



Photo courtesy by www.OliNo.org

Lamp measurement report – 23 March 2011

Summary measurement data

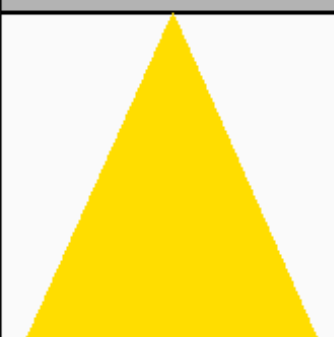
parameter	meas. result	remark
Color temperature	3099 K	warm white (max, min: 3127, 3059)
Luminous intensity I_v	428.5 Cd	Measured straight underneath the lamp (max, min: 447.7, 417.2).
Illuminance modulation index	0 %	Measured with a light sensor looking at the lamp (angle not defined). Is a measure for the amount of flickering.
Beam angle	37 deg	37 deg is the beam angle for all C-planes since the lamp is symmetrical along its 1st axis.
Power P	4.6 W	Follow the link for more information on electrical properties (max, min: 4.8, 4.4).
Power Factor	1.00	The tests were done with a DC power supply. This results in no blind power and as a result the power factor is always 1.0 but not relevant to mention.
THD	NaN %	Total Harmonic Distortion, is not present as a DC voltage was used to power the lamp so a DC current resulted which has no THD.
Luminous flux	288 lm	max, min: 296, 282.
Luminous efficacy	63 lm/W	Be aware that a DC power supply has been used. The found efficacy with this measurement is excluding the power supply that normally is needed to convert the grid voltage (230 V AC) to the used DC voltage. By excluding the consumption of the power supply the efficacy found here is higher than it would be when the power supply had been included. Max and min value: 65, 61.
EU-label classification	A	The energy class, from A (more efficient) to G (least efficient).
CRI_Ra	89	Color Rendering Index.
Coordinates chromaticity diagram	x=0.4354 en y=0.4133	x_max, x_min = 0.4387, 0.4318. y_max, y_min = 0.4165, 0.4086.

Lamp measurement report – 23 March 2011

Fitting	GU5.3/MR16	This lamp has been tested on a 12.0 V DC voltage.
PAR-value	3.6 $\mu\text{Mol/s/m}^2$	The number of photons seen by an average plant when it is lit by the light of this light bulb. Value valid at 1 m distance from light bulb. Max, min: 3.8, 3.4.
PAR-photon efficacy	0.5 $\mu\text{Mol/s/W}_e$	The total emitted number of photons by this light, divided by its consumption in W. It indicates a kind of efficacy in generating photons.
S/P ratio	1.3	This factor indicates the amount of times more efficient the light of this light bulb is perceived under scotopic circumstances (low environmental light level).
D x H external dimensions	50 mm x 38 mm	External dimensions of the lamp.
D luminous area	34 mm	Dimensions of the luminous area (used in Eulumdat file). This is the surface of the matte semi-transparent front cover of the leds.
General remarks		<p>The ambient temperature during the whole set of illuminance measurements was 23.4 - 24.9 deg C.</p> <p>The temperature of the housing gets maximally about 40 degrees hotter than ambient temperature.</p> <p>Warm up effect: During the warmup time the illuminance varies during 13 minutes and decreases with 13 %. During the warmup time the power varies during 23 minutes and decreases with 6 %.</p> <p>Voltage dependency: There is a non-constant dependency of the illuminance when the power voltage varies between 11 - 13 V DC. There is a non-constant dependency of the consumed power when the power voltage varies between 11 - 13 V DC.</p> <p>At the end of the article an additional photo.</p>

Lamp measurement report – 23 March 2011

Overview table

m.	Ø 50%		C0-180: 37° C90-270: 37°	E (lux)	Luminaire Efficacy
	C0-180	C90-270			65 (lumen per Watt)
0.25	0.17	0.17		7163	Half-peak diam C0-180
0.5	0.33	0.33		1791	0.67 x diameter(m)
1	0.67	0.67		448	0.67 x diameter(m)
1.5	1	1		199	Illuminance
3	2.01	2.01		50	448 / distance ² (lux)
4	2.67	2.67		28	Total Output
5	3.34	3.34		18	296 (lumen)

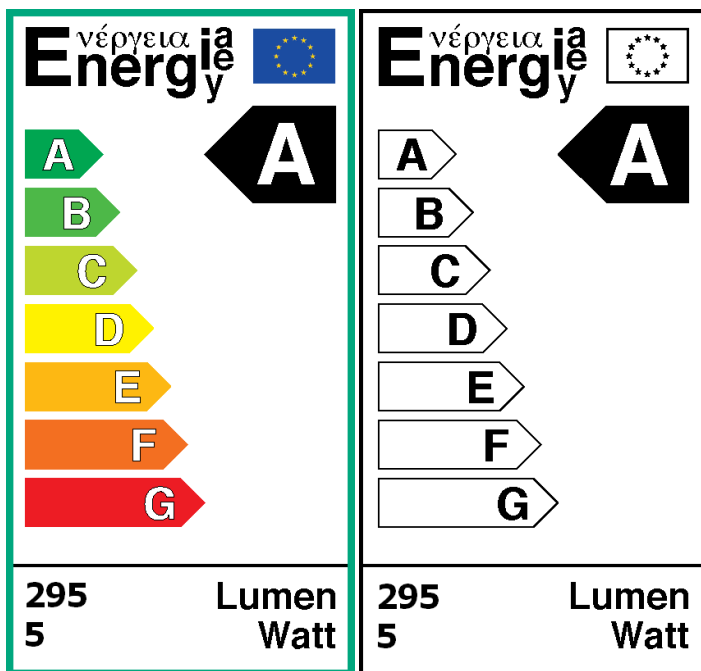
The overview table is explained on the OLiNo website.

Please note that this overview table makes use of calculations, use this data with care as explained on the OLiNo site. E (lux) values are not accurate, when within 5 x 34 mm (maximal luminous size, eventually diagonally measured)= 170 mm. Within this distance from the lamp, the measured lux values will be less than the computed values in this overview as the measurements are then within the near field of the lamp.

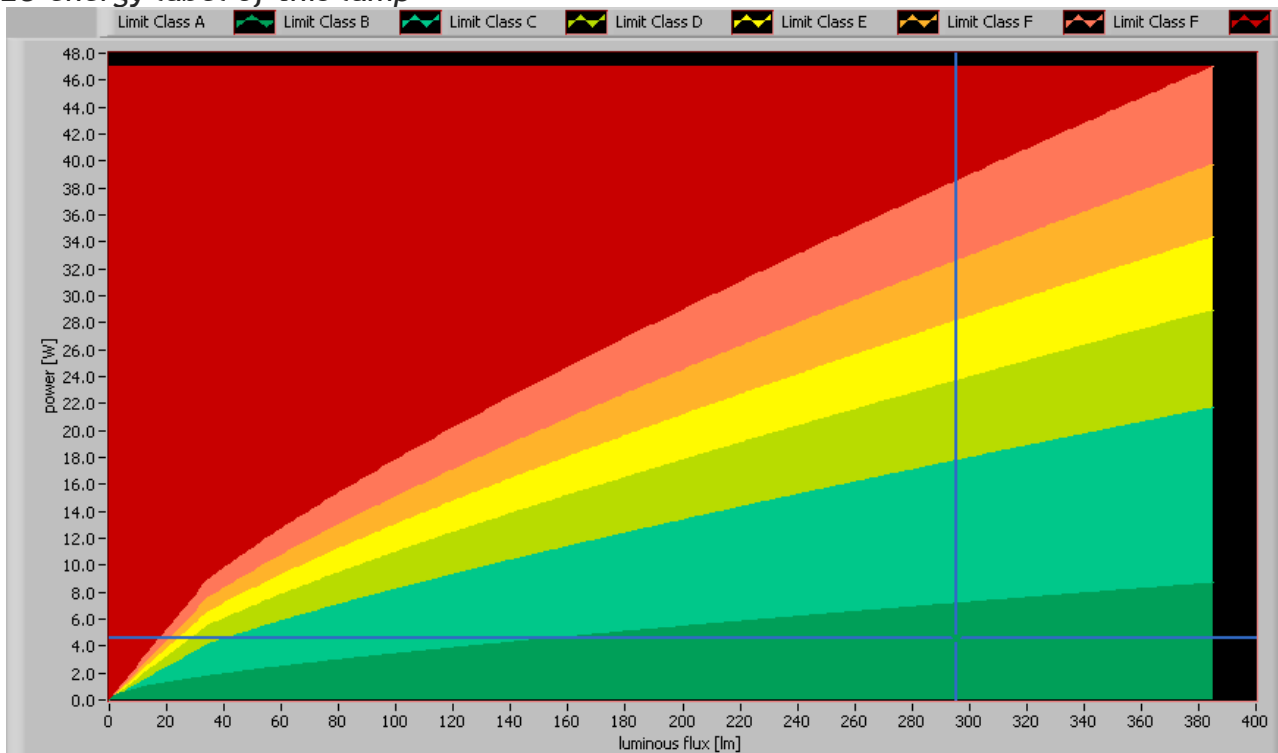
EU Energy label classification

With the measurement results of the luminous flux and the consumed power the classification on energy efficacy of this lamp is calculated. This information is requested in the EU for certain household lamps, see also the OLiNo site that explains for which lamps it is requested, how the label looks like and what information it needs to contain. Herewith the labels for this lamp in color and black and white.

Lamp measurement report – 23 March 2011



EU energy label of this lamp

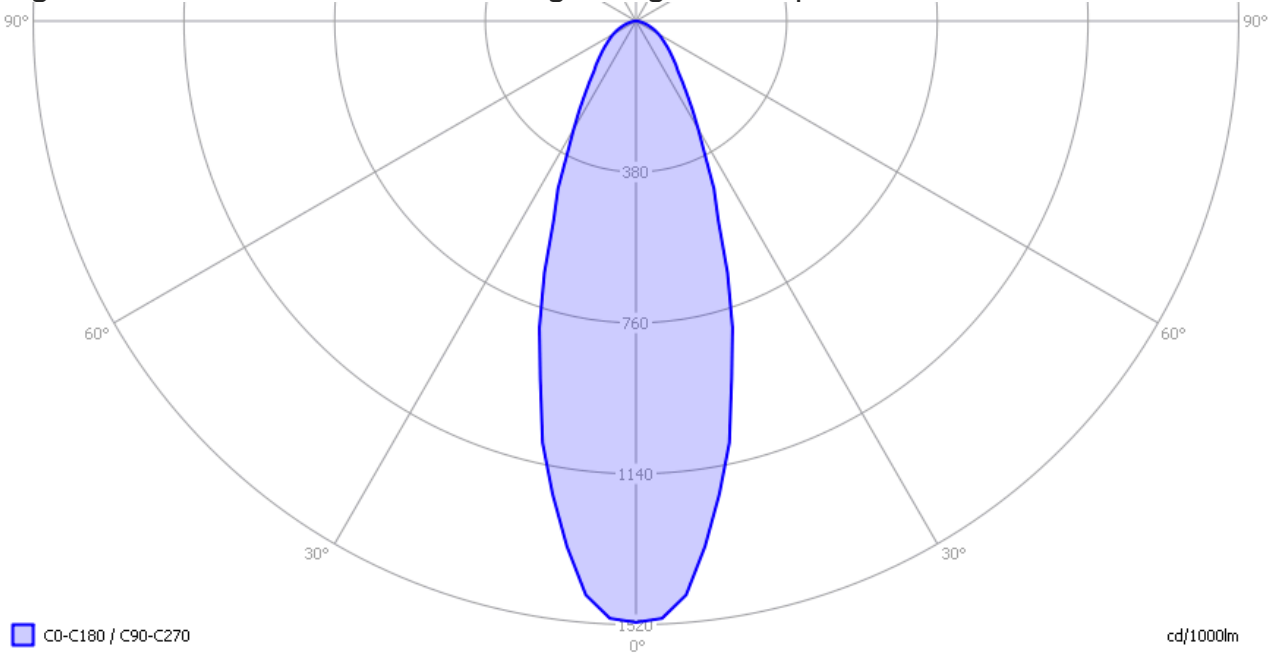


The lamp's performance in the lumen-Watt field, with the energy efficacy fields indicated.

Lamp measurement report – 23 March 2011

Eulumdat light diagram

This light diagram below comes from the program Qlumedit, that extracts these diagrams from an Eulumdat file. This light diagram is explained on the OliNo site.



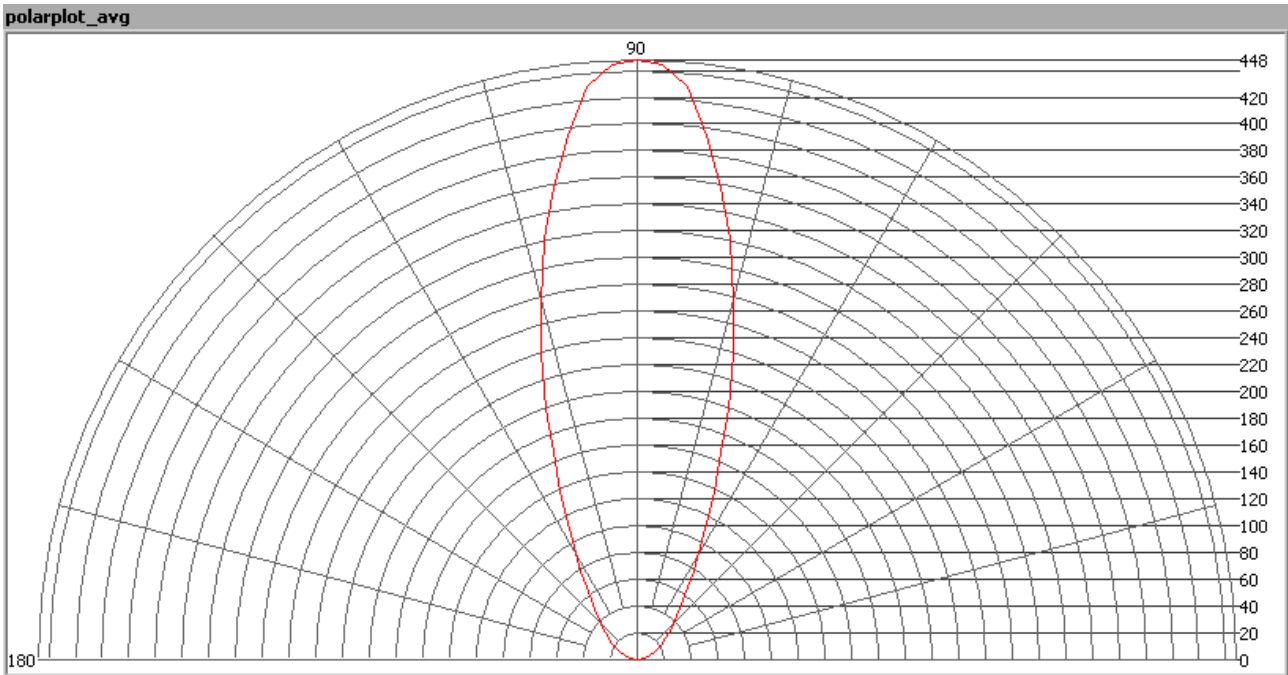
The light diagram giving the radiation pattern.

The light diagram indicates the beam in the C0-C180 plane and in the plane perpendicular to that, the C90-C270 plane. These beams are equal as the lamp has symmetry over its first axis (the vertical axis).

Illuminance E_v at 1 m distance, or luminous intensity I_v

Herewith the plot of the *averaged* luminous intensity I_v as a function of the inclination angle with the light bulb.

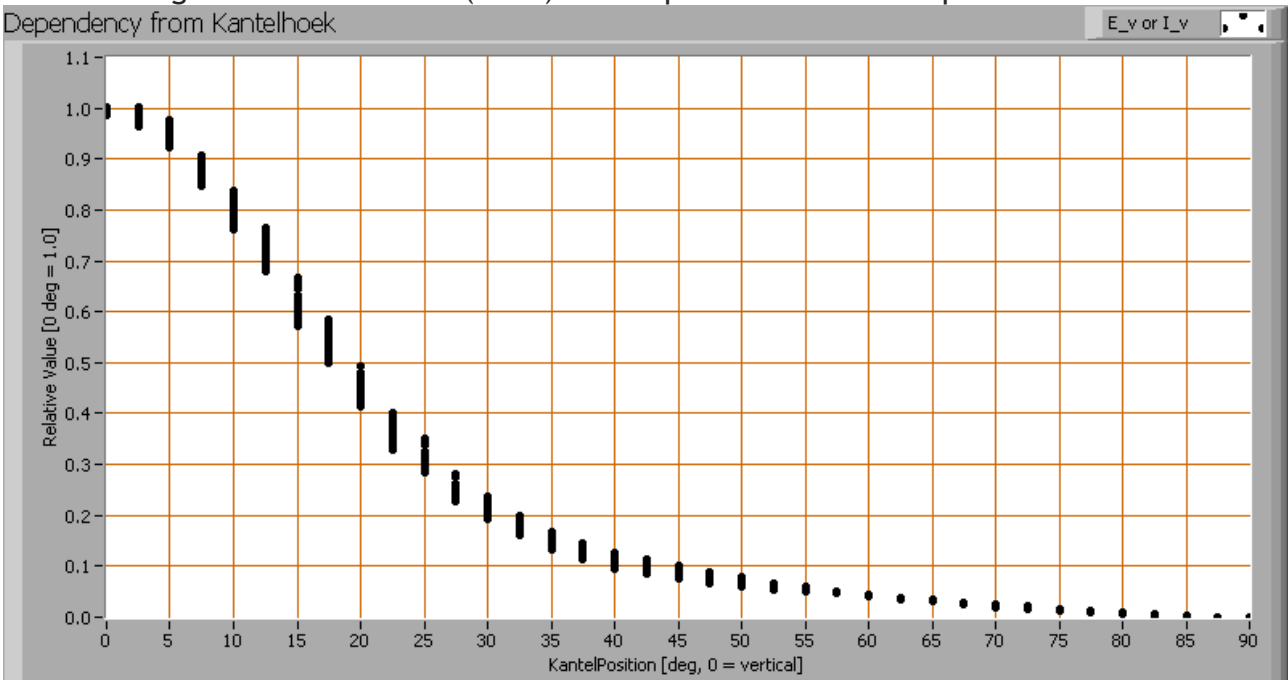
Lamp measurement report – 23 March 2011



The radiation pattern of the light bulb.

This radiation pattern is the average of the light output of the light diagram given earlier. Also, in this graph the luminous intensity is given in Cd.

These averaged values are used (later) to compute the lumen output.



Intensity data of every measured turn angle at each inclination angle.

Lamp measurement report – 23 March 2011

This plot shows per inclination angle the intensity measurement results for each turn angle at that inclination angle. There normally are differences in illuminance values for different turn angles. However for further calculations the averaged values will be used. When using the average values per inclination angle, the beam angle can be computed, being 37 deg for the C0-C180 plane and 37 deg for the C90-C270 plane.

Luminous flux

With the averaged illuminance data at 1 m distance, taken from the graph showing the averaged radiation pattern, it is possible to compute the luminous flux.

The result of this computation for this light spot is a luminous flux of 288 lm.

Luminous efficacy

The luminous flux being 288 lm, and the consumed power of the lamp being 4.7 Watt, results in a luminous efficacy of 63 lm/Watt.

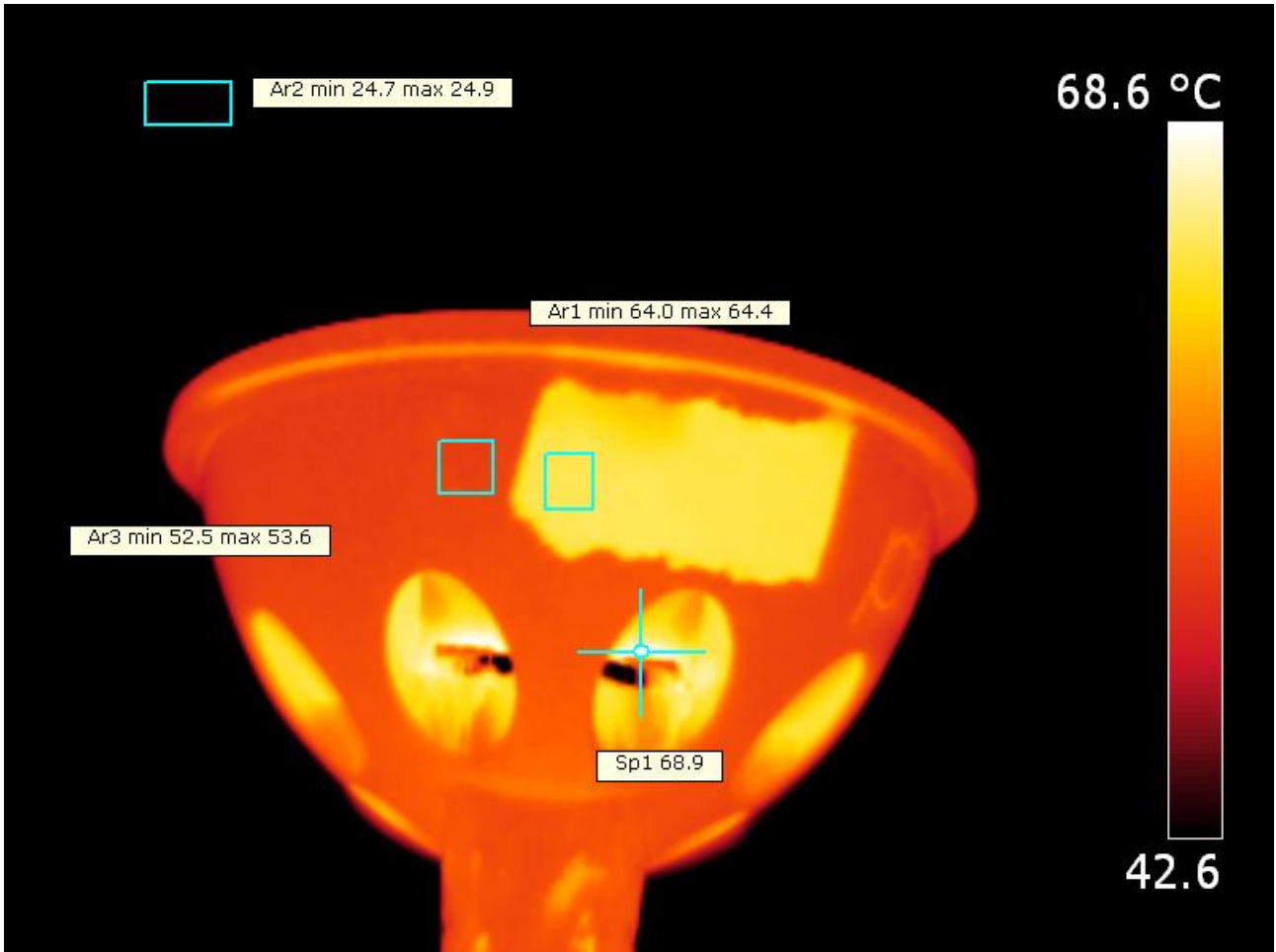
Electrical properties

The power factor is 1.00. The tests were done with a DC power supply. This results in no blind power and as a result the power factor is always 1.0 but not relevant to mention.

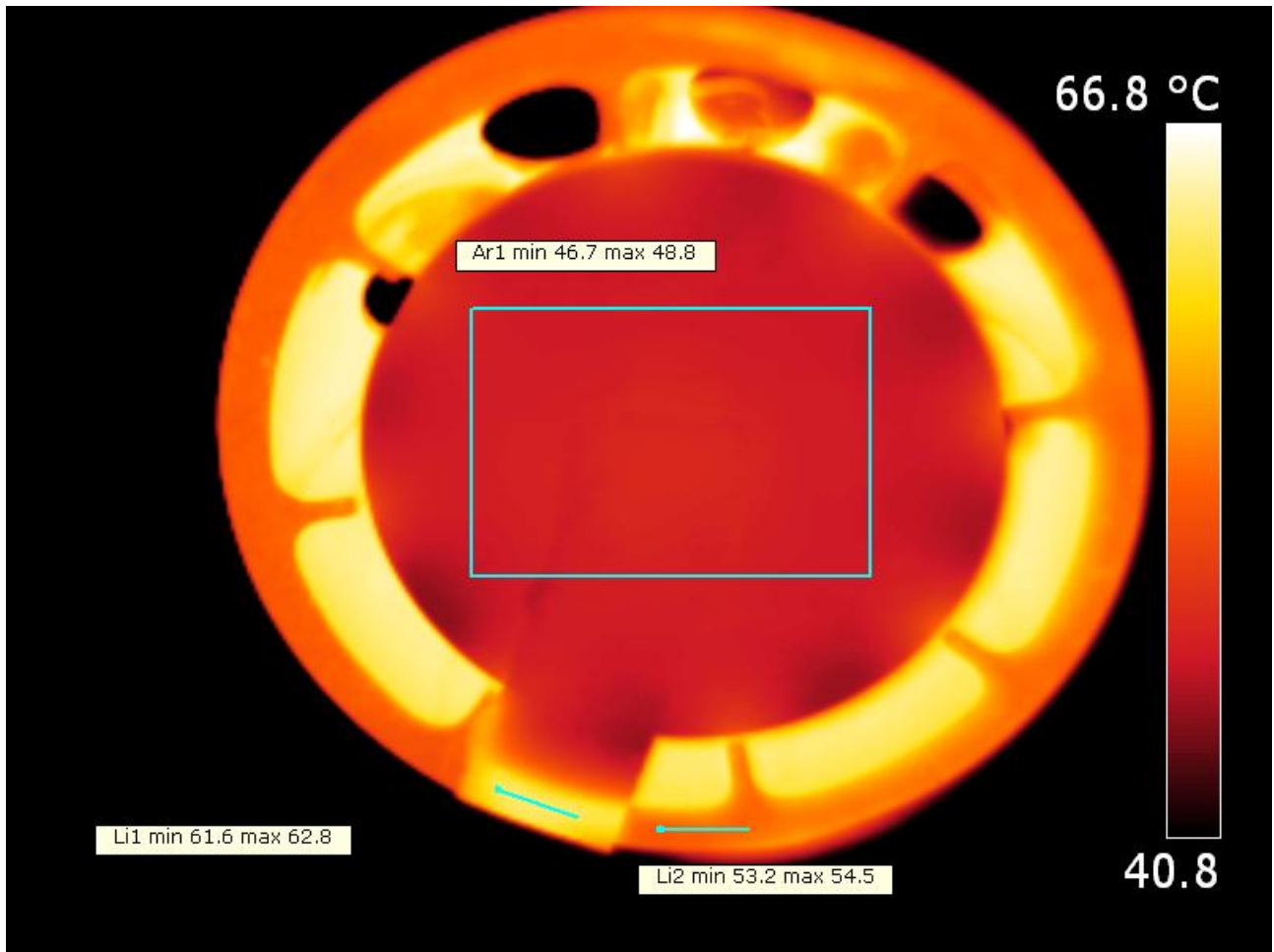
Lamp voltage	12.0 V
Lamp current	0.38 A
Power P	4.6 W
Apparent power S	4.6 VA
Power factor	1.00

Lamp measurement report – 23 March 2011

Temperature measurements lamp



Lamp measurement report – 23 March 2011



Temperature images.

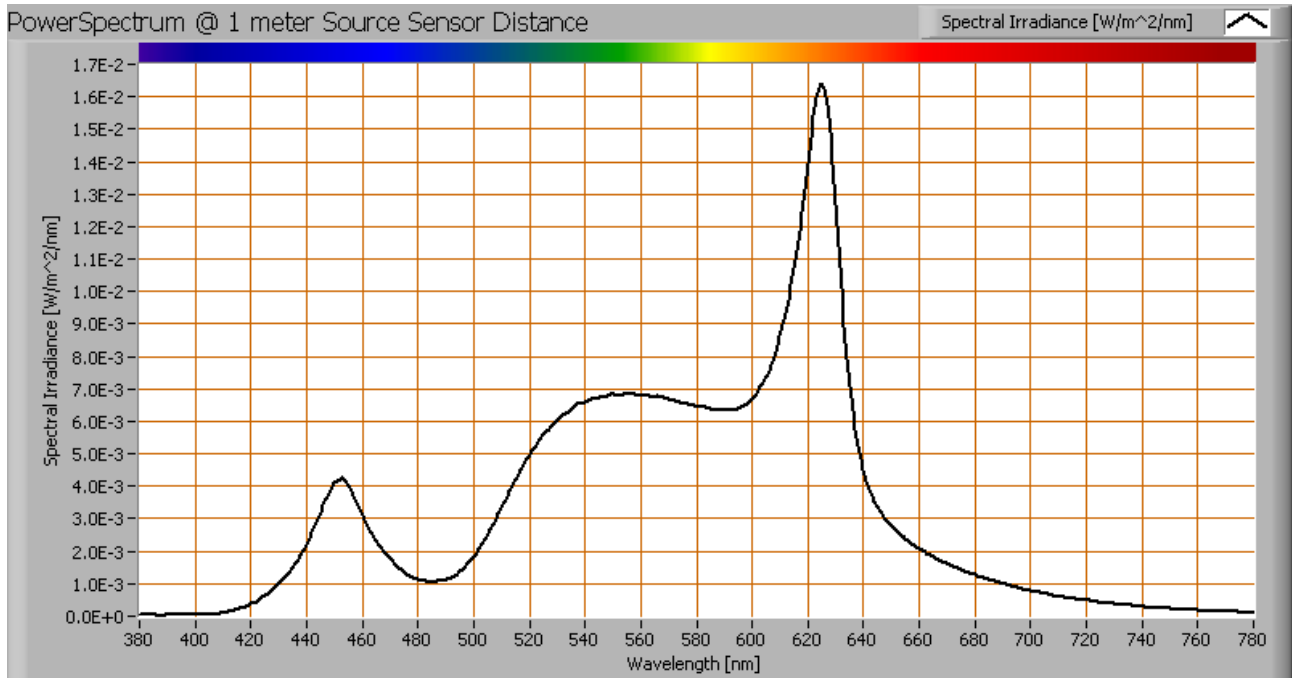
The emissivity of the used aluminum is between 0.65 - 0.70.

The measurement on the chip shows 70 deg C. The emissivity here is taken to be 0.95.

status lamp	> 2 hours on
ambient temperature	25 deg C
reflected background temperature	25 deg C
camera	Flir T335
emissivity	0.68, 0.95
measurement distance	0.2 m
IFOV _{geometric}	0.136 mm per 0.1 m distance
NETD (thermal sensitivity)	50 mK

Lamp measurement report – 23 March 2011

Color temperature and Spectral power distribution

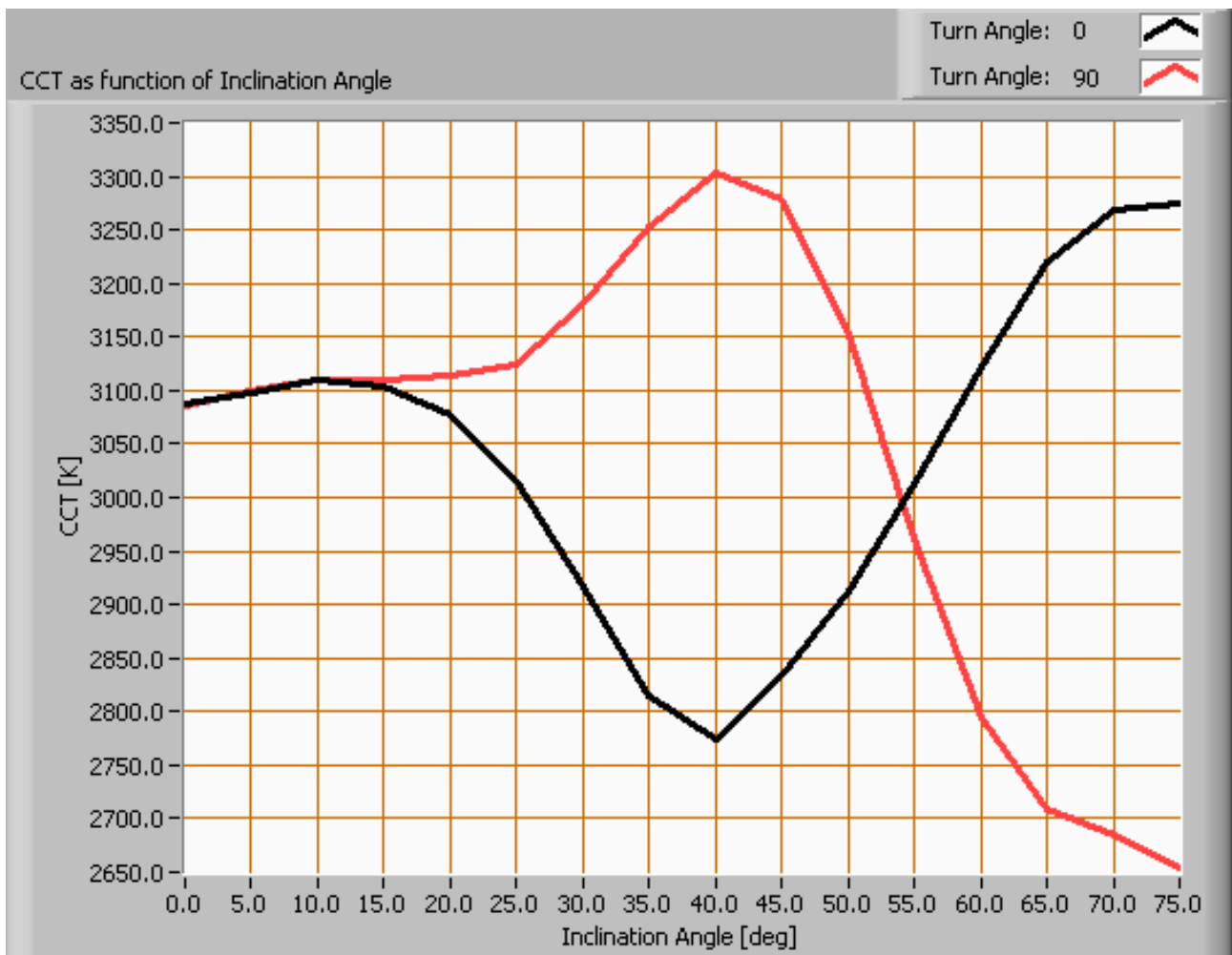


The spectral power distribution of this light bulb, energies on y-axis valid at 1 m distance.

The measured color temperature is 3099 K which is warm white.

This color temperature is measured straight underneath the light bulb. Below a graph showing the color temperature for different inclination angles.

Lamp measurement report – 23 March 2011



Color temperature as a function of inclination angle.

The color temperature is given for inclination angles up to 70 deg. Beyond that value the illuminance is so low (< 5 lux) that it has not been used for color determination of the light.

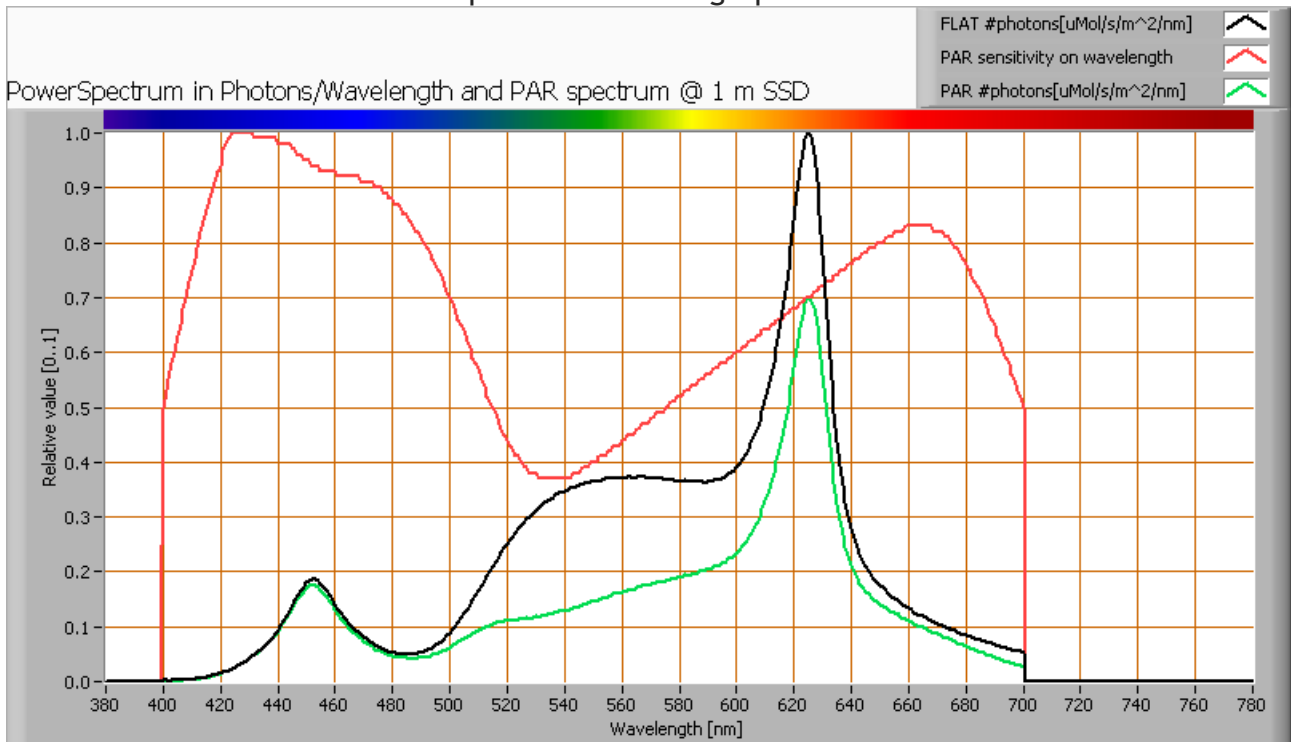
For the C0-C180 plane: the beam angle of 37 deg is equivalent to 18.5 deg inclination angle, which is the area where most of the light falls within. The maximum variation of color temperature in this inclination area is about 1 %.

For the C90-C270 plane: the beam angle of 37 deg is equivalent to 18.5 deg inclination angle, which is the area where most of the light falls within. The maximum variation of color temperature in this inclination area is about 1 %.

Lamp measurement report – 23 March 2011

PAR value and PAR spectrum

To make a statement how well the light of this light bulb is for growing plants, the PAR-area needs to be determined. See the explanation about PAR on the OliNo website how this all is determined and the explanation of the graph.



The photon spectrum, then the sensitivity curve and as result the final PAR spectrum of the light of this light bulb

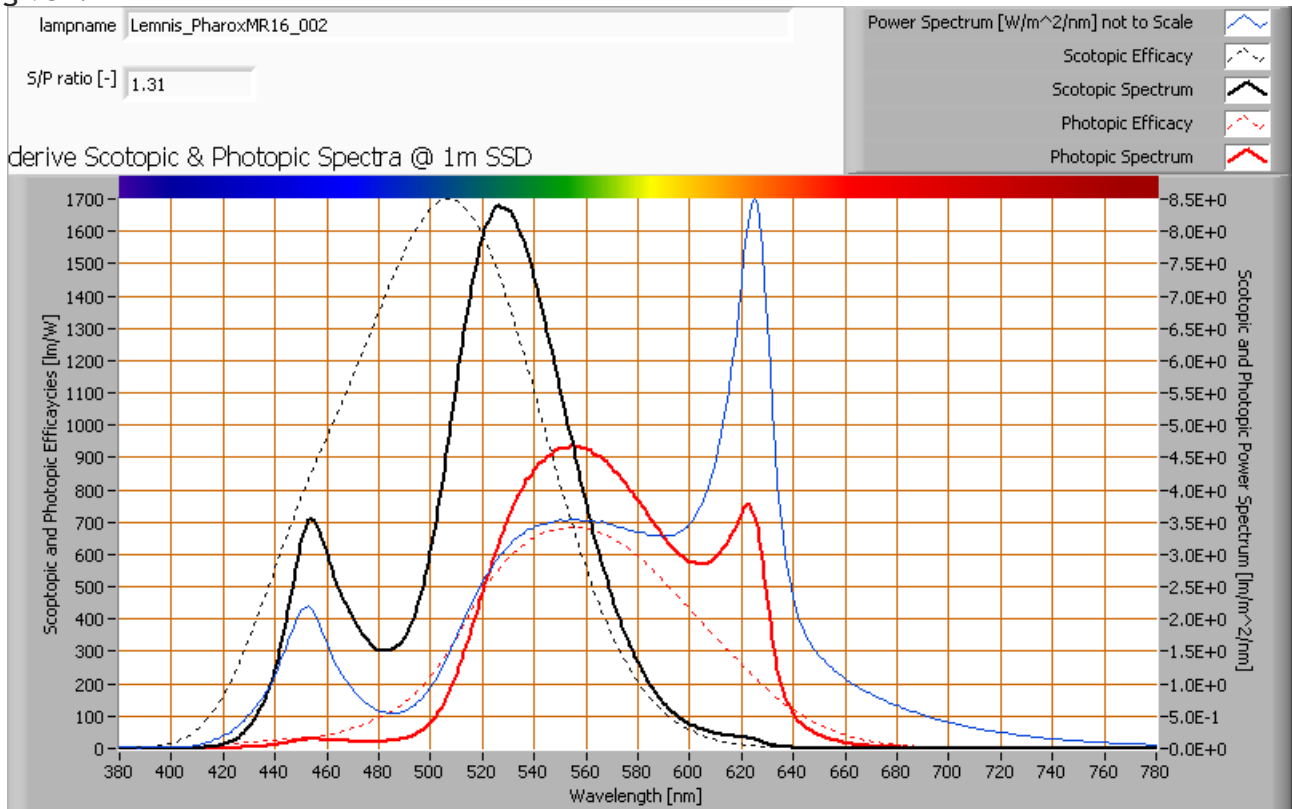
parameter	value	unit
PAR-number	3.6	uMol/s/m ²
PAR-photon current	2.4	uMol/s
PAR-photon efficacy	0.5	uMol/s/W

The PAR efficiency is 62 % (valid for the PAR wave length range of 400 - 700 nm). This is the maximum percentage of the total of photons in the light that is effectively used by the average plant (since the plant might not take 100 % of the photons at the frequency where its relative sensitivity is 100 %).

Lamp measurement report – 23 March 2011

S/P ratio

The S/P ratio and measurement is explained on the OliNo website. Here the results are given.

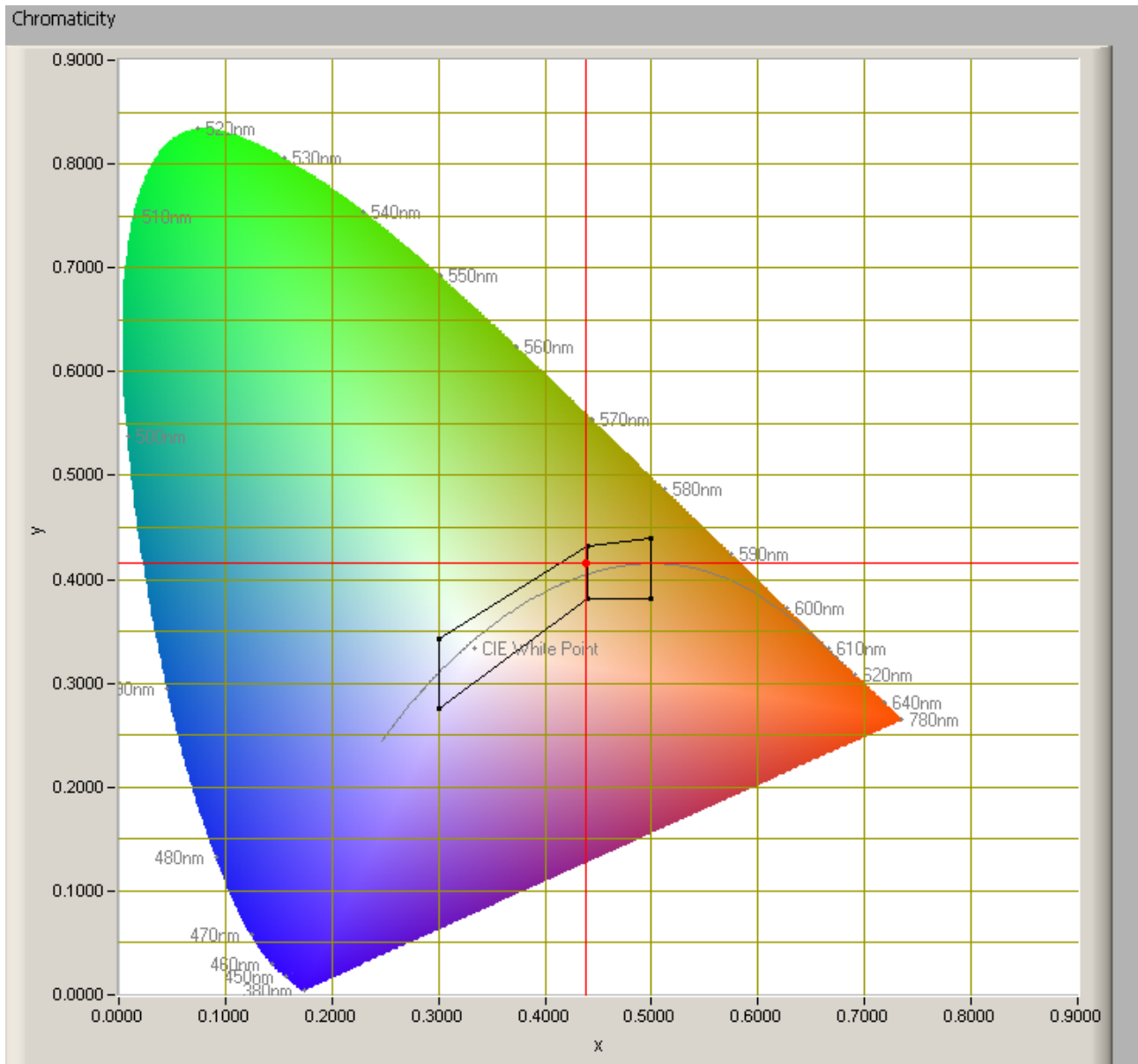


The power spectrum, sensitivity curves and resulting scotopic and photopic spectra (spectra energy content defined at 1 m distance).

The S/P ratio of the light coming from this lamp is 1.3.
More info on S/P ratio can be found on the OliNo website.

Lamp measurement report – 23 March 2011

Chromaticity diagram

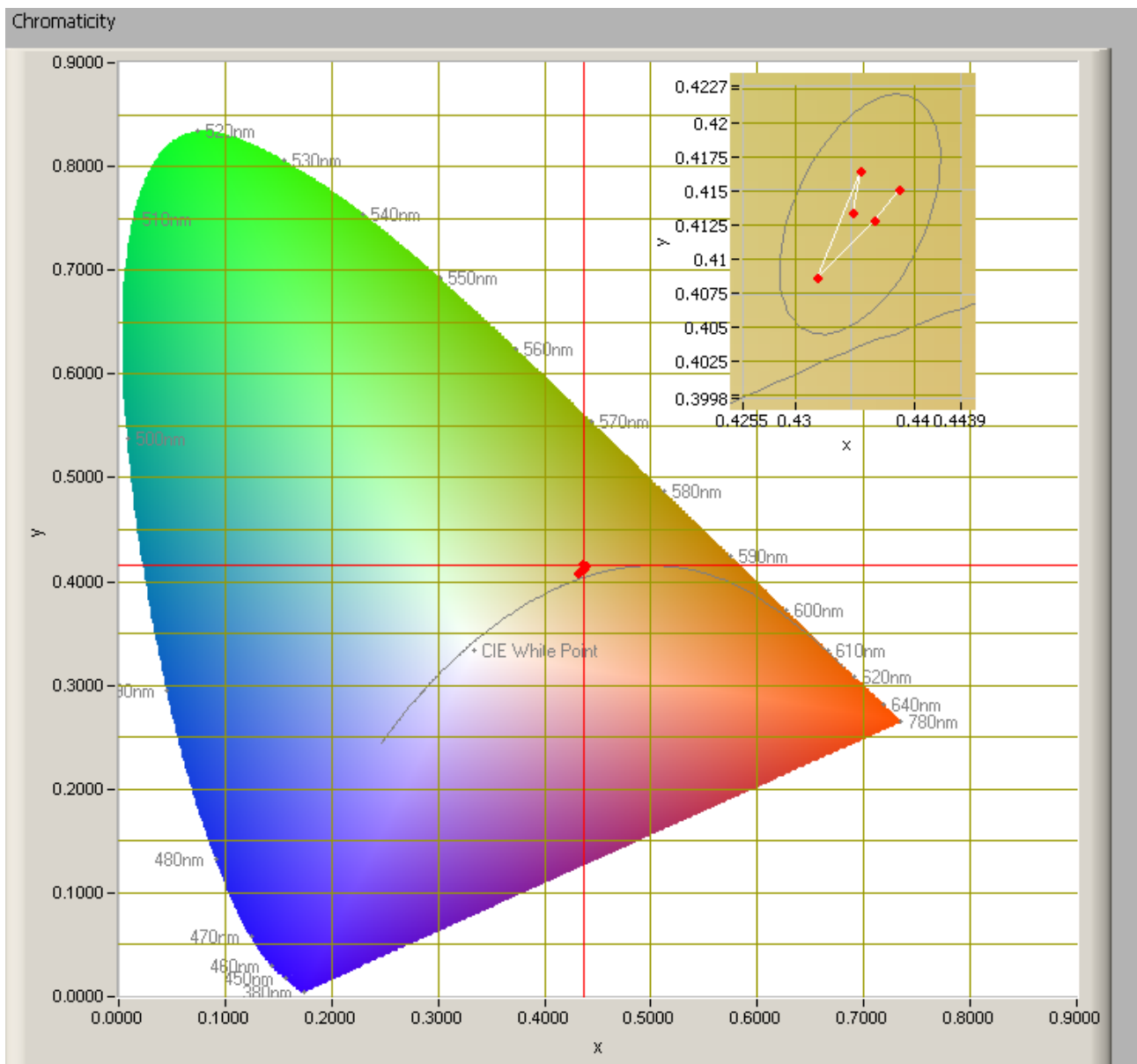


The chromaticity space and the position of the lamp's color coordinates in it.

The point of the light in this diagram is inside the area indicated with class A. This area indicates an area for signal lamps, see also the article on signal lamps and color areas on the OliNo website.

The color coordinates are $x=0.4354$ and $y=0.4133$.

Lamp measurement report – 23 March 2011



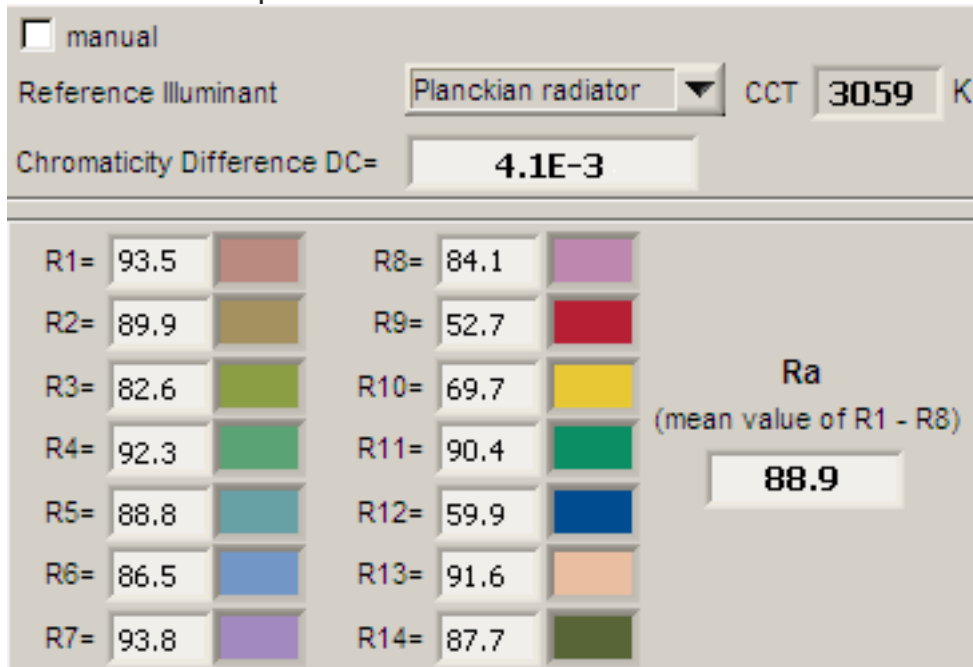
Color points of the 5 lamps in a 5-stepped MacAdams ellipse.

Color Rendering Index (CRI) or also Ra

Herewith the image showing the CRI as well as how well different colors are represented (rendered). The higher the number, the better the resemblance with the color when a black body radiator would have been used (the sun, or an incandescent lamp). Practical information and also some critics about the CRI can be found on the OLiNo website. Each color has an index R_x , and the first 8 indexes ($R_1 \dots R_8$) are averaged to compute

Lamp measurement report – 23 March 2011

the Ra which is equivalent to the CRI.



CRI of the light of this lightbulb.

This value of 89 indicates how well the light of this lamp can render well a set of reference colors, this in comparison with the light of a reference source (for color temperatures < 5000K a black radiator is used as reference and for color temperatures > 5000K the sun or the light outside during the day).

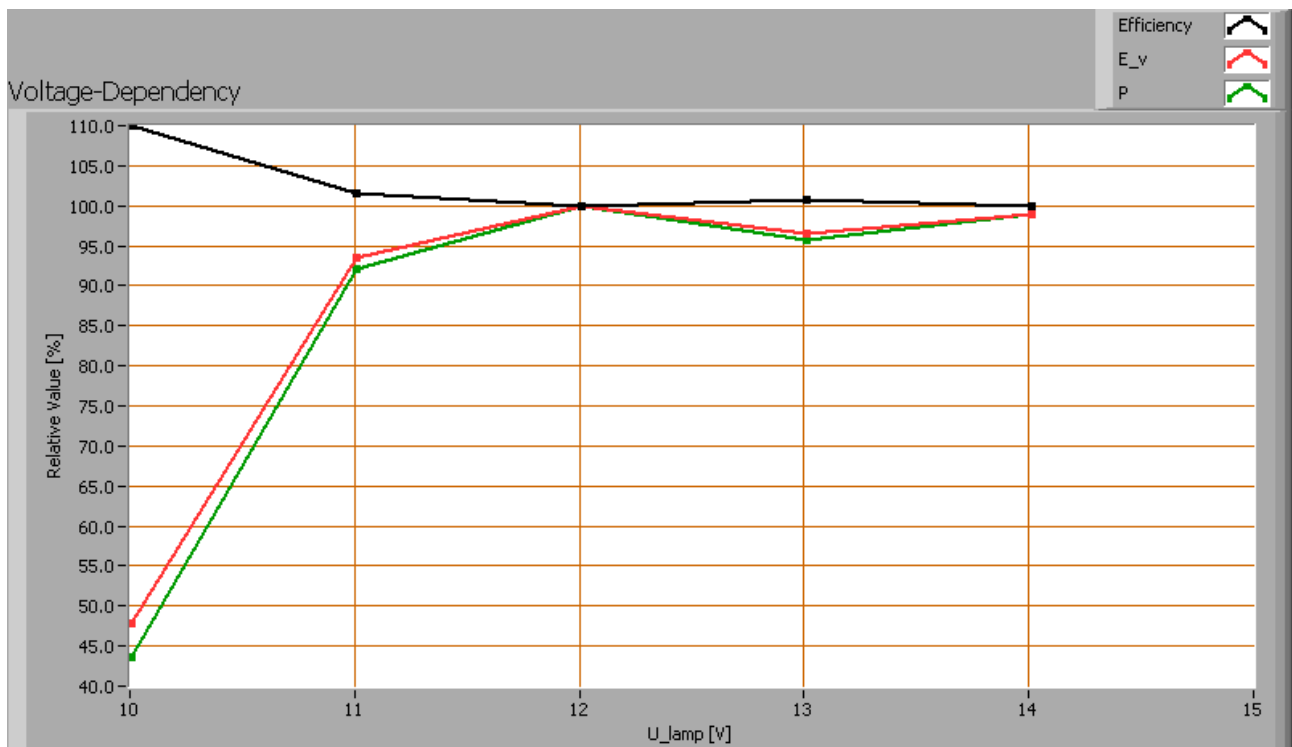
The value of 89 is bigger than the value of 80 that is considered as a minimum for working areas in general.

Note: the chromaticity difference is 0.0041 and indicates the distance to the Planckian Locus. There is no norm yet that states what the max deviation from white light is allowed to be. A reference with signal lights as a reference is given in the chromaticity diagram.

Voltage dependency

The dependency of a number of lamp parameters on the lamp voltage is determined. For this, the lamp voltage has been varied and its effect on the following light bulb parameters measured: illuminance E_v [lx], the lamp power P [W] and the luminous efficacy [lm/W] (this latter is estimated here by dividing the found E_v value by P).

Lamp measurement report – 23 March 2011



Lamp voltage dependencies of certain light bulb parameters

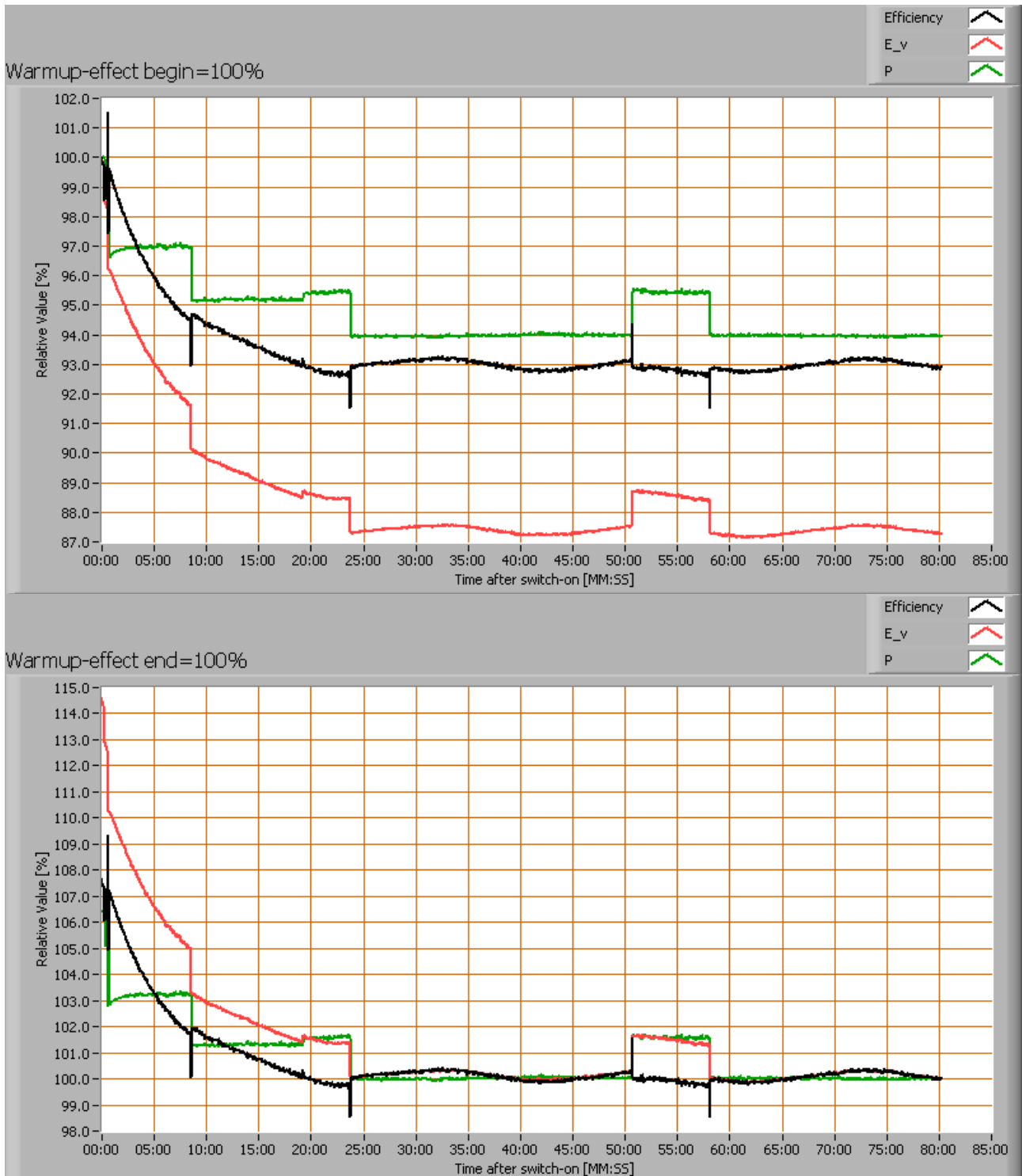
There is a non-constant dependency of the illuminance when the power voltage varies between 11 - 13 V DC. There is a non-constant dependency of the consumed power when the power voltage varies between 11 - 13 V DC.

When the voltage varies abruptly with + or - 0.25 V DC then this results in a variation of the illuminance of maximally 1.6 %. This difference in illuminance is not visible (when it occurs abruptly).

Warm up effects

After switch on of a cold lamp, the effect of heating up of the lamp is measured on illuminance E_v [lx], the lamp power P [W] and the luminous efficacy [lm/W].

Lamp measurement report – 23 March 2011



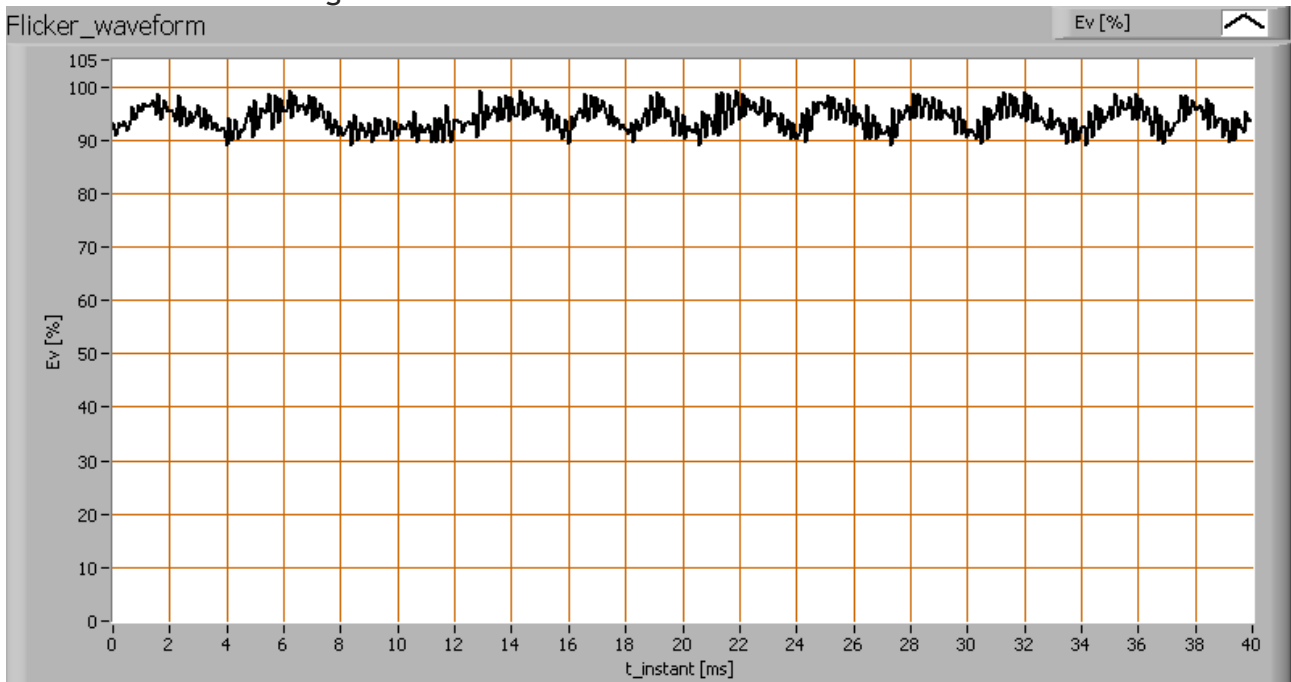
Effect of warming up on different light bulb parameters. In the first graph the 100 % level is put at begin, and in the last graph the 100 % level is put at the end.

Lamp measurement report – 23 March 2011

During the warmup time the illuminance varies during 13 minutes and decreases with 15 %. During the warmup time the power varies during 23 minutes and decreases with 6 %.

Measure of flickering

An analysis is done on the measure of flickering of the light output by this light bulb. See the article on flickering on OLiNo site for more information.



The measure of fast illuminance variation of the light of the light bulb

parameter	value	unit
Flicker frequency	3610	Hz
Illuminance modulation index	4	%

The illuminance modulation index is computed as: $(\text{max_Ev} - \text{min_Ev}) / (\text{max_Ev} + \text{min_Ev})$.

Lamp measurement report – 23 March 2011

Extra



Lamp measurement report – 23 March 2011

Photo courtesy by www.OliNo.org



Front side view and back side view.

Disclaimer

The information in this OliNo report is created with the utmost care. Despite this, the information could contain inaccuracies. OliNo cannot be held liable in this instance nor can the data in this report be legally binding.



Lamp measurement report – 23 March 2011

We strive to adhere to all of the conditions of any copyright holder in the publication of any illustration/article or item. In the event that we unintentionally violate said copyright holder's conditions in our articles, we kindly ask to be contacted here at OLiNo so that we can resolve any disputes, issues or misunderstandings.

License

It is permitted ONLY to use or publish this report in its entirety and in unaltered form via internet or other digital or written media in any form. To guarantee the reliability and accuracy of the report, it is strictly prohibited to change or alter parts of the report and/or republish it in a modified content.