

Lamp measurement report - 9 Sep 2021

CAFL-150U-850-30-BKUB

by

SloanLED



Lamp measurement report - 9 Sep 2021

Summary measurement data dated 2021-09-05

parameter	meas. result	remark
Color temperature	5004 K	neutral white
Luminous intensity I _v	40385.6 Cd	Measured straight underneath the lamp.
Illuminance modulation index	0 %	Measured with a light sensor looking at the lamp (angle not defined). Is a measure for the amount of flickering.
SVM	0.0	Stroboscopic Visibility Measure, and must be ≤ 0.9 (from September 1, 2024 ≤ 0.4) at full-load for certain (O)LEDs per EU regulation 2019/2020.
Beam angle	33 deg	33 deg is the beam angle for all C-planes since the lamp is symmetrical along its 1st axis. Flux code: 81 95 99 100 100.
Power P	149.5 W	The net power consumed.
Power Factor	0.98	An electrical load with this power factor means that for every 1 kWh net energy consumed, there has been 0.21 kVAh for reactive energy.
Displacement factor	0.98	The cosine of the phase angle between the fundamental harmonic of the mains supply voltage and the fundamental harmonic of the mains current (from EU 2019/2020).
THD	10 %	Total Harmonic Distortion.
Max inrush current	37.702 A	This current has been found at a voltage start angle of 80 degrees.
Luminous flux	22281 lm	Measured with photogoniometer, calculation done as described in LM79-08.
Luminous efficacy	149 lm/W	
EU2021-label classification	D	The energy class, from A (more efficient) to G (least efficient). This label is an update of the previous version, and compulsory from Sept 2021.
EU2013-label classification	A++	The energy class, from A++ (more efficient) to E (least efficient). This energy label will be replaced on September 21, 2021.
CRI_Ra	84	Color Rendering Index.
Rf_TM30	83	TM30-15 is an improved indicator (over CRI) of how well colors are rendered.
Rg_TM30	94	Gamut Area Ratio.

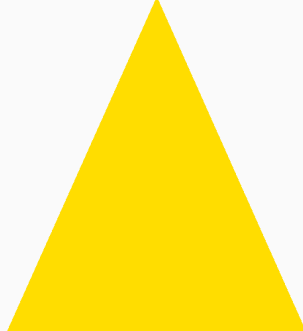
Lamp measurement report - 9 Sep 2021

parameter	meas. result	remark
Coordinates chromaticity diagram	x=0.3455 en y=0.3573	
Fitting	230V	This lamp is connected directly to the grid voltage.
Luminous flux for chicken	39983 cLm	Total radiant flux adjusted by color sensitivity curve (from 350 - 780 nm) of chickens (Gallus domesticus).
S/P ratio	2.0	This factor indicates the amount of times more efficient the light of this light bulb is perceived under scotopic circumstances (low environmental light level).
L x W x H external dimensions	350 mm x 200 mm x 50 mm	External dimensions of the lamp.
L x W luminous area	315 mm x 160 mm	Dimensions of the luminous area (used in Eulumdat file). It is the surface of the smallest rectangle around all LEDs.
General remarks		<p>The ambient temperature during the whole set of illuminance measurements was 24.2 - 25.2 deg C.</p> <p>The temperature of the lamp gets maximally about 47 degrees hotter than ambient temperature.</p> <p>Warm up effect: During the warmup time the illuminance varies during 28 minutes and decreases with 5 %.</p> <p>During the warmup time the power doesn't vary significantly (5 %).</p> <p>The variation in efficacy (calculated as indication by simply dividing the illuminance by the power) during the warming up is -4 %.</p> <p>A very high negative value indicates a significant decrease for instance due to heating up of the lamp (decrease of lifetime).</p> <p>Voltage dependency: There is no (significant) dependency of the illuminance when the power voltage varies between 200 - 250 V .</p> <p>There is no (significant) dependency of the consumed power when the power voltage varies between 200 - 250 V .</p> <p>At the end of the article an additional photo.</p>
Eff-variation	-4 %	This is the variation in efficacy (calculated as indication by simply dividing the illuminance by the power) during the warming up. A very high negative value indicates a significant decrease for instance due to heating up of the lamp (decrease of lifetime).
Dimmable	no/not known	Info from manufacturer.

Lamp measurement report - 9 Sep 2021

parameter	meas. result	remark
Melanopic effect factor	0.700	According to norm DIN SPEC 5031-100:2015-08.
Melanopic Ratio	0.58	This ratio multiplied with the lux value gives the EML-value (Equivalent Melanopic Value), used in table L2 of WELL std 2019-Q3.
Blue Light Hazard risk group	0	0=exempt, 1=low, 2 = moderate, 3=high risk. Indication value only for straight underneath the lamp.
form factor	flood light	

Overview table

m.	Ø 50%		C0-180: 33° C90-270: 33°	E (lux)	Luminaire Efficacy
	C0-180	C90-270			149 (lumen per Watt)
2	1.2	1.2		10096	Half-peak diam C0-180
3	1.8	1.8		4487	1.17 x diameter(m)
4	2.3	2.3		2524	Half-peak diam C90-270
5	2.9	2.9		1615	1.17 x diameter(m)
6	3.5	3.5		1122	Illuminance
7	4.1	4.1		824	40386 / distance ² (lux)
8	4.7	4.7		631	Total Output
					22281 (lumen)

Please note that this overview table makes use of calculations, use this data with care as explained on the OliNo site.

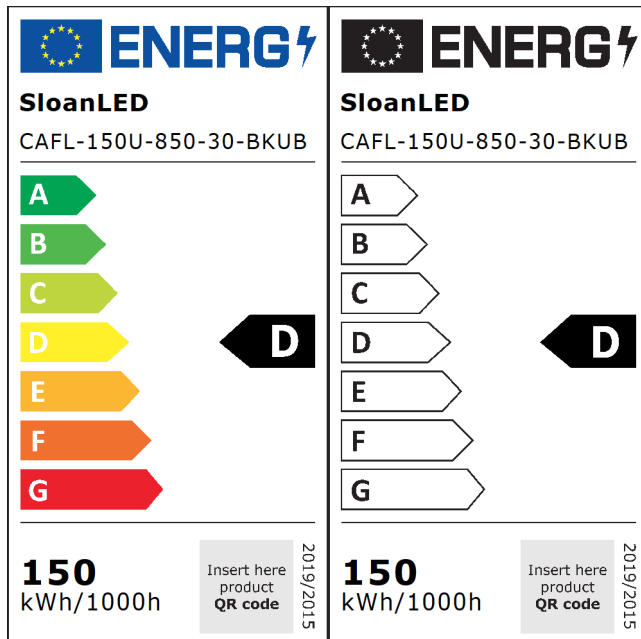
Lamp measurement report - 9 Sep 2021

EU 2021 Energy label classification

These energy labels are in force since Sept 2021. They have been drawn up in accordance with the Commission Delegated Regulation (EU) 2019/2015.

It applies to light sources, with requirements for the x, y chromaticity coordinates (is fulfilled), the luminous flux (is fulfilled) and colour rendering index CRI (is fulfilled). These requirements are fulfilled.

The energy efficiency class of light sources shall be determined on the basis of the total mains efficacy η_{TM} . This is calculated by dividing the declared useful luminous flux (18971 lm, flux in a narrow cone (90°)) by the declared on-mode power consumption P_{on} (149.5 W) and multiplying by the applicable factor F_{TM} that depends on the light source type (1.176, type: Directional (DLS) operating on mains (MLS)). The result is the total mains efficacy $\eta_{TM} = 149$ (lm/W).



EU energy label for this light source

Lamp measurement report - 9 Sep 2021

EU 2013 Energy label classification

Since Sept 2013 these labels will be needed.

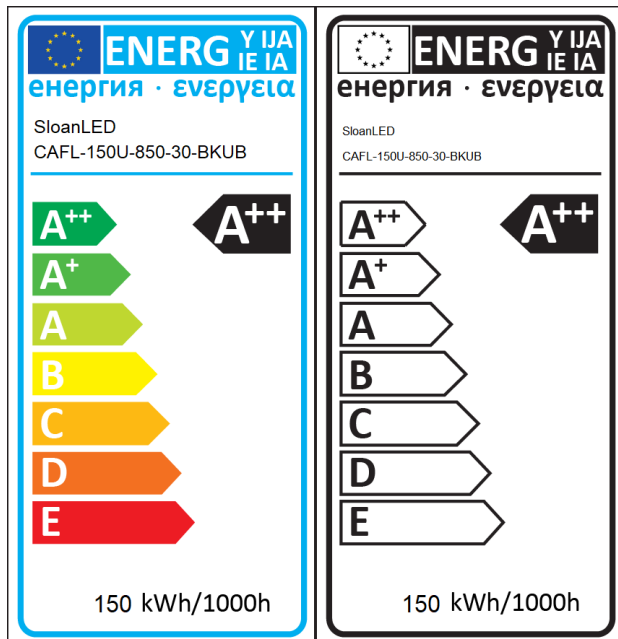
Important for the energy classification are the corrected rated power and the useful luminous flux.

The measured rated power is 149.5 W and might need to be corrected. The correction is dependent from the lamp type and whether or not the lamp control gear is included or not.

The choice for this lamp is the following classification: **Lamps with own control gear (external or internal)**. As a result the corrected rated power becomes: 149.5 W.

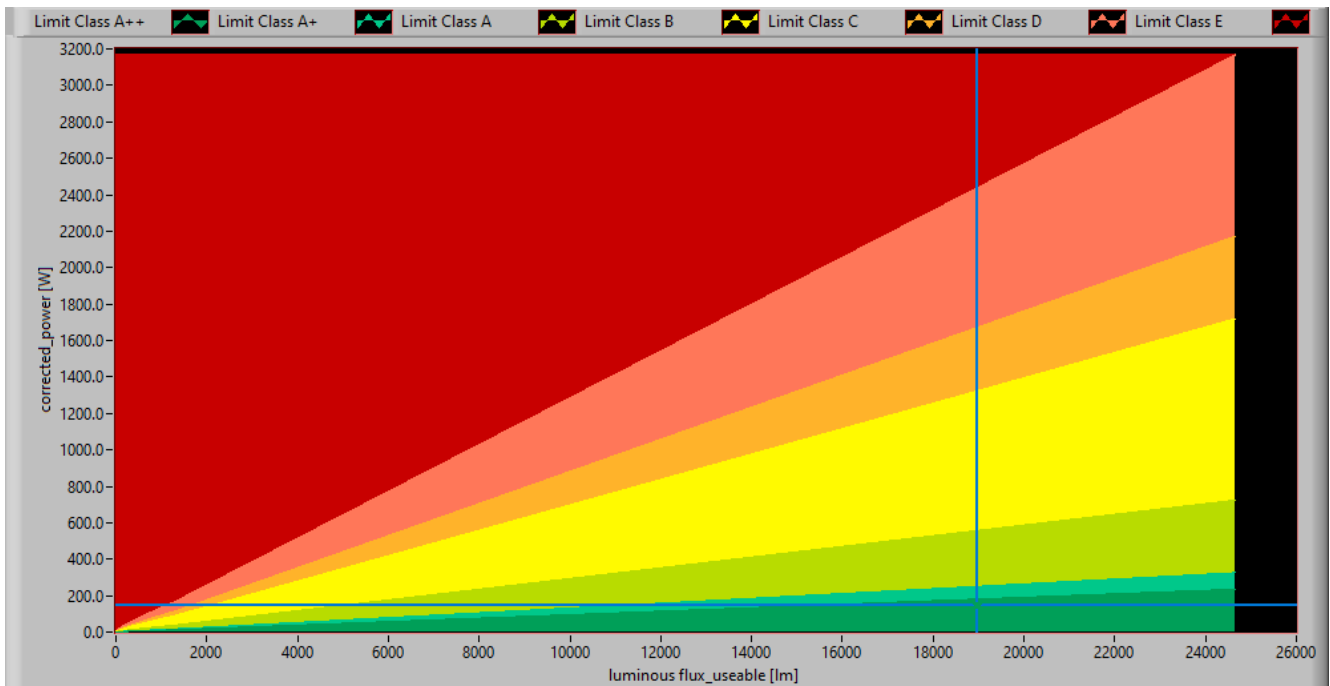
The luminous flux measured is 22281 lm. The classification of this lamp needed to determine the useful flux is: **Other directional lamps**. Then the useful flux becomes 18972 lm. Now a reference power can be calculated.

The energy efficiency coefficient is $P_{\text{corr}} / P_{\text{ref}} = 0.11$.



EU energy label for this lamp

Lamp measurement report - 9 Sep 2021

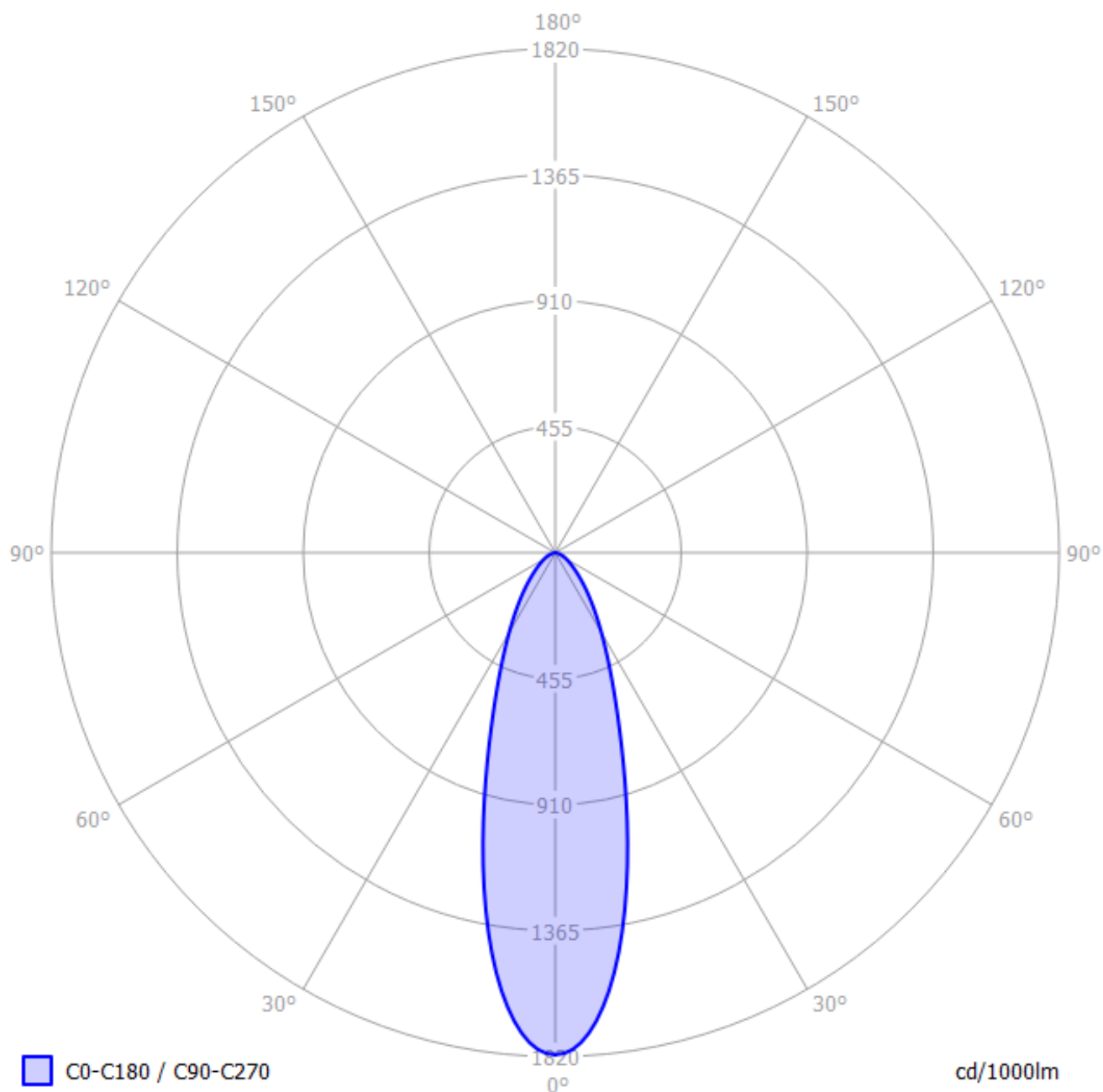


The lamp's performance in the lumen-Watt field, with the energy efficacy fields indicated.

Lamp measurement report - 9 Sep 2021

Eulumdat light diagram

This light diagram below comes from the program Qlumedit, that extracts these diagrams from an Eulumdat file.



The light diagram giving the radiation pattern.

The light diagram indicates the beam in the C0-C180 plane and in the plane perpendicular to that, the C90-C270 plane. These beams are equal as the lamp has symmetry over its first axis (the vertical axis).

When using the Ev or Iv values per inclination angle, the beam angle can be computed, being 33 deg for the C0-C180 plane and 33 deg for the C90-C270 plane.

Lamp measurement report - 9 Sep 2021

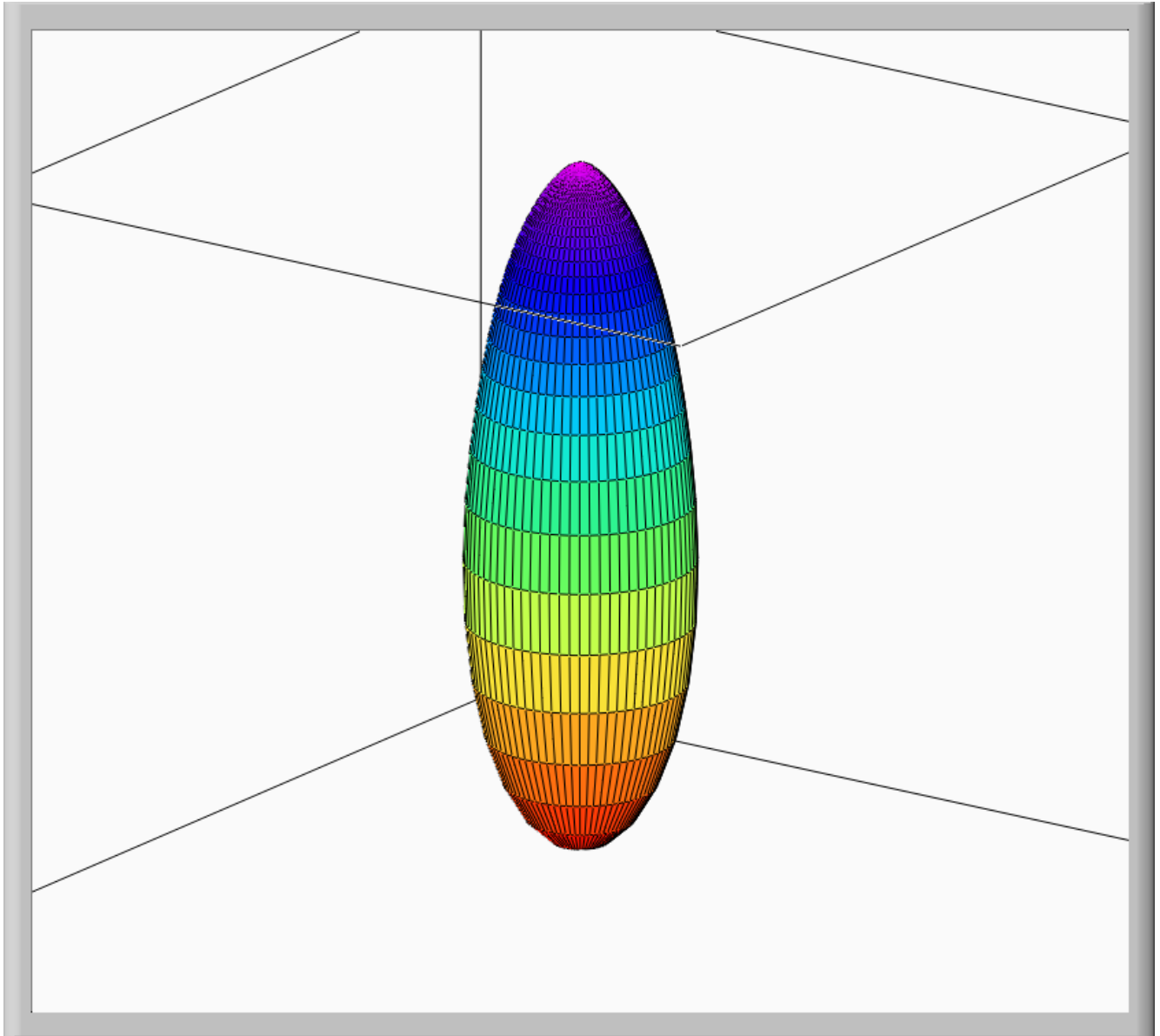
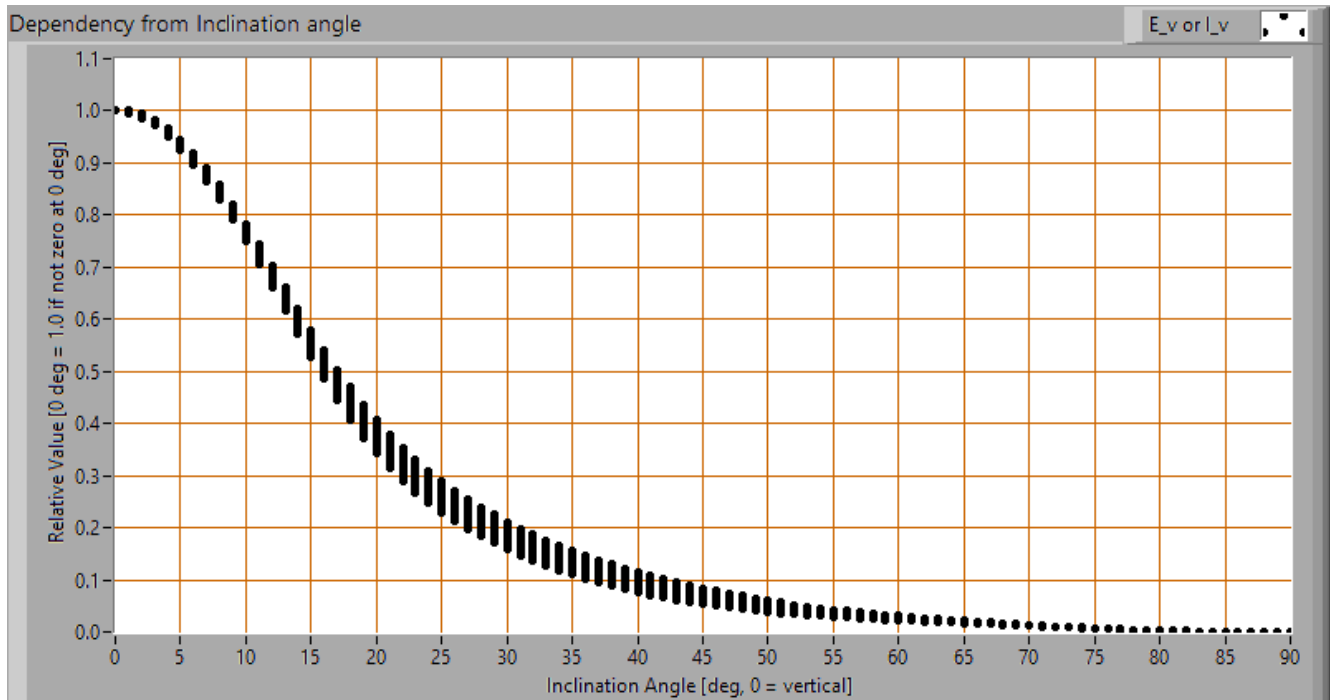


Image of the light distribution pattern in 3D.

Lamp measurement report - 9 Sep 2021



Intensity data of every measured turn angle at each inclination angle.

This plot shows per inclination angle the intensity measurement results for each turn angle at that inclination angle. There normally are differences in illuminance values for different turn angles. However for further calculations the averaged values will be used.

Luminous flux

With the averaged illuminance data at 1 m distance, taken from the graph showing the averaged radiation pattern, it is possible to compute the luminous flux.

The result of this computation for this light spot is a luminous flux of 22281 lm.

Luminous efficacy

The luminous flux being 22281 lm, and the consumed power of the lamp being 149.5 Watt, results in a luminous efficacy of 149 lm/Watt.

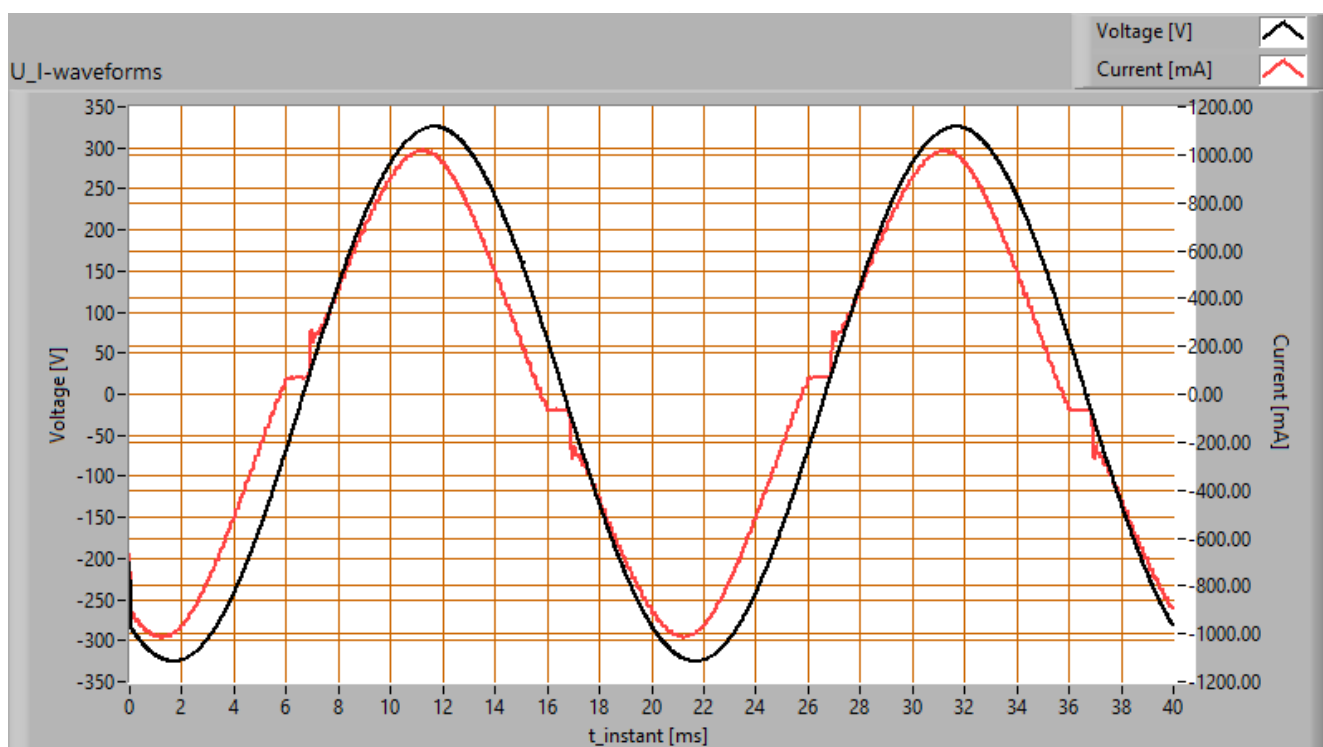
Lamp measurement report - 9 Sep 2021

Electrical properties

Lamp voltage	230.12 V AC
Lamp current	0.664 A
Power P	149.5 W
Apparent power S	152.8 VA
Power factor	0.98
Displacement factor DF	0.98

EU 2019/2020: For LED and OLED, $DF \geq 0,5$ at $5\text{ W} < P_{\text{on}} = 10\text{ W}$, $DF \geq 0,7$ at $10\text{ W} < P_{\text{on}} = 25\text{ W}$, $DF \geq 0,9$ at $25\text{ W} < P_{\text{on}}$.

Of this lamp the voltage across and the resulting current through it are measured and graphed.



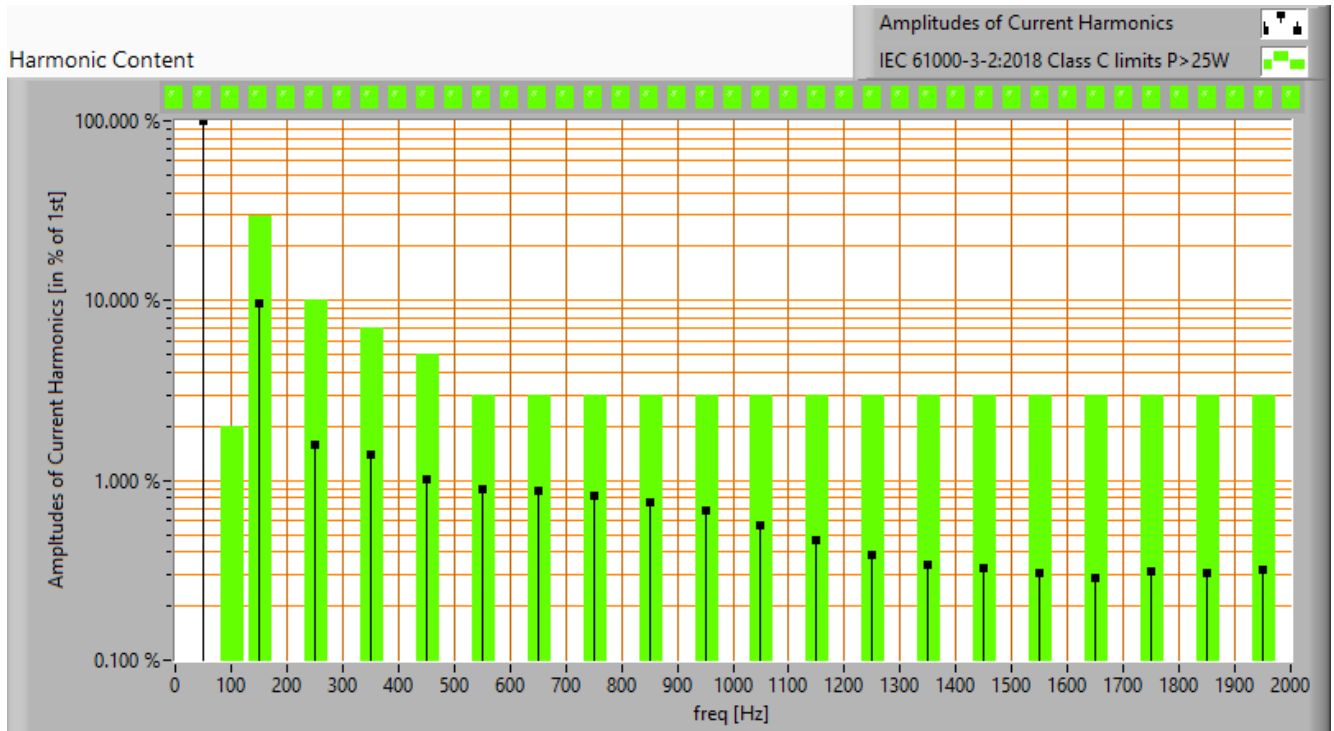
Voltage across and current through the lightbulb

This current waveform has been checked on requirements posed by the norm IEC 61000-3-2:2018. This norm contains requirements for lamps with a power 5 W, 5 - 25 W and $> 25\text{ W}$. This lamp consumes 149.5 W.

NOTE: standard only applies to lamps with supply voltages higher than 220 V AC.

When power is more than 25 W there are requirements on the harmonics in the current.

Lamp measurement report - 9 Sep 2021



The harmonics in the current compared to the requirements in IEC61000-3-2:2018

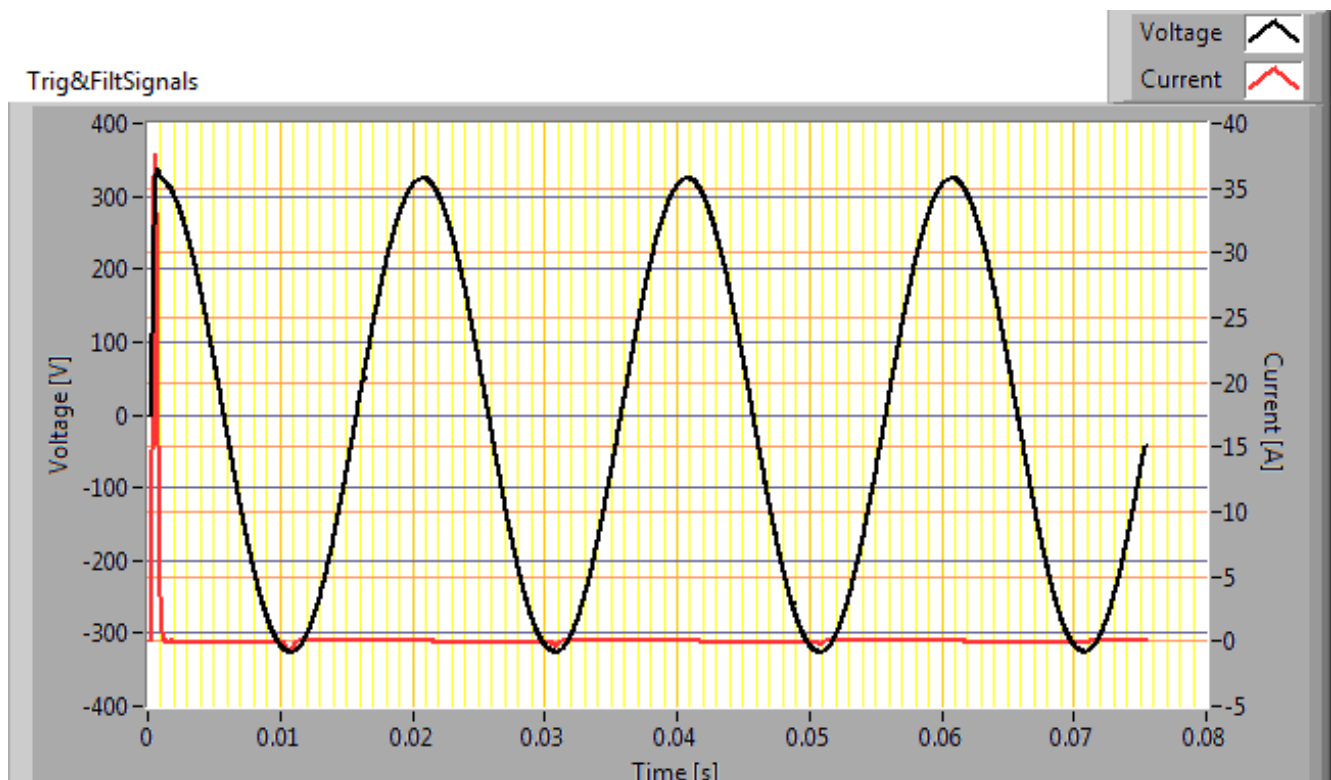
The requirements in norm IEC61000-3-2:2018 are met.

Lamp measurement report - 9 Sep 2021

Inrush current

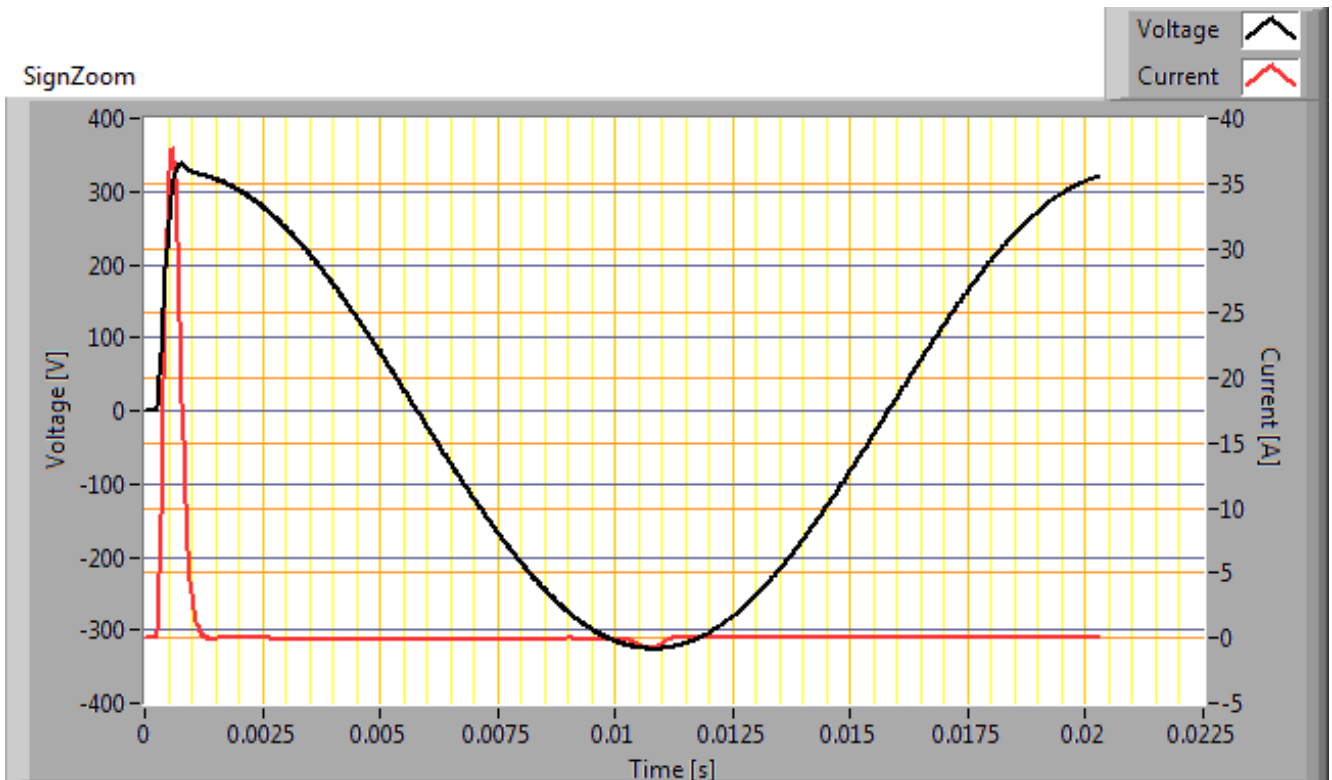
The inrush current has been measured for different voltage start angles; from 0 - 170 degrees with a 10 degrees step. The current- and voltage values have been acquired at a sample speed of 39.9 kS/s. Then this data has been fed into a second order 2kHz low pass Butterworth filter. This removes the current spikes that do not represent relevant values. The lamp was two minutes off before every inrush current measurement was made.

Test voltage	230.0 V	
Frequency of the voltage	50.0 Hz	
Maximum inrush current	37.702 A	This current has been found at a voltage start angle of 80 degrees.
Pulse width of max inrush current	6.8E-4 s	This is the time that the pulse is higher than 10 % of the max inrush current.
Minimal inrush current	1.829 A	This current has been found at a voltage start angle of 170 degrees.
$I^2 \times t$ after 10 ms at 0 deg voltage start angle	4.069E-2 A	This is the $I^2 t$ value when a zero crossing detector is used to start the voltage from 0 degrees.

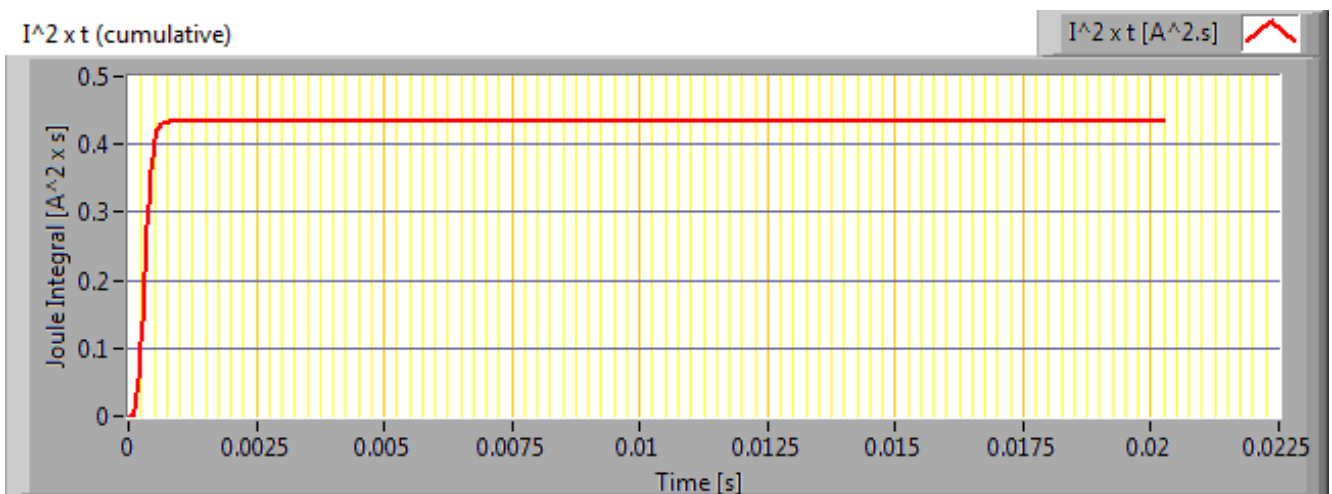


Inrush current found at worst-case voltage start angle

Lamp measurement report - 9 Sep 2021



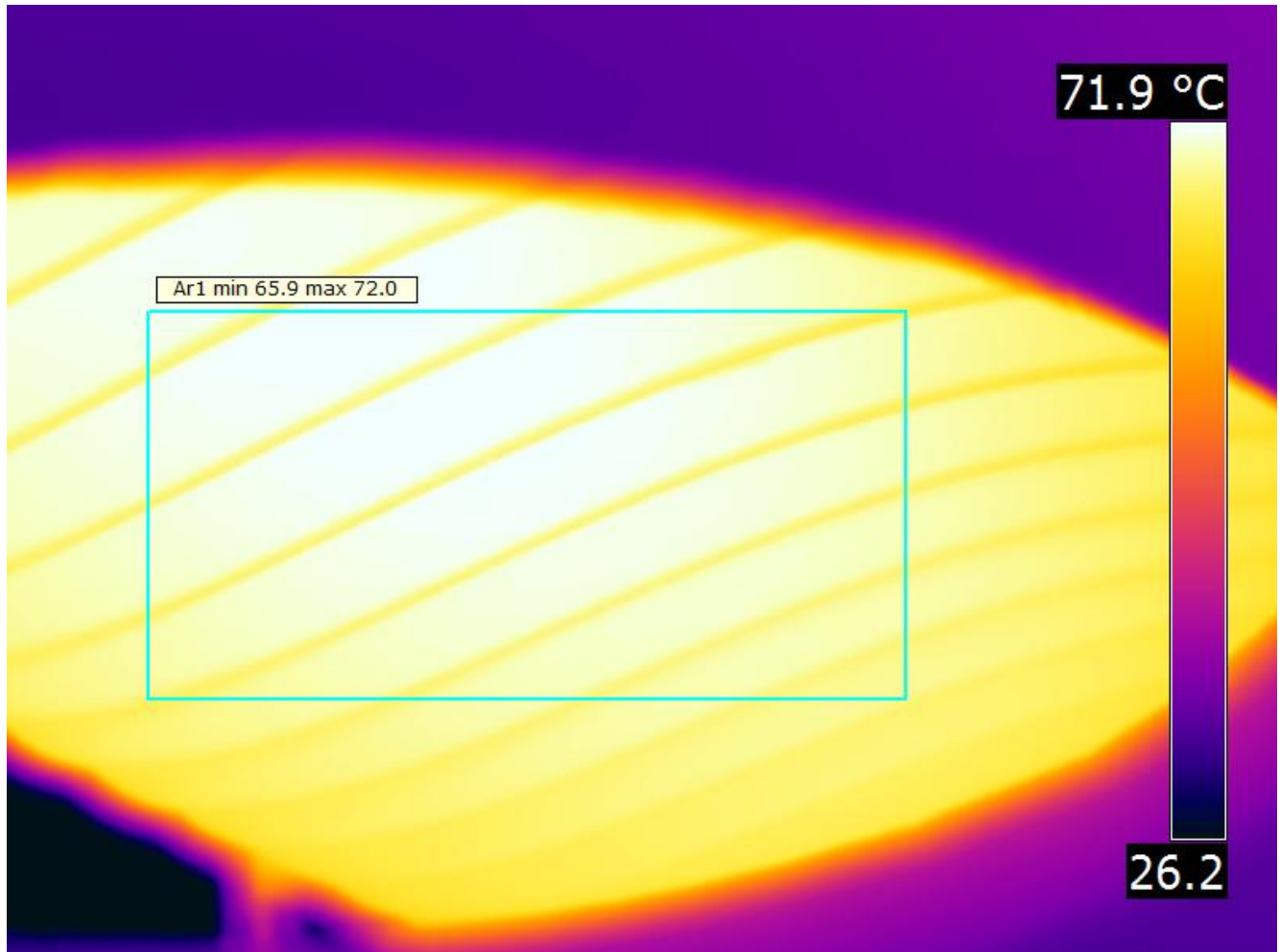
First cycle of the maximum inrush current



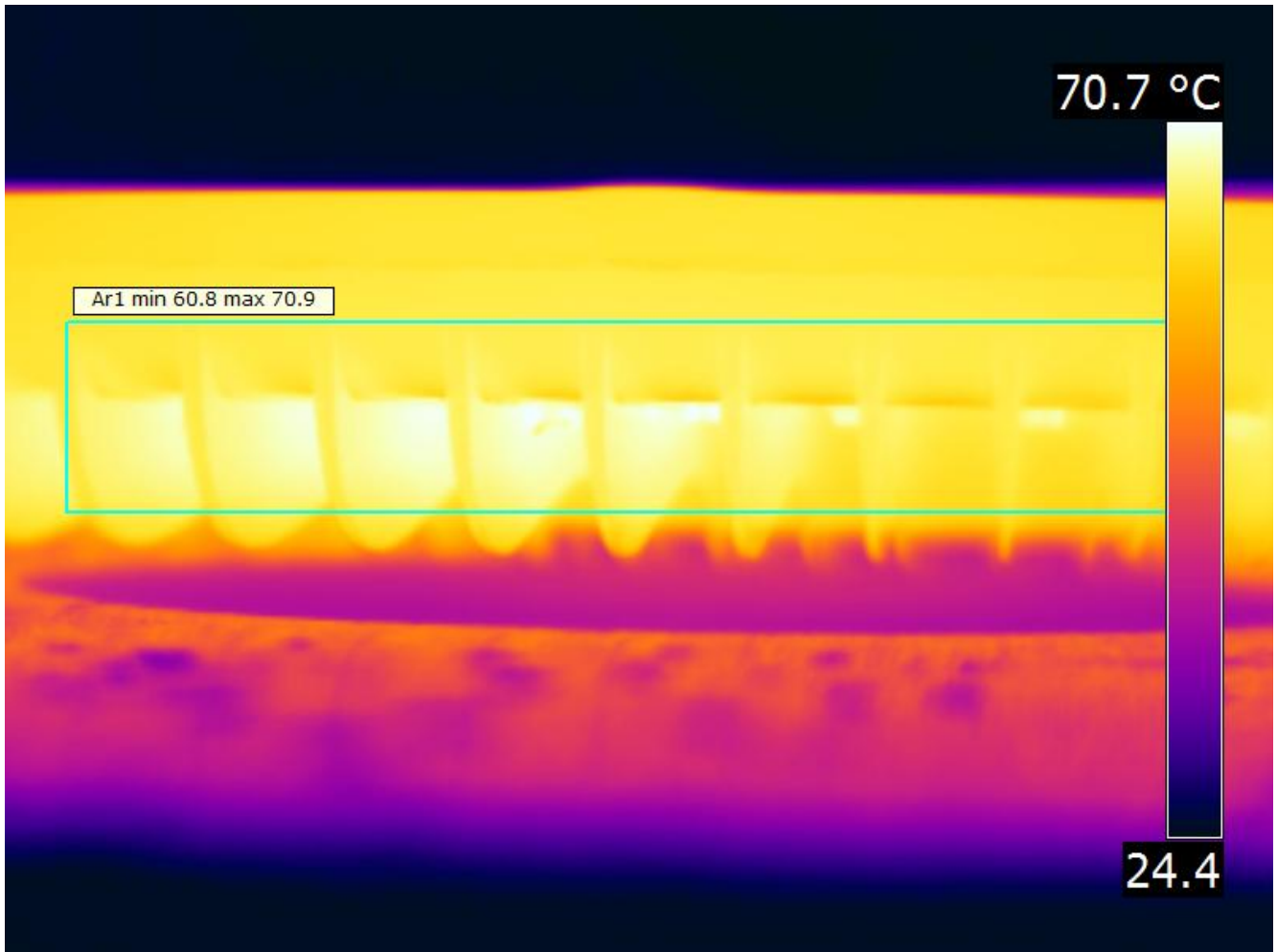
The energy I^2t during the first 10 ms of the first current cycle

Lamp measurement report - 9 Sep 2021

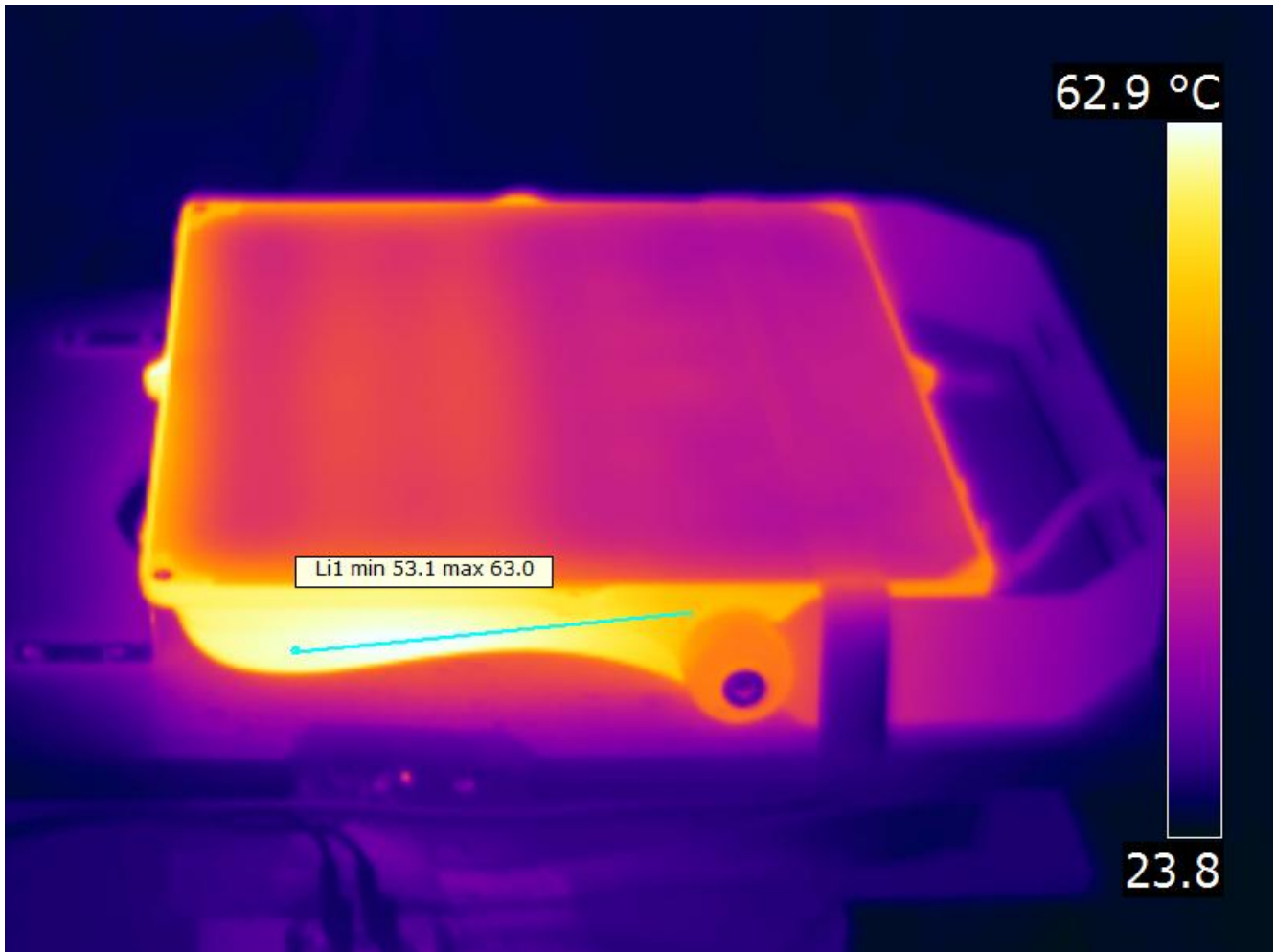
Temperature measurements lamp



Lamp measurement report - 9 Sep 2021



Lamp measurement report - 9 Sep 2021

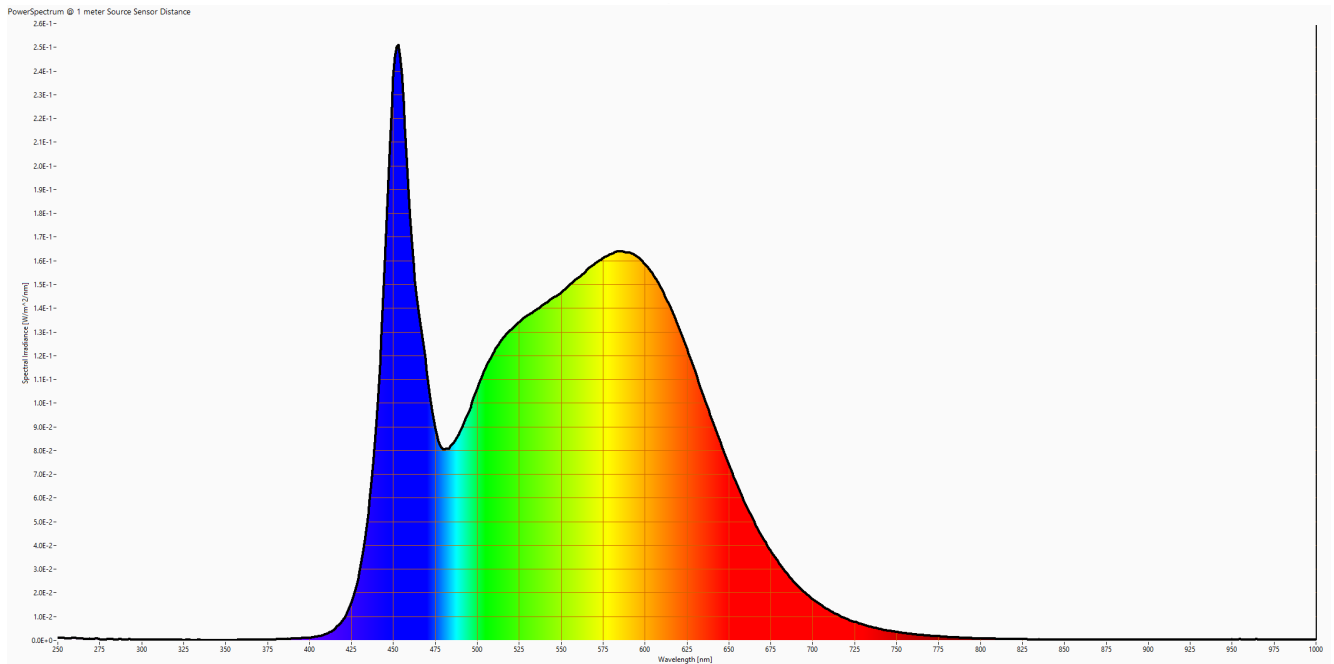


Temperature image(s).

status lamp	2 hours on
ambient temperature	25 deg C
reflected background temperature	25 deg C
camera	Flir T335
emissivity	0.95
measurement distance	0.5, 1 m
IFOV_geometric	0.136 mm per 0.1 m distance
NETD (thermal sensitivity)	50 mK

Lamp measurement report - 9 Sep 2021

Color temperature and Spectral power distribution

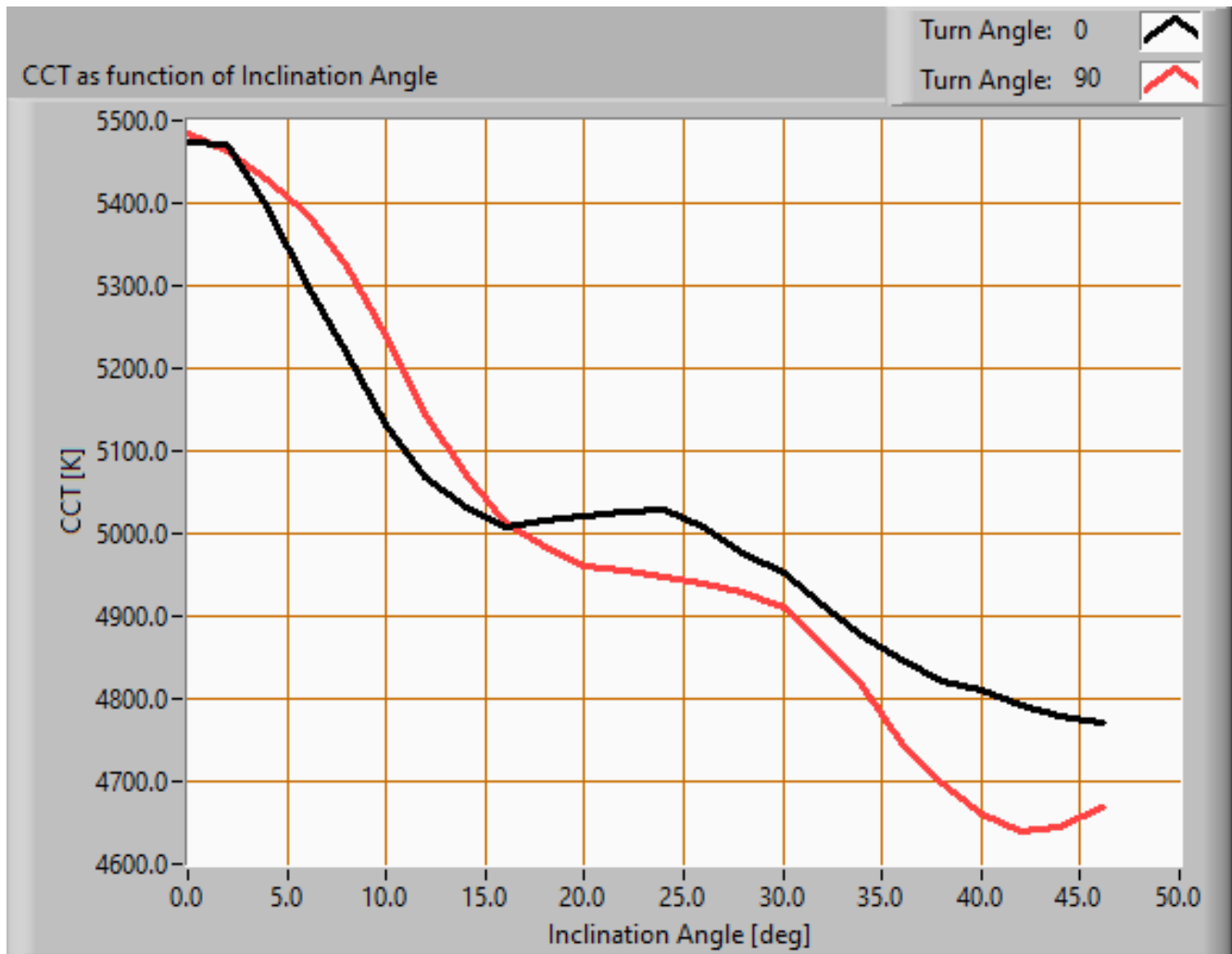


The spectral power distribution of this light bulb, energies on y-axis valid at 1 m distance.

The measured color temperature is 5004 K which is neutral white.

This color temperature is measured straight underneath the light bulb. Below a graph showing the color temperature for different inclination angles.

Lamp measurement report - 9 Sep 2021



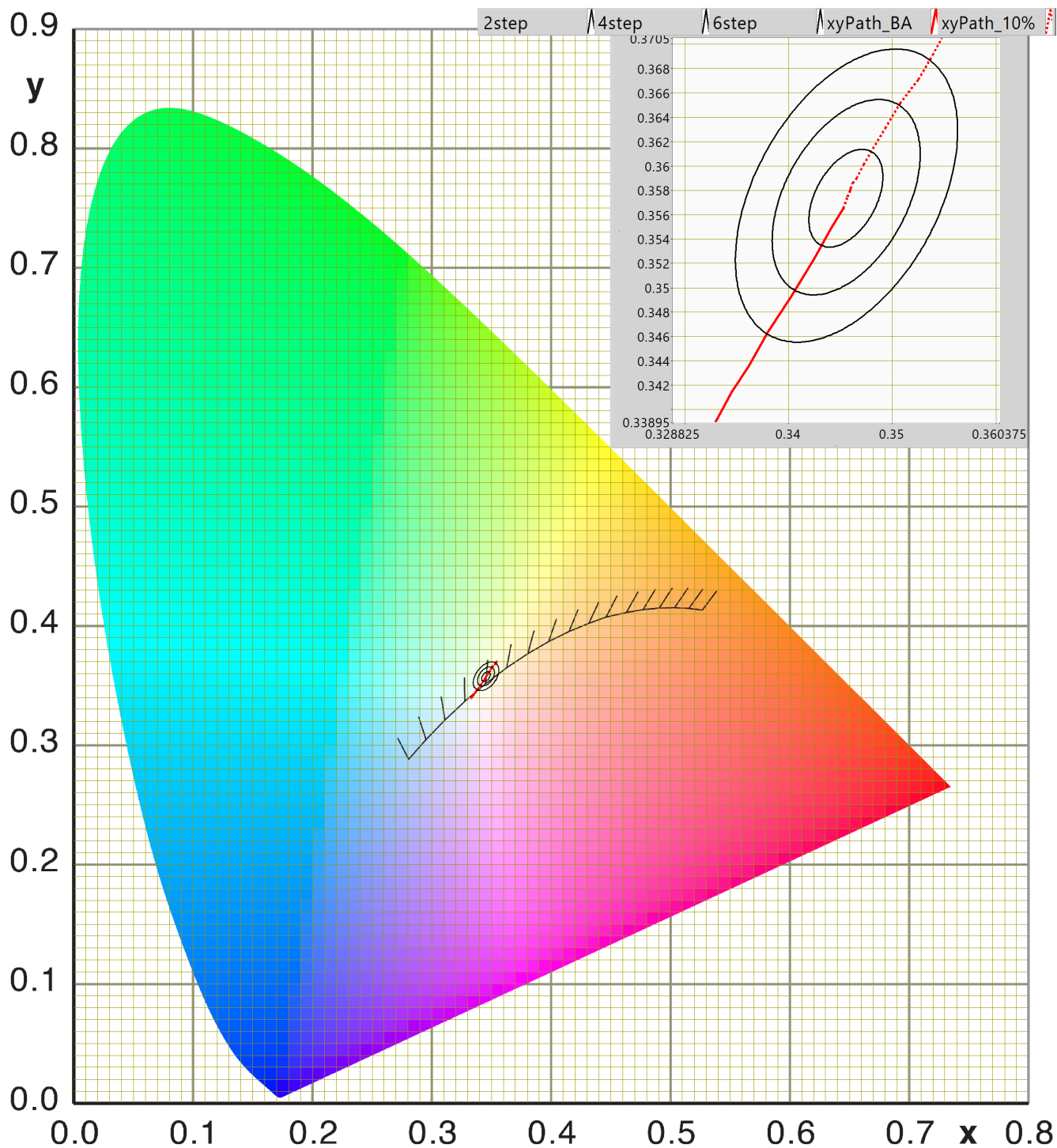
Color temperature as a function of inclination angle.

The color temperature is given for inclination angles up to 46 deg. Beyond that value the illuminance is lower than 10%% of Ev straight underneath the lamp, that it has not been used for color determination of the light.

For the C0-C180 plane: the beam angle of 33 deg is equivalent to 16.3 deg inclination angle, which is the area where most of the light falls within. The maximum variation of color temperature in this inclination area is about 9 %.

For the C90-C270 plane: the beam angle of 33 deg is equivalent to 16.3 deg inclination angle, which is the area where most of the light falls within. The maximum variation of color temperature in this inclination area is about 9 %.

Lamp measurement report - 9 Sep 2021

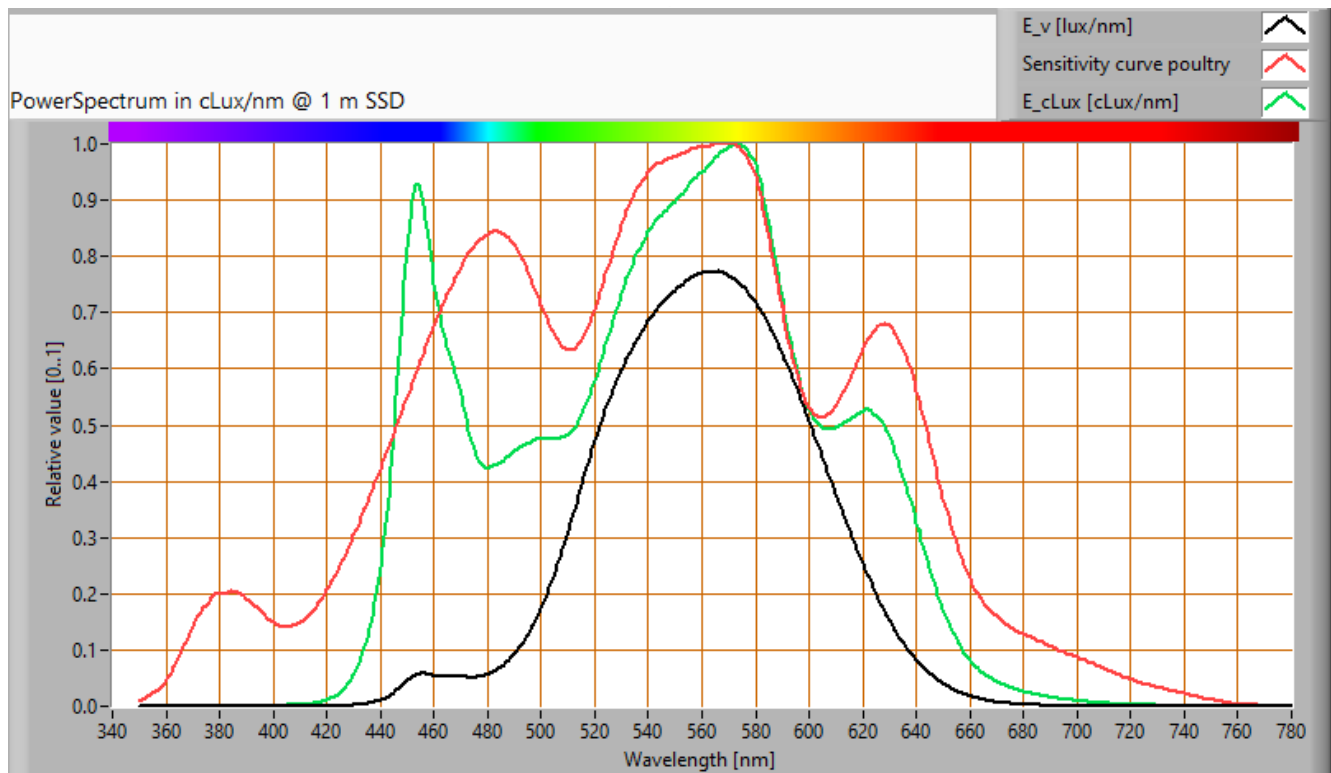


Color point dependent on inclination angle related to 2, 4 and 6 step MacAdam ellipse, for all angles within the beam angle (solid line) and for all angles where E_v dropped to 10 % value (dotted line)

Lamp measurement report - 9 Sep 2021

Luminous flux for chicken

The energy in the spectrum of the light of the lamp can be evaluated by the spectral sensitivity of the eye of chicken (N.B. Prescott and C.M. Wathes, 1999 and J. E. Saunders, J. R. Jarvis and C. M. Wathes, 2008).

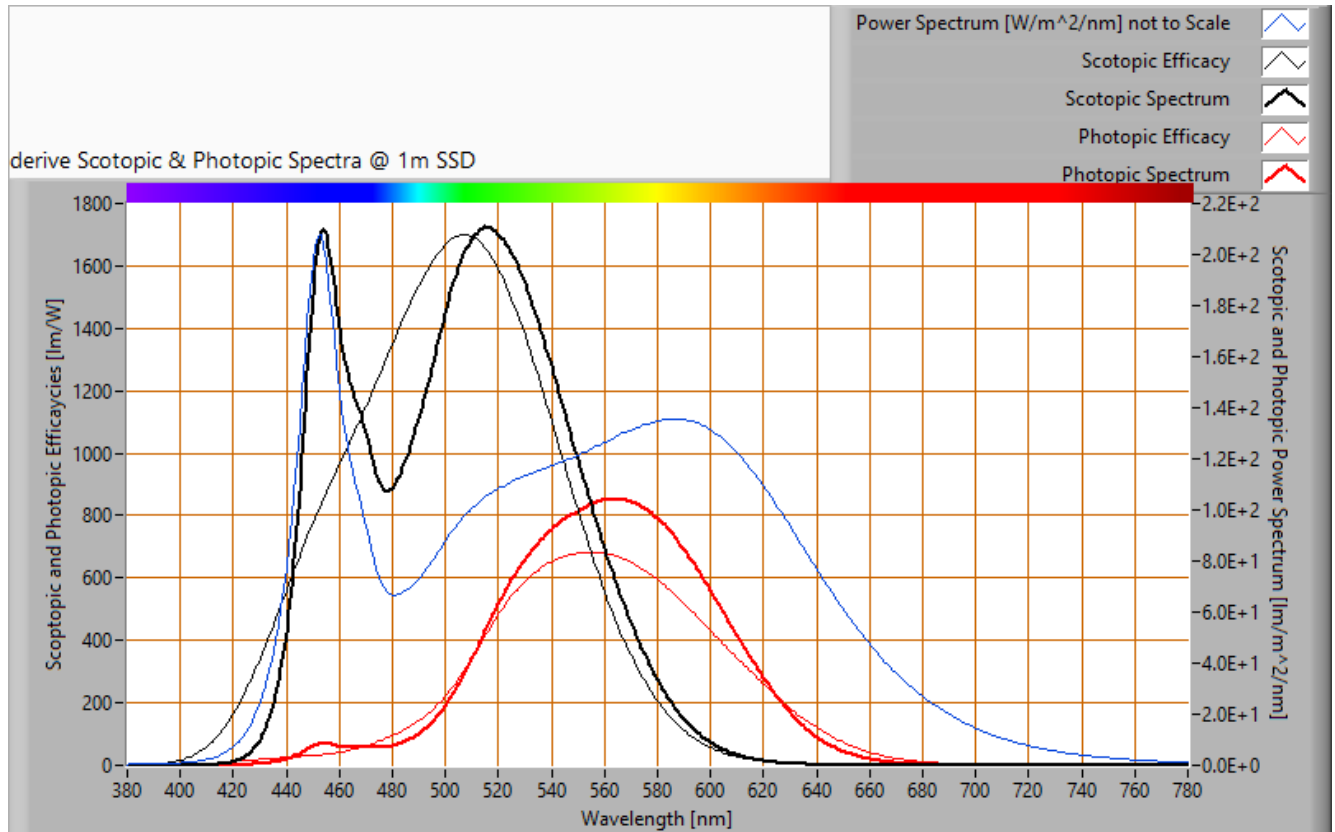


The spectrum of the light, multiplied by the spectral sensitivity of the human eye and the eye of a chicken.

parameter [unit]	value	explanation
Luminous flux [lm]	22281	The light of the lamp evaluated for a human eye.
Luminous flux chicken [cLm]	39983	The light of the lamp evaluated for the eye of a chicken.
Factor from lux to cLux	1.79	With this factor, the lux value of this light can be converted to the cLux value.

Lamp measurement report - 9 Sep 2021

S/P ratio

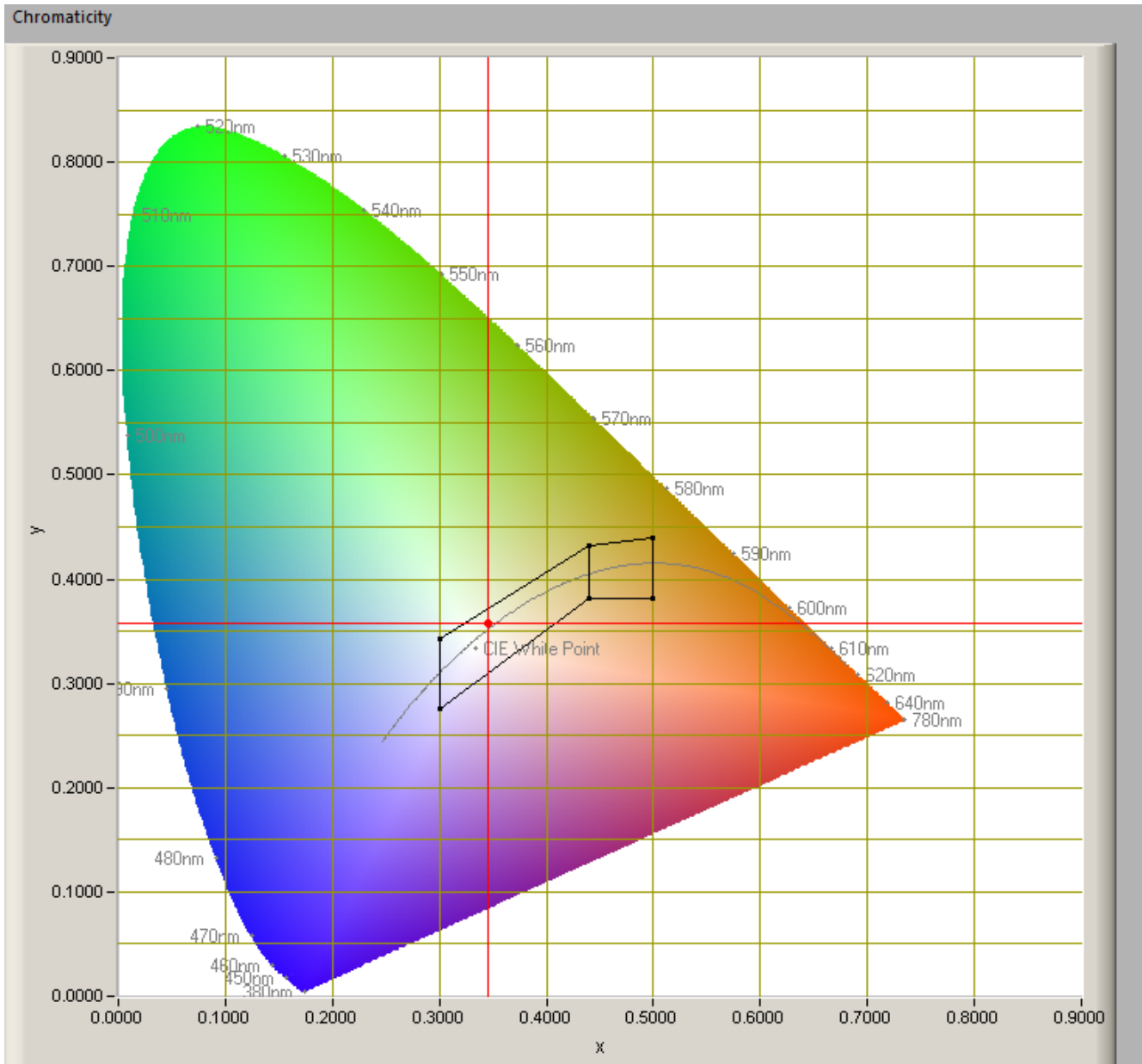


The power spectrum, sensitivity curves and resulting scotopic and photopic spectra (spectra energy content defined at 1 m distance).

The S/P ratio of the light coming from this lamp is 2.0.

Lamp measurement report - 9 Sep 2021

Chromaticity diagram



The chromaticity space and the position of the lamp's color coordinates in it.

The point of the light in this diagram is inside the area indicated with class A. The areas A and B indicate areas for signal lamps.

The color coordinates are $x=0.3455$ and $y=0.3573$.

Lamp measurement report - 9 Sep 2021

Color Rendering Index (CRI) or also Ra

Herewith the image showing the CRI as well as how well different colors are represented (rendered). The higher the number, the better the resemblance with the color when a black body radiator would have been used (the sun, or an incandescent lamp)

Each color has an index Rx, and the first 8 indexes (R1 .. R8) are averaged to compute the Ra which is equivalent to the CRI.

☐ manual

Reference Illuminant

daylight

 CCT

5004

 K

Chromaticity Difference DC=

2.7E-3

R1= 82.8	R8= 66.3	R15= 76.6
R2= 91.2	R9= 8.4	
R3= 95.3	R10= 78.9	Ra
R4= 82.9	R11= 82.6	(mean value of R1 - R8)
R5= 83.5	R12= 65.7	<div>84.4</div>
R6= 87.2	R13= 85.4	
R7= 86.2	R14= 97.9	

CRI of the light of this lightbulb.

This value of 84 indicates how well the light of this lamp can render well a set of reference colors, this in comparison with the light of a reference source (for color temperatures 5000K a black radiator is used as reference and for color temperatures 5000K the sun or the light outside during the day).

The value of 84 is bigger than the value of 80 that is considered as a minimum for working areas in general.

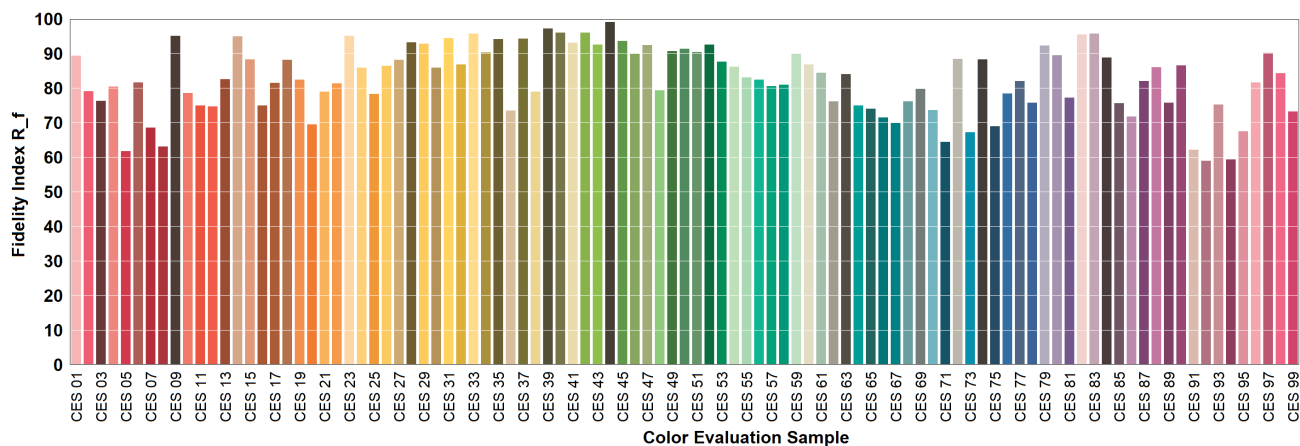
Note: the chromaticity difference is 0.0027 and indicates the distance to the Planckian Locus. There is a value mentioned of max 5.4E-3 in section 5.3 of CIE 13.3-1995 however no further explanation of it.

An other reference with signal lights as a reference is given in the chromaticity diagram.

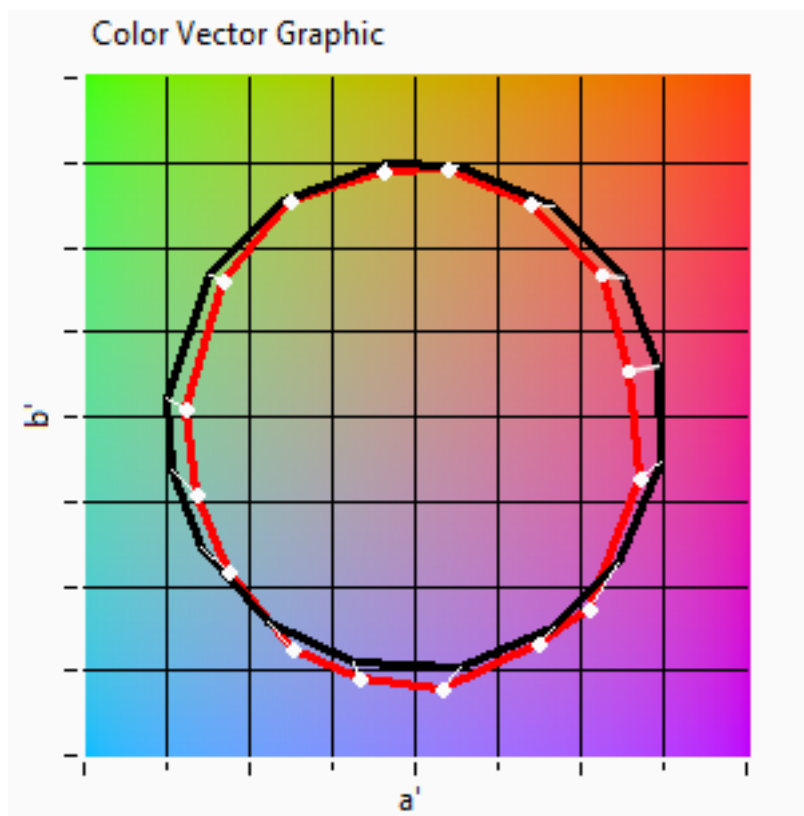
Lamp measurement report - 9 Sep 2021

Color quality scale TM-30-15

TM-30-15 is an improved indicator (over CRI) of how well colors are rendered.
TM30-15 R_f = 83, R_g = 94.



TM-30-15-values for 99 samples for the light of this light bulb. The closer the value for a testcolor comes to 100, the more its rendition resembles that of a reference lightsource.

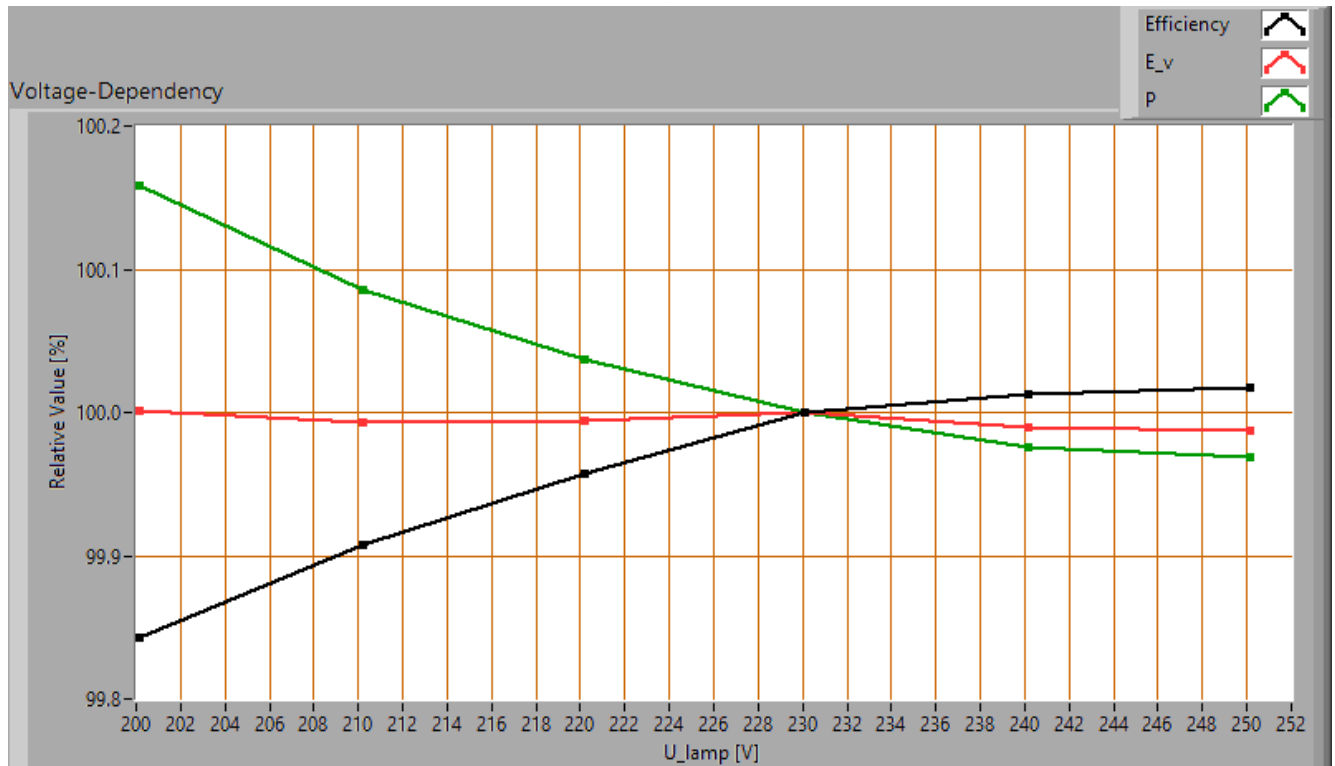


Graphical view of averaged color points for this light bulb compared to a reference source with the same color temperature.

Lamp measurement report - 9 Sep 2021

Voltage dependency

The dependency of a number of lamp parameters on the lamp voltage is determined. For this, the lamp voltage has been varied and its effect on the following light bulb parameters measured: illuminance E_v [lx], the lamp power P [W] and the luminous efficacy [lm/W] (this latter is estimated here by dividing the found E_v value by P).



Lamp voltage dependencies of certain light bulb parameters

There is no (significant) dependency of the illuminance when the power voltage varies between 200 - 250 V .

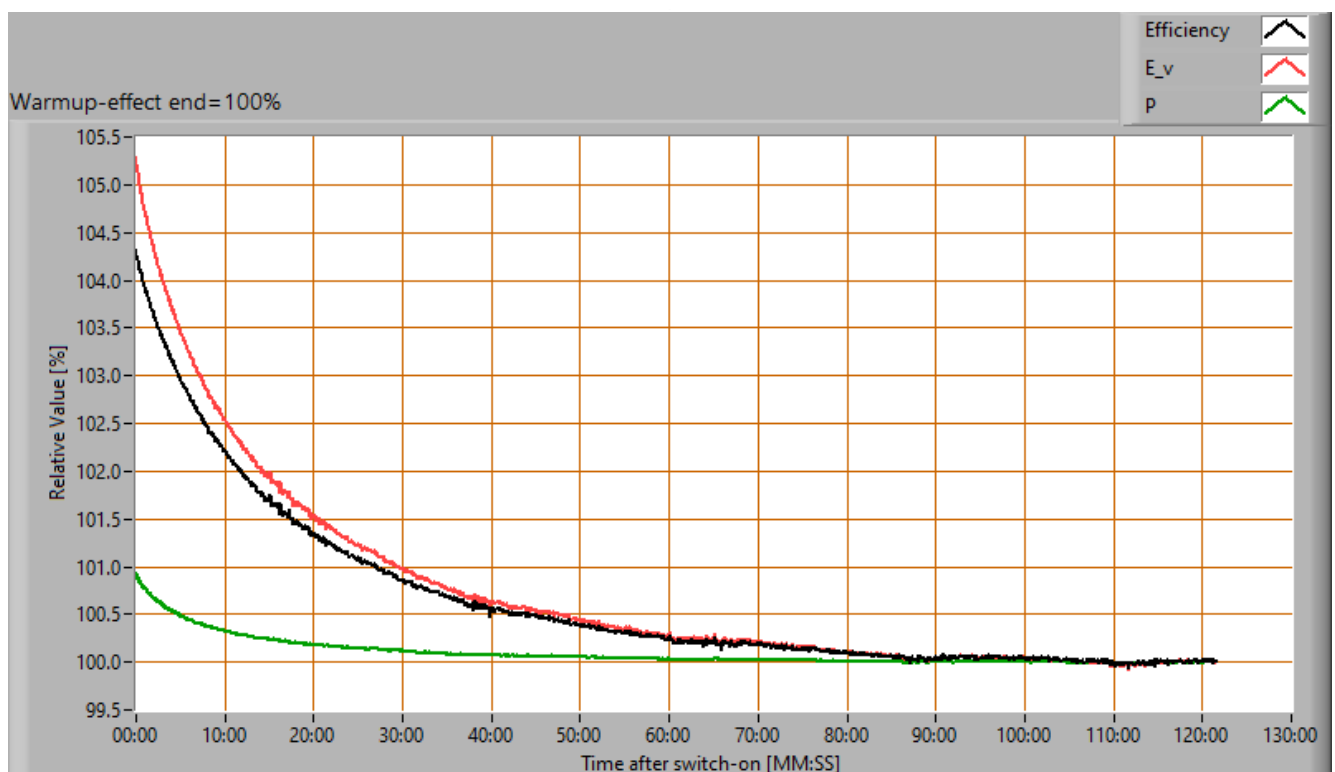
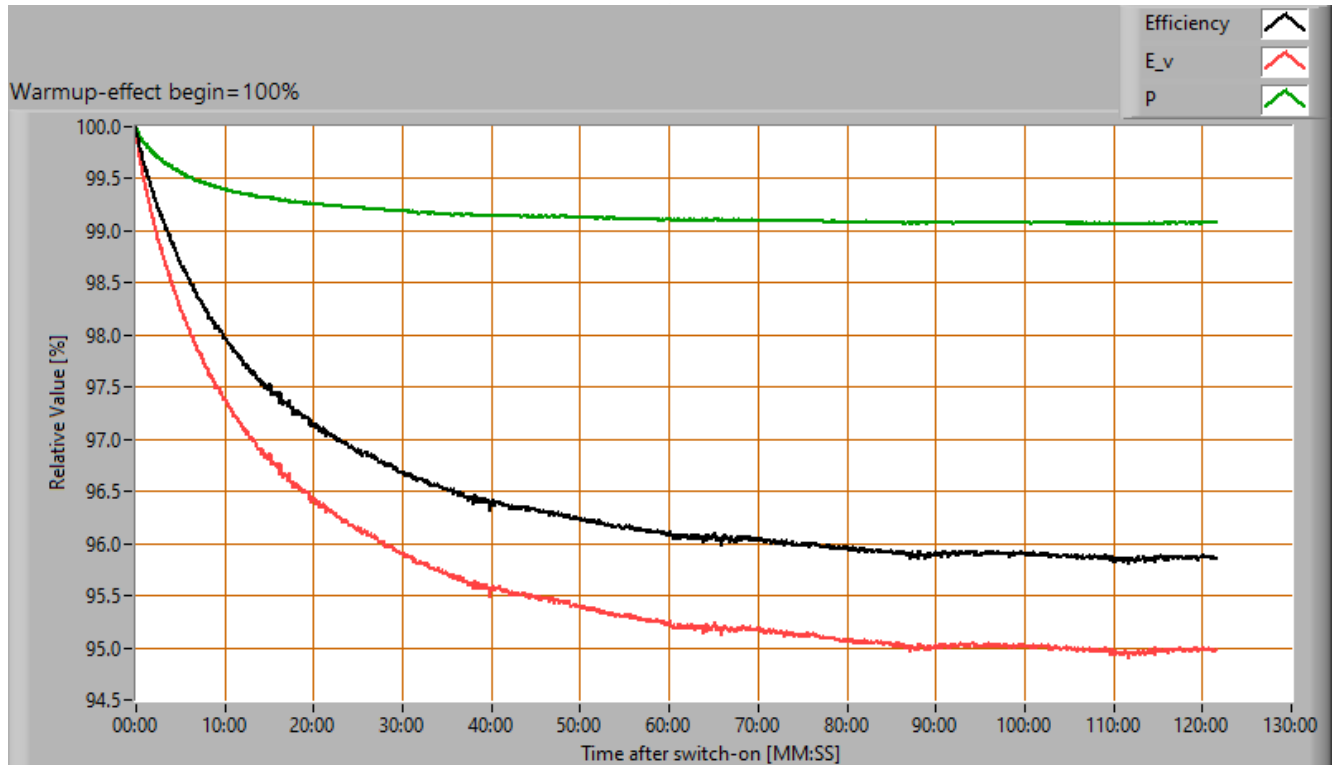
There is no (significant) dependency of the consumed power when the power voltage varies between 200 - 250 V .

When the voltage varies abruptly with + or - 5 V then this results in a variation of the illuminance of maximally 0.0 %. This difference in illuminance is not visible (when it occurs abruptly).

Lamp measurement report - 9 Sep 2021

Warm up effects

After switch on of a cold lamp, the effect of heating up of the lamp is measured on illuminance E_v [lx], the lamp power P [W] and the luminous efficacy [lm/W].



Effect of warming up on different light bulb parameters. In the first graph the 100 % level is put at begin, and in the last graph the 100 % level is put at the end.

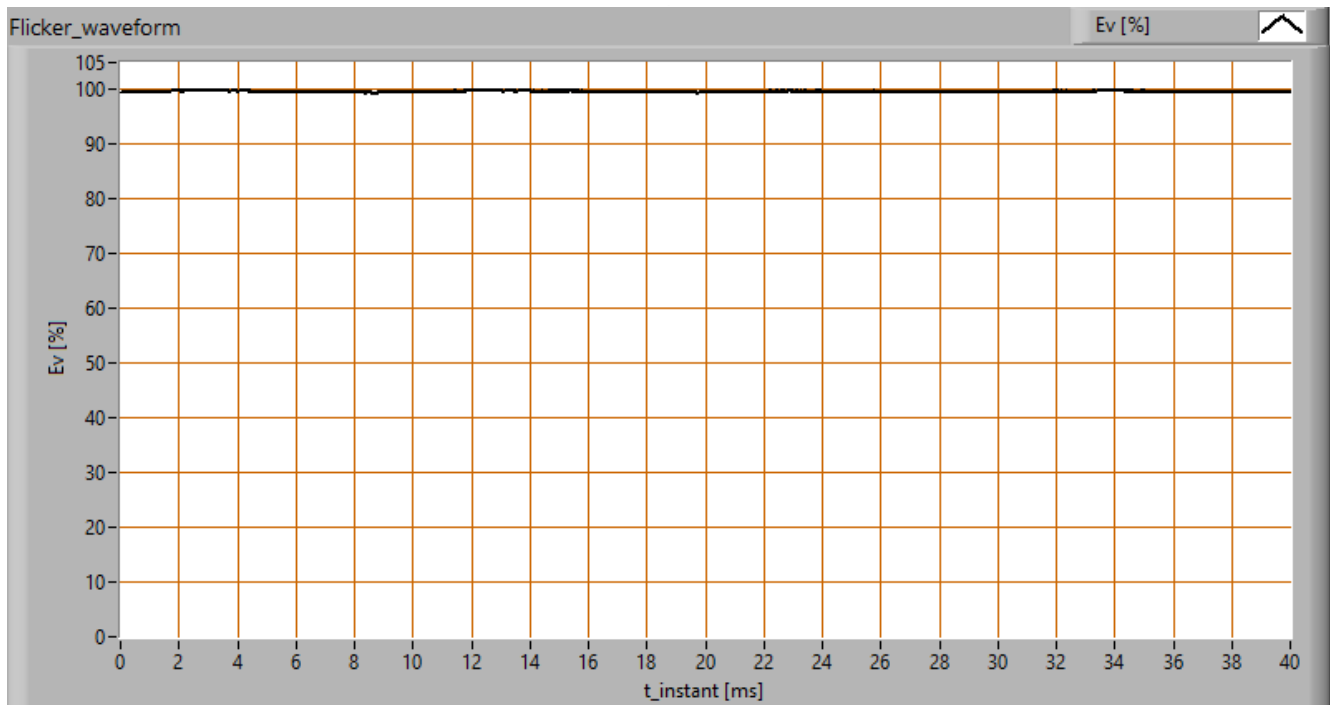
Lamp measurement report - 9 Sep 2021

During the warmup time the illuminance varies during 28 minutes and decreases with 5 %. During the warmup time the power doesn't vary significantly (5 %).

The variation in efficacy (calculated as indication by simply dividing the illuminance by the power) during the warming up is -4 %. A very high negative value indicates a significant decrease for instance due to heating up of the lamp (decrease of lifetime).

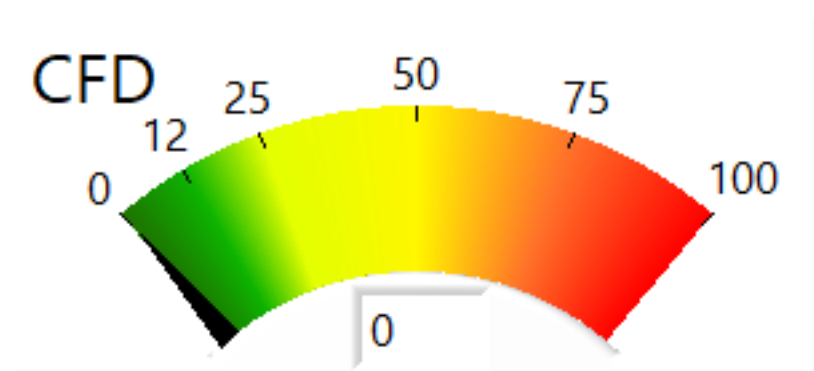
Measure of flickering

An analysis is done on the measure of flickering of the light output by this light bulb.



The measure of fast illuminance variation of the light of the light bulb

parameter	value	unit
Flicker frequency	98.9	Hz
Illuminance modulation index	0	%
Flicker index	0.000	[-]
SVM	0.0	[-]
Compact Flicker Degree	0	%



The illuminance modulation index is computed as: $(\max_Ev - \min_Ev) / (\max_Ev + \min_Ev)$.

Lamp measurement report - 9 Sep 2021

Melanopic effect

The melanopic effect shows the level of impact the light of this lamp can have on the day-night rhythm of human beings (as well as the suppression of melatonin production). The important parameters (according to norm DIN SPEC 5031-100:2015-08):

melanopic effect factor	0.700
k_mel trans (25 years)	1.049
k_mel trans (32 years)	1.000
k_mel trans (50 years)	0.841
k_mel trans(75 years)	0.598
k_mel trans(90 years)	0.467
k_pupil(25 years)	1.088
k_pupil(32 years)	1.000
k_pupil(50 years)	0.792
k_pupil(75 years)	0.543
k_pupil(90 years)	0.416

Lamp measurement report - 9 Sep 2021

Circadian Stimulus (CS)

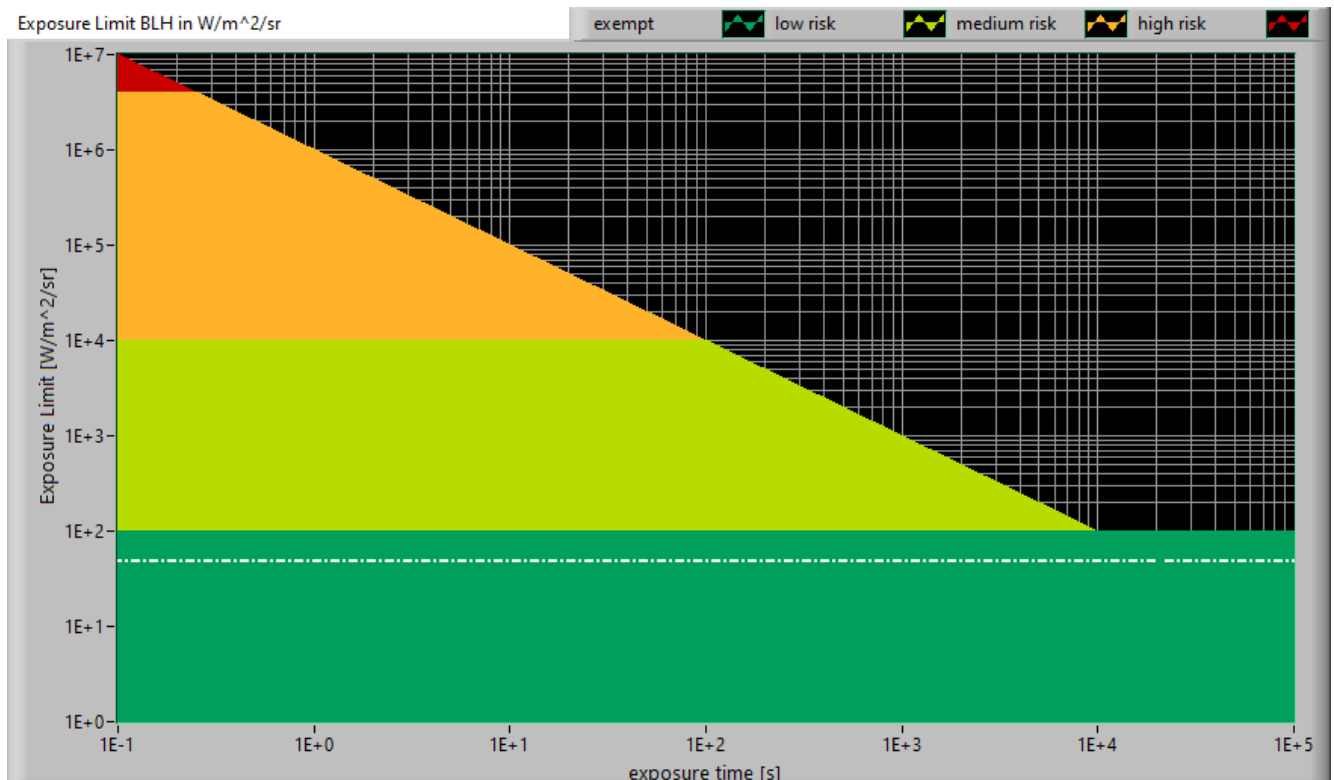
The circadian stimulus indicates the degree of influence that the light of this lamp has on the human circadian rhythm. In addition to the melanopic effect of Ganglion cells, the contributions of S-cones and rods are also included. A CS value of 0.1 has hardly any effect and a value > 0.3 has an effect (0.7 is the maximum, saturated, value). The CS value depends on the spectrum of the light and also on the amount of it (received on the eye).

Ev [lux]	CL__A	CS
20.0	19.2	0.03
30.0	28.8	0.04
50.0	48.1	0.07
75.0	72.3	0.10
100.0	96.7	0.13
150.0	145.6	0.19
300.0	294.9	0.31
500.0	499.5	0.41
750.0	763.7	0.49
1000.0	1037.1	0.54
1500.0	1609.6	0.59
2000.0	2214.0	0.62

Lamp measurement report - 9 Sep 2021

Blue Light Hazard

The amount of blue light and the harm it can cause on the retina has been determined. Herewith the results.



The level of blue light of this lamp related to the exposure limit and the different classification areas.

L_lum0 [mm]	160	Dimension of brightest part of lamp in C0-C180 direction.
L_lum90 [mm]	315	Dimension of brightest part of lamp in C90-C270 direction.
SSD_500lx [mm]	8895	Calculated distance where $E_v = 500 \text{ lux}$. This computation is valid when it is in the far field of the lamp. Note: if this value 200 mm then the distance of 200 mm is taken as proposed in the norm IEC 62471:2006.
Start of far field [mm]	1767	Minimum distance at which the lamp can be seen as a point source. In this area the E_v is linearly dependent from $(1/\text{distance})^2$.
300-350 nm values stuffed with 0s	no	In the event OliNo has measured with a SpB1211 spectrometer without UV option then the irradiance data of 300-349 nm is missing. For lamps where there is already no energy content near 350 nm, the values 300-349 can also be set at zero then.
alpha_C0-C180 [rad]	0.100	(Apparent) source angle in C0-C180 direction.
alpha_C90-C270 [rad]	0.100	(Apparent) source angle in C90-C270 direction.

Lamp measurement report - 9 Sep 2021

alpha_AVG [rad]	0.100	Average (apparent) source angle. If average ≥ 0.011 rad then the exposure limit is computed with radiance L_b . Otherwise with irradiance E_b .
Exposure value [$\text{W}/\text{m}^2/\text{sr}$]	4.76E+1	Blue Light Hazard value for this lamp, measured straight underneath the lamp. Computation is referenced to L_b .
Blue Light Hazard risk group	0	0=exempt, 1=low, 2 = moderate, 3=high risk.

Extra



Lamp measurement report - 9 Sep 2021



Additional photos.

Disclaimer

The information in this OliNo report is created with the utmost care. Despite this, the information could contain inaccuracies. OliNo cannot be held liable in this instance nor can the data in this report be legally binding.

We strive to adhere to all of the conditions of any copyright holder in the publication of any illustration/article or item. In the event that we unintentionally violate said copyright holder's conditions in our articles, we kindly ask to be contacted here at OliNo so that we can resolve any disputes, issues or misunderstandings.

License

It is permitted ONLY to use or publish this report in its entirety and in unaltered form via internet or other digital or written media in any form. To guarantee the reliability and accuracy of the report, it is strictly prohibited to change or alter parts of the report and/or republish it in a modified content.