

**Lamp measurement report – 2 June 2009 for Line Lite  
International BV**

**Line Lite International BV PC-2423N-1000**





## Lamp measurement report – 2 June 2009 for Line Lite International BV

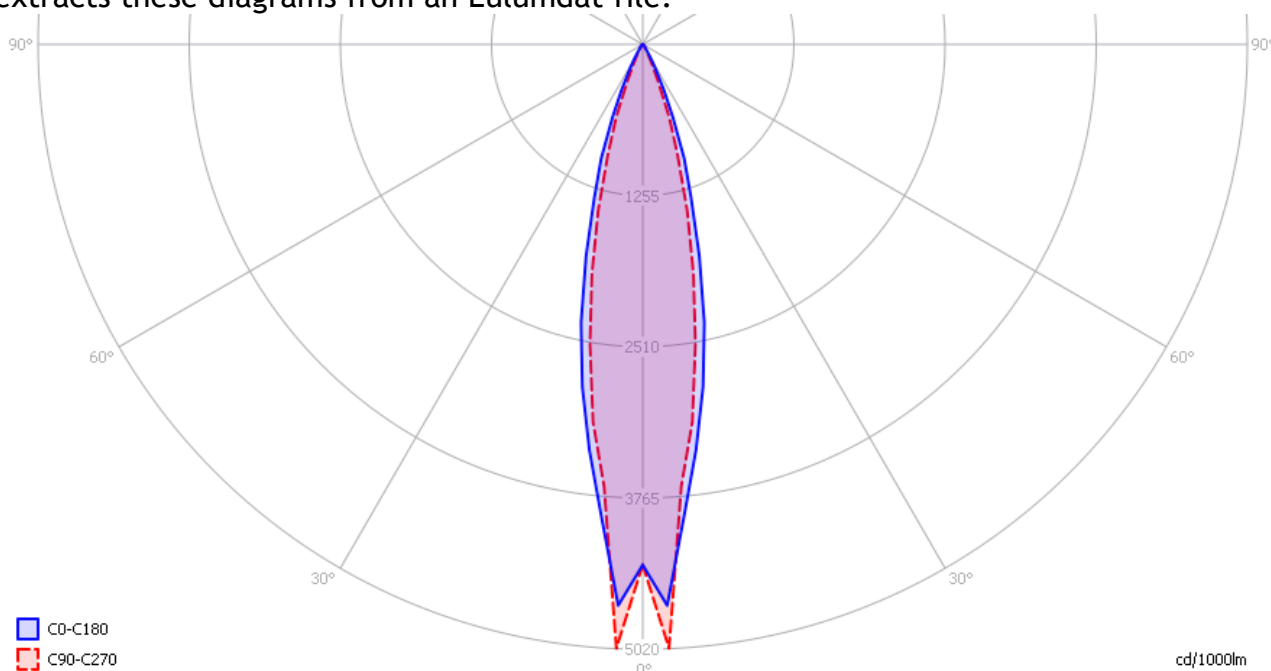
### Summary measurement data

parameter	meas. result	remark
Color temperature	4256 K	Neutral white
Luminous intensity $I_v$	4008 Cd	
Beam angle	25 deg	
Power P	26.2 W	
Power Factor	1.0	For every 1 kWh net power consumed, there has been 0.0 kVAhr for reactive power. Note that a 24 V DC power was used, therefore the power factor equals 1.
Luminous flux	928 lm	
Luminous efficacy	35 lm/W	
CRI_Ra	71	Color Rendering Index.
Coordinates chromaticity diagram	x=0.3732 and y=0.3848	
Fitting	24VDC	This is a DC voltage.
L x W x H external dimensions	1010x55x25 mm	External dimensions of the led bar.
L x W luminous area	987 x 31 mm	Dimensions of the luminous area (used in Eulumdat file). This is equal to the size of the opening of the glass on top of the led bar. Through this glass the leds output their light.
General remarks		<p>The ambient temperature during the whole set of measurements was 26-26.5 deg C.</p> <p>Warm up effect: A strange effect occurred during warmup: after 30 minutes the power consumed dropped, as well as the illuminance and the color temperature. Not counting this effect, then the illuminance decreases with 13%.</p> <p>Voltage dependency: the illuminance and power consumption are almost independent on the voltage. Except when the voltage drops below 21 V.</p>

## Lamp measurement report – 2 June 2009 for Line Lite International BV

### Eulumdat light diagram

An interesting graph is the light diagram, indicating the intensity in the C0-C180 and the C90-C270 plane. This light diagram below comes from the program Qlumedit, that extracts these diagrams from an Eulumdat file.



*The light diagram giving the radiation pattern.*

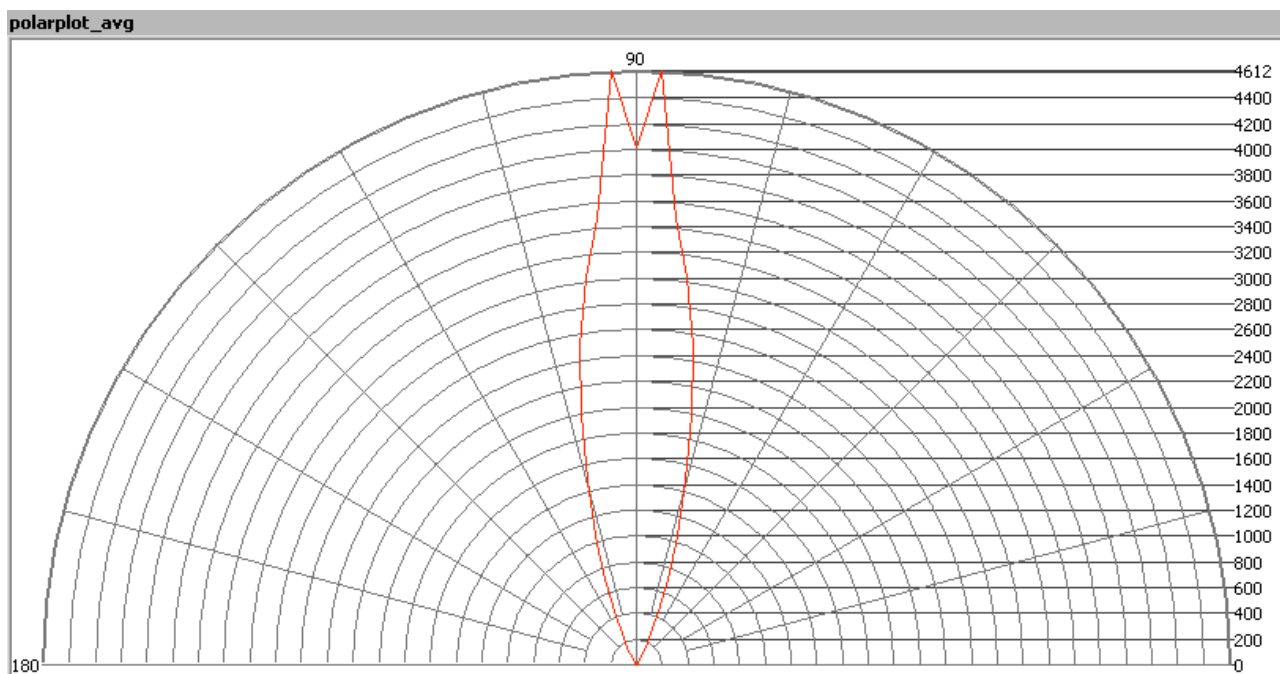
It indicates the luminous intensity around the light bulb. The C0-C180 plane is along the length of the led bar and the C90-C270 is perpendicular to that. The bundle is very small (focused). There is a little drop of light level at 0 degrees (straight underneath the led bar).

The unit is Cd/1000lm, meaning the intensity in Cd assuming there would be 1000 lumen in the measured light bulb. This enables comparing different types of light bulbs.

### Illuminance $E_v$ at 1 m distance, or luminous intensity $I_v$

Herewith the plot of the *averaged* luminous intensity  $I_v$  as a function of the inclination angle with the light bulb.

## Lamp measurement report – 2 June 2009 for Line Lite International BV

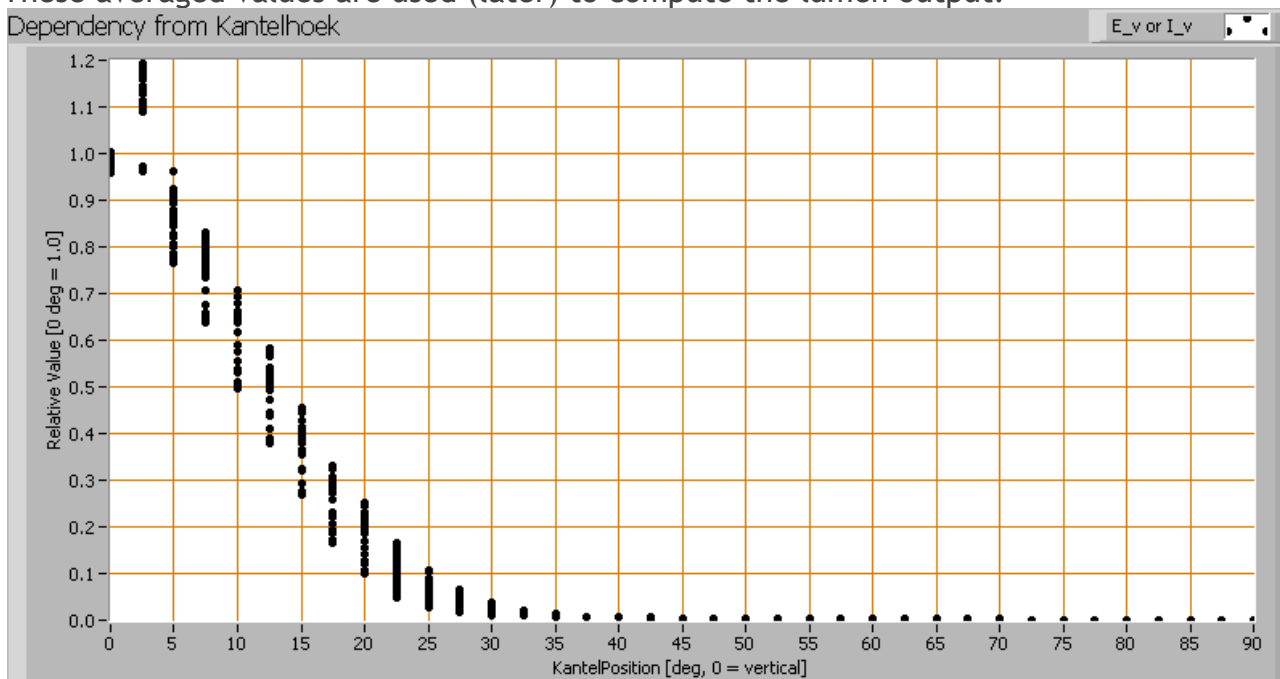


*The radiation pattern of the light bulb.*

This radiation pattern is the average of the light output of the light diagram given earlier. Also, in this graph the luminous intensity is given in Cd.

These averaged values are used (later) to compute the lumen output.

Dependency from Kantelhoek





## Lamp measurement report – 2 June 2009 for Line Lite International BV

*Intensity data of every measured turn angle at each inclination angle.*

This plot shows per inclination angle the intensity measurement results for each turn angle at that inclination angle. There are little differences in illuminance values for different turn angles. However for further calculations the averaged values will be used. When using the average values per inclination angle, the beam angle can be computed, being 25 degrees.

### Luminous flux

With the averaged illuminance data at 1 m distance, taken from the graph showing the averaged radiation pattern, it is possible to compute the luminous flux.

The result of this computation for this light spot is a luminous flux of 928 lm.

### Luminous efficacy

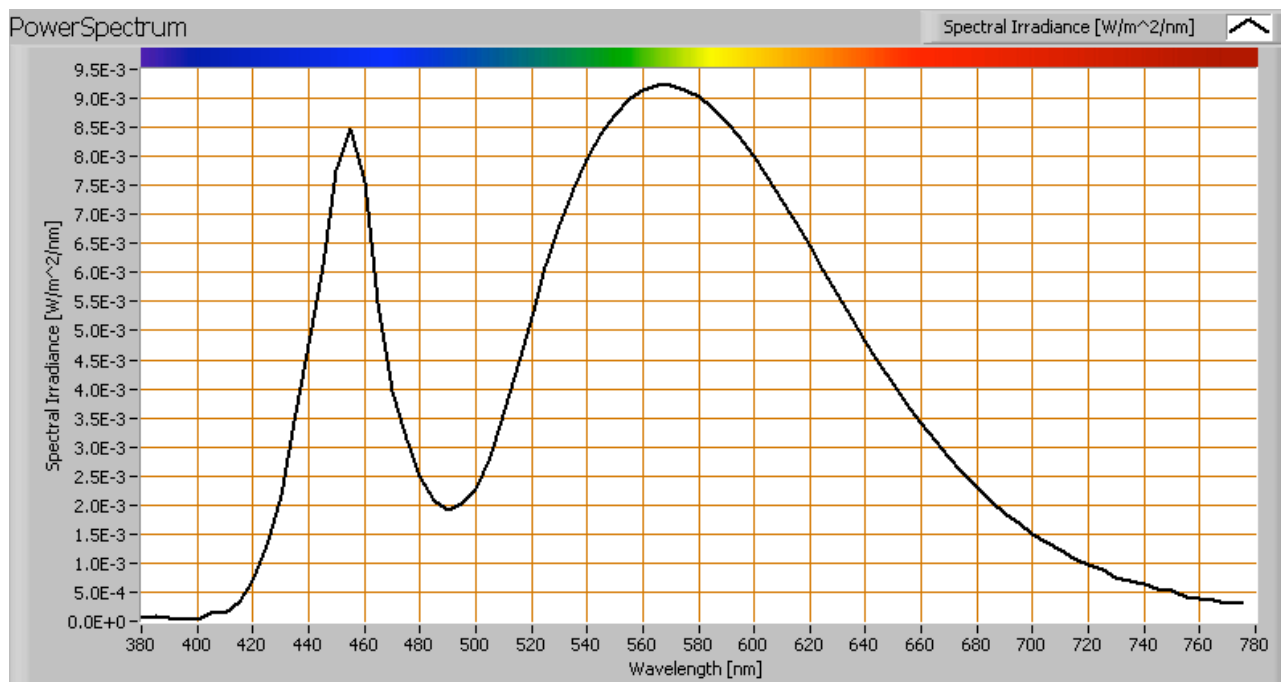
The luminous flux being 928 lm, and the power of the lightbulb being 26.2 W, yields a luminous efficacy of 35 lm/W.

A power factor of 1 (since DC voltage is used) means that for every 1 kWh net power consumed, a reactive component of 0.0 kVAr was needed.

Light bulb voltage	24 VDC
Light bulb current	1.09 A
Power P	26.2 W
Apparent power S	26.2 VA
Power factor	1.0

## Lamp measurement report – 2 June 2009 for Line Lite International BV

### Color temperature and Spectral power distribution

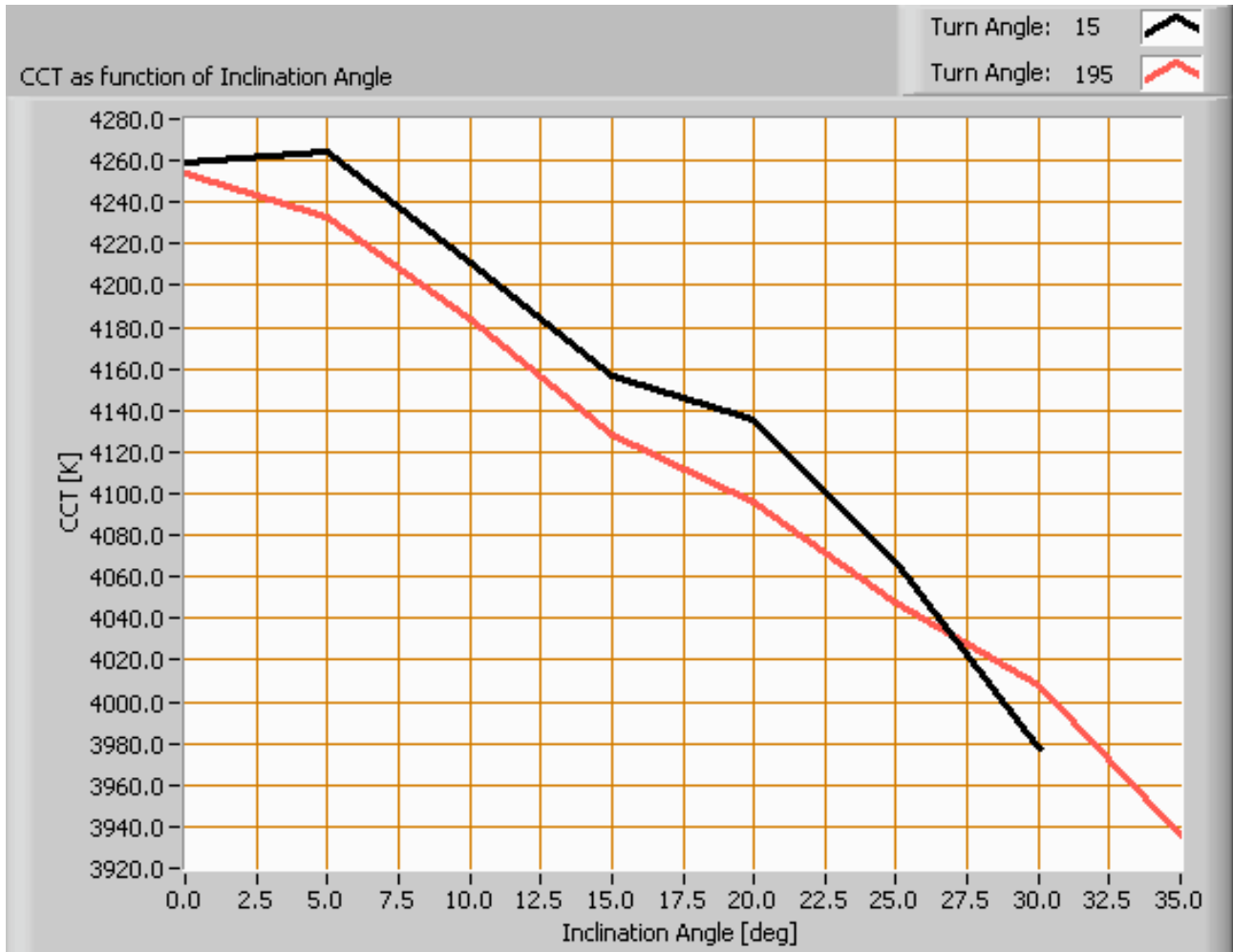


*The spectral power distribution of this light bulb.*

The measured color temperature is about 4250 K which is neutral white.

This color temperature is measured straight underneath the light bulb. Below a graph showing the color temperature for different inclination angles.

## Lamp measurement report – 2 June 2009 for Line Lite International BV



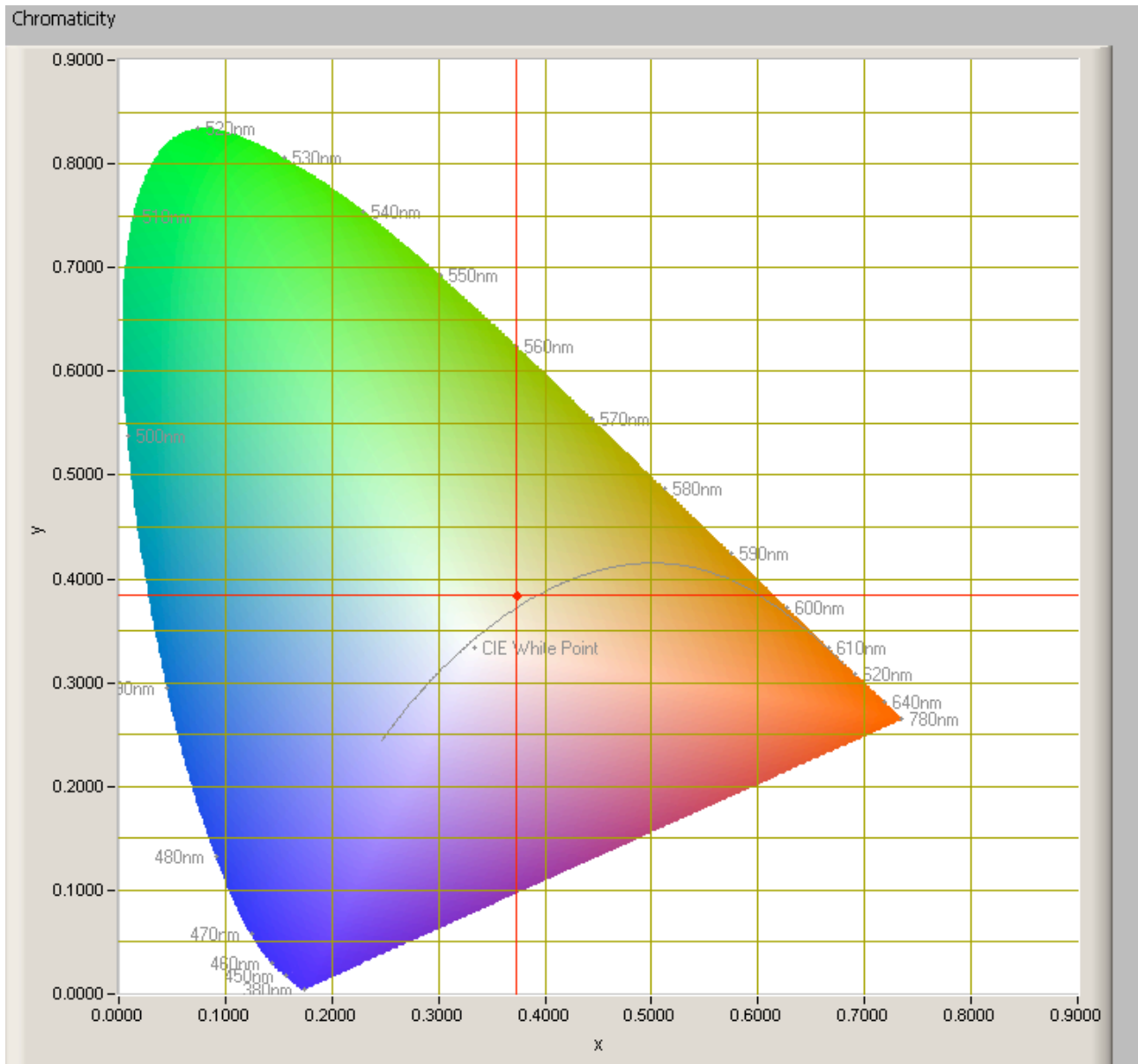
*Color temperature as a function of inclination angle.*

The color temperature is given for inclination angles up to 30 degrees, since at higher angles there is almost no light output anymore.

The value remains constant within 7 %.

## Lamp measurement report – 2 June 2009 for Line Lite International BV

### Chromaticity diagram



*The chromaticity space and the position of the lamp's color coordinates in it.*

The light coming from this lamp is at a small distance from the Planckian Locus (the black path in the graph).

Its coordinates are  $x=0.3732$  and  $y=0.3848$ .

## Lamp measurement report – 2 June 2009 for Line Lite International BV

### Color Rendering Index (CRI) or also Ra

Herewith the image showing the CRI as well as how well different colors are represented (rendered). The higher the number, the better the resemblance with the color when a black body radiator would have been used (the sun, or an incandescent lamp).

Each color has an index Rx, and the first 8 indexes (R1 .. R8) are averaged to compute the Ra which is equivalent to the CRI.

☐ manual

Reference Illuminant: Planckian radiator CCT: 4256 K

Chromaticity Difference DC= 5.90E-3

R1= 66.7	R8= 55.2	<b>Ra</b> (mean value of R1 - R8) <b>71.13</b>
R2= 78.05	R9= -25.9	
R3= 85	R10= 45.75	
R4= 67.35	R11= 58.55	
R5= 65.5	R12= 35.5	
R6= 66.95	R13= 68.65	
R7= 84.2	R14= 91.2	

*CRI of the light of this lightbulb.*

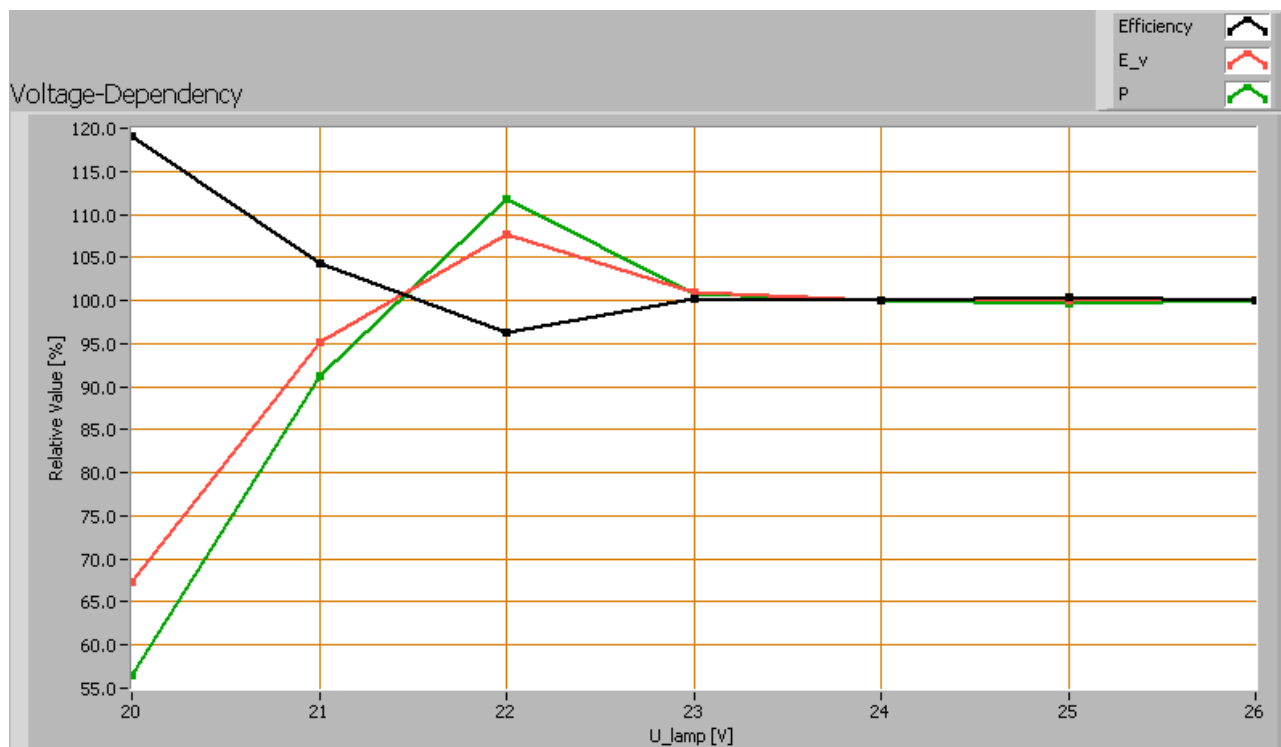
The value of 71 is lower than 80 which is considered a minimum value for indoor usage.

Note: the chromaticity difference is 0.0059 indicates the distance to the Planckian Locus. Its value is higher than 0.0054, which means that the calculated CRI result is not meaningful.

### Voltage dependency

The dependency of a number of lamp parameters on the lamp voltage is determined. For this, the lamp voltage has been varied and its effect on the following lamp parameters measured: illuminance  $E_v$  [lx], the lamp power  $P$  [W] and the luminous efficacy [lm/W].

## Lamp measurement report – 2 June 2009 for Line Lite International BV



Lamp voltage dependencies of certain light bulb parameters, where the value at 24 V is taken as 100 %.

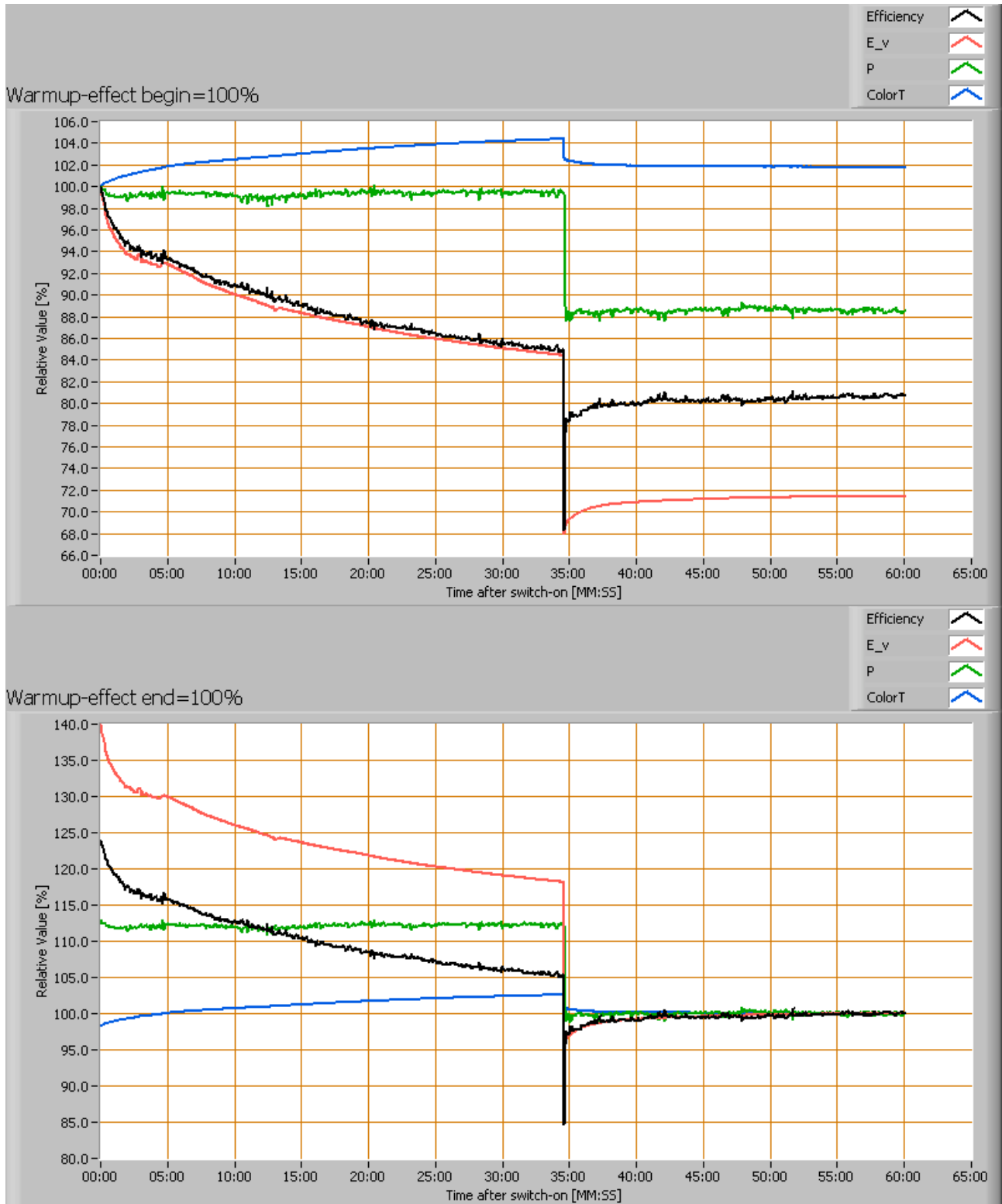
The consumed power and the illuminance vary insignificantly when the voltage varies between 21-26 V. It drops sharply below the 21 V.

When the voltage at 24 V varies with + and - 1 V, then the illuminance doesn't vary at all, so when abrupt voltage changes occur this effect is not visible in the illuminance output.

### Warm up effects

After switch on of a cold lamp, the effect of heating up of the lamp is measured on illuminance E<sub>v</sub> [lx], color temperature CT or correlated color temperature CCT [K], the lamp power P [W] and the luminous efficacy [lm/W].

## Lamp measurement report – 2 June 2009 for Line Lite International BV



## Lamp measurement report – 2 June 2009 for Line Lite International BV

*Effect of warming up on different light bulb parameters. At top the 100 % level is put at begin, and at bottom at the end.*

There is a sudden drop in values, after 33 minutes of warmup time. This is not understood.

Note that the voltage unit, converting the mains voltage from 230 V AC into 24 V DC, is included in this measurement. The readings for the illumination are significant and come from the led bar only. The readings for the power are the sum of the voltage unit and the led bar, so these values need not be considered.

The illumination decreases with 13 % (when the drop effect is excluded).

### Additional photo





## **Lamp measurement report – 2 June 2009 for Line Lite International BV**

*The led lense which is clear.*

### **Disclaimer**

The information in this OliNo report is created with the utmost care. Despite of this the information can have inaccuracies. OliNo cannot be held liable for the content of the information in this report nor for the consequences of its use. The data in this report is not legally binding.