

Lamp measurement report – 22 May 2010

InlineLED® Work Lamp type Trio-D60-230-50cm
by
Flowmagic



Photo courtesy by www.OliNo.org

Lamp measurement report – 22 May 2010

Summary measurement data


parameter	meas. result	remark
Color temperature	5013 K	Neutral white / cool white
Luminous intensity I_v	1180 Cd	Measured straight underneath the lamp
Illuminance modulation index	17 %	Measured straight underneath the lamp. Is a measure for the amount of flickering.
Beam angle	127 deg	127° for the C0-C180 plane (crossing length direction of the tubes) and 108° for the C90-C270 plane (length direction).
Power P	49.5 W	
Power Factor	0.96	For every 1 kWh net power consumed, there has been 0.3 kVAh for reactive power.
THD	15 %	Total Harmonic Distortion
Luminous flux	3952 Lm	
Luminous efficacy	80 Lm/W	
CRI_Ra	70	Color Rendering Index.
Coordinates chromaticity diagram	x=0.3464 and y=0.3624	
Fitting	230V	This Tube Light work lamp is connected directly to the grid voltage of 230 V AC.
PAR-value	10 $\mu\text{Mol/s/m}^2$	The number of photons seen by an average plant when it is lit by the light of this light bulb. Value valid at 1 m distance from light bulb.
PAR-photon efficacy	0.7 $\mu\text{Mol/s/W}_e$	The total emitted number of photons by this light, divided by its consumption in W. It indicates a kind of efficacy in generating photons.

Lamp measurement report – 22 May 2010

S/P ratio	1.7	This factor indicates the amount of times more efficient the light of this light bulb is perceived under scotopic circumstances (low environmental light level).
L x W x H external dimensions	517 x 194 x 133 mm	External dimensions of the lamp.
L x W x H luminous area	454 x 160 x 34 mm	Dimensions of the luminous area (used in Eulumdat file). This is the area around the transparent sides of the tube in the lamp.
General remarks		<p>The ambient temperature during the whole set of measurements was 24-24.5 deg C. The temperature on the alu strips close to the tubes get hottest, about 33 degrees hotter than ambient.</p> <p>Warm up effect: during the warm up time the illuminance decreases with about 5-6 % and the consumed power with 4-5 %.</p> <p>Voltage dependency: the power consumption and illuminance do not vary significantly when the voltage is varied from 200 - 250 V. An additional photo at the end.</p>

Lamp measurement report – 22 May 2010

Overview table

m.	Ø 50%		CO-180: 127° C90-270: 108° 	E (lux)	Luminaire Efficacy
	CO-180	C90-270			80 (lumens per Watt)
0.25	1	0.68		18874	Half-peak diam CO-180
0.5	2	1.37		4719	4 x diameter(m)
1	4	2.74		1180	Half-peak diam C90-270
1.5	6	4.11		524	2.74 x diameter(m)
3	12	8.22		131	Illuminance
4	15.99	10.96		74	1180 / distance ² (lux)
5	19.99	13.69		47	Total Output
					3952 (lumens)

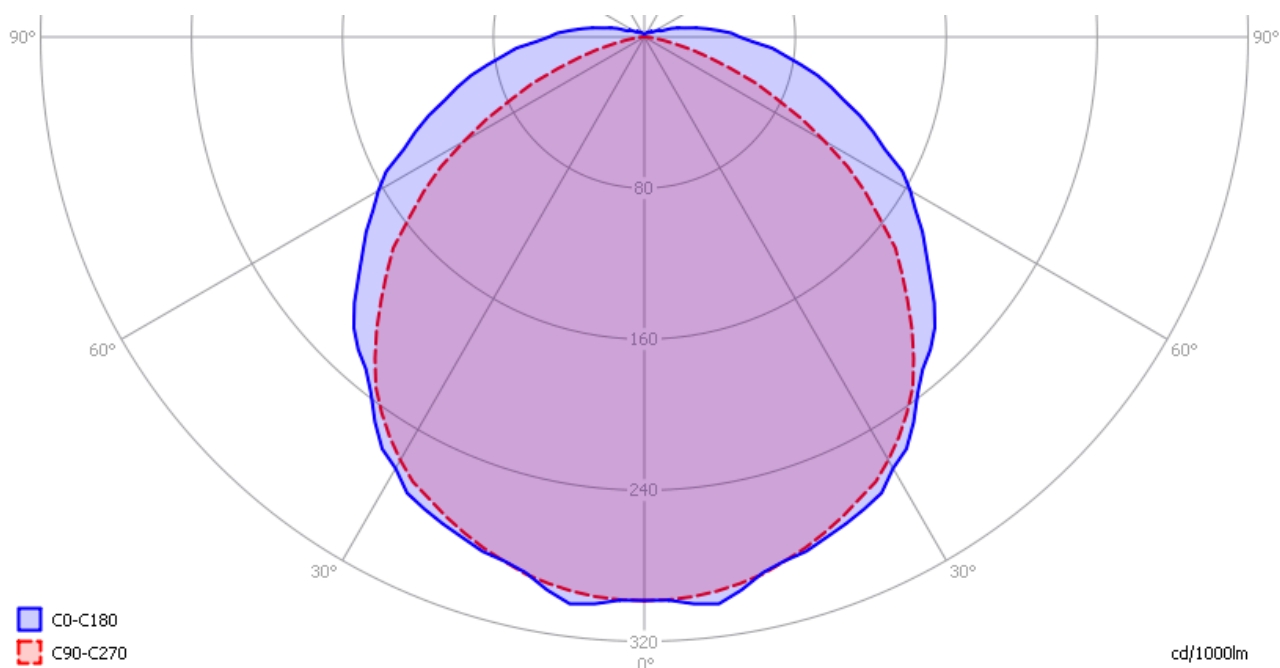
The overview table is explained on the OLiNo website.

Please note that this overview table makes use of calculations, use this data with care as explained on the OLiNo site. E (lux) values are not accurate, when within 5 x 480 mm (approx diagonal dimension) ≈ 2400 mm. Within this distance from the lamp, the measured lux values will be less than the computed values in this overview as the measurements are then within the near field of the lamp.

Eulumdat light diagram

This light diagram below comes from the program Qlumedit, that extracts these diagrams from an Eulumdat file. It is explained on the OLiNo site.

Lamp measurement report – 22 May 2010



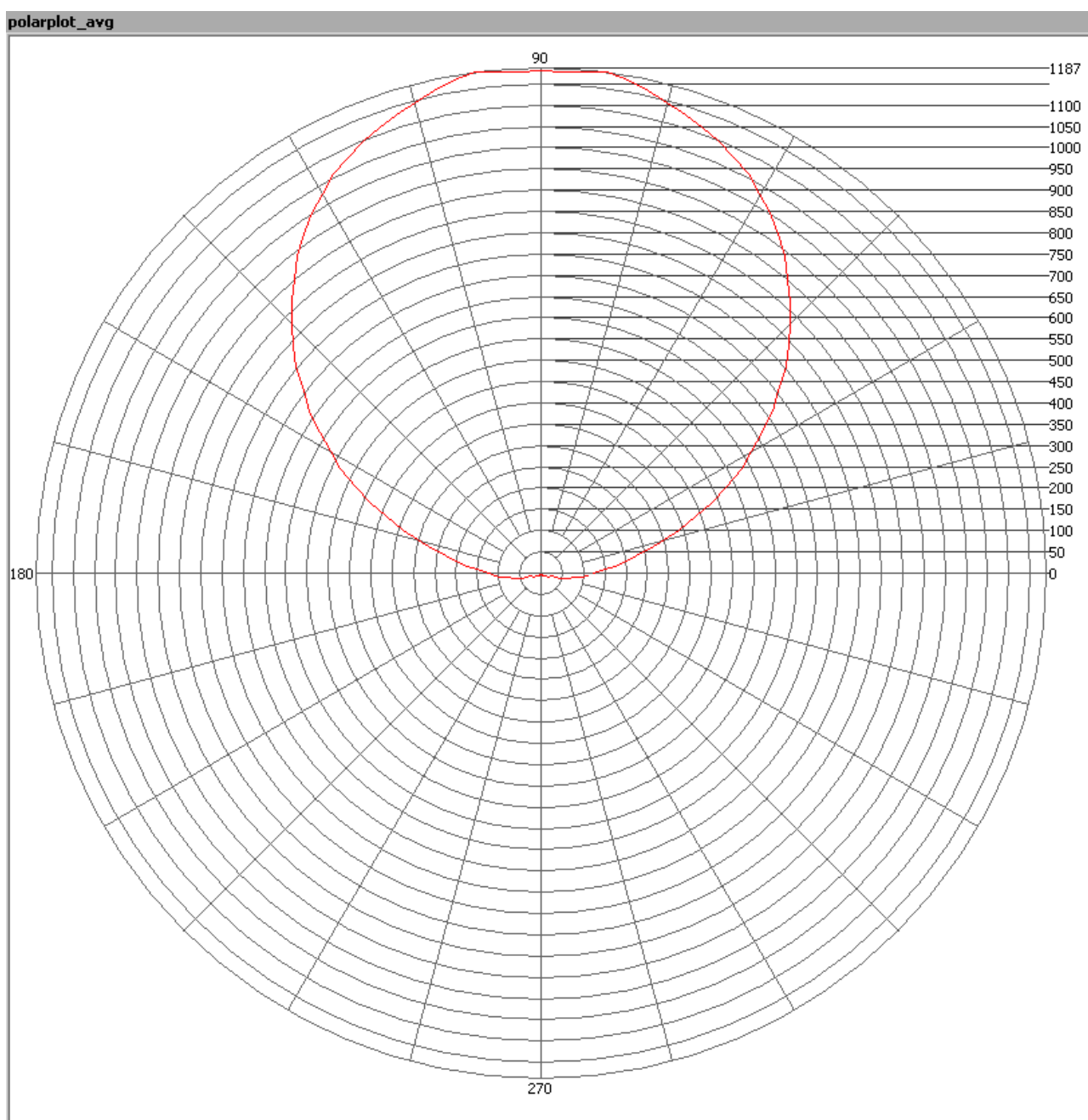
The light diagram giving the radiation pattern.

It indicates the luminous intensity around the light bulb. The direction or plane C0-C180 cuts the lamp in the direction crossing the length direction of the tubes, and the C90-C270 plane cuts the lamp in the length direction.

Illuminance E_v at 1 m distance, or luminous intensity I_v

Herewith the plot of the *averaged* luminous intensity I_v as a function of the inclination angle with the light bulb.

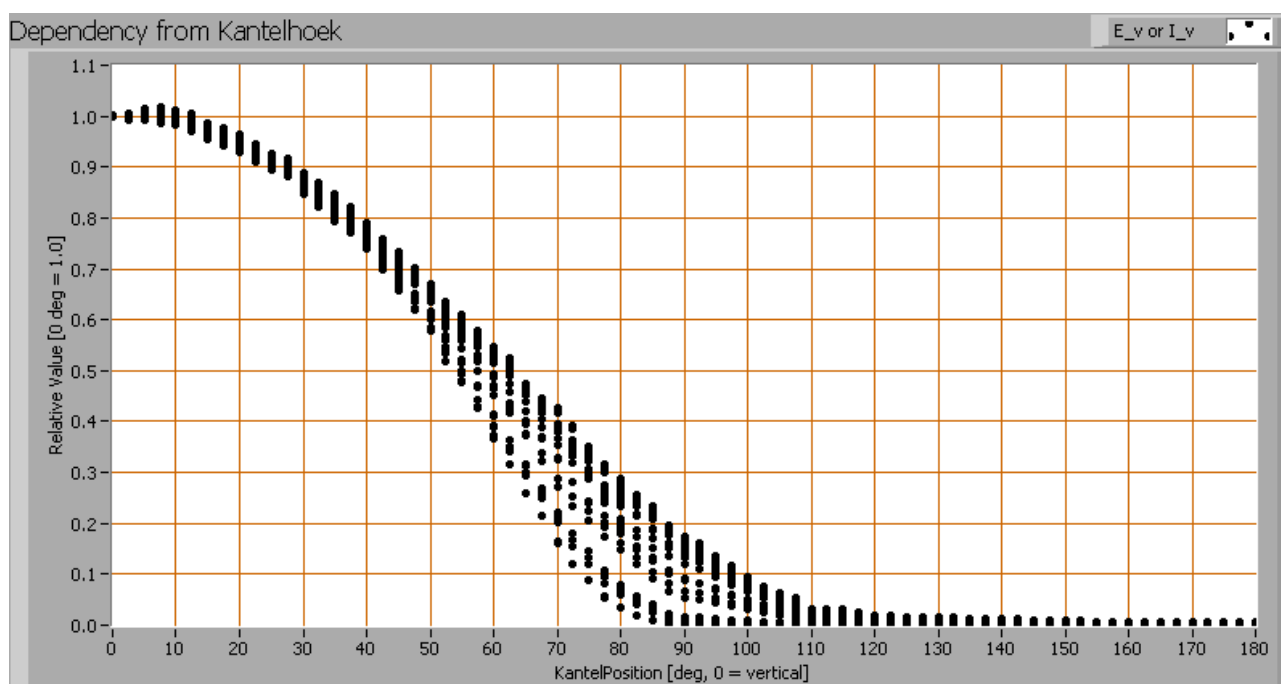
Lamp measurement report – 22 May 2010



The radiation pattern of the light bulb.

This radiation pattern is the average of the light output of the light diagram given earlier. Also, in this graph the luminous intensity is given in Cd. These averaged values are used (later) to compute the lumen output.

Lamp measurement report – 22 May 2010



Intensity data of every measured turn angle at each inclination angle.

This plot shows per inclination angle the intensity measurement results for each turn angle at that inclination angle. There normally are differences in illuminance values for different turn angles. However for further calculations the averaged values will be used. When using the average values per inclination angle, the beam angle can be computed, being 127° in the C0-C180 plane and 108° in the C90-C270 plane.

Luminous flux

With the averaged illuminance data at 1 m distance, taken from the graph showing the averaged radiation pattern, it is possible to compute the luminous flux. The result of this computation for this light spot is a luminous flux of 3952 Lm.

Luminous efficacy

The luminous flux being 3952 Lm, and the power of the light bulb being 49.5 W, yields a luminous efficacy of 80 Lm/W.

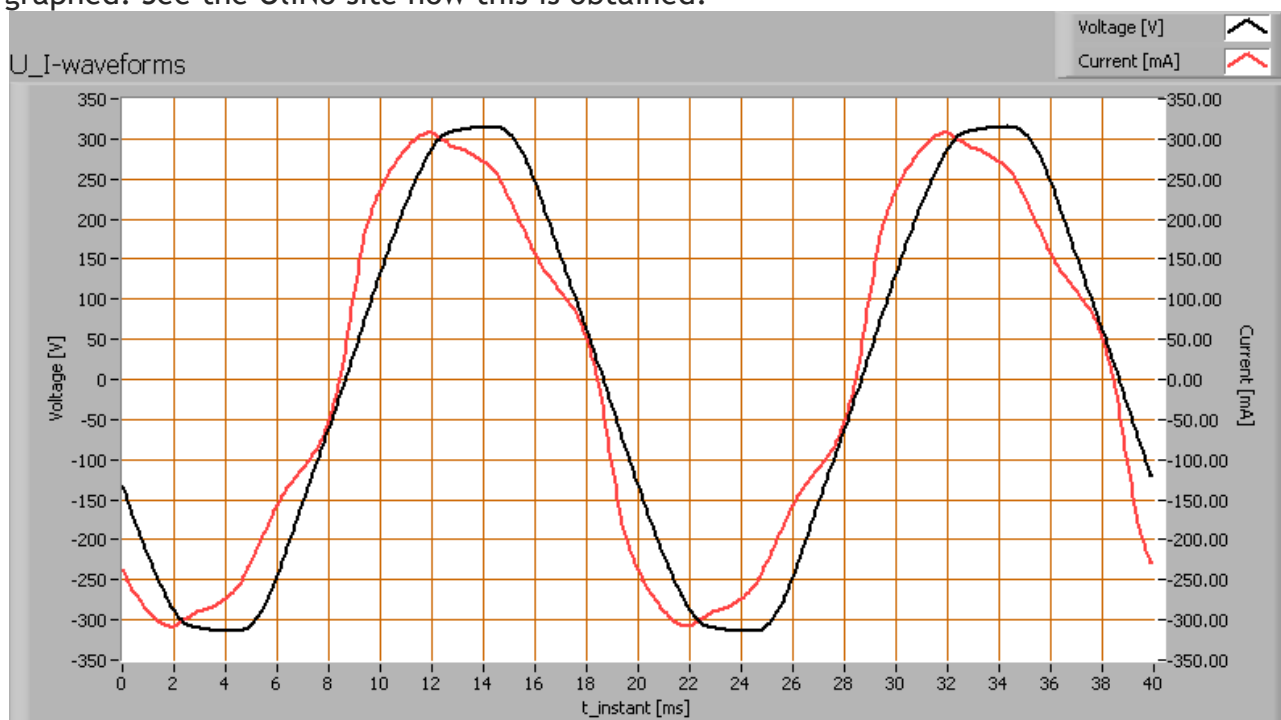
Lamp measurement report – 22 May 2010

Electrical properties

A power factor of 0.96 means that for every 1 kWh net power consumed, a reactive component of 0.3 kVAr was needed.

Lamp voltage	230 VAC
Lamp current	224 mA
Power P	49.5 W
Apparent power S	51.5 VA
Power factor	0.96

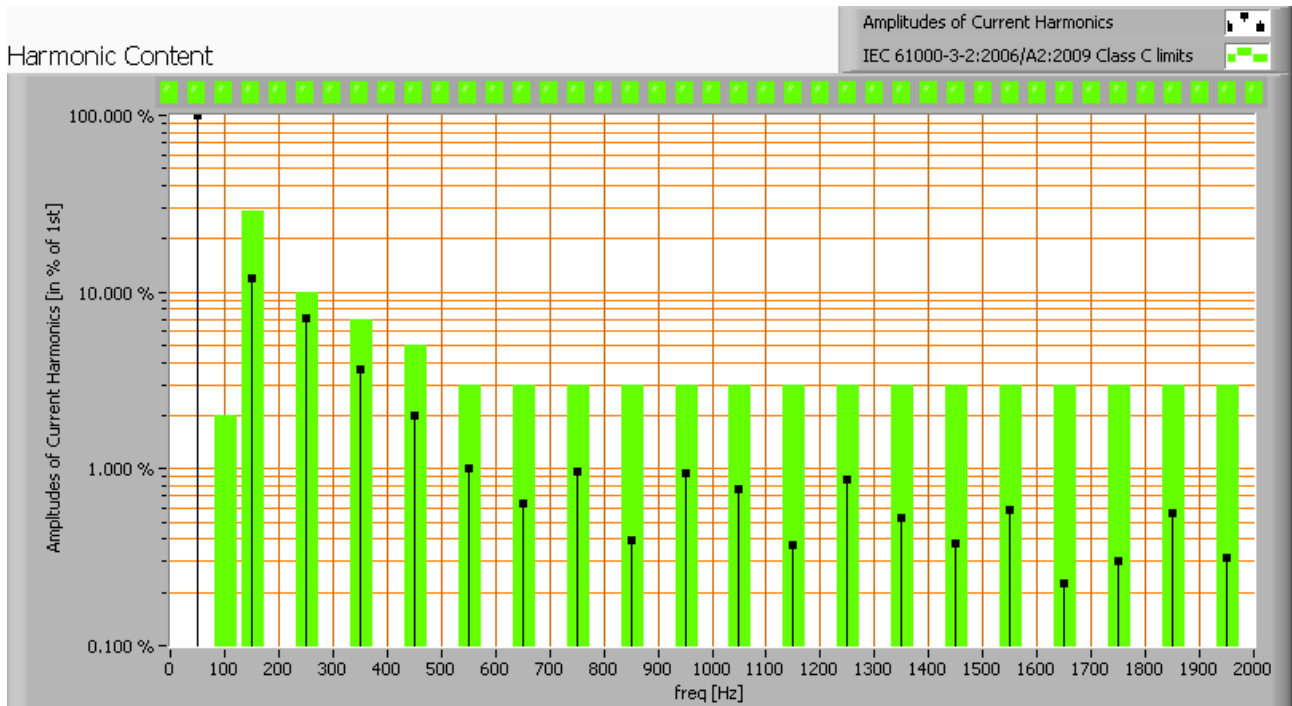
Of this light bulb the voltage across and the resulting current through it are measured and graphed. See the OLiNo site how this is obtained.



Voltage across and current through the lightbulb

This waveforms have been checked on requirements posed by the norm IEC 61000-3-2:2006 (including up to A2:2009). See also the explanation on the OLiNo website.

Lamp measurement report – 22 May 2010

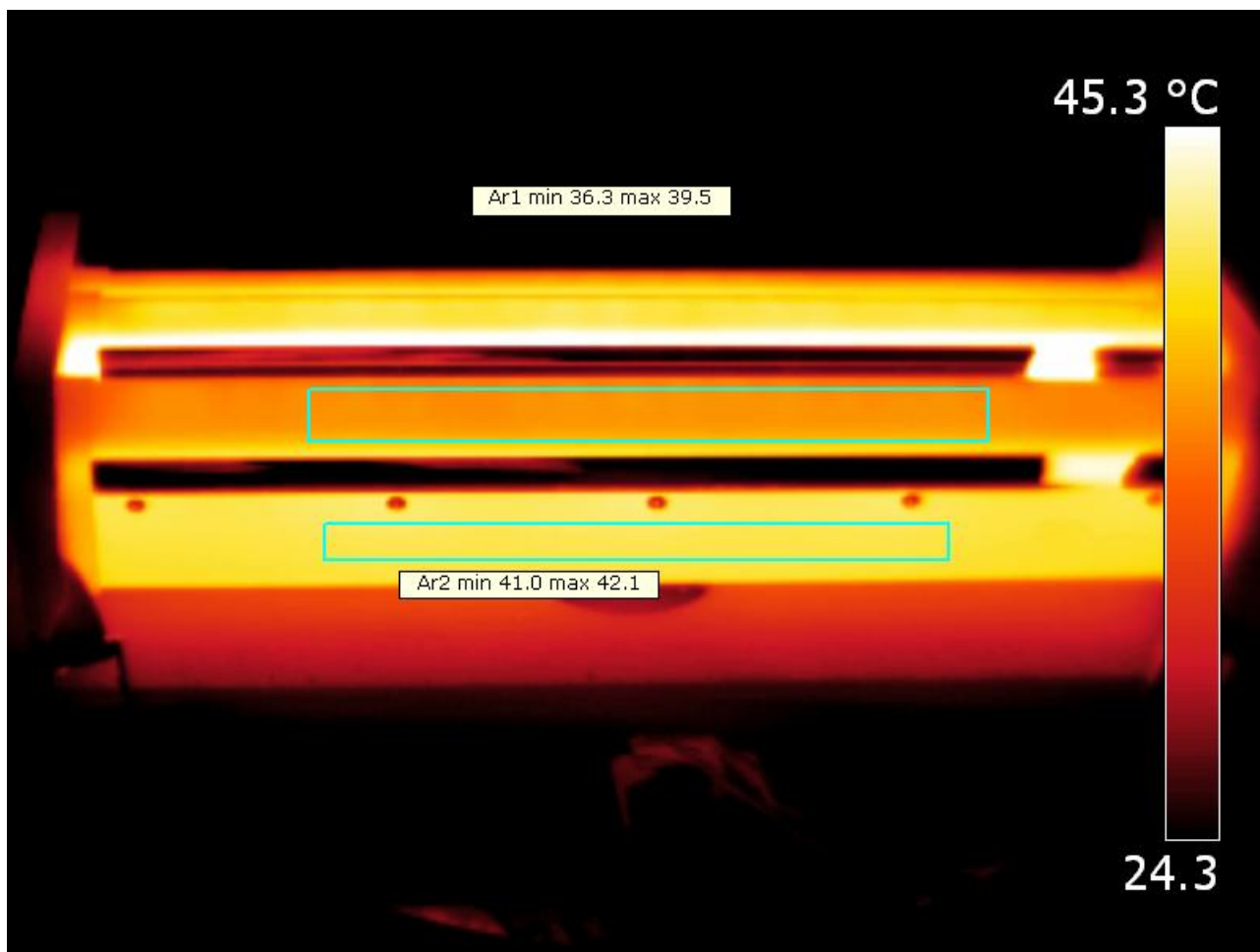


Harmonics in the current waveform and checked against IEC61000-3-2:2006

There are limits for the harmonics for lighting equipment > 25 W which are fulfilled.
The Total Harmonic Distortion of the current is computed as 15 %.

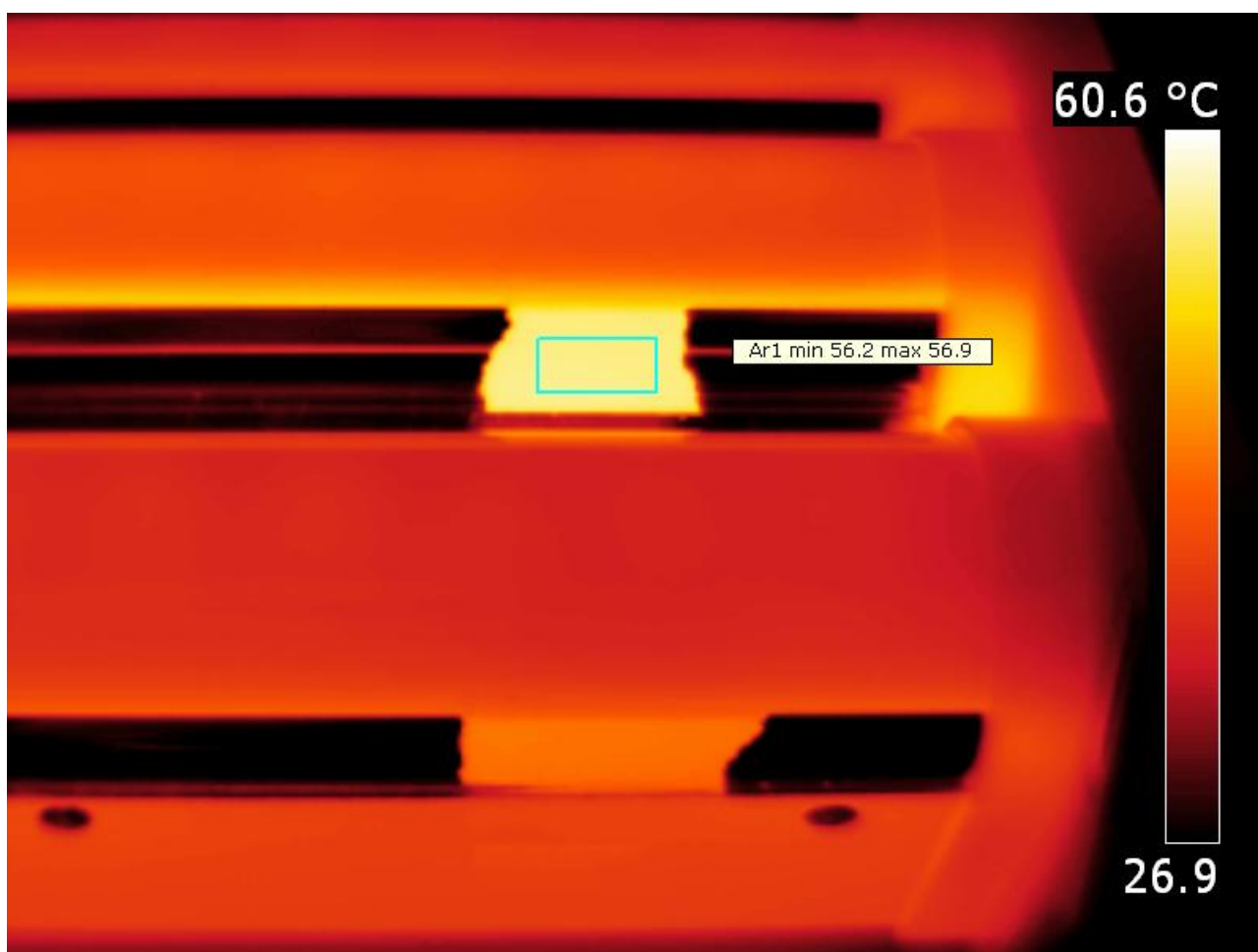
Lamp measurement report – 22 May 2010

Temperature measurements lamp



Overview temperature image. looking for the hotspots.

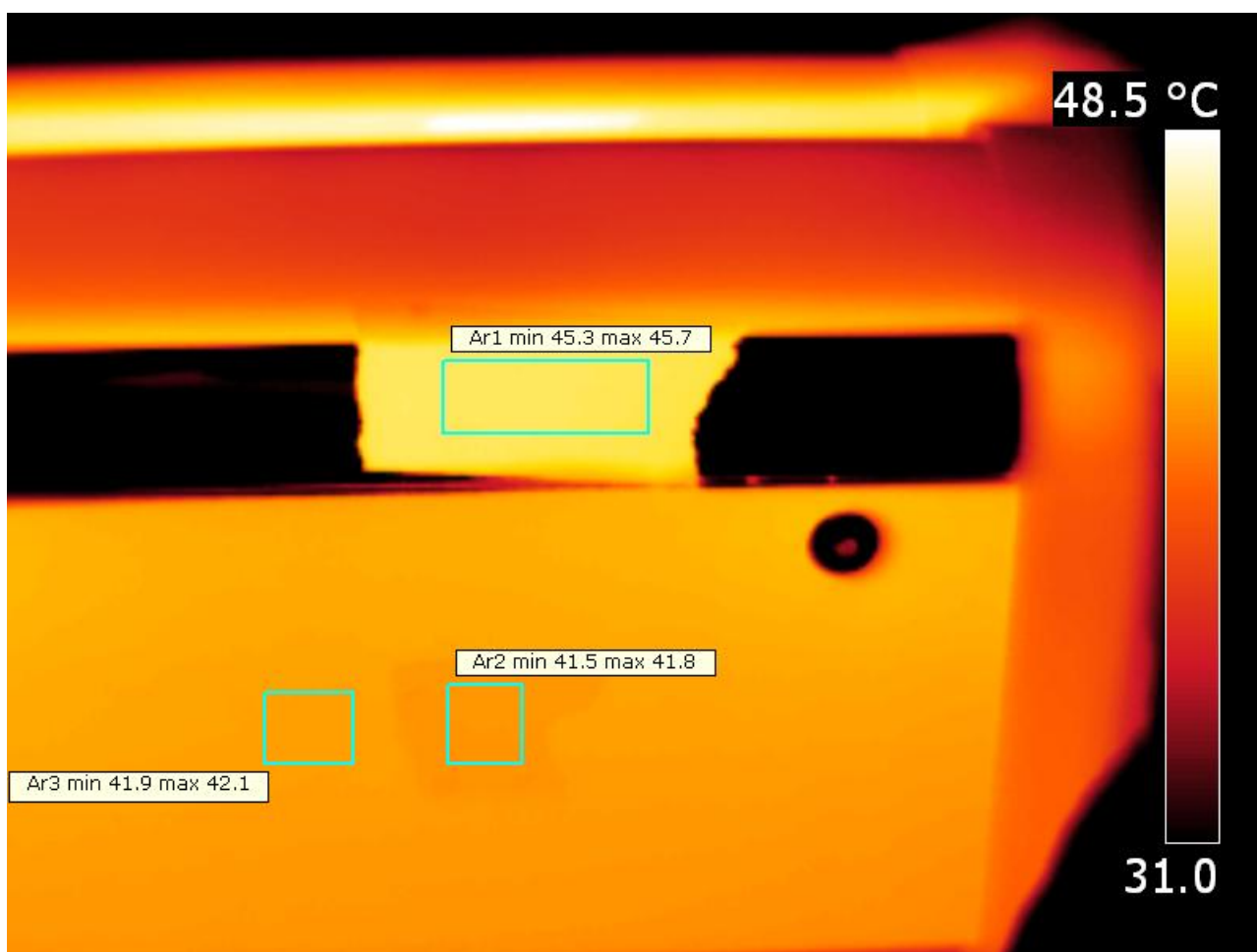
Lamp measurement report – 22 May 2010



Sideview metal strip, much reflective and therefore measured with help of a piece of painting tape.

The strip on the sides of the center tube gets the hottest. The strip itself does not radiate a lot of heat since it has a low emissivity. Painting the strip with some paint with matte surface greatly increases the emissivity and herewith the release of heat.

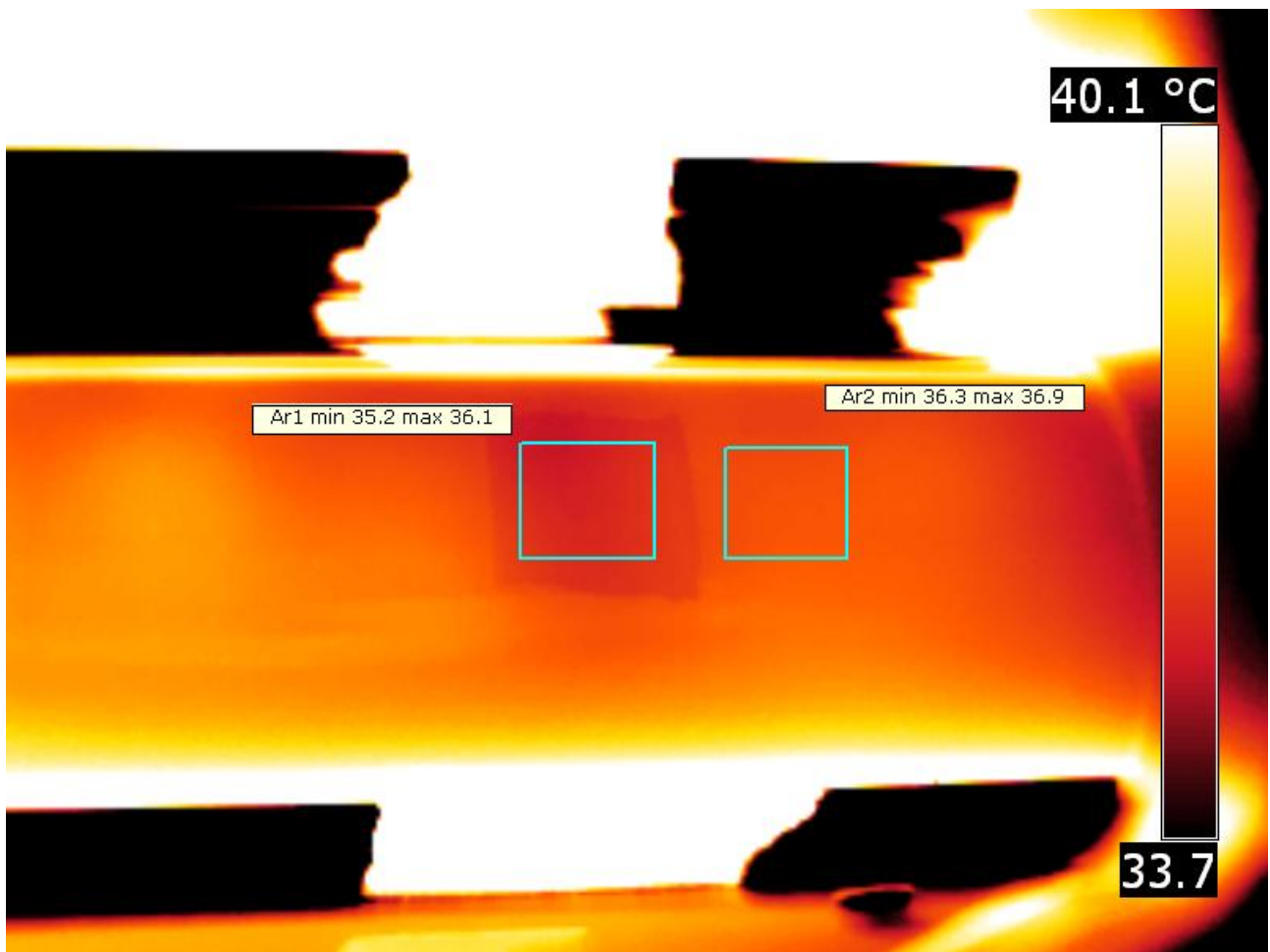
Lamp measurement report – 22 May 2010



The alu strip at the side of a tube on one of the sides of the lamp. Also included the temperature of the side of the lamp.

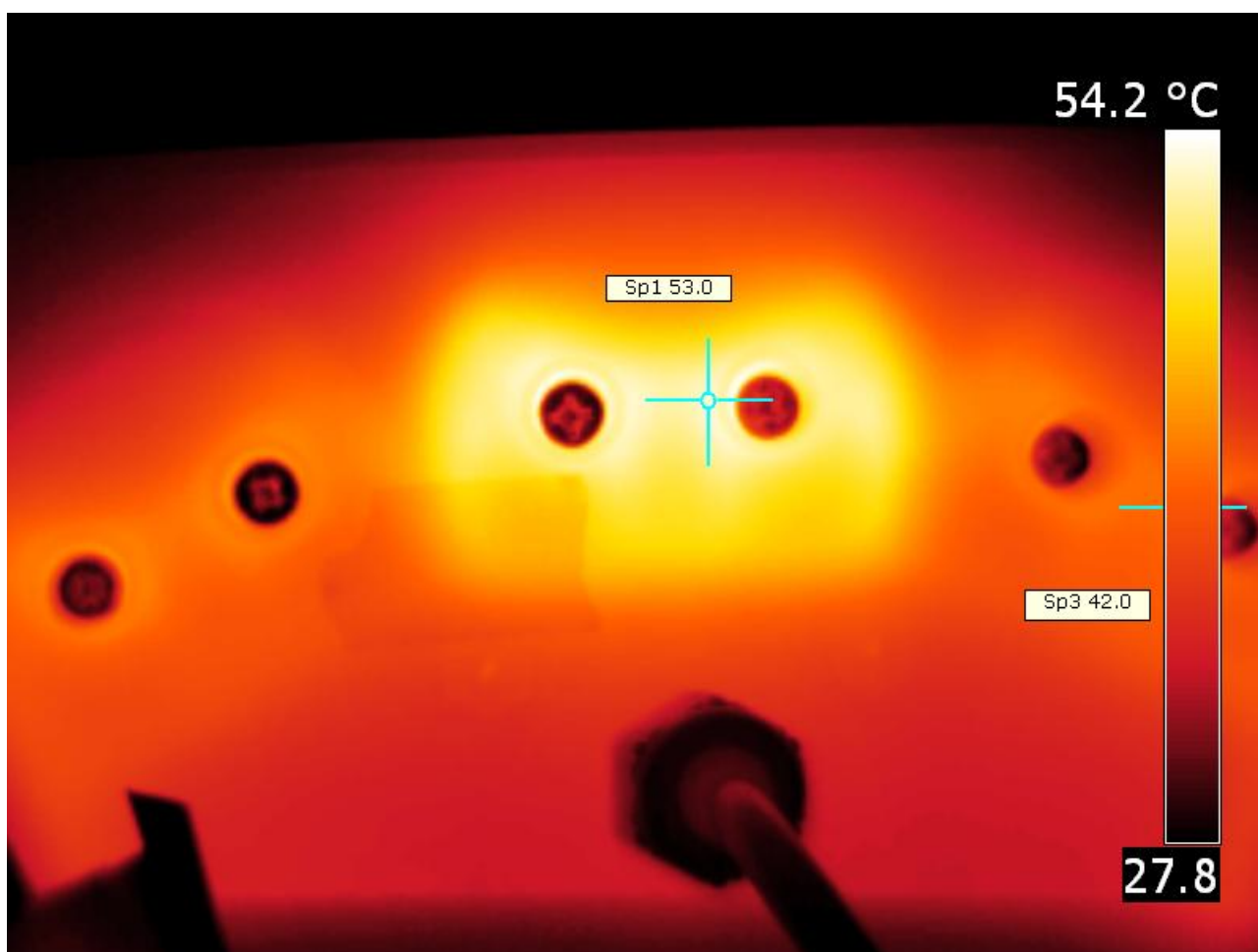
The emissivity of the housing of the lamp is comparable to that of the painting tape.

Lamp measurement report – 22 May 2010



The led tube itself, which emissivity is put at 0.87 to have equal temperature readings as on the painting tape. The correct value being 35-36 deg C.

Lamp measurement report – 22 May 2010



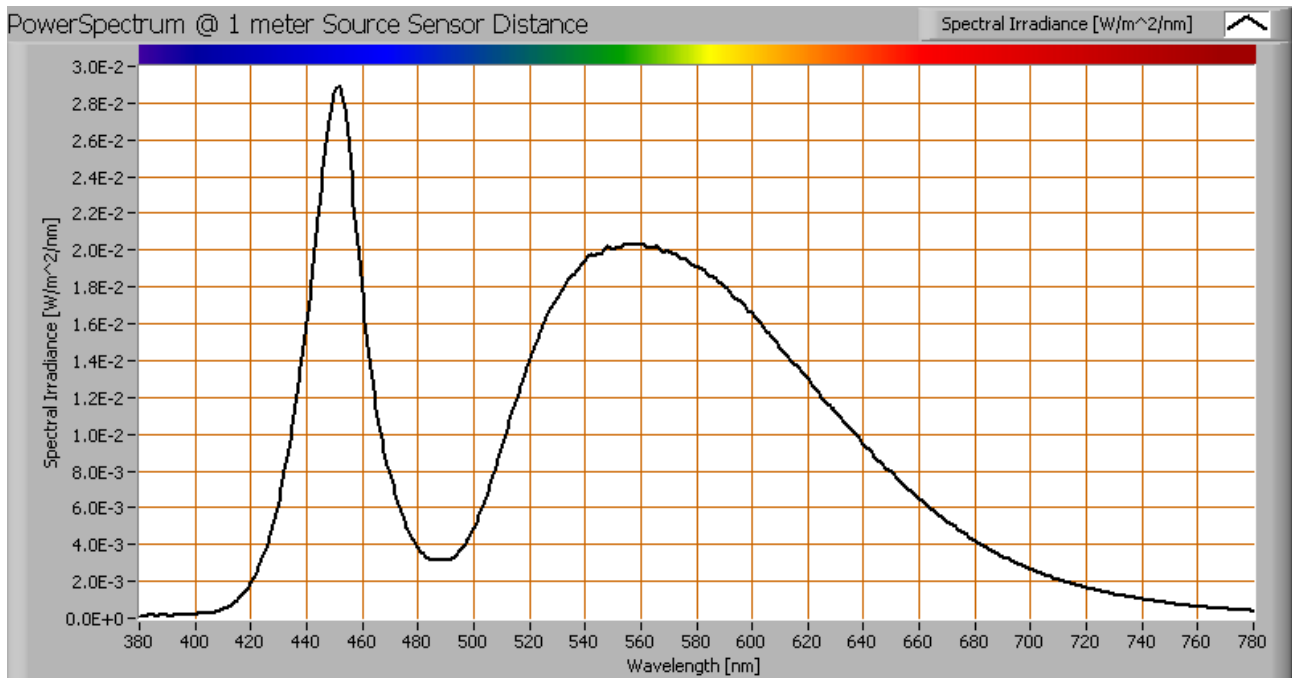
The end caps of the lamp. The center connection gets the hottest

status lamp	> 2 hours on
ambient temperature	24 deg C
reflected background temperature	24 deg C
camera	Flir T335
emissivity	0.95 ⁽¹⁾
measurement distance	most images on 0.2 m
IFOV _{geometric}	0.3 mm
NETD (thermal sensitivity)	50 mK

⁽¹⁾ The emissivity settings vary, see explanation in the text.

Lamp measurement report – 22 May 2010

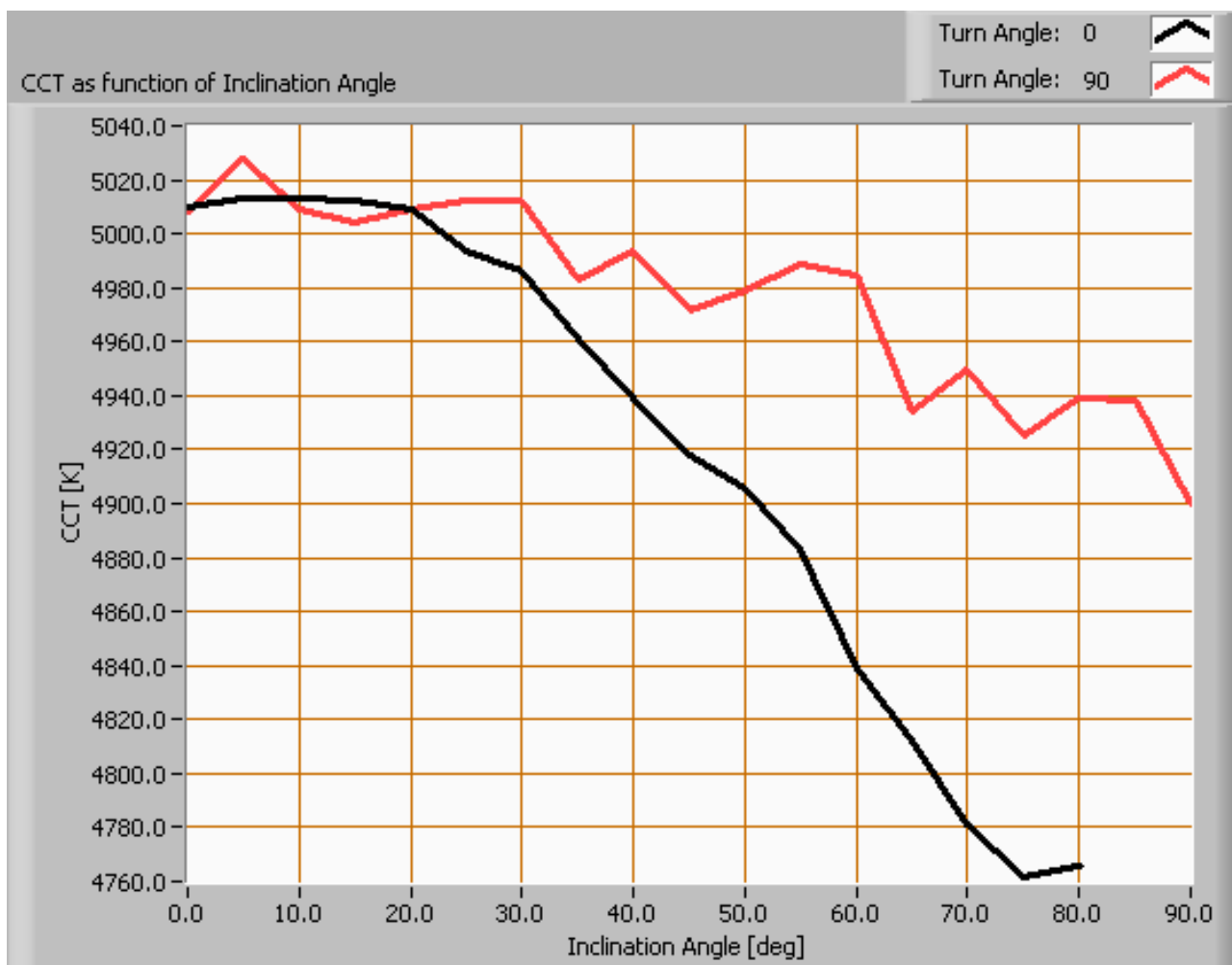
Color temperature and Spectral power distribution



The spectral power distribution of this light bulb, energies on y-axis valid at 1 m distance.

The measured color temperature is about 5025 K which is neutral white / cold white. This color temperature is measured straight underneath the light bulb. Below a graph showing the color temperature for different inclination angles.

Lamp measurement report – 22 May 2010



Color temperature as a function of inclination angle.

The measurement of CCT is measured for inclination angles up to 80° as beyond that angle the illuminance values are very low (< 5 lux).

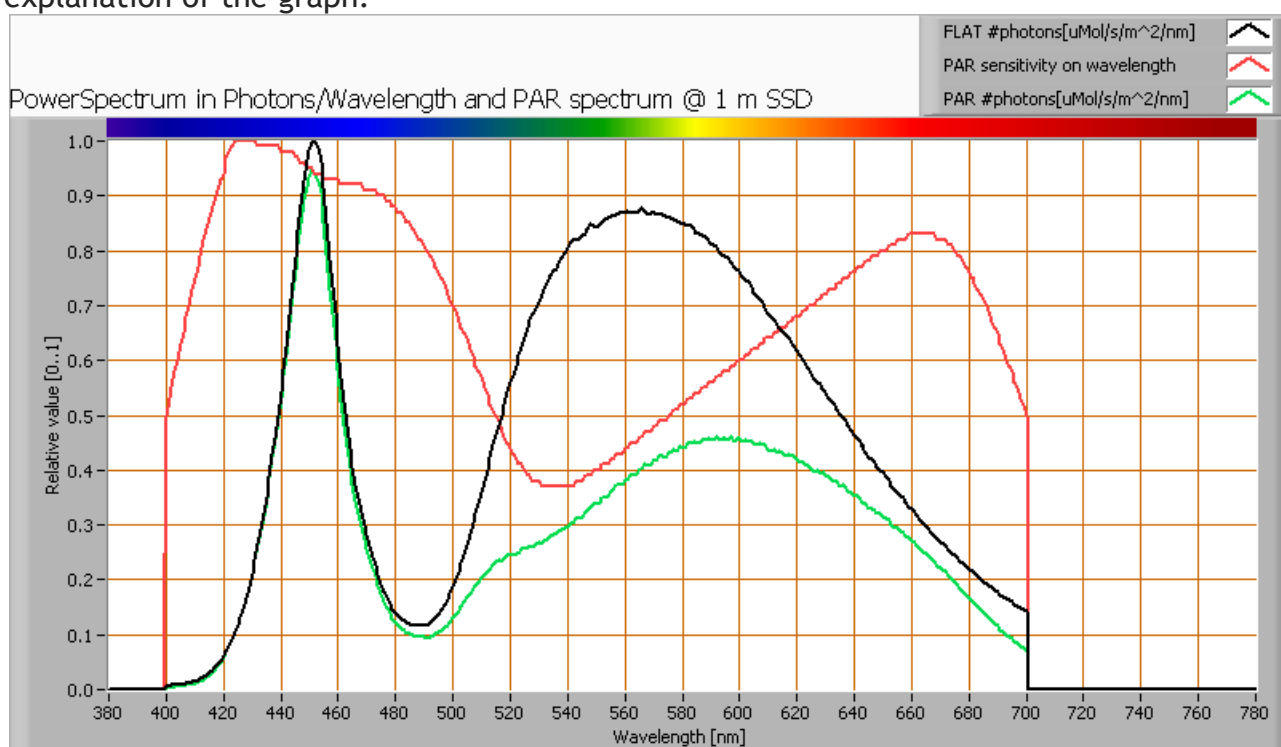
The beam angle for the C0-C180 plane (red line) is 127°, meaning a 63° inclination angle. In this area most of the light is present. The variation in correlated color temperature in this area is $\approx 1\%$.

The beam angle for the C90-C270 plane (black line) is 108°, meaning a 54° inclination angle. In this area most of the light is present. The variation in correlated color temperature in this area is $< 3\%$.

Lamp measurement report – 22 May 2010

PAR value and PAR spectrum

To make a statement how well the light of this light bulb is for growing plants, the PAR-area needs to be determined. See the OliNo website how this all is determined and the explanation of the graph.



The photon spectrum, then the sensitivity curve and as result the final PAR spectrum of the light of this light bulb

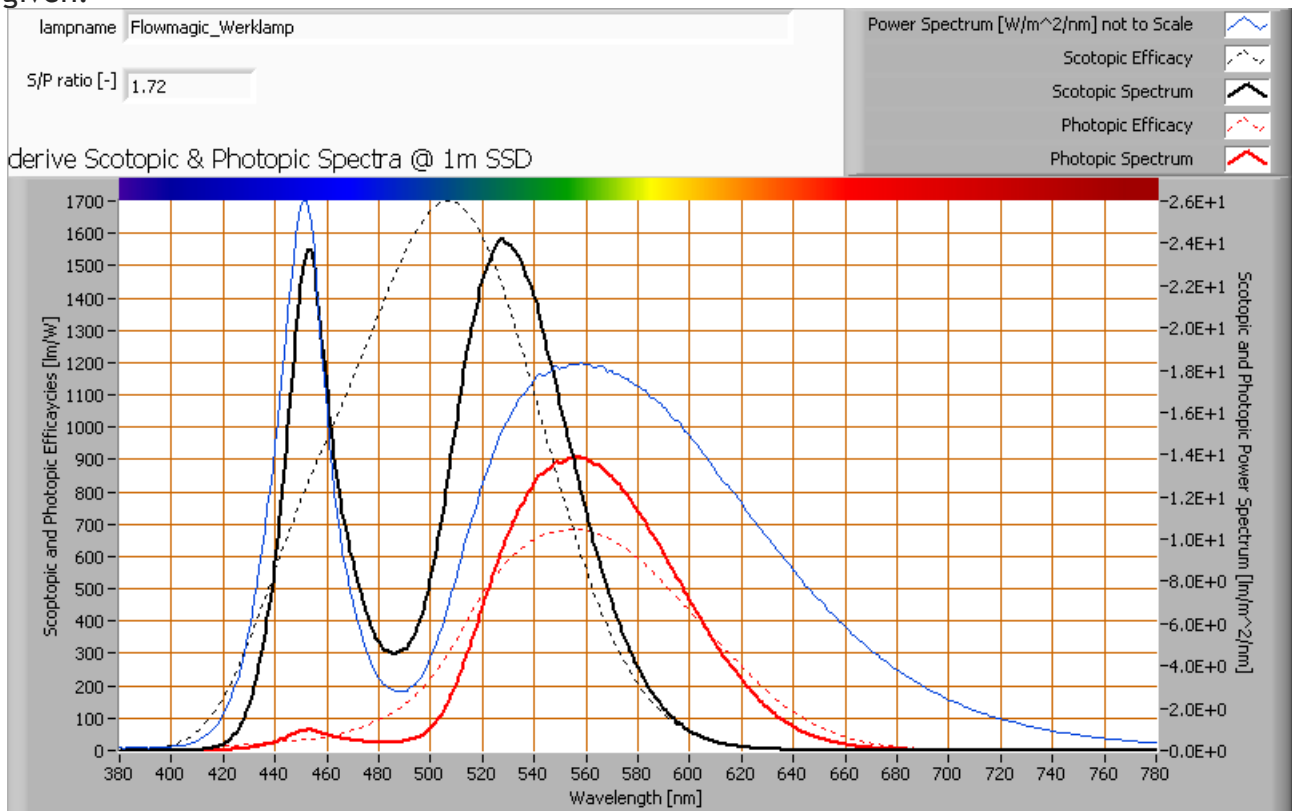
parameter	value	unit
PAR-number	10	$\mu\text{Mol/s/m}^2$
PAR-photon current	33.5	$\mu\text{Mol/s}$
PAR-photon efficacy	0.7	$\mu\text{Mol/s/W}$

The PAR efficiency is 64 % (valid for the PAR wave length range of 400 - 700 nm). So maximally 64 % of the total of photons in the light is effectively used by the average plant (since the plant might not take 100 % of the photons at the frequency where its relative sensitivity is 100 %).

Lamp measurement report – 22 May 2010

S/P ratio

The S/P ratio and measurement is explained on the OliNo website. Here the results are given.



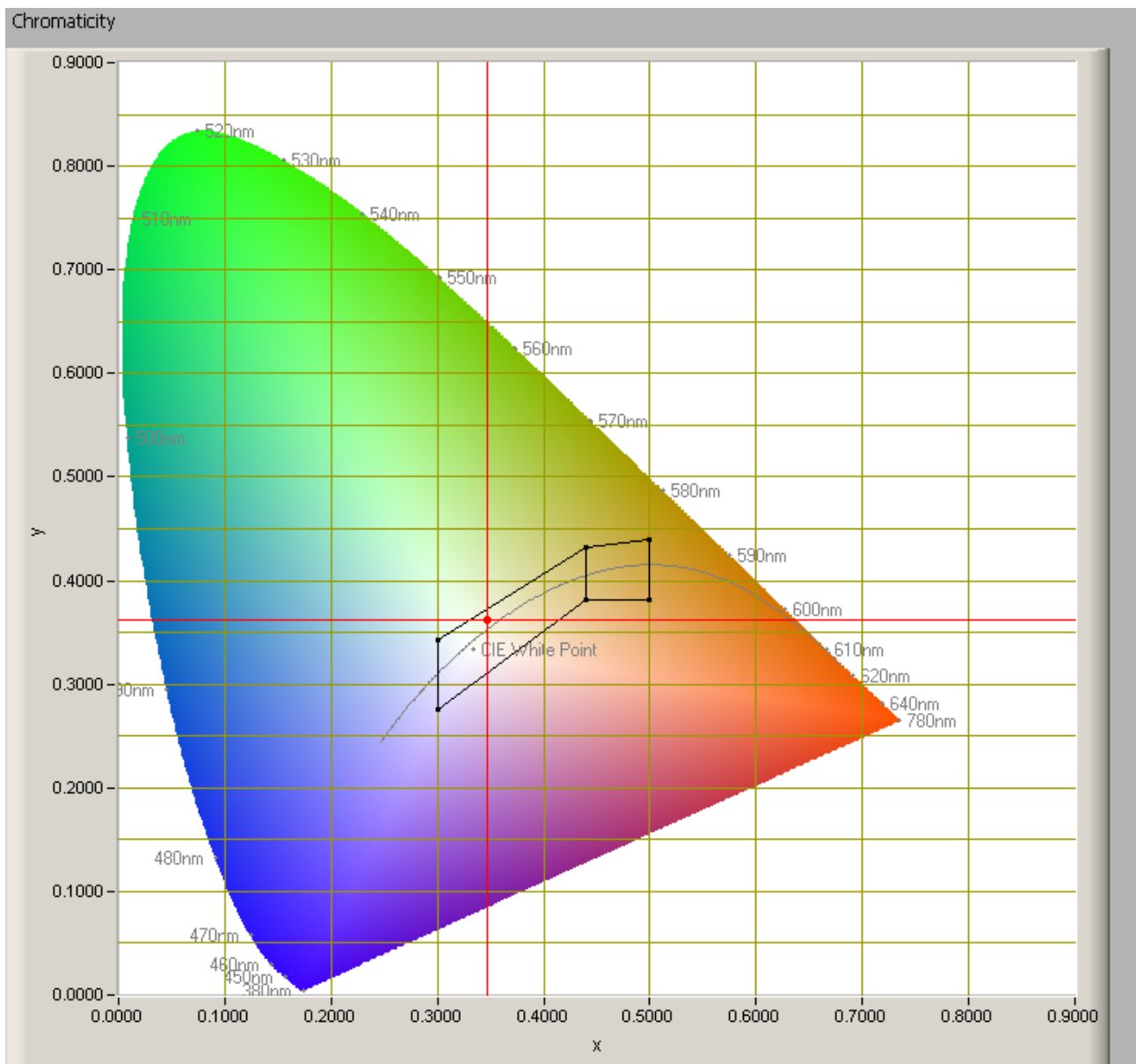
The power spectrum, sensitivity curves and resulting scotopic and photopic spectra (spectra energy content defined at 1 m distance).

The S/P ratio is 1.7.

More info on S/P ratio can be found on the OliNo website.

Lamp measurement report – 22 May 2010

Chromaticity diagram



The chromaticity space and the position of the lamp's color coordinates in it.

The light coming from this lamp is inside the area designated with class A. This Class A is an area that is defined for signal lamps, see also the OLiNo website.
Its coordinates are $x=0.3464$ and $y=0.3624$.

Lamp measurement report – 22 May 2010





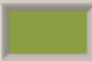
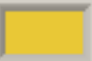
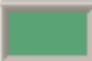
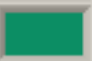
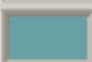
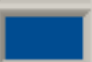
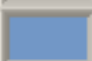
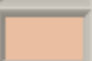
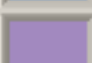
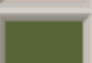
Color Rendering Index (CRI) or also Ra

Herewith the image showing the CRI as well as how well different colors are represented (rendered). The higher the number, the better the resemblance with the color when a black body radiator would have been used (the sun, or an incandescent lamp). Practical information and also some critics about the CRI can be found on the OliNo website. Each color has an index R_x , and the first 8 indexes ($R_1 \dots R_8$) are averaged to compute the R_a which is equivalent to the CRI.

☐ manual

Reference Illuminant: Planckian radiator CCT: 5013 K

Chromaticity Difference DC= 1.8E-3

R1= 66.8		R8= 56.8	
R2= 74.7		R9= -30.3	
R3= 78.6		R10= 37.9	
R4= 69.5		R11= 63.3	
R5= 66.6		R12= 34.3	
R6= 63.6		R13= 67.7	
R7= 81.4		R14= 87.6	

Ra
 (mean value of $R_1 - R_8$)
69.7

CRI of the light of this lightbulb.

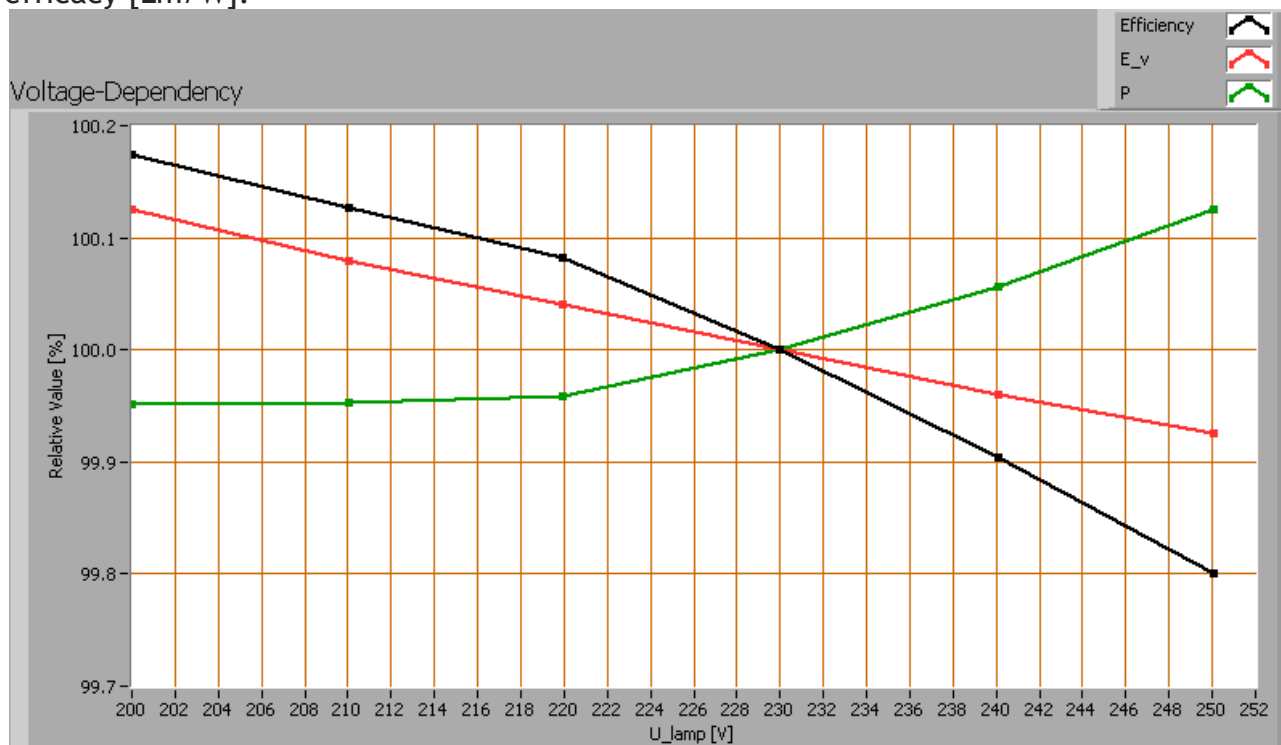
The value of 70 is lower than 80 which is considered a minimum value for indoor usage. Note: the chromaticity difference is 0.0018 indicates the distance to the Planckian Locus. There is no norm yet that states what the max deviation from white light is allowed to be. A reference with signal lights as a reference is given in the chromaticity diagram.

Voltage dependency

The dependency of a number of lamp parameters on the lamp voltage is determined. For this, the lamp voltage has been varied and its effect on the following light bulb parameters measured: illuminance E_v [lx], the lamp power P [W] and the luminous

Lamp measurement report – 22 May 2010

efficacy [lm/W].



Lamp voltage dependencies of certain light bulb parameters, where the value at 230 V is taken as 100 %.

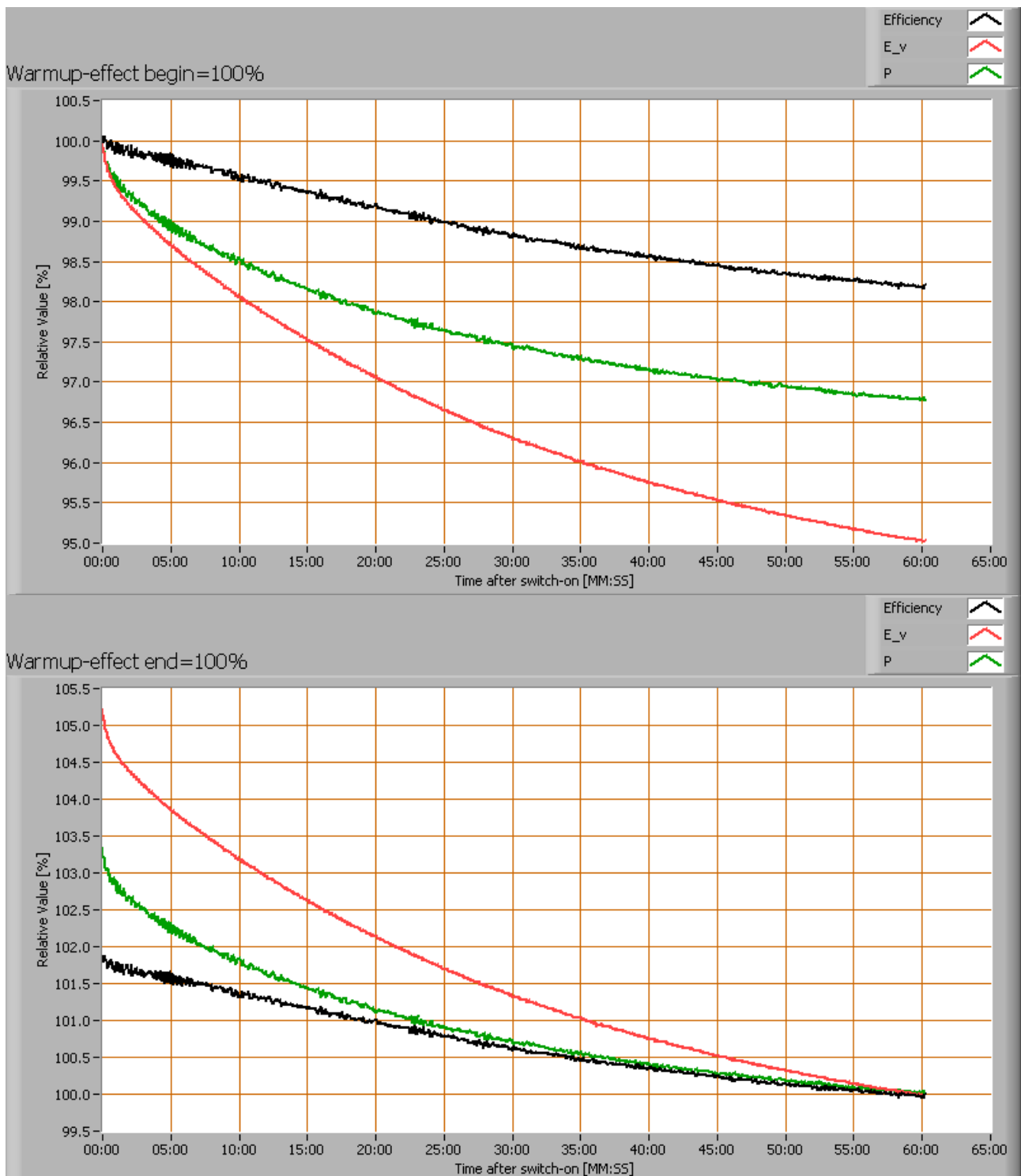
The illuminance and consumed power do not vary significantly when the voltage is varied.

When the voltage at 230 V varies with + and - 5 V, then the illuminance varies < 0.1 %, so when abrupt voltage changes occur this effect is not visible in the illuminance output.

Warm up effects

After switch on of a cold lamp, the effect of heating up of the lamp is measured on illuminance E_v [lx], the lamp power P [W] and the luminous efficacy [lm/W].

Lamp measurement report – 22 May 2010



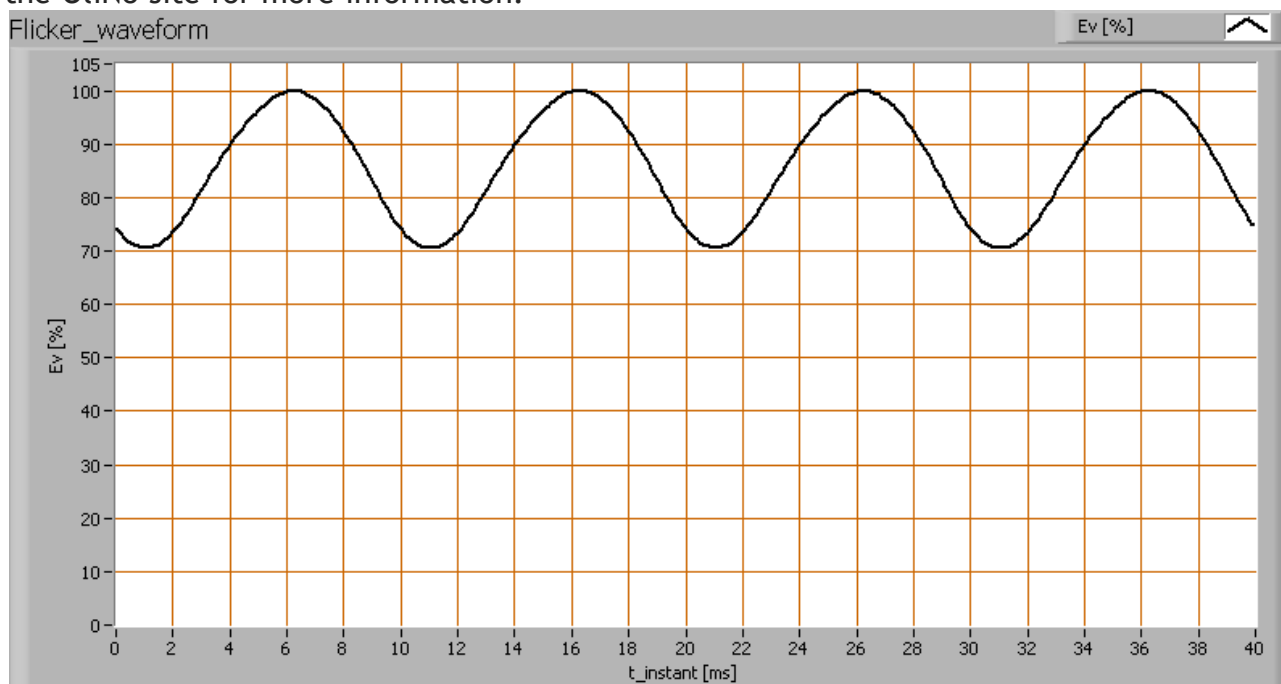
Effect of warming up on different light bulb parameters. At top the 100 % level is put at begin, and at bottom at the end.

Lamp measurement report – 22 May 2010

The warm up time is some more than 60 minutes. During that time the the illuminance decreases with 5-6 % and the consumed power with 4-5 %.

Measure of flickering

An analysis is done on the measure of flickering of the light output by this light bulb. See the OliNo site for more information.



The measure of fast illuminance variation of the light of the light bulb

parameter	waarde	eenheid
Flicker frequency	100	Hz
Illuminance modulation index	17	%

The illuminance modulation index is computed as: $(\max_Ev - \min_Ev) / (\max_Ev + \min_Ev)$.

Lamp measurement report – 22 May 2010

Photo



Photo courtesy by www.OliNo.org

An other position of the lamp, shining side ways.

Disclaimer

The information in this OliNo report is created with the utmost care. Despite of this the information can have inaccuracies. OliNo cannot be held liable for the content of the information in this report nor for the consequences of its use. The data in this report is not legally binding.