

Lamp measurement report – 9 Dec 2010

1500mm Twin IP65 Led Luminaire

by
ElektoLED



Lamp measurement report – 9 Dec 2010

Summary measurement data


parameter	meas. result	remark
Color temperature	5808 K	Cold white
Luminous intensity I_v	947 Cd	Measured straight underneath the lamp
Illuminance modulation index	3 %	Measured straight underneath the lamp. Is a measure for the amount of flickering.
Beam angle	120 deg	120° for the C0-C180 plane (crossing length direction of the lamp) and 108° for the C90-C270 plane (length direction).
Power P	43.4 W	
Power Factor	0.88	For every 1 kWh net power consumed, there has been 0.5 kVAhr for reactive power.
THD	41 %	Total Harmonic Distortion
Luminous flux	3179 Lm	
Luminous efficacy	73 Lm/W	
EU-label classification	A	The energy class, from A (more efficient) to G (least efficient).
CRI_Ra	66	Color Rendering Index.
Coordinates chromaticity diagram	x=0.3256 and y=0.3434	
Fitting	FL-tube	This Tube Light is connected directly to the grid voltage of 230 V AC.
PAR-value	8.0 $\mu\text{Mol/s/m}^2$	The number of photons seen by an average plant when it is lit by the light of this light bulb. Value valid at 1 m distance from light bulb.

Lamp measurement report – 9 Dec 2010

PAR-photon efficacy	0.6 $\mu\text{Mol/s/W}_e$	The total emitted number of photons by this light, divided by its consumption in W. It indicates a kind of efficacy in generating photons.
S/P ratio	1.9	This factor indicates the amount of times more efficient the light of this light bulb is perceived under scotopic circumstances (low environmental light level).
L x W x H external dimensions	1560 x 160 x 100 mm	External dimensions of the luminaire.
L x W x H luminous area	1550 x 150 x 40 mm	Dimensions of the luminous area (used in Eulumdat file). This is equal to the dimensions of the prismatic cover.
General remarks		<p>The ambient temperature during the whole set of measurements was 23.0-24.4 deg C.</p> <p>The hottest temperature of the luminaire is about 17 degrees hotter than ambient.</p> <p>Warm up effect: during the warm up time the illuminance decreases with about 22 % and the consumed power with about 11 %.</p> <p>Voltage dependency: the power consumption and illuminance do not vary significantly when the voltage is varied from 200 - 250 V.</p>

Lamp measurement report – 9 Dec 2010

Overview table

m.	Ø 50%		C0-180: 120° C90-270: 108° 	E (lux)	Luminaire Efficacy
	C0-180	C90-270			73 (lumen per Watt)
0.25	0.86	0.69		15158	Half-peak diam C0-180
0.5	1.72	1.39		3789	3.45 x diameter(m)
1	3.45	2.77		947	Half-peak diam C90-270
1.5	5.17	4.16		421	2.77 x diameter(m)
3	10.34	8.32		105	Illuminance
4	13.79	11.1		59	947 / distance² (lux)
5	17.24	13.87		38	Total Output
					3179 (lumen)

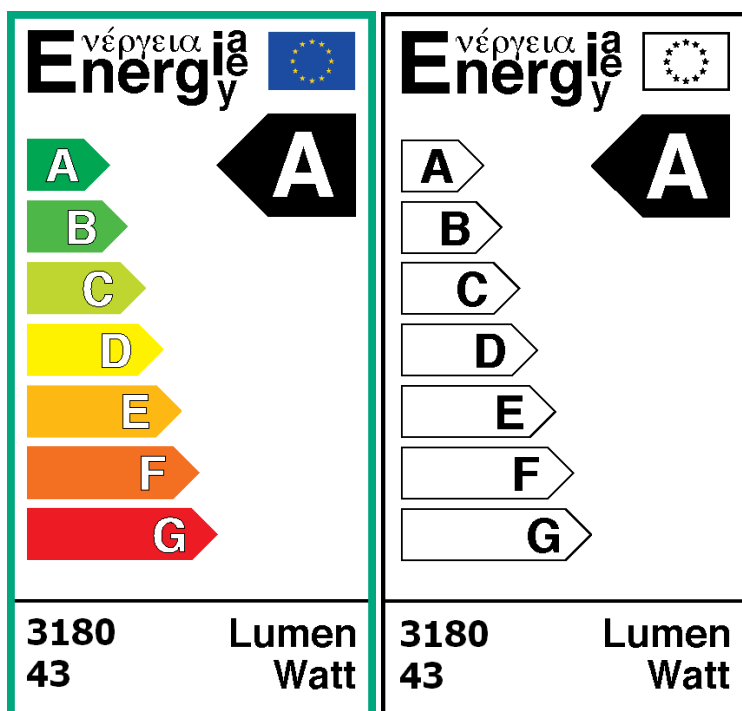
The overview table is explained on the OLiNo website.

Please note that this overview table makes use of calculations, use this data with care as explained on the OLiNo site. E (lux) values are not accurate, when within 5 x 1550 mm ≈ 8000 mm. Within this distance from the lamp, the measured lux values will be less than the computed values in this overview as the measurements are then within the near field of the lamp.

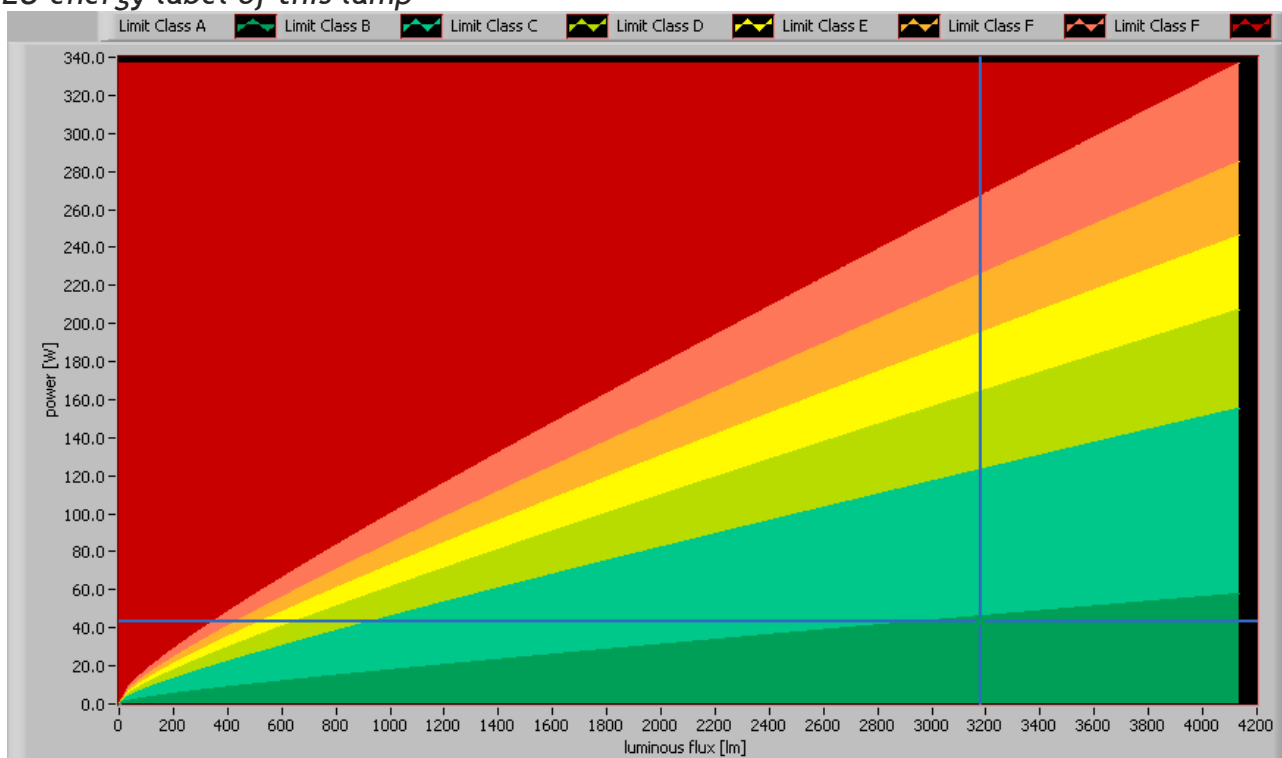
EU Energy label classification

With the measurement results of the luminous flux and the consumed power the classification on energy of this lamp is calculated. This information is requested in the EU for certain household lamps, see also the OLiNo site that explains for which lamps it is requested, how the label looks like and what information it needs to contain. Herewith the labels for this lamp in color and black and white.

Lamp measurement report – 9 Dec 2010



EU energy label of this lamp

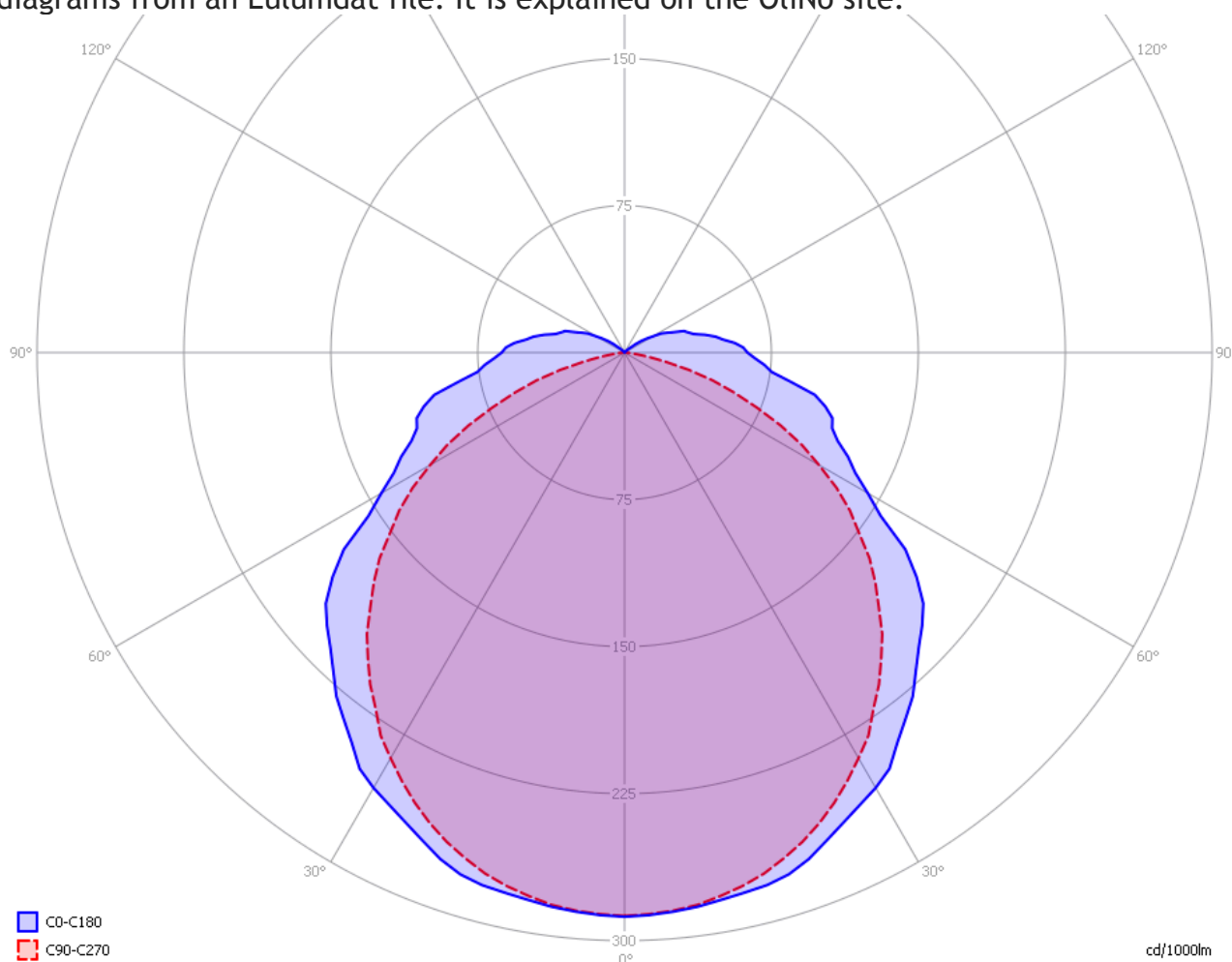


The lamp's performance in the lumen-Watt field, with the energy efficacy fields indicated.

Lamp measurement report – 9 Dec 2010

Eulumdat light diagram

This light diagram below comes from the program Qlumedit, that extracts these diagrams from an Eulumdat file. It is explained on the OliNo site.



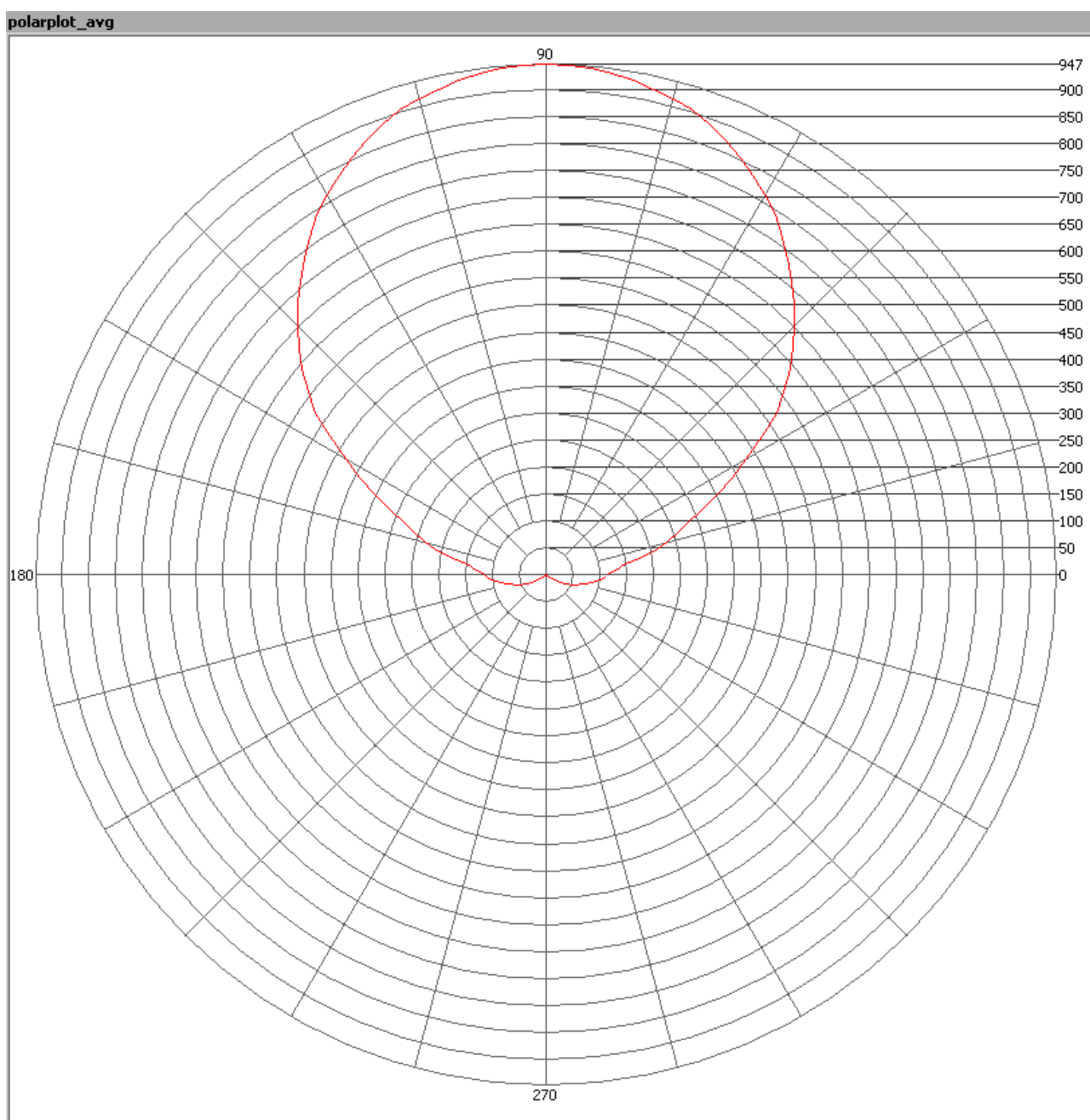
The light diagram giving the radiation pattern.

It indicates the luminous intensity around the light bulb. The direction or plane C0-C180 cuts the lamp in the direction crossing the length direction of it, and the C90-C270 plane cuts the lamp in the length direction.

Illuminance E_v at 1 m distance, or luminous intensity I_v

Herewith the plot of the *averaged* luminous intensity I_v as a function of the inclination angle with the light bulb.

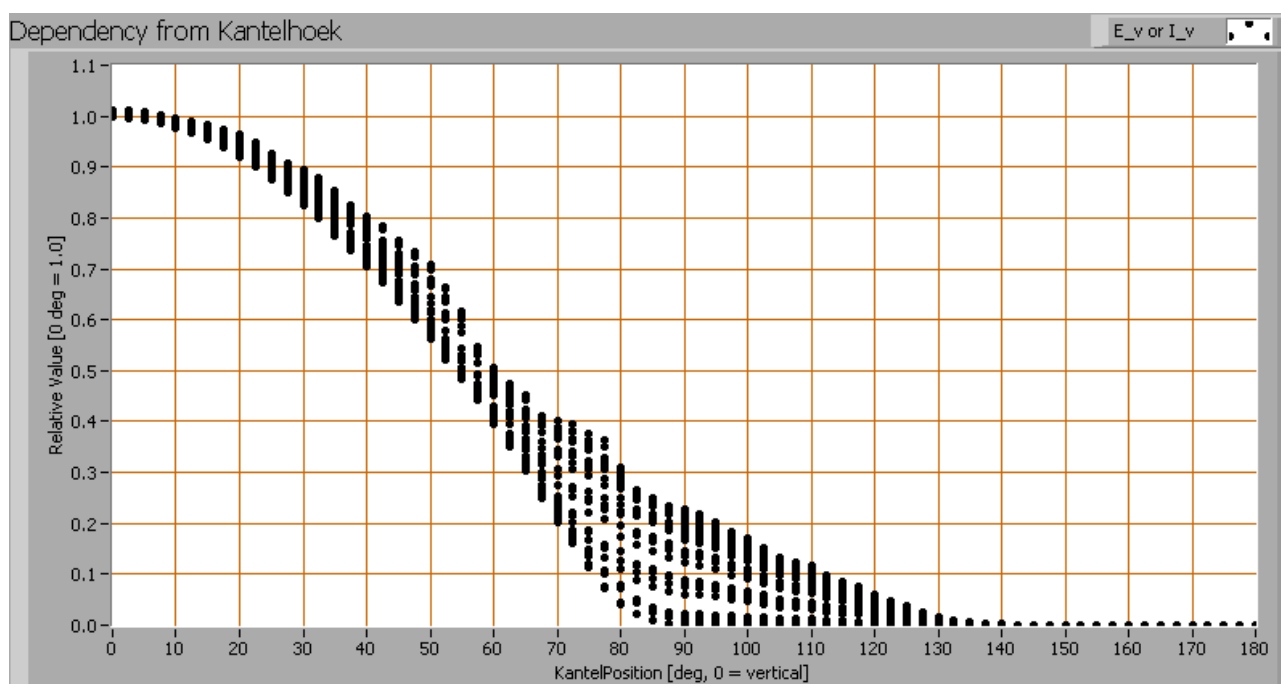
Lamp measurement report – 9 Dec 2010



The radiation pattern of the light bulb.

This radiation pattern is the average of the light output of the light diagram given earlier. Also, in this graph the luminous intensity is given in Cd. These averaged values are used (later) to compute the lumen output.

Lamp measurement report – 9 Dec 2010



Intensity data of every measured turn angle at each inclination angle.

This plot shows per inclination angle the intensity measurement results for each turn angle at that inclination angle. There normally are differences in illuminance values for different turn angles. However for further calculations the averaged values will be used. When using the average values per inclination angle, the beam angle can be computed, being 120° in the C0-C180 plane and 108° in the C90-C270 plane.

Luminous flux

With the averaged illuminance data at 1 m distance, taken from the graph showing the averaged radiation pattern, it is possible to compute the luminous flux. The result of this computation for this light spot is a luminous flux of 3179 Lm.

Luminous efficacy

The luminous flux being 3179 Lm, and the power of the light bulb being 43.4 W, yields a luminous efficacy of 73 Lm/W.

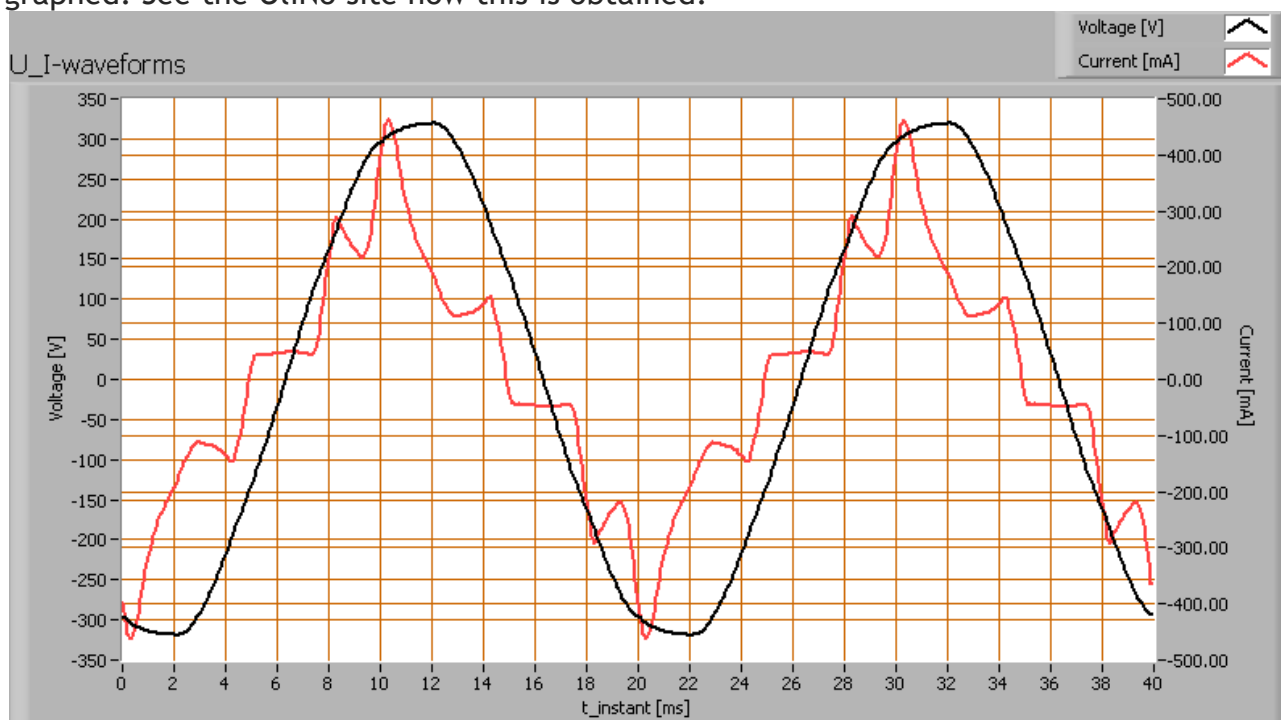
Lamp measurement report – 9 Dec 2010

Electrical properties

A power factor of 0.88 means that for every 1 kWh net power consumed, a reactive component of 0.5 kVAr was needed.

Lamp voltage	230 VAC
Lamp current	215 mA
Power P	43.4 W
Apparent power S	49.5 VA
Power factor	0.88

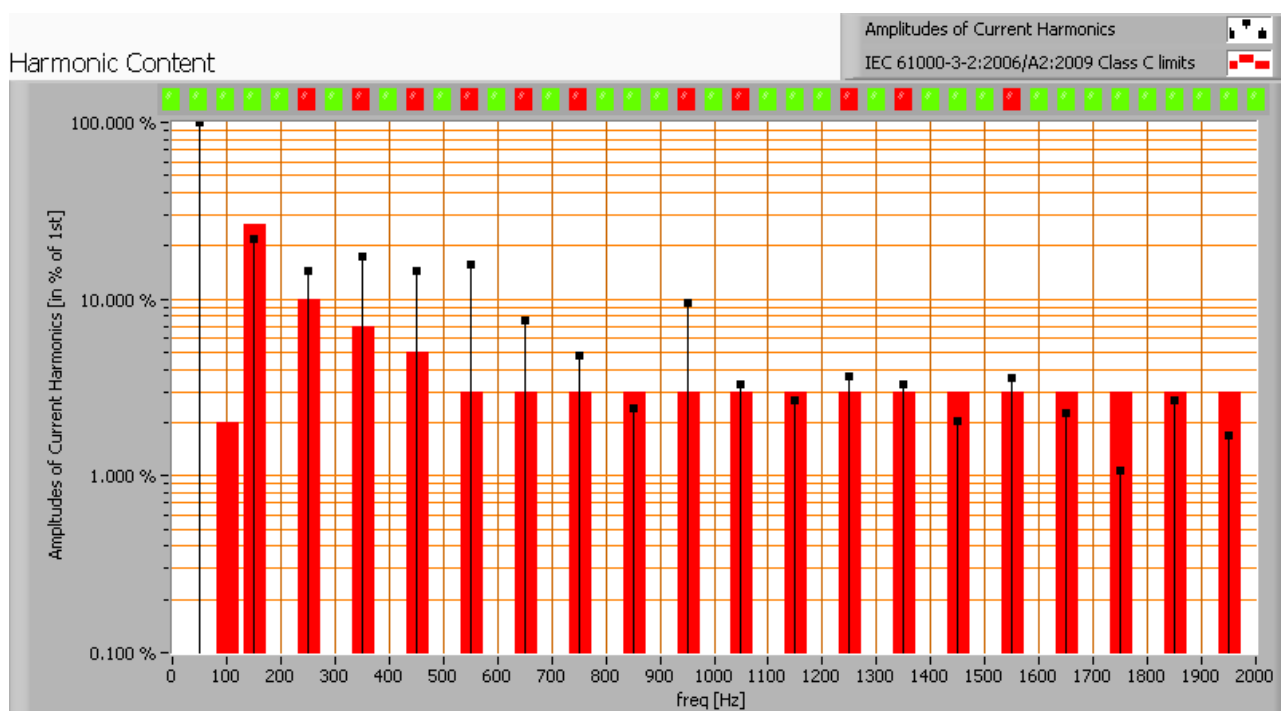
Of this light bulb the voltage across and the resulting current through it are measured and graphed. See the OLiNo site how this is obtained.



Voltage across and current through the lightbulb

This waveforms have been checked on requirements posed by the norm IEC 61000-3-2:2006 (including up to A2:2009). See also the explanation on the OLiNo website.

Lamp measurement report – 9 Dec 2010

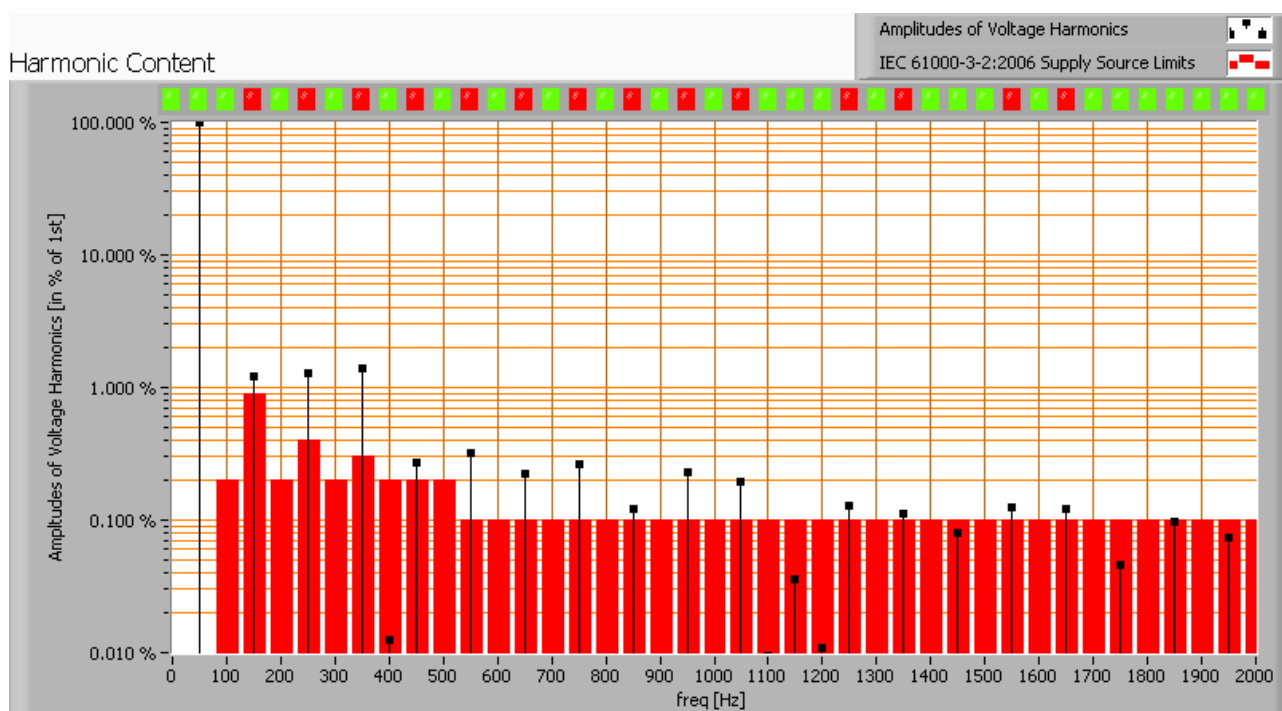


Harmonics in in the current waveform and checked against IEC61000-3-2:2006

There are limits for the harmonics for lighting equipment > 25 W which are not fulfilled. Note: the voltage used was not conform this IEC norm; it has a bit too high content in harmonics. This affects also negatively the results of the harmonics in the current. However the current has several harmonics relatively far beyond the norm (eg at 550 Hz, norm is 3 % whereas 15 % is present) so it is expected that even with a voltage so low in harmonic content fulfilling the norm the current will still have some harmonics too much.

Herewith, for completeness, the spectrum of the used voltage, and the indication where it does not comply to the norm.

Lamp measurement report – 9 Dec 2010

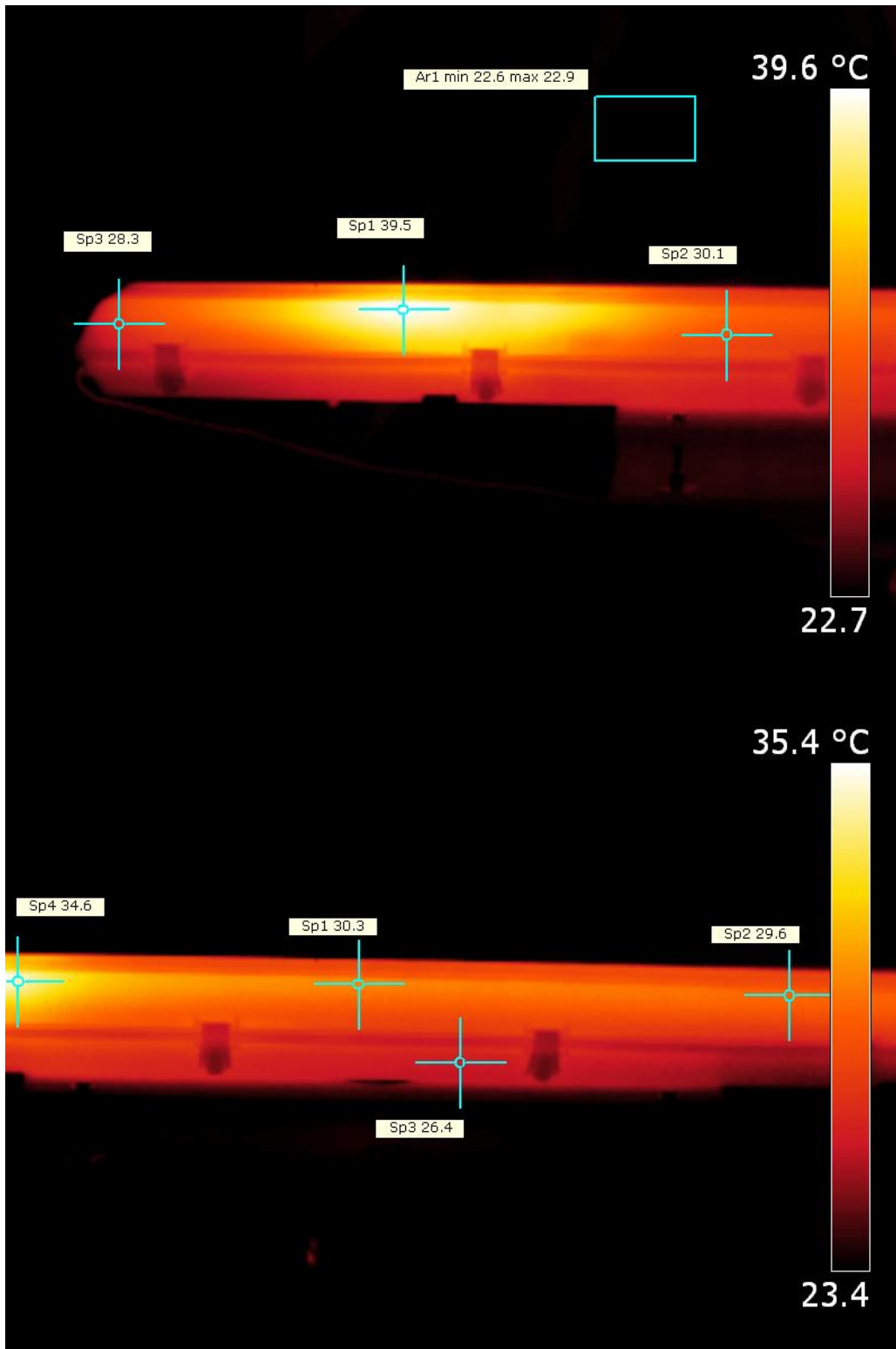


Harmonics in the voltage waveform and checked against IEC61000-3-2:2006

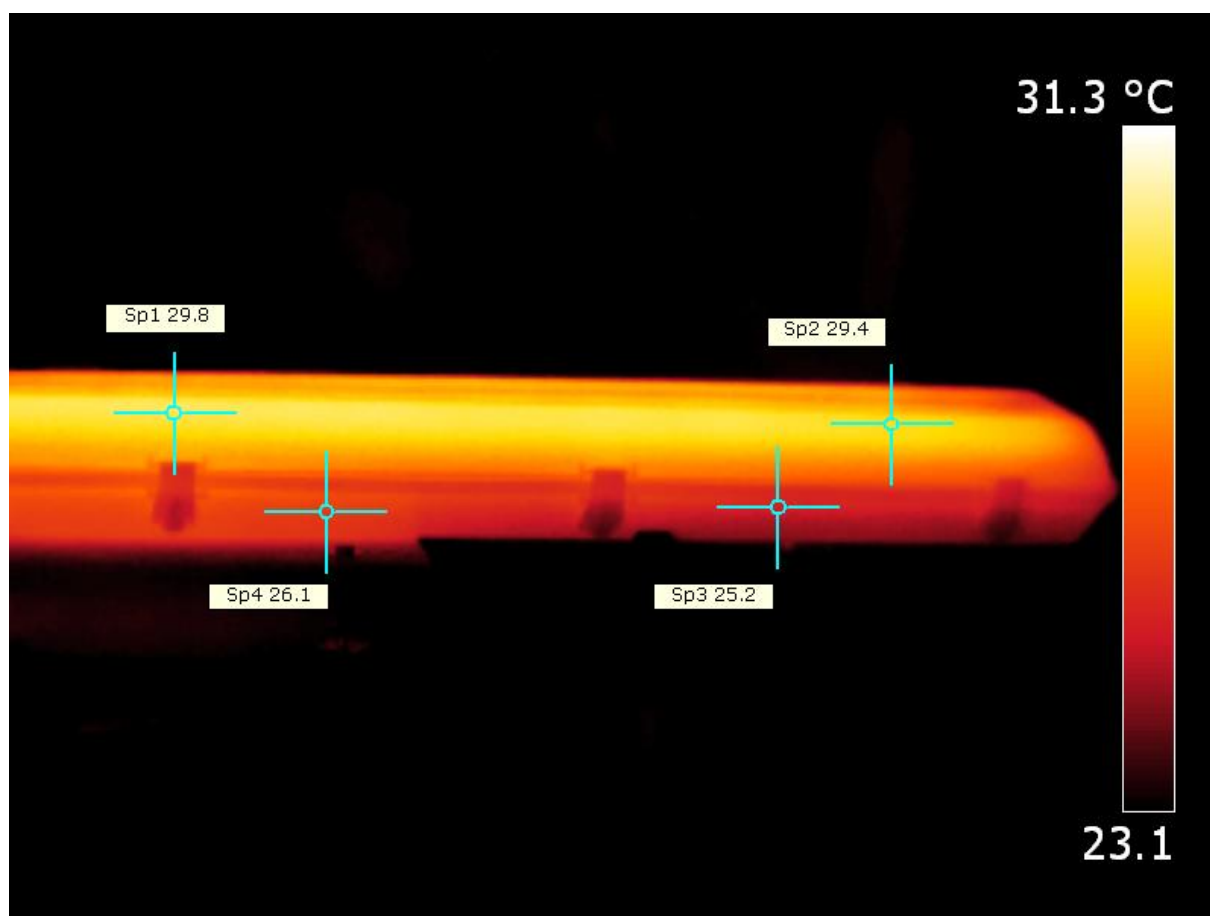
The Total Harmonic Distortion of the current is computed as 41 %.

Lamp measurement report – 9 Dec 2010

Temperature measurements lamp



Lamp measurement report – 9 Dec 2010



Temperature measurement on the luminaire.

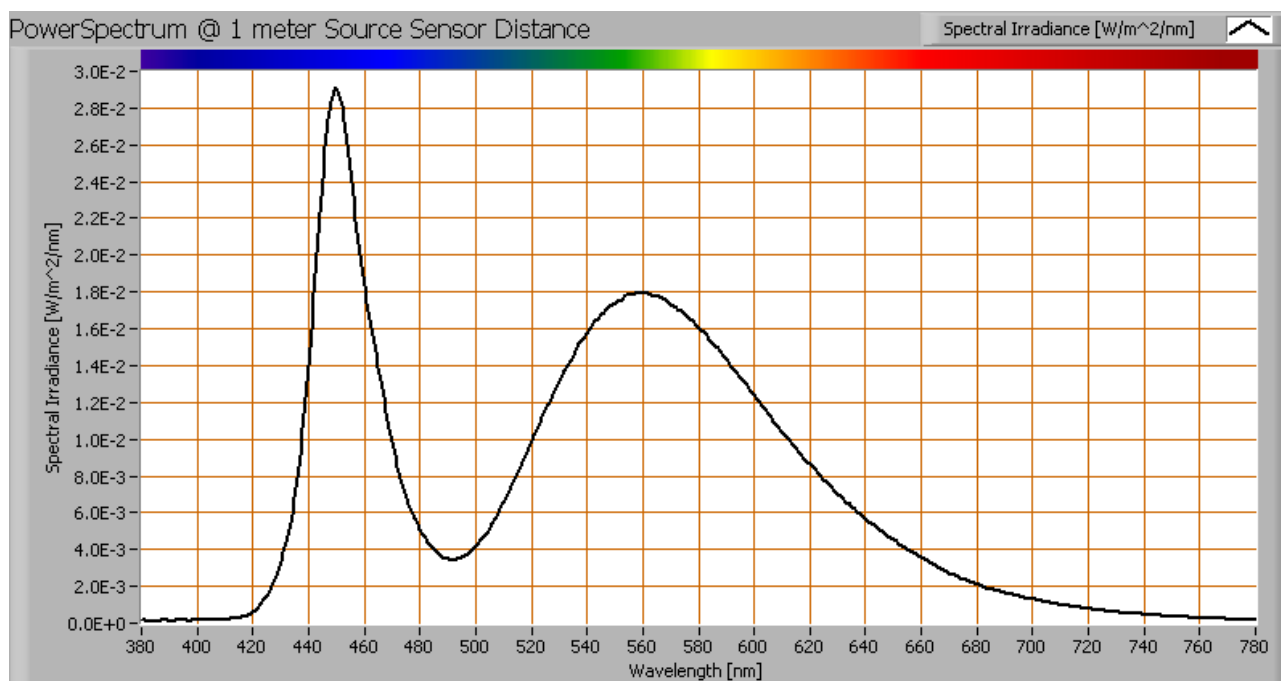
The housing has a very high emissivity. It is comparable to that of masking tape, being about 0.95. The tape was put on the housing and not seen in the temperature images, indicating the same emissivity.

status lamp	> 2 hours on
ambient temperature	23 deg C
reflected background temperature	23 deg C
camera	Flir T335
emissivity	0.95 ⁽¹⁾
measurement distance	1 m
IFOV _{geometric}	0.136 mm per 0.1 mm measurement distance
NETD (thermal sensitivity)	50 mK

⁽¹⁾ See the images and text for explanation.

Lamp measurement report – 9 Dec 2010

Color temperature and Spectral power distribution

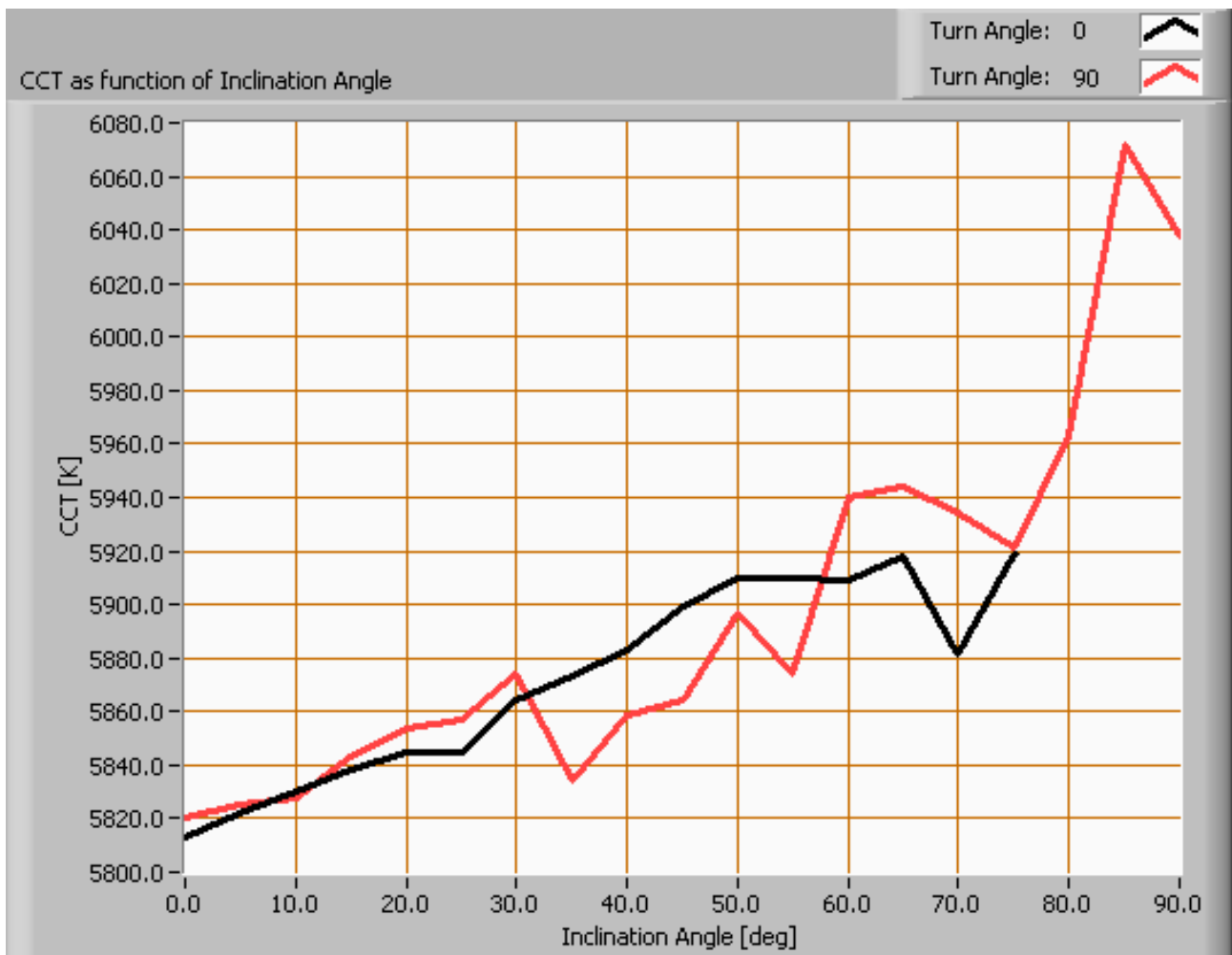


The spectral power distribution of this light bulb, energies on y-axis valid at 1 m distance.

The measured color temperature is about 5800 K which is cold white.

This color temperature is measured straight underneath the light bulb. Below a graph showing the color temperature for different inclination angles.

Lamp measurement report – 9 Dec 2010



Color temperature as a function of inclination angle.

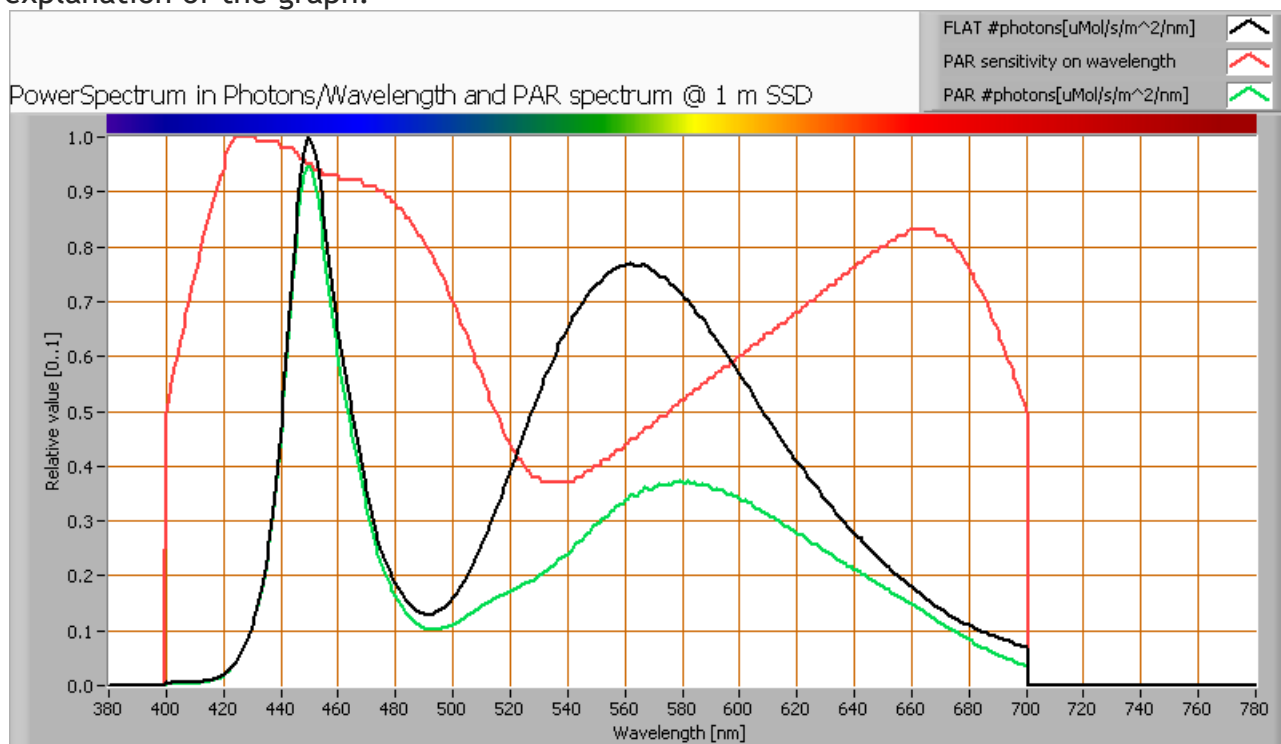
The measurement of CCT is measured for inclination angles up to 75° as beyond that angle the illuminance values are very low (< 5 lux).

The beam angle is maximally 120°, meaning a 60° inclination angle. In this area most of the light is present. The variation in correlated color temperature in this area is about 2 %.

Lamp measurement report – 9 Dec 2010

PAR value and PAR spectrum

To make a statement how well the light of this light bulb is for growing plants, the PAR-area needs to be determined. See the OLiNo website how this all is determined and the explanation of the graph.



The photon spectrum, then the sensitivity curve and as result the final PAR spectrum of the light of this light bulb

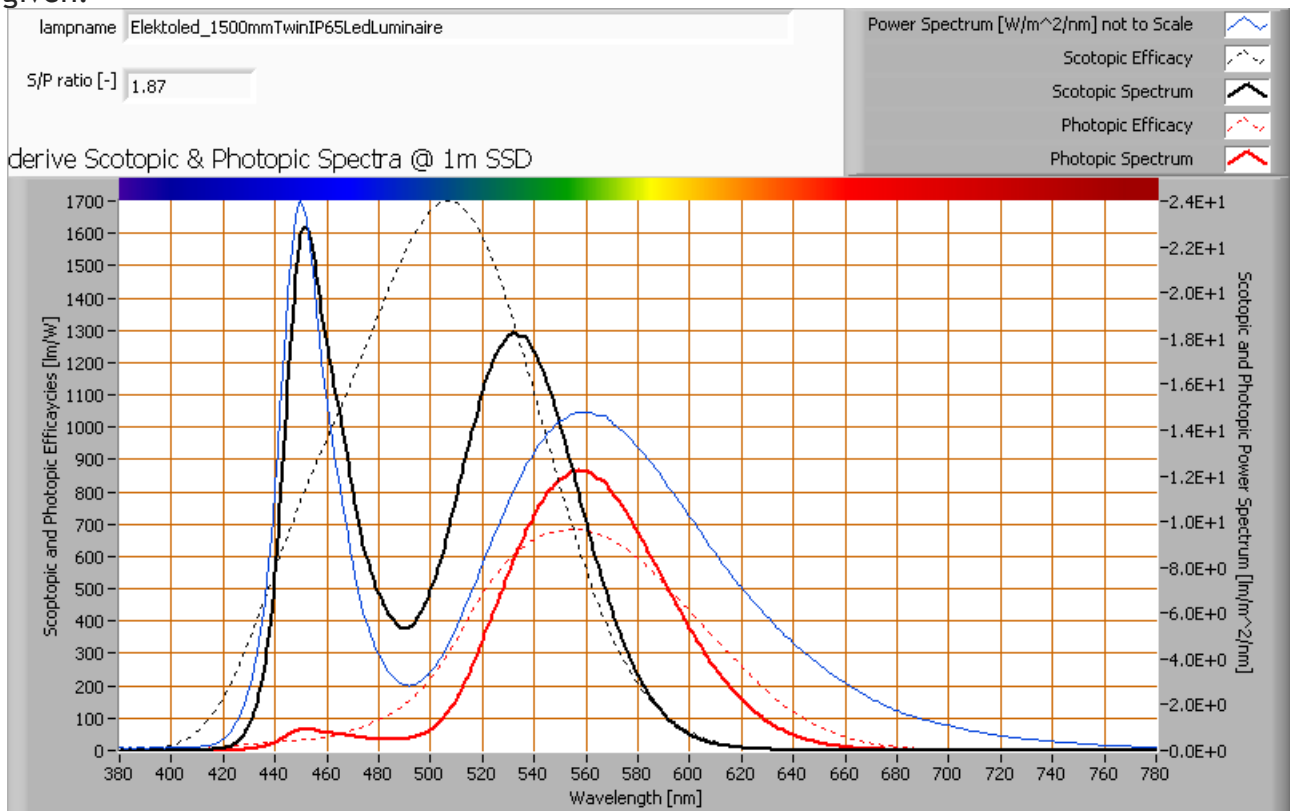
parameter	value	unit
PAR-number	8.0	$\mu\text{Mol/s/m}^2$
PAR-photon current	26.9	$\mu\text{Mol/s}$
PAR-photon efficacy	0.6	$\mu\text{Mol/s/W}$

The PAR efficiency is 64 % (valid for the PAR wave length range of 400 - 700 nm). So maximally 64 % of the total of photons in the light is effectively used by the average plant (since the plant might not take 100 % of the photons at the frequency where its relative sensitivity is 100 %).

Lamp measurement report – 9 Dec 2010

S/P ratio

The S/P ratio and measurement is explained on the OliNo website. Here the results are given.



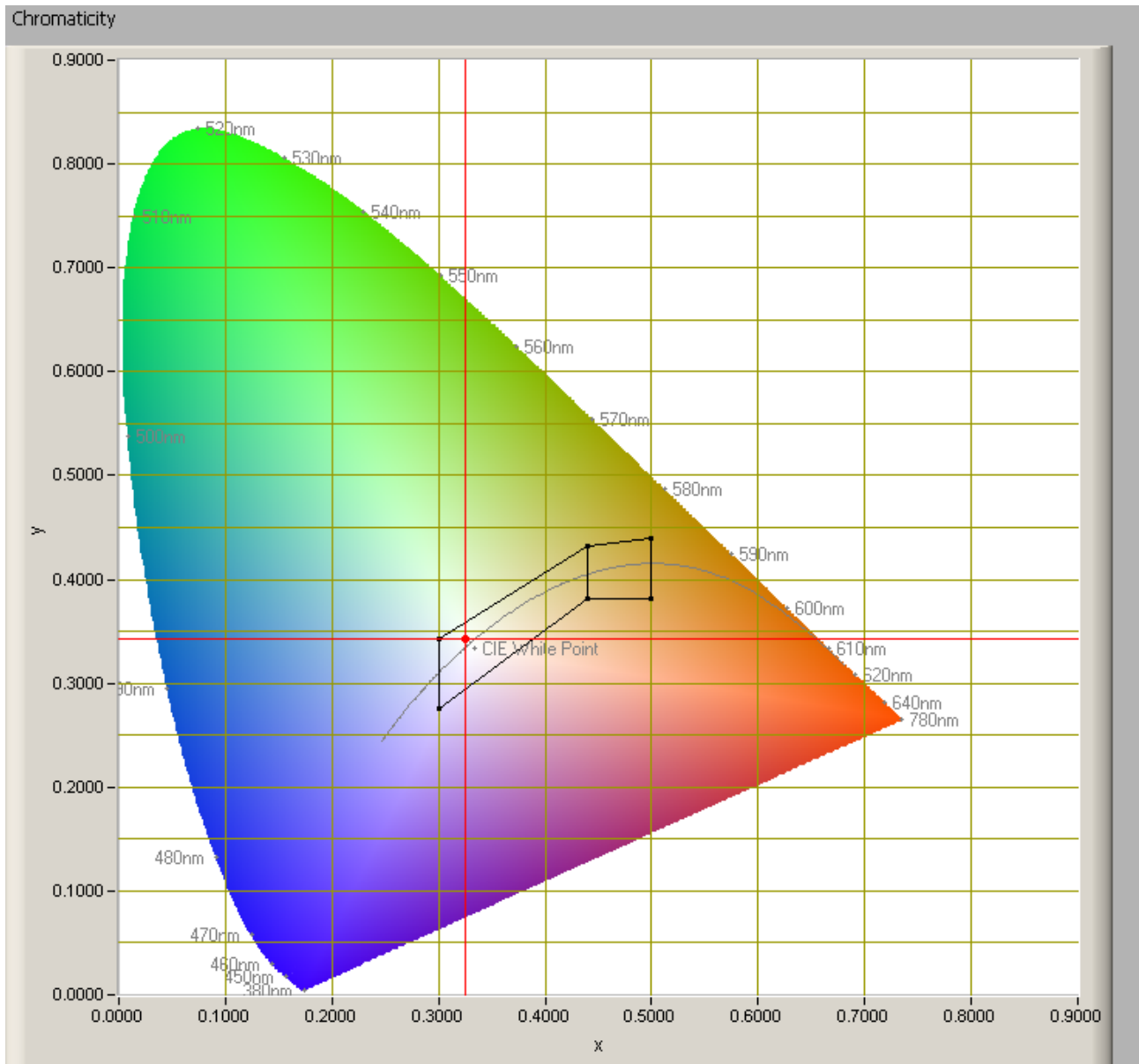
The power spectrum, sensitivity curves and resulting scotopic and photopic spectra (spectra energy content defined at 1 m distance).

The S/P ratio is 1.9.

More info on S/P ratio can be found on the OliNo website.

Lamp measurement report – 9 Dec 2010

Chromaticity diagram



The chromaticity space and the position of the lamp's color coordinates in it.

The light coming from this lamp is inside the area designated with class A. This Class A is an area that is defined for signal lamps, see also the OLiNo website.
Its coordinates are $x=0.3256$ and $y=0.3434$.

Lamp measurement report – 9 Dec 2010

Color Rendering Index (CRI) or also Ra

Herewith the image showing the CRI as well as how well different colors are represented (rendered). The higher the number, the better the resemblance with the color when a black body radiator would have been used (the sun, or an incandescent lamp). Practical information and also some critics about the CRI can be found on the OliNo website. Each color has an index R_x , and the first 8 indexes ($R_1 \dots R_8$) are averaged to compute the R_a which is equivalent to the CRI.

☐ manual

Reference Illuminant: Planckian radiator CCT: 5808 K

Chromaticity Difference DC= 1.2E-3

R1= 60.3	R8= 49.2	R_a (mean value of R1 - R8) 65.7
R2= 73.5	R9= -59.6	
R3= 79.2	R10= 33.9	
R4= 61.8	R11= 52.3	
R5= 61.2	R12= 29.3	
R6= 60.6	R13= 62.9	
R7= 79.8	R14= 88.1	

CRI of the light of this lightbulb.

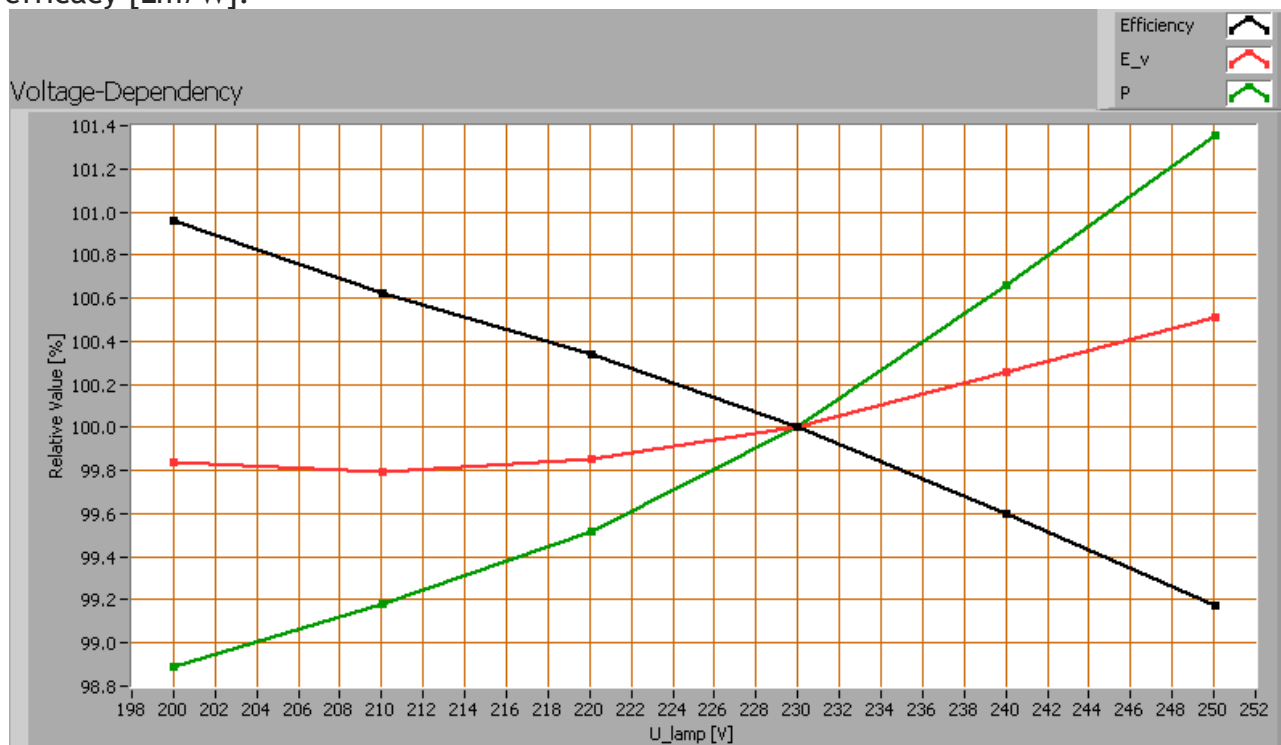
The value of 66 is lower than 80 which is considered a minimum value for indoor usage. Note: the chromaticity difference is 0.0012 indicates the distance to the Planckian Locus. There is no norm yet that states what the max deviation from white light is allowed to be. A reference with signal lights as a reference is given in the chromaticity diagram.

Voltage dependency

The dependency of a number of lamp parameters on the lamp voltage is determined. For this, the lamp voltage has been varied and its effect on the following light bulb parameters measured: illuminance E_v [lx], the lamp power P [W] and the luminous

Lamp measurement report – 9 Dec 2010

efficacy [lm/W].



Lamp voltage dependencies of certain light bulb parameters, where the value at 230 V is taken as 100 %.

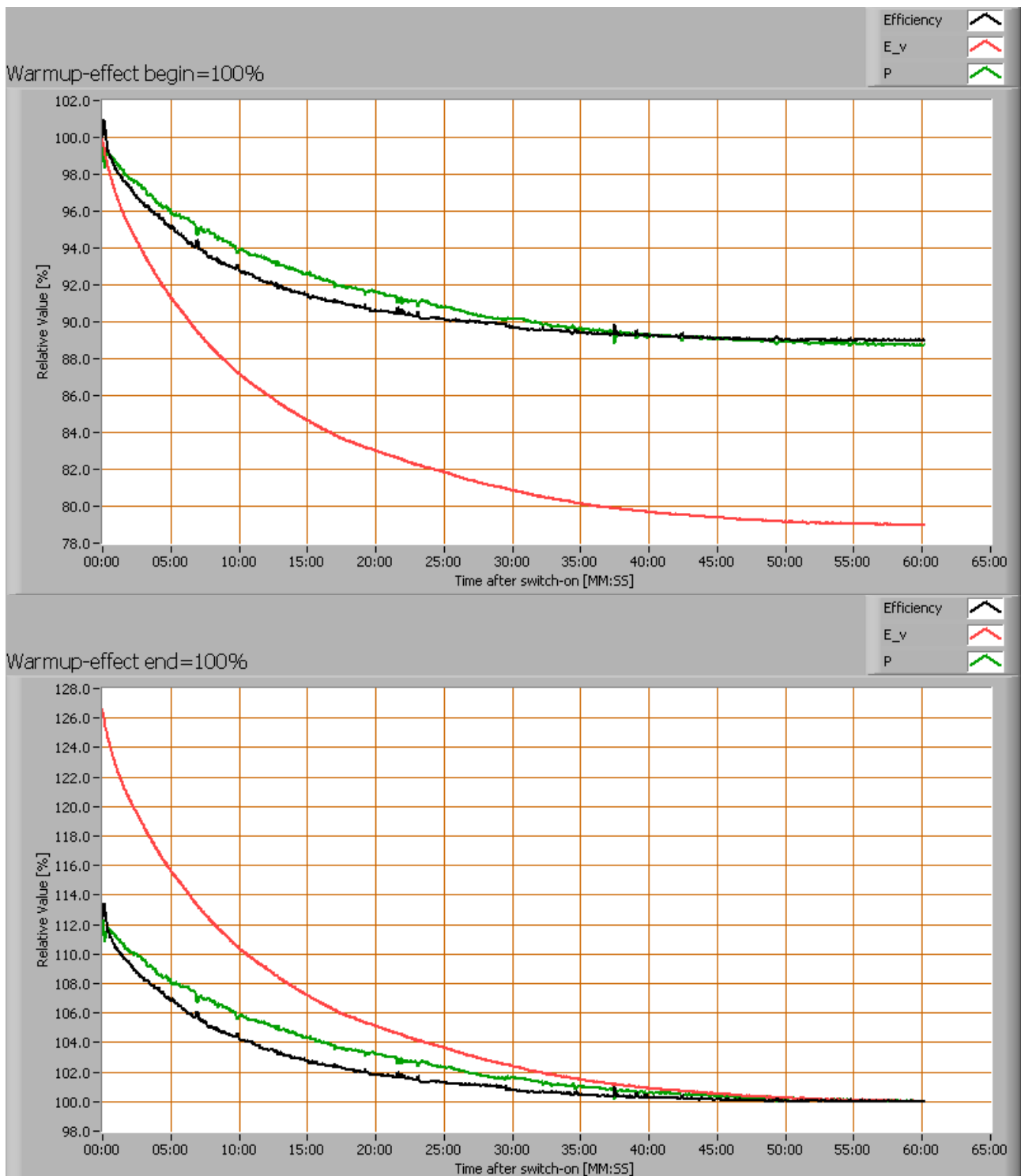
The illuminance and consumed power do not vary significantly when the voltage is varied.

When the voltage at 230 V varies with + and - 5 V, then the illuminance varies < 0.2 %, so when abrupt voltage changes occur this effect is not visible in the illuminance output.

Warm up effects

After switch on of a cold lamp, the effect of heating up of the lamp is measured on illuminance E_v [lx], the lamp power P [W] and the luminous efficacy [lm/W].

Lamp measurement report – 9 Dec 2010



Effect of warming up on different light bulb parameters. At top the 100 % level is put at begin, and at bottom at the end.

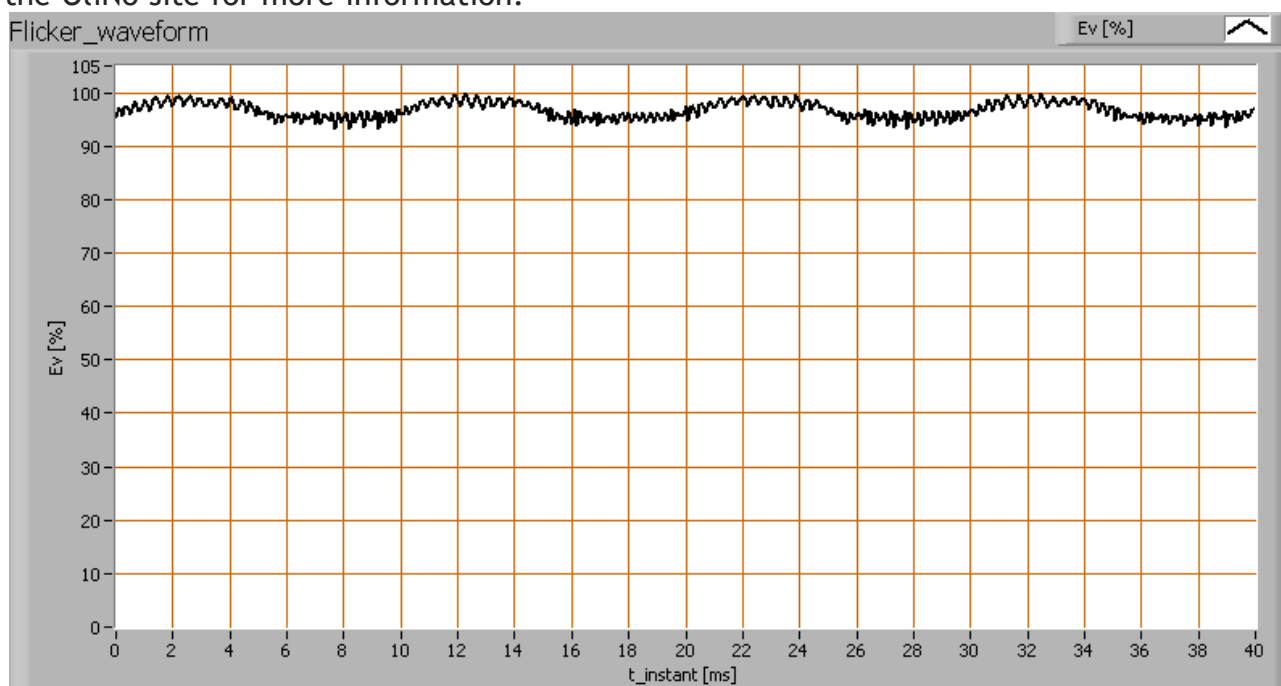


Lamp measurement report – 9 Dec 2010

The warm up time is about 30 minutes. During that time the illuminance decreases with about 22 % and the consumed power with about 11 %.

Measure of flickering

An analysis is done on the measure of flickering of the light output by this light bulb. See the OliNo site for more information.



The measure of fast illuminance variation of the light of the light bulb

parameter	value	unit
Flicker frequency	99.9	Hz
Illuminance modulation index	3	%

The illuminance modulation index is computed as: $(\max_Ev - \min_Ev) / (\max_Ev + \min_Ev)$.

Disclaimer

The information in this OliNo report is created with the utmost care. Despite this, the information



Lamp measurement report – 9 Dec 2010

could contain inaccuracies. OliNo cannot be held liable in this instance nor can the data in this report be legally binding.

We strive to adhere to all of the conditions of any copyright holder in the publication of any illustration/article or item. In the event that we unintentionally violate said copyright holder's conditions in our articles, we kindly ask to be contacted here at OliNo so that we can resolve any disputes, issues or misunderstandings.

License

It is permitted ONLY to use or publish this report in its entirety and in unaltered form via internet or other digital or written media in any form. To guarantee the reliability and accuracy of the report, it is strictly probited to change or alter parts of the report and/or republish it in a modified content.