

Lamp measurement report – 25 Nov 2010

led panel FL62-NW-i33-CABA

by

Fledlight©



Lamp measurement report – 25 Nov 2010

Summary measurement data


parameter	meas. result	remark
Color temperature	4001 K	Neutral white
Luminous intensity I_v	1149 Cd	Measured straight underneath the lamp.
Illuminance modulation index	21 %	Measured straight underneath the lamp. Is a measure for the amount of flickering.
Beam angle	88 deg	82° for all the C0-C180-plane (perpendicular to the length direction of the lamp) and 88° for the C90-C270 plane, which is along the length direction of the lamp.
Power P	36.5 W	
Power Factor	0.98	For every 1 kWh net power consumed, there has been 0.2 kVAhr for reactive power.
THD	8 %	Total Harmonic Distortion
Luminous flux	2273 Lm	
Luminous efficacy	62 Lm/W	
EU-label classification	B	The energy class, from A (more efficient) to G (least efficient).
CRI_Ra	78	Color Rendering Index.
Coordinates chromaticity diagram	x=0.3819 and y=0.3837	
Fitting	230V	This lamp is connected directly to the 230 V grid voltage.
PAR-value	10.2 $\mu\text{Mol/s/m}^2$	The number of photons seen by an average plant when it is lit by the light of this light bulb. Value valid at 1 m distance from light bulb.

Lamp measurement report – 25 Nov 2010

PAR-photon efficacy	0.6 $\mu\text{Mol/s/W}_e$	The total emitted number of photons by this light, divided by its consumption in W. It indicates a kind of efficacy in generating photons.
S/P ratio	1.6	This factor indicates the amount of times more efficient the light of this light bulb is perceived under scotopic circumstances (low environmental light level).
L x W x H external dimensions	650 x 255 x 38 mm	External dimensions of the lamp.
L x W luminous area	610 x 173 mm	Dimensions of the luminous area (used in Eulumdat file). This is the surface of the prismatic cover.
General remarks		<p>The ambient temperature during the whole set of measurements was 23.5 - 24.9 deg C.</p> <p>The temperature of the housing gets about 32 degrees hotter than ambient temperature, at the front of the luminaire, there where the power supply is seated. The rest of the front plate only gets about 8 degrees hotter than ambient.</p> <p>Warm up effect: during the warm up time the illuminance decreases with less than 5 % and the consumed power with about 4 %.</p> <p>Voltage dependency: the power consumption and illuminance vary insignificantly, when the power voltage varies between 200-250 V.</p> <p>At the end of the article an additional photo.</p>

Lamp measurement report – 25 Nov 2010

Overview table

m.	Ø 50%		CO-180: 82° C90-270: 88° 	E (lux)	Luminaire Efficacy
	CO-180	C90-270			62 (lumen per Watt)
0.25	0.43	0.48		18386	Half-peak diam CO-180
0.5	0.87	0.96		4596	1.74 x diameter(m)
1	1.74	1.92		1149	Half-peak diam C90-270
1.5	2.6	2.88		511	1.92 x diameter(m)
3	5.21	5.76		128	Illuminance
4	6.94	7.68		72	1149 / distance ² (lux)
5	8.68	9.6		46	Total Output
					2273 (lumen)

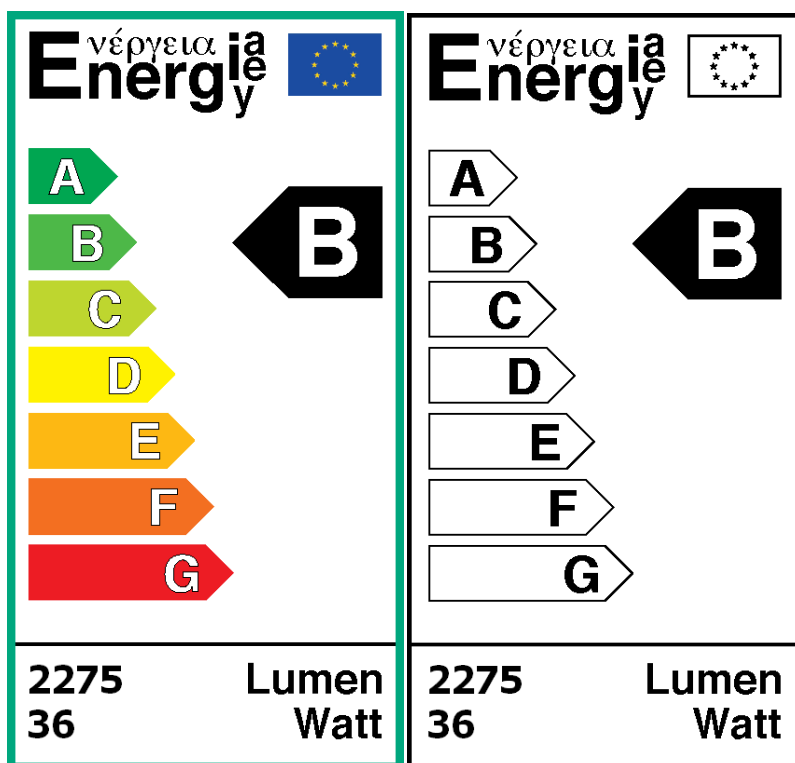
The overview table is explained on the OLiNo website.

Please note that this overview table makes use of calculations, use this data with care as explained on the OLiNo site. E (lux) values are not accurate, when within 5 x 634 mm (diagonal measure) ≈ 3200 mm. Within this distance from the lamp, the measured lux values will be less than the computed values in this overview as the measurements are then within the near field of the lamp.

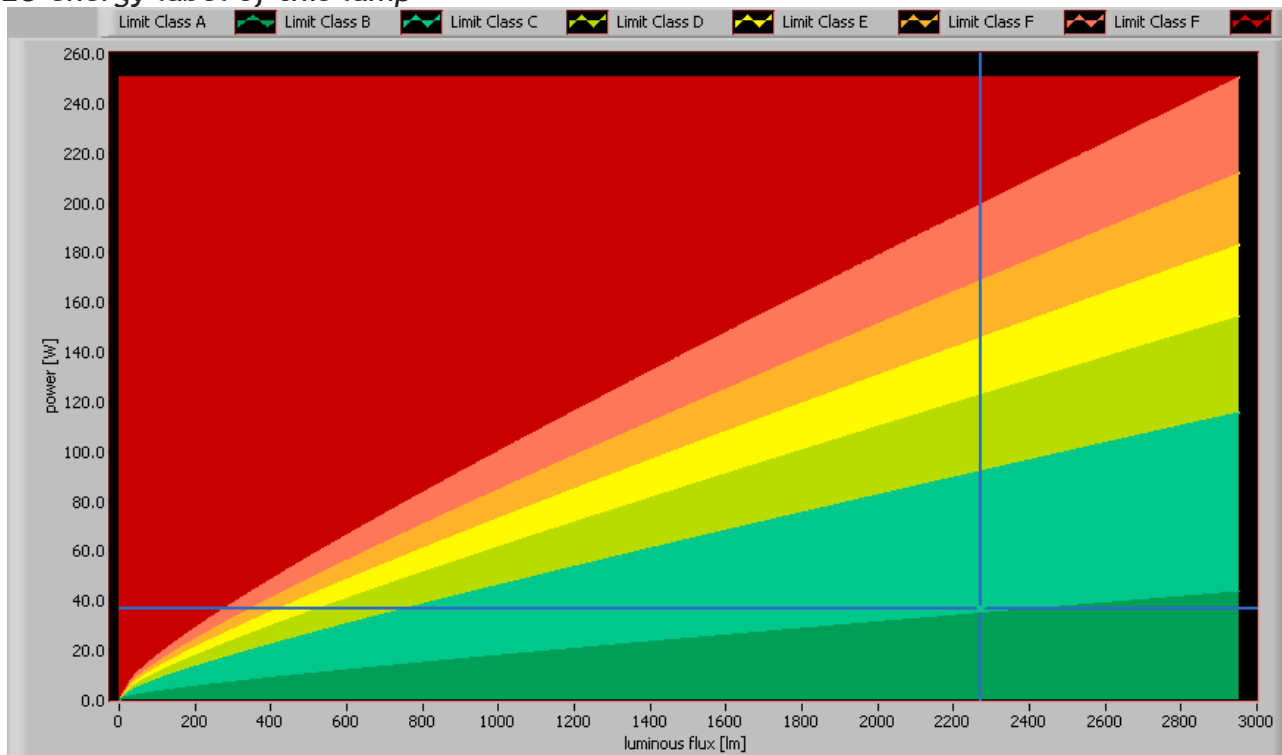
EU Energy label classification

With the measurement results of the luminous flux and the consumed power the classification on energy of this lamp is calculated. This information is requested in the EU for certain household lamps, see also the OLiNo site that explains for which lamps it is requested, how the label looks like and what information it needs to contain. Herewith the labels for this lamp in color and black and white.

Lamp measurement report – 25 Nov 2010



EU energy label of this lamp

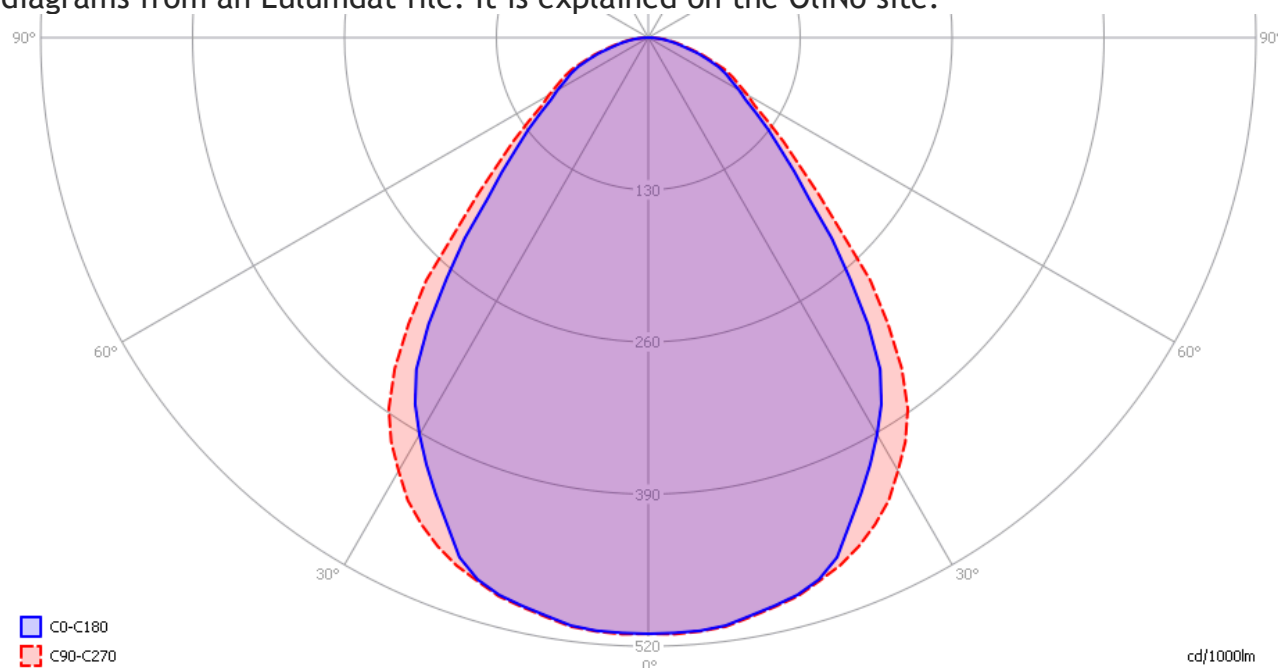


The lamp's performance in the lumen-Watt field, with the energy efficacy fields indicated.

Lamp measurement report – 25 Nov 2010

Eulumdat light diagram

This light diagram below comes from the program Qlumedit, that extracts these diagrams from an Eulumdat file. It is explained on the OliNo site.



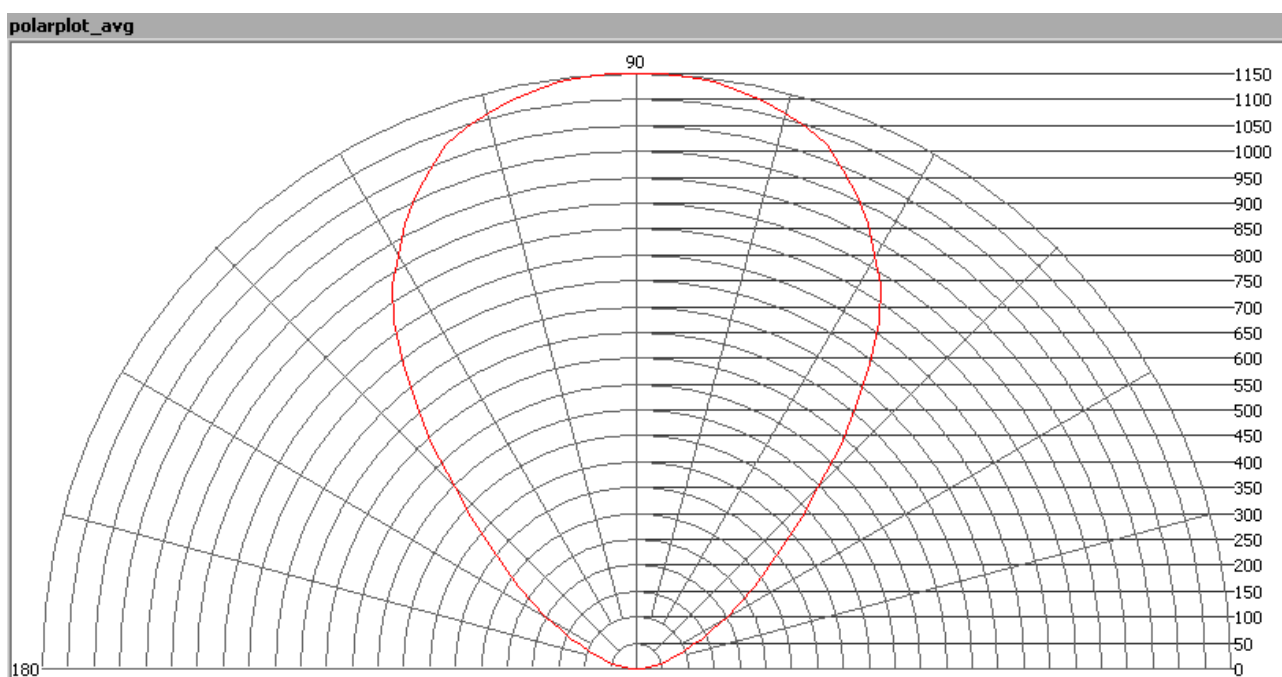
The light diagram giving the radiation pattern.

It indicates the luminous intensity around the light bulb. The C0-C180 plane is along the width direction of the lamp) and is somewhat smaller than the beam angle in the C90-C270 plane (along the length direction of the lamp).

Illuminance E_v at 1 m distance, or luminous intensity I_v

Herewith the plot of the *averaged* luminous intensity I_v as a function of the inclination angle with the light bulb.

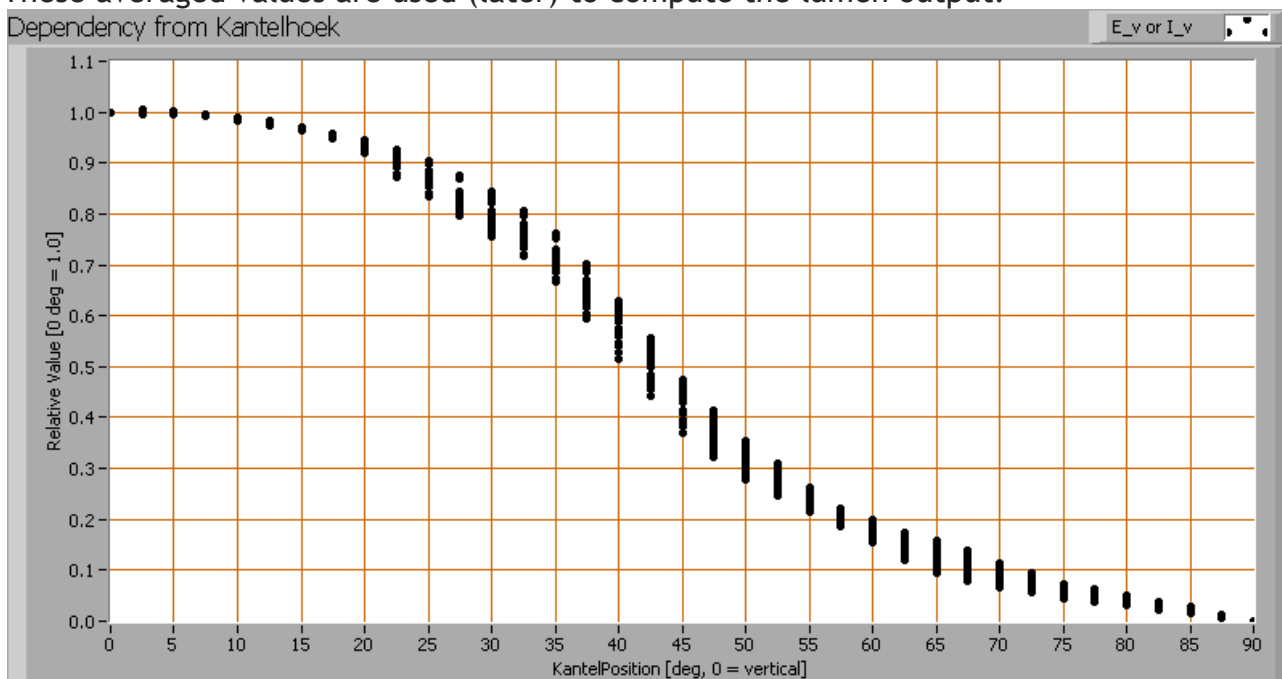
Lamp measurement report – 25 Nov 2010



The radiation pattern of the light bulb.

This radiation pattern is the average of the light output of the light diagram given earlier. Also, in this graph the luminous intensity is given in Cd.

These averaged values are used (later) to compute the lumen output.



Intensity data of every measured turn angle at each inclination angle.



Lamp measurement report – 25 Nov 2010

This plot shows per inclination angle the intensity measurement results for each turn angle at that inclination angle. There normally are differences in illuminance values for different turn angles. However for further calculations the averaged values will be used. When using the average values per inclination angle, the beam angle can be computed, being 82° for the C0-C180 and 88° for the C90-C270 plane.

Luminous flux

With the averaged illuminance data at 1 m distance, taken from the graph showing the averaged radiation pattern, it is possible to compute the luminous flux.

The result of this computation for this light spot is a luminous flux of 2273 Lm.

Luminous efficacy

The luminous flux being 2273 Lm, and the power of the light bulb being 36.5 W, yields a luminous efficacy of 62 Lm/W.

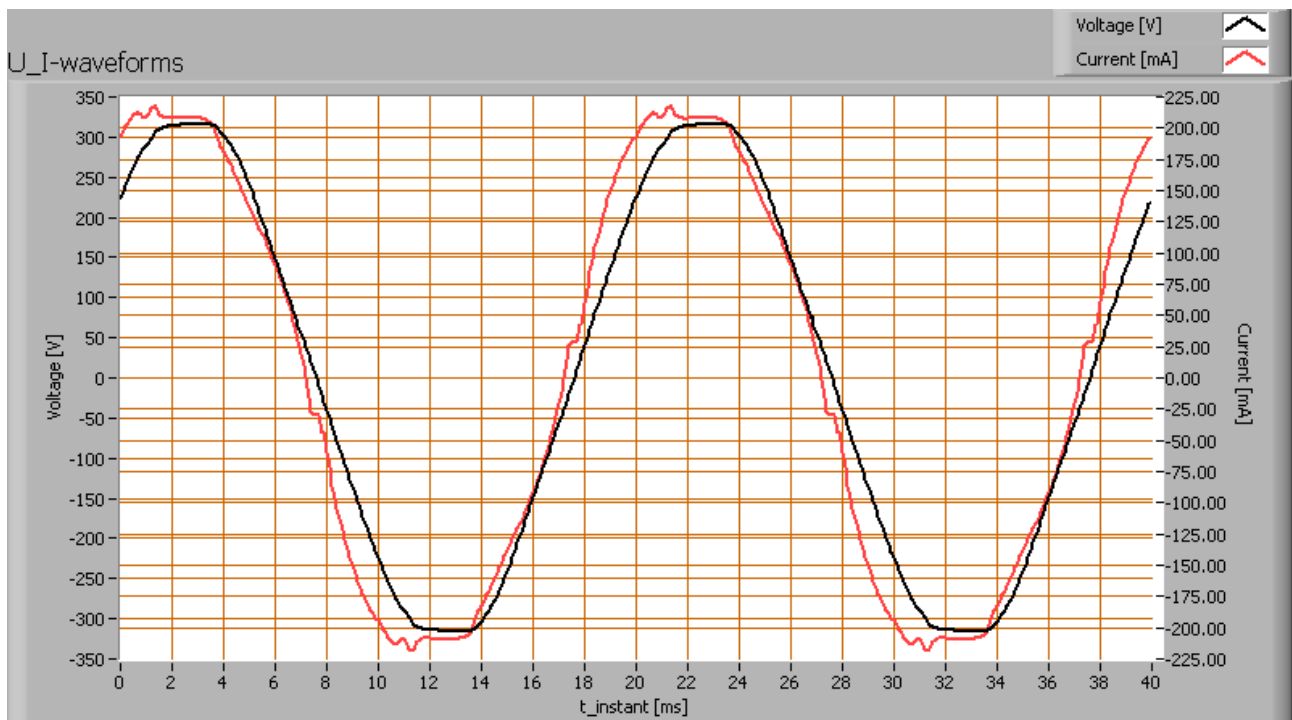
Electrical properties

A power factor of 0.98 means that for every 1 kWh net power consumed, a reactive component of 0.2 kVAr was needed.

Lamp voltage	230 VAC
Lamp current	161 mA
Power P	36.5 W
Apparent power S	37.1 VA
Power factor	0.98

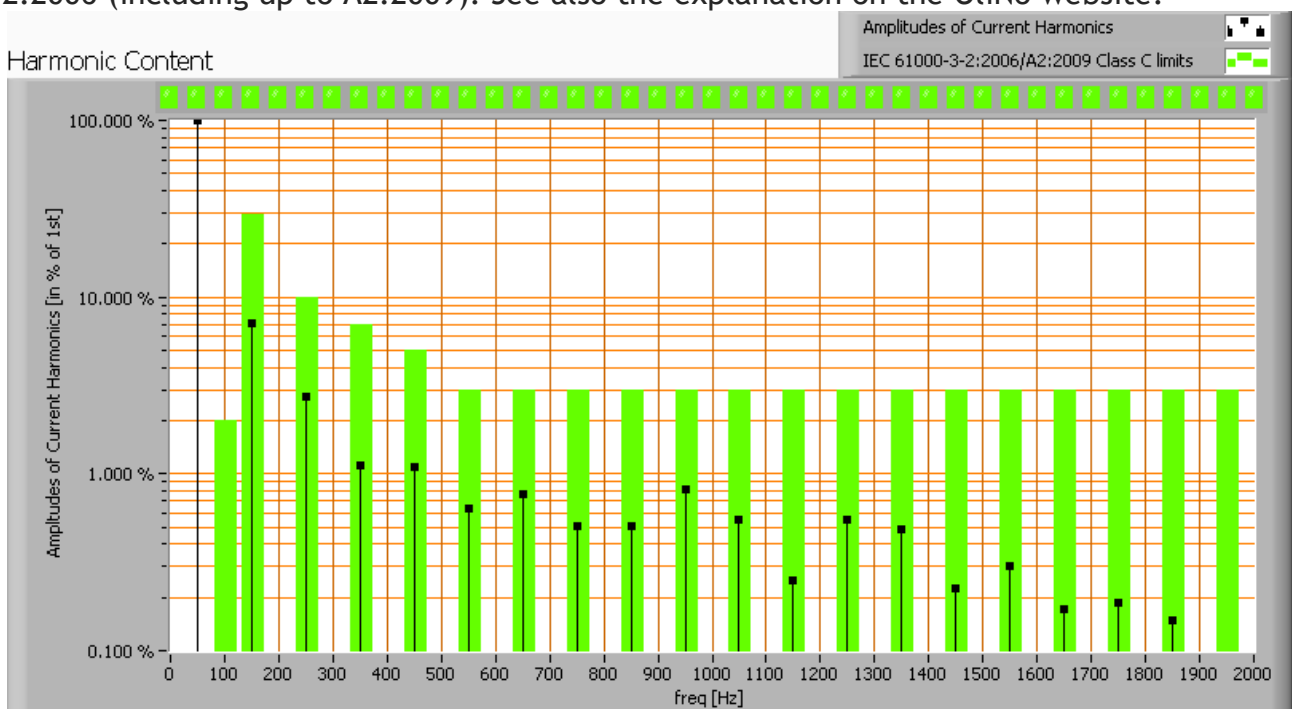
Of this light bulb the voltage across and the resulting current through it are measured and graphed. See the OLiNo site how this is obtained.

Lamp measurement report – 25 Nov 2010



Voltage across and current through the lightbulb

This waveforms have been checked on requirements posed by the norm IEC 61000-3-2:2006 (including up to A2:2009). See also the explanation on the OliNo website.



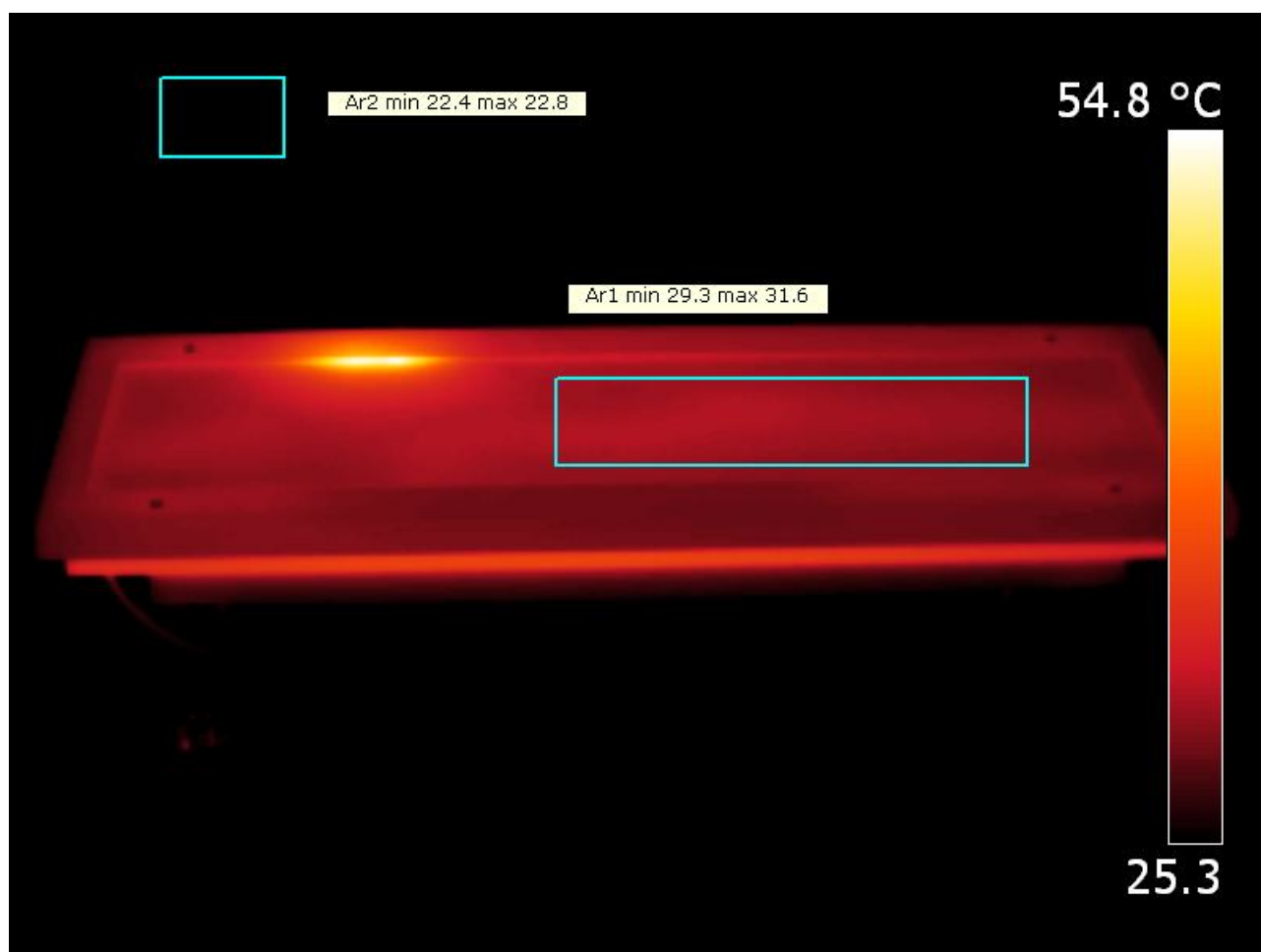
Lamp measurement report – 25 Nov 2010

Harmonics in the current waveform and checked against IEC61000-3-2:2006 and A2:2009

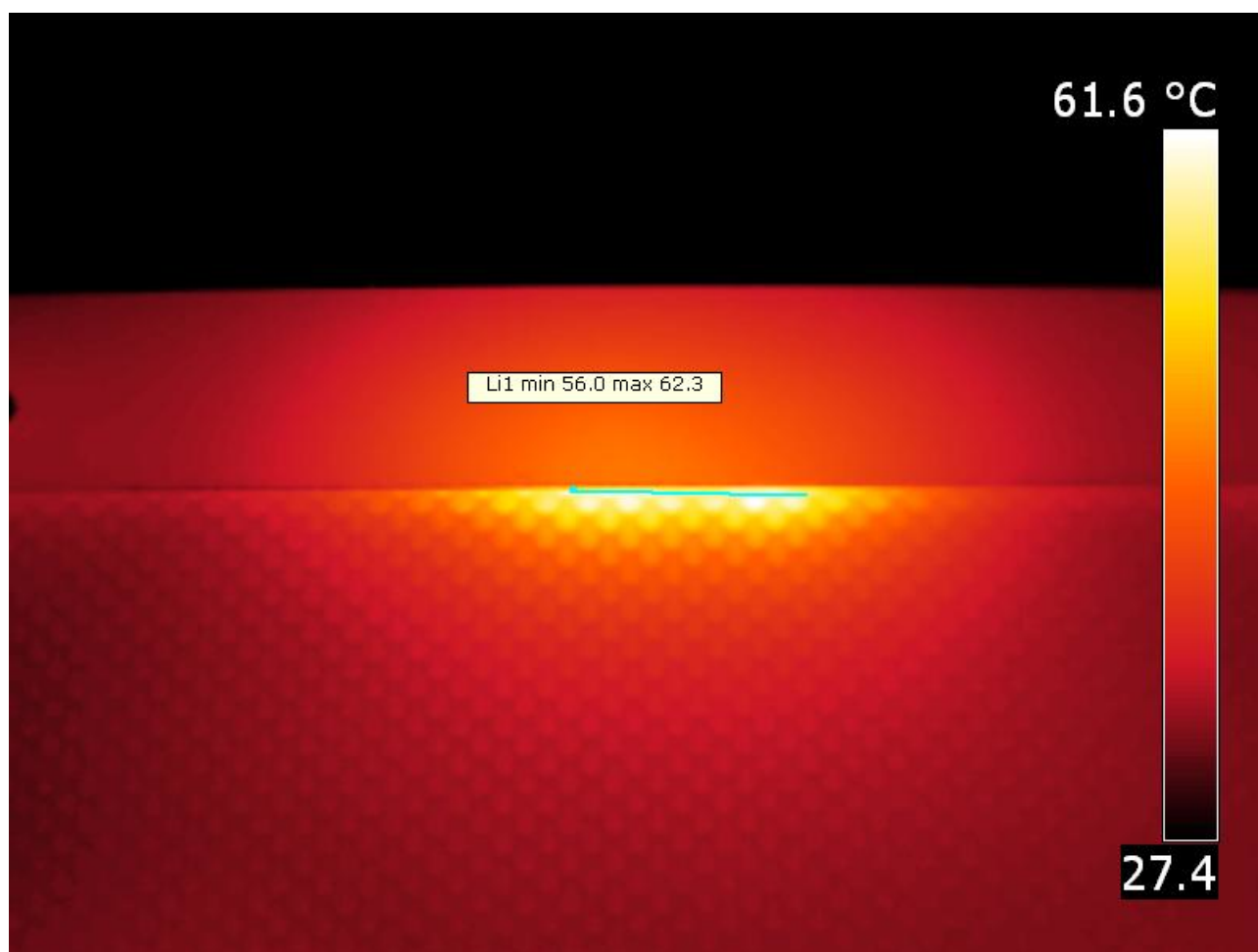
There are limits for the harmonics for lighting equipment > 25 W and these are easily fulfilled.

The Total Harmonic Distortion of the current is computed as 8 %.

Temperature measurements lamp



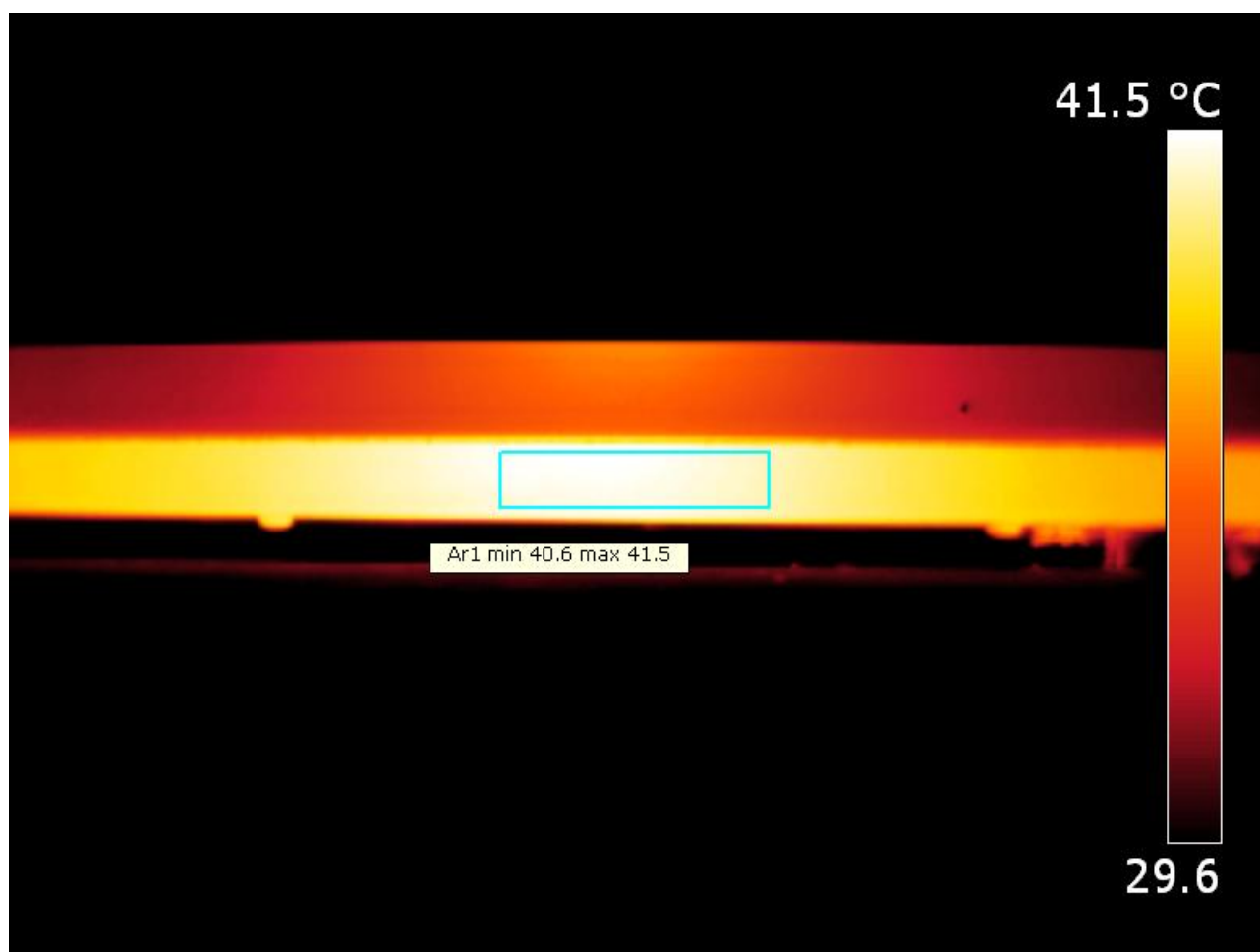
Lamp measurement report – 25 Nov 2010



Temperature measurement from the front

The prismatic cover is made of a sort of plastic which has a high emissivity. The hottest temperature is found there where the power supply is seated.

Lamp measurement report – 25 Nov 2010



Temperature measurement back side

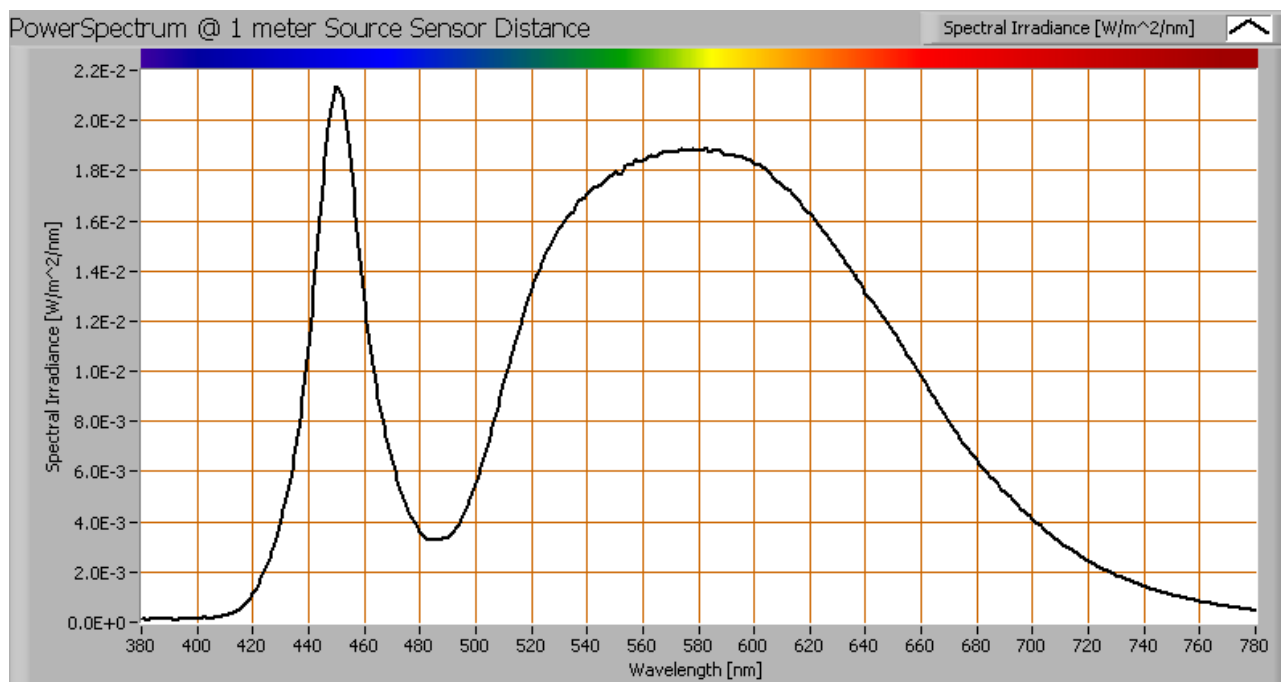
The material of the housing has a high emissivity, and also is hottest there where the power supply is positioned.

status lamp	> 2 hours on
ambient temperature	22.5 deg C
reflected background temperature	22.5 deg C
camera	Flir T335
emissivity	0.95 ⁽¹⁾
measurement distance	1 m
IFOV _{geometric}	0.136 mm per 0.1 m distance
NETD (thermal sensitivity)	50 mK

⁽¹⁾ See the text for explanation.

Lamp measurement report – 25 Nov 2010

Color temperature and Spectral power distribution

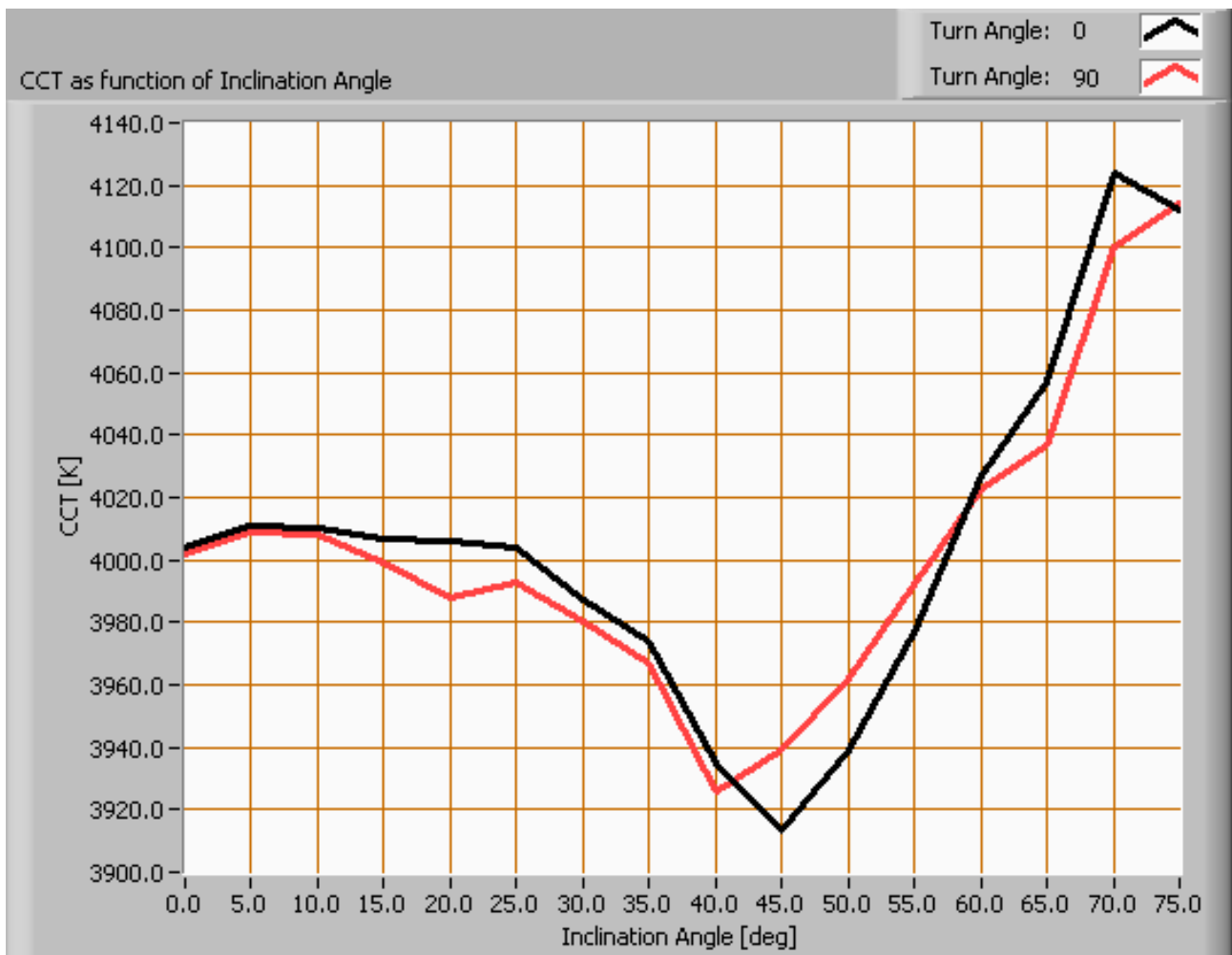


The spectral power distribution of this light bulb, energies on y-axis valid at 1 m distance.

The measured color temperature is about 4000 K which is neutral white.

This color temperature is measured straight underneath the light bulb. Below a graph showing the color temperature for different inclination angles.

Lamp measurement report – 25 Nov 2010



Color temperature as a function of inclination angle.

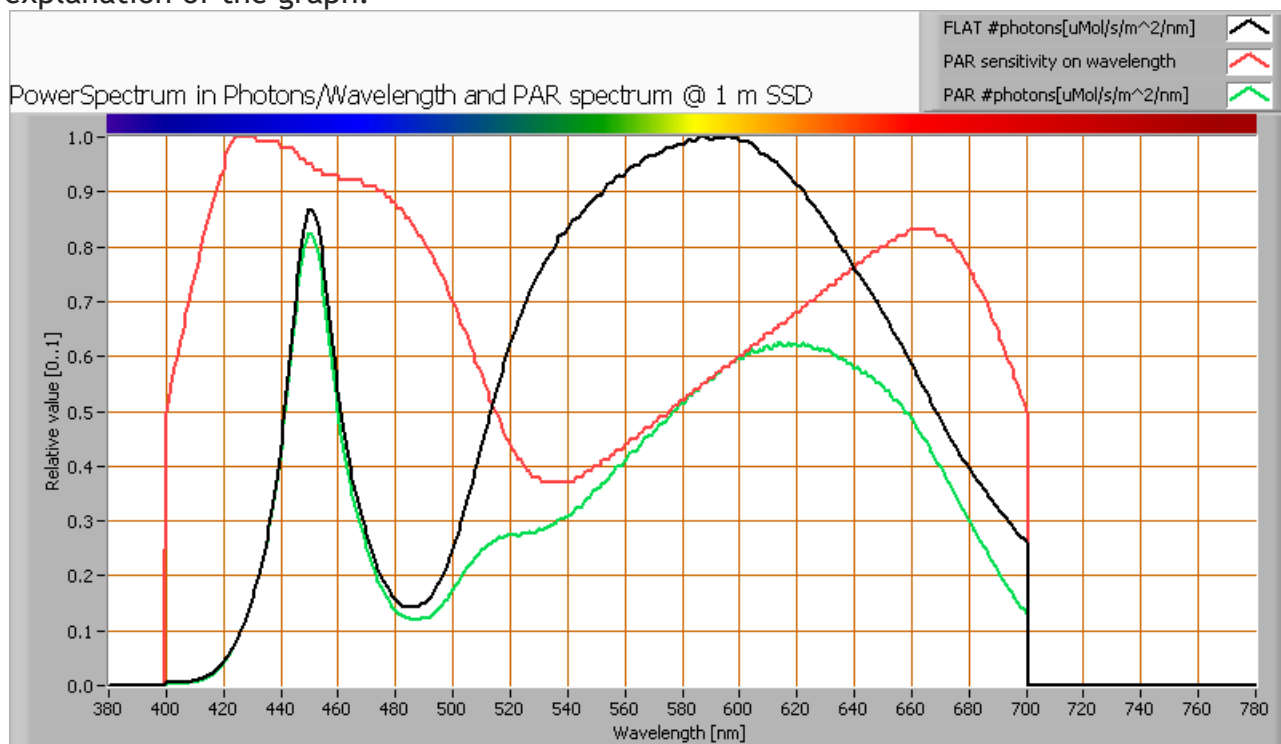
The measurement of CCT is measured for inclination angles up to 75°. Beyond this angle the illuminance is very low (< 5 lux).

The beam angle is 88°, meaning a 44° inclination angle. In this area most of the light is present. The variation in correlated color temperature in this area is 2 %.

Lamp measurement report – 25 Nov 2010

PAR value and PAR spectrum

To make a statement how well the light of this light bulb is for growing plants, the PAR-area needs to be determined. See the OLiNo website how this all is determined and the explanation of the graph.



The photon spectrum, then the sensitivity curve and as result the final PAR spectrum of the light of this light bulb

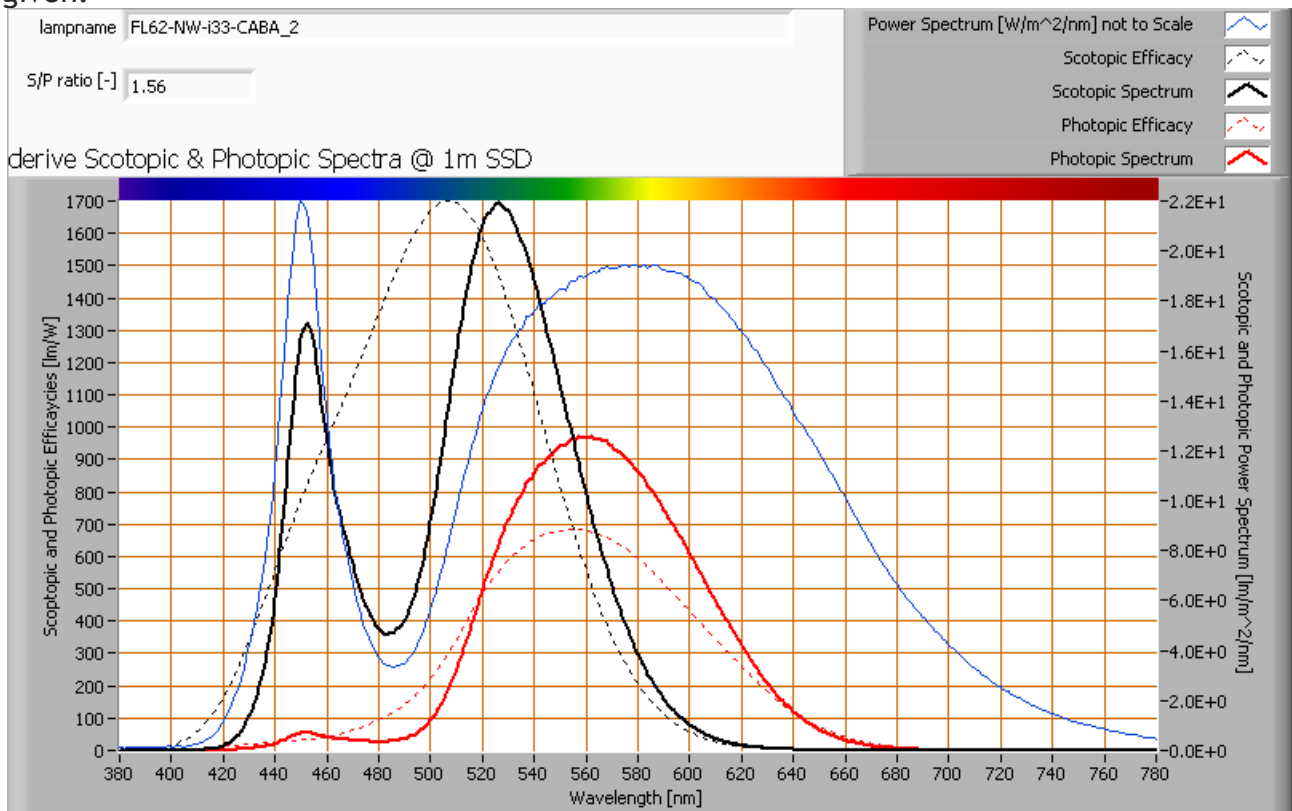
parameter	value	unit
PAR-number	10.2	μMol/s/m ²
PAR-photon current	20.3	μMol/s
PAR-photon efficacy	0.6	μMol/s/W

The PAR efficiency is 64 % (valid for the PAR wave length range of 400 - 700 nm). So maximally 64 % of the total of photons in the light is effectively used by the average plant (since the plant might not take 100 % of the photons at the frequency where its relative sensitivity is 100 %).

Lamp measurement report – 25 Nov 2010

S/P ratio

The S/P ratio and measurement is explained on the OliNo website. Here the results are given.



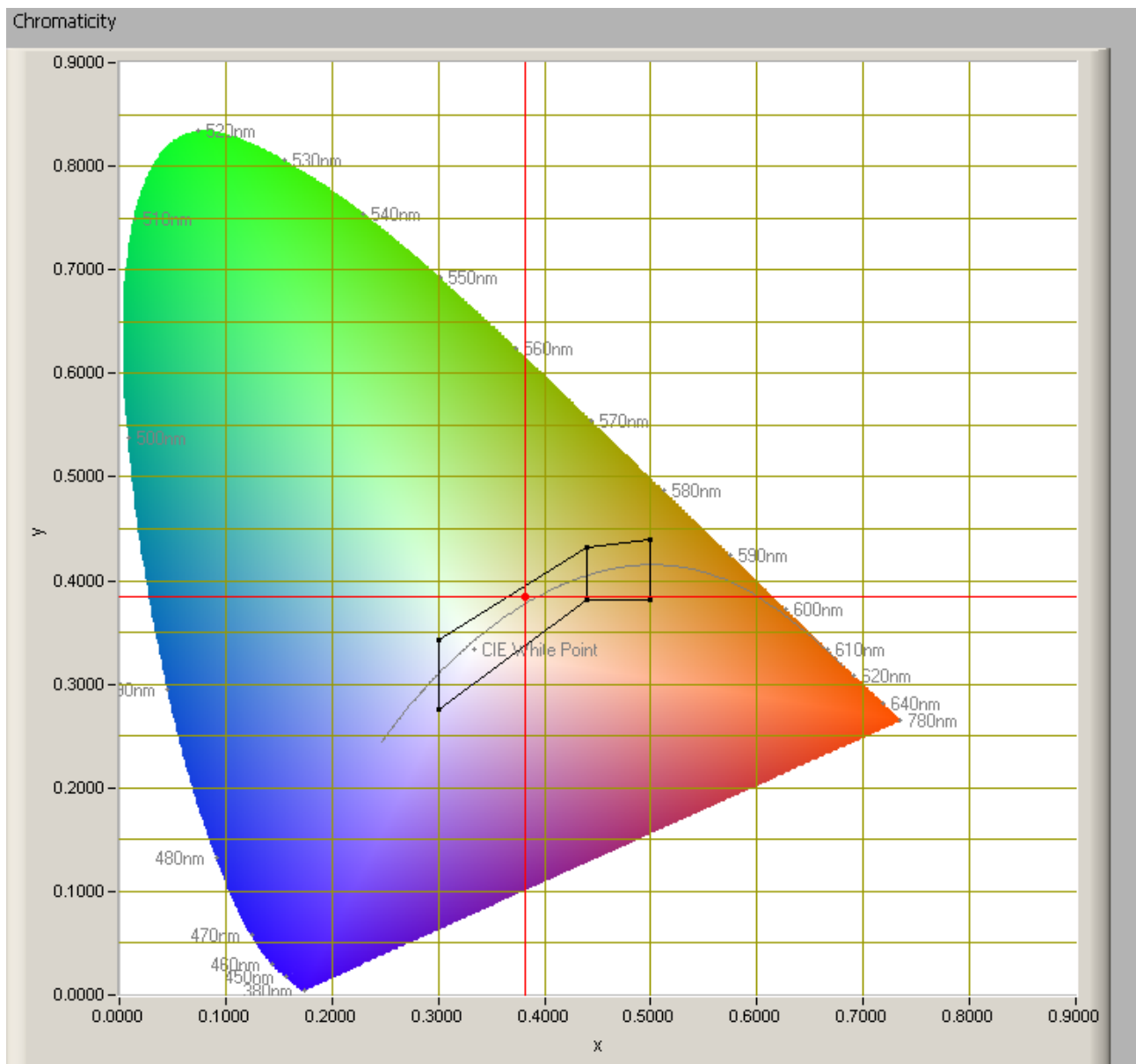
The power spectrum, sensitivity curves and resulting scotopic and photopic spectra (spectra energy content defined at 1 m distance).

The S/P ratio is 1.6.

More info on S/P ratio can be found on the OliNo website.

Lamp measurement report – 25 Nov 2010

Chromaticity diagram



The chromaticity space and the position of the lamp's color coordinates in it.

The light coming from this lamp is inside the area of class A. This is an area defined for signal lamps, see also the OliNo website.

Its coordinates are $x=0.3819$ and $y=0.3837$.

Lamp measurement report – 25 Nov 2010

Color Rendering Index (CRI) or also Ra

Herewith the image showing the CRI as well as how well different colors are represented (rendered). The higher the number, the better the resemblance with the color when a black body radiator would have been used (the sun, or an incandescent lamp). Practical information and also some critics about the CRI can be found on the OliNo website.

Each color has an index Rx, and the first 8 indexes (R1 .. R8) are averaged to compute the Ra which is equivalent to the CRI.

☐ manual

Reference Illuminant: Planckian radiator CCT: 4001 K

Chromaticity Difference DC= 2.8E-3

R1= 76.2	R8= 67	Ra (mean value of R1 - R8) 77.7
R2= 81.8	R9= 8.8	
R3= 84.5	R10= 54.9	
R4= 77.5	R11= 72.8	
R5= 74.5	R12= 43.7	
R6= 72.9	R13= 76.8	
R7= 86.9	R14= 90.8	

CRI of the light of this lightbulb.

The value of 78 is (marginally) lower than to the value 80 which is considered a minimum value for indoor usage.

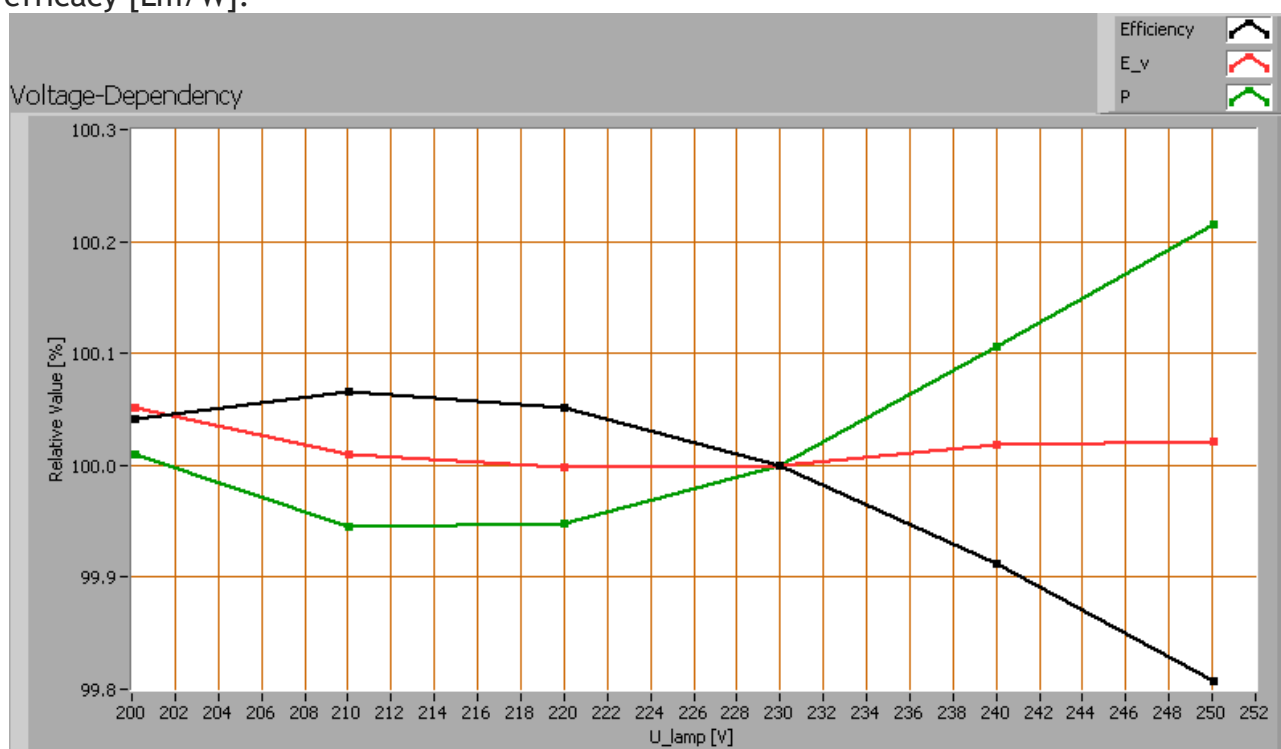
Note: the chromaticity difference is 0.0028 indicates the distance to the Planckian Locus. There is no norm yet that states what the max deviation from white light is allowed to be. A reference with signal lights as a reference is given in the chromaticity diagram.

Voltage dependency

The dependency of a number of lamp parameters on the lamp voltage is determined. For this, the lamp voltage has been varied and its effect on the following light bulb

Lamp measurement report – 25 Nov 2010

parameters measured: illuminance E_v [lx], the lamppower P [W] and the luminous efficacy [lm/W].



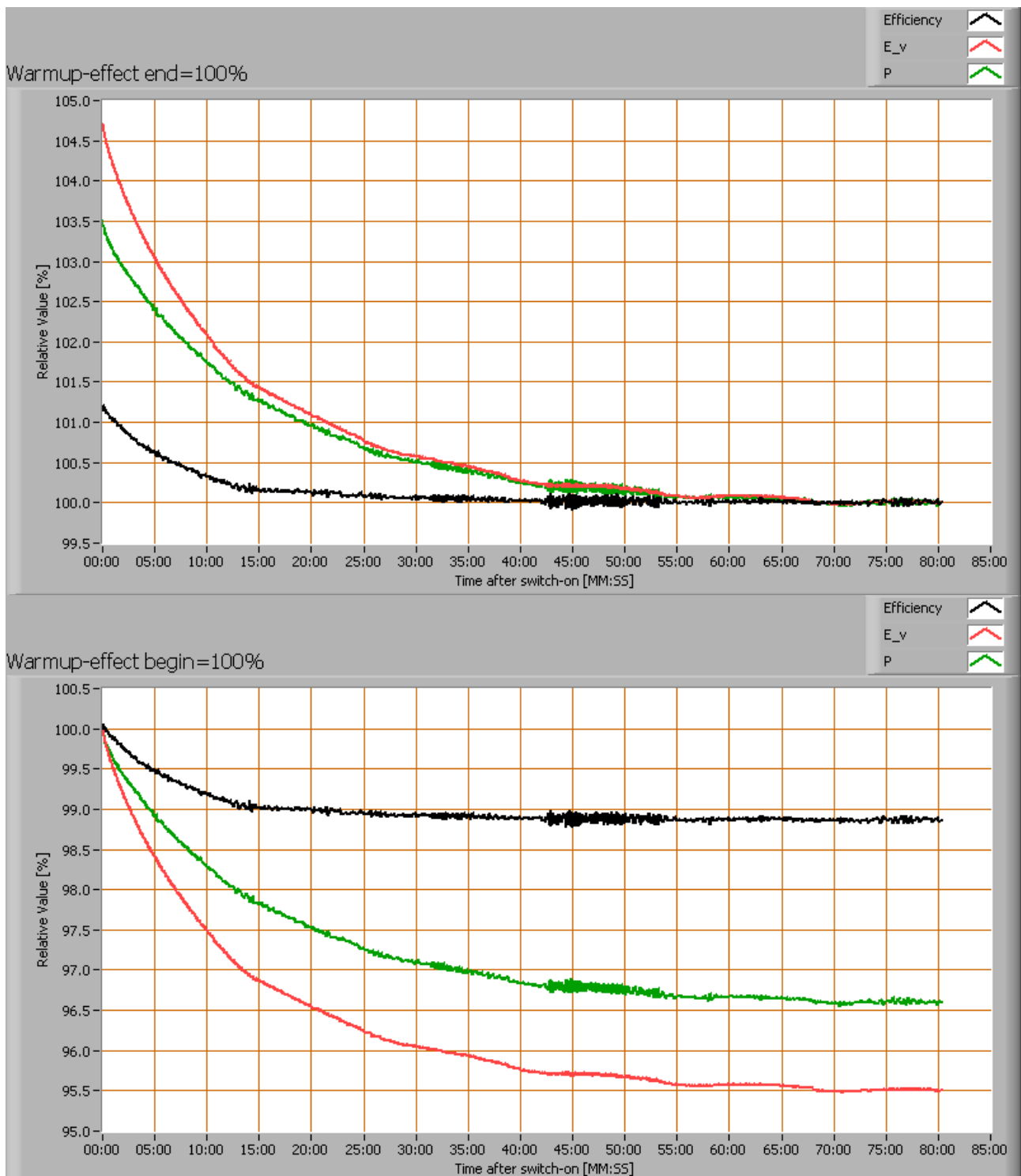
Lamp voltage dependencies of certain light bulb parameters, where the value at 230 V is taken as 100 %.

The illuminance and consumed power vary insignificantly when the voltage is varied. When the voltage at 230 V varies with + and - 5 V, then the illuminance varies < 0.1 %, so when abrupt voltage changes occur this effect is not visible in the illuminance output.

Warm up effects

After switch on of a cold lamp, the effect of heating up of the lamp is measured on illuminance E_v [lx], the lamppower P [W] and the luminous efficacy [lm/W].

Lamp measurement report – 25 Nov 2010



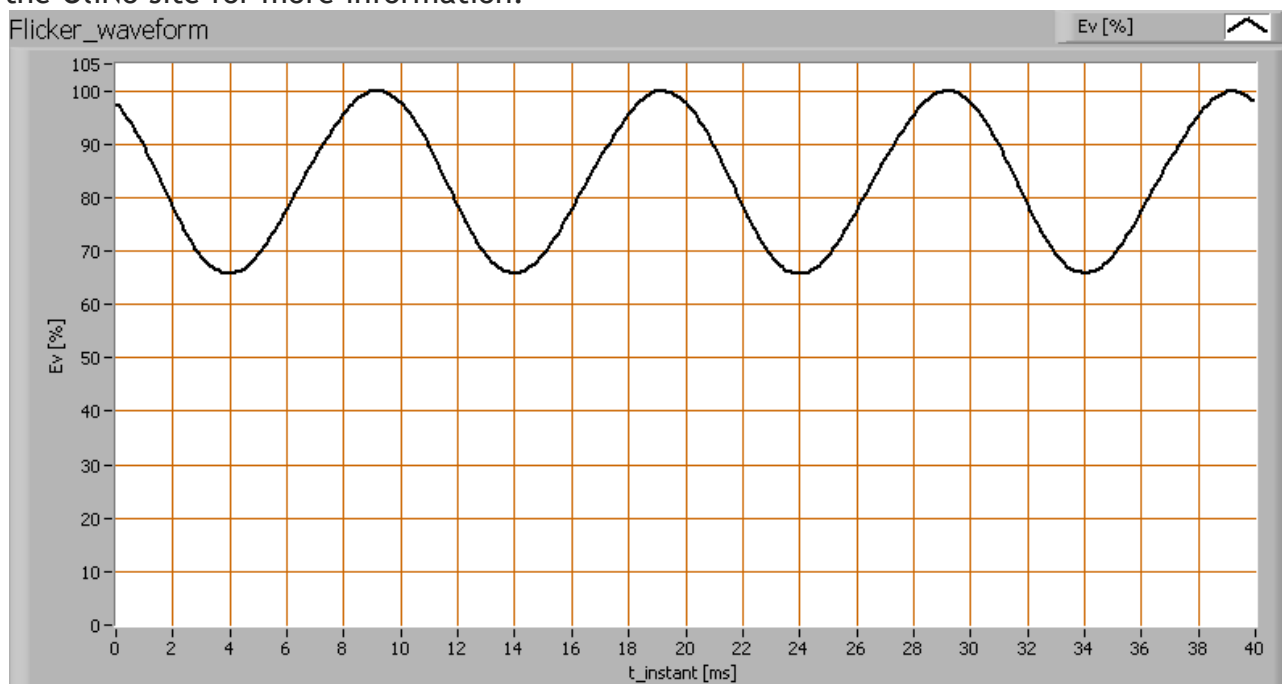
Effect of warming up on different light bulb parameters. At top the 100 % level is put at begin, and at bottom at the end.

Lamp measurement report – 25 Nov 2010

The warm up time is not defined as the illuminance and consumed power vary less than 5 %.

Measure of flickering

An analysis is done on the measure of flickering of the light output by this light bulb. See the OLiNo site for more information.



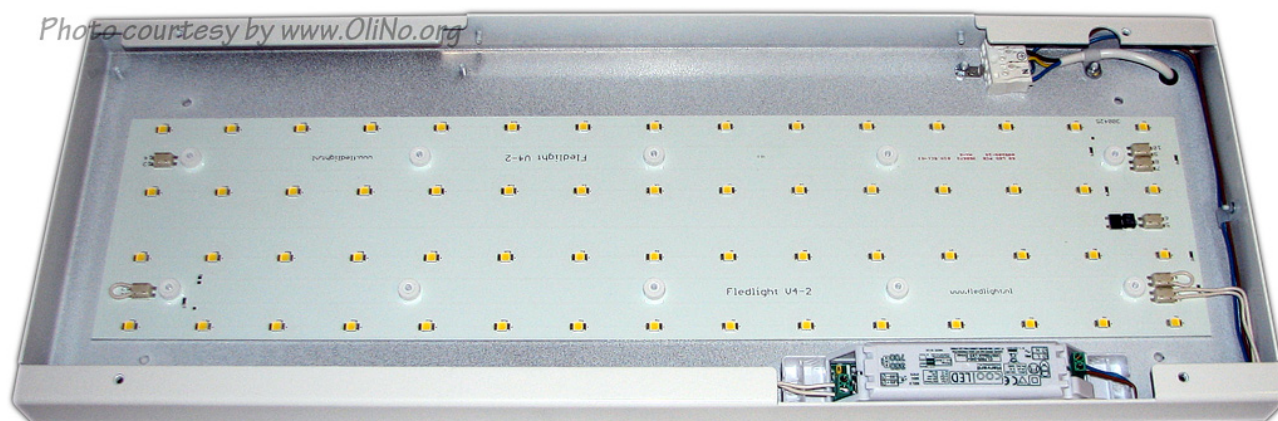
The measure of fast illuminance variation of the light of the light bulb

parameter	value	unit
Flicker frequency	99.9	Hz
Illuminance modulation index	21	%

The illuminance modulation index is computed as: $(\max_Ev - \min_Ev) / (\max_Ev + \min_Ev)$.

Lamp measurement report – 25 Nov 2010

Additional photo



View of the internal printed circuit board in which the leds are mounted

Disclaimer

The information in this OliNo report is created with the utmost care. Despite this, the information could contain inaccuracies. OliNo cannot be held liable in this instance nor can the data in this report be legally binding.

We strive to adhere to all of the conditions of any copyright holder in the publication of any illustration/article or item. In the event that we unintentionally violate said copyright holder's conditions in our articles, we kindly ask to be contacted here at OliNo so that we can resolve any disputes, issues or misunderstandings.

License

It is permitted ONLY to use or publish this report in its entirety and in unaltered form via internet or other digital or written media in any form. To guarantee the reliability and accuracy of the report, it is strictly prohibited to change or alter parts of the report and/or republish it in a modified content.