

Lamp measurement report - 3 Oct 2013

12V led strip 2500K 10.5W.m-1

by

TopLEDshop



Lamp measurement report - 3 Oct 2013

Summary measurement data

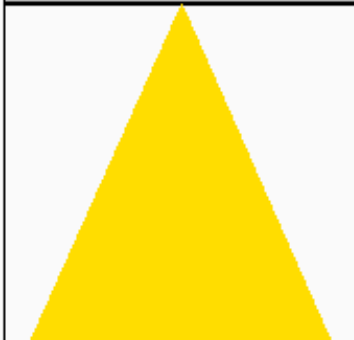
parameter	meas. result	remark
Color temperature	2292 K	deep warm white
Luminous intensity I _v	224.4 Cd	Measured straight underneath the lamp.
Illuminance modulation index	1 %	Measured with a light sensor looking at the lamp (angle not defined). Is a measure for the amount of flickering.
Beam angle	113 deg	112 deg is the beam angle for the C0-C180-plane (perpendicular to the length direction of the lamp) and 113 deg is the beam angle for the C90-C270 plane, which is along the length direction of the lamp.
Power P	10.2 W	Follow the link for more information on electrical properties.
Power Factor	1.00	The tests were done with a DC power supply. This results in no blind power and as a result the power factor is always 1.0 but not relevant to mention.
THD	NaN %	Total Harmonic Distortion, is not present as a DC voltage was used to power the lamp so a DC current resulted which has no THD.
Luminous flux	629 lm	
Luminous efficacy	62 lm/W	Be aware that a DC power supply has been used. The found efficacy with this measurement is excluding the power supply that normally is needed to convert the grid voltage (230 V AC) to the used DC voltage. By excluding the consumption of the power supply the efficacy found here is higher than it would be when the power supply had been included.
EU2013-label classification	A	The energy class, from A++ (more efficient) to E (least efficient). This label is an update of the previous version, and compulsory from Sept 2013.
CRI _{Ra}	85	Color Rendering Index.
Coordinates chromaticity diagram	x=0.5014 en y=0.4228	
Fitting	12V DC	This strip is connected directly to the 12 V DC.
PAR-value	1.6 uMol/s/m ²	The number of photons seen by an average plant when it is lit by the light of this light bulb. Value valid at 1 m distance from light bulb.
PAR-photon efficacy	0.4 uMol/s/W _e	The total emitted number of photons by this light, divided by its consumption in W. It indicates a kind of efficacy in generating photons.

Lamp measurement report - 3 Oct 2013

parameter	meas. result	remark
Photon current	7.5 uMol/s	The total number of photons in the light of this lamp.
S/P ratio	1.0	This factor indicates the amount of times more efficient the light of this light bulb is perceived under scotopic circumstances (low environmental light level).
L x W x H external dimensions	1000 mm x 12 mm x 4 mm	External dimensions of the lamp.
L x W luminous area	1000 mm x 10 mm	Dimensions of the luminous area (used in Eulumdat file). It is the smallest area around the leds.
General remarks		<p>The ambient temperature during the whole set of illuminance measurements was 26.8 - 28.2 deg C.</p> <p>The temperature of the housing gets maximally about 29 degrees hotter than ambient temperature.</p> <p>Warm up effect: During the warmup time the illuminance doesn't vary significantly (< 5 %).</p> <p>During the warmup time the power varies during 14 minutes and increases with 6 %.</p> <p>Voltage dependency: There is a constant dependency of the illuminance when the power voltage varies between 10 - 14 V DC. There is a constant dependency of the consumed power when the power voltage varies between 10 - 14 V DC.</p>
Dimmable	no	Info from manufacturer.
Biologic effect factor	0.193	According to pre-norm DIN V 5031-100:2009-06.
Blue Light Hazard risk group	0	0=exempt, 1=low, 2 = moderate, 3=high risk.
form factor	tube/strip	

Lamp measurement report - 3 Oct 2013

Overview table

m.	Ø 50%		C0-180: 112° C90-270: 113° 	E (lux)	Luminaire Efficacy
	C0-180	C90-270			62 (lumen per Watt)
1	2.98	3.04		224	Half-peak diam C0-180
1.5	4.47	4.56		100	2.98 x diameter(m)
2	5.96	6.08		56	Half-peak diam C90-270
3	8.93	9.13		25	3.04 x diameter(m)
4	11.91	12.17		14	Illuminance
6	17.87	18.25		6	224 / distance² (lux)
8	23.83	24.33		4	Total Output
					629 (lumen)

The overview table is explained on the OliNo website.

Please note that this overview table makes use of calculations, use this data with care as explained on the OliNo site. E (lux) values are not accurate, when within 5 x 1000 mm (maximal luminous size, eventually diagonally measured)= 5000 mm. Within this distance from the lamp (data given in red), the measured lux values will be less than the computed values in this overview as the measurements are then within the near field of the lamp.

Lamp measurement report - 3 Oct 2013

EU 2013 Energy label classification

Since Sept 2013 these labels will be needed, see also this page for the explanation.

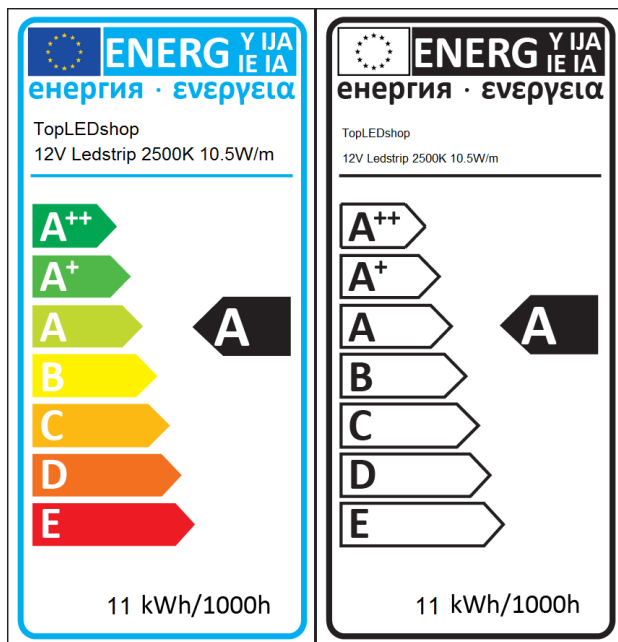
Important for the energy classification are the corrected rated power and the useful luminous flux.

The measured rated power is 10.2 W and might need to be corrected. The correction is dependent from the lamp type and whether or not the lamp control gear is included or not.

The choice for this lamp is the following classification: **Lamps operating on external LED lamp control gear**. As a result the corrected rated power becomes: 11.2 W.

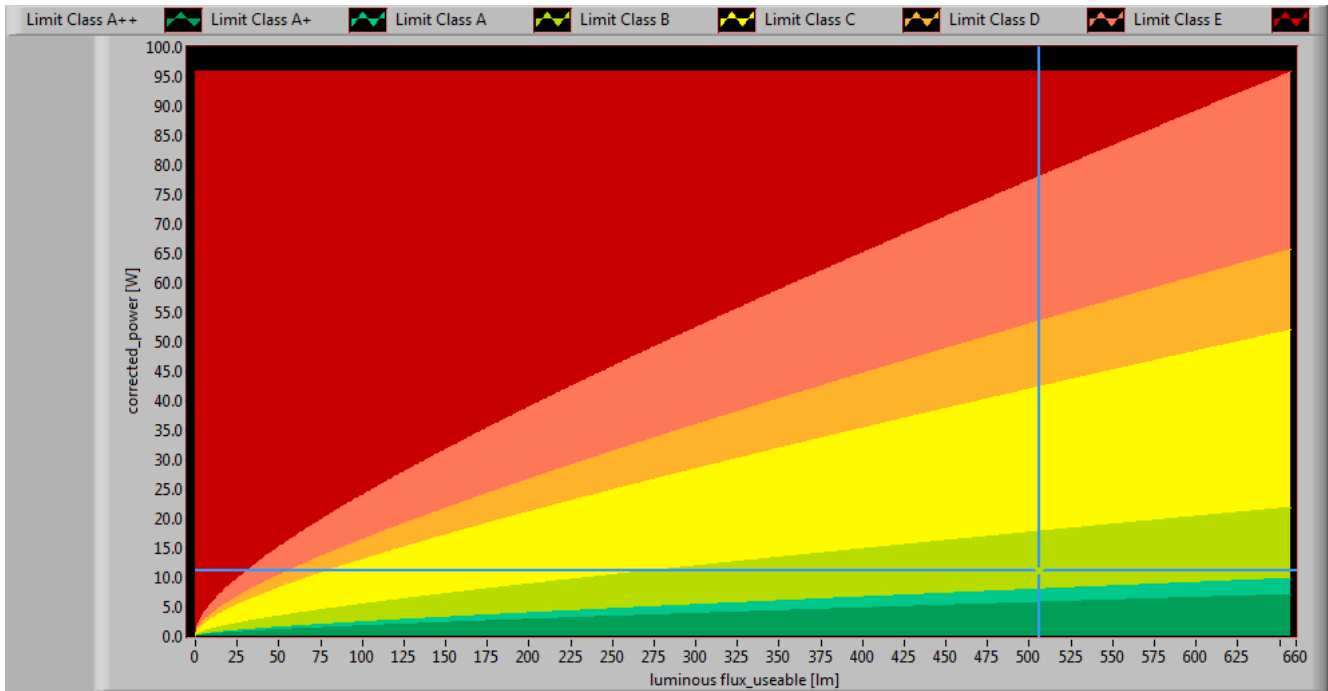
The luminous flux measured is 629 lm. The classification of this lamp needed to determine the useful flux is: **Directional lamps with a beam angle $\geq 90^\circ$ other than filament lamps and carrying a textual or graphical warning on their packaging that they are not suitable for accent lighting**. Then the useful flux becomes 506 lm. Now a reference power can be calculated.

The energy efficiency coefficient is $P_{\text{corr}} / P_{\text{ref}} = 0.25$.



EU energy label for this lamp

Lamp measurement report - 3 Oct 2013

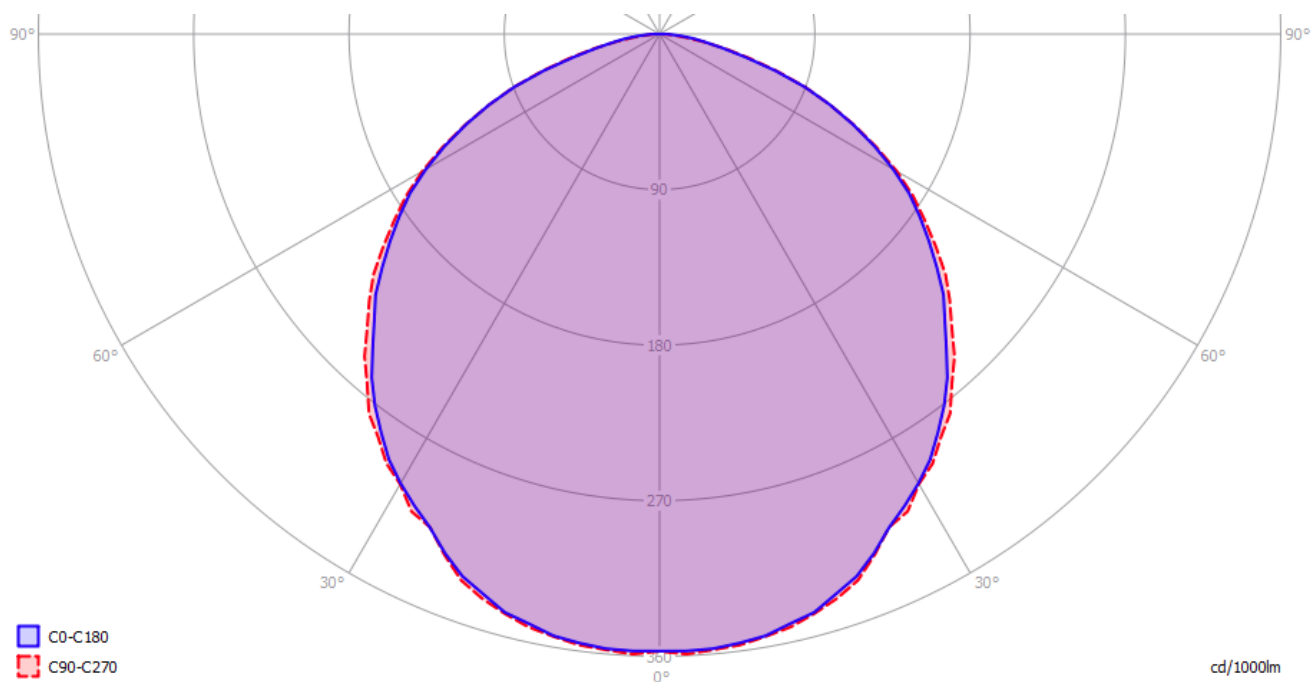


The lamp's performance in the lumen-Watt field, with the energy efficacy fields indicated.

Lamp measurement report - 3 Oct 2013

Eulumdat light diagram

This light diagram below comes from the program Qlumedit, that extracts these diagrams from an Eulumdat file. This light diagram is explained on the OliNo site.



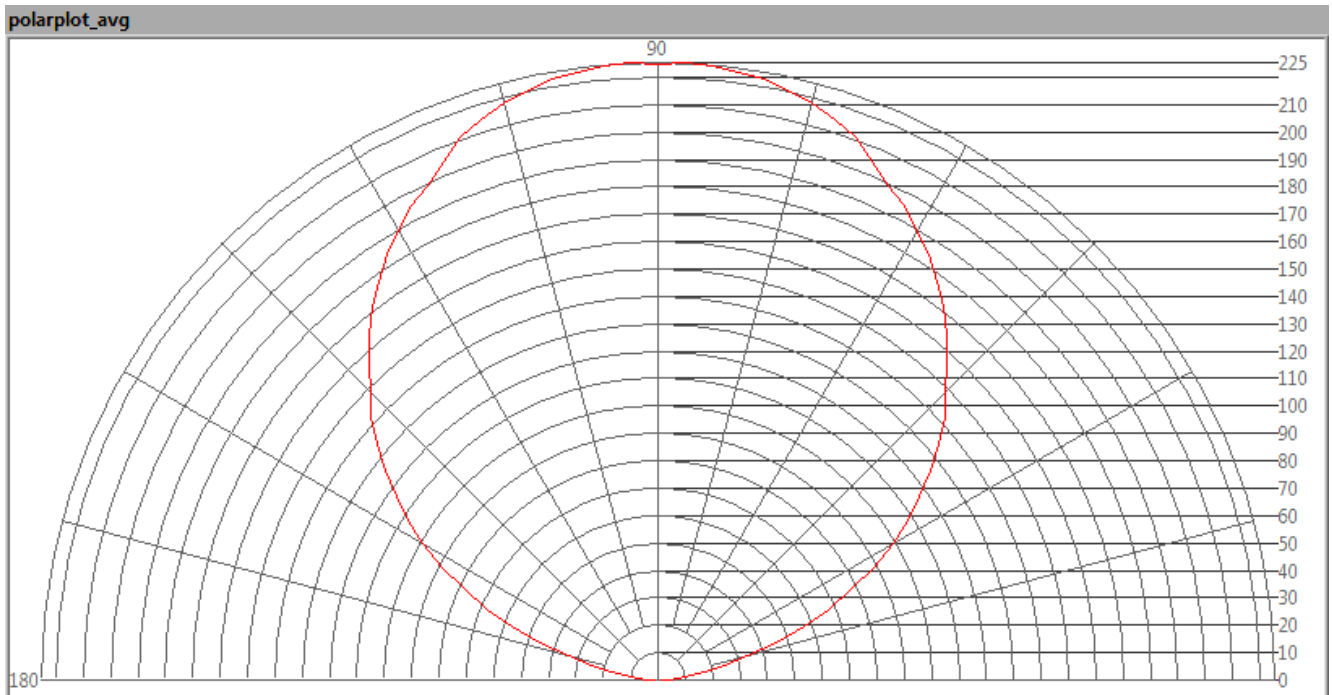
The light diagram giving the radiation pattern.

The light diagram indicates the beam in the C0-C180 plane (perpendicular to the length direction of the lamp) and in the plane perpendicular to that, the C90-C270 plane (along the length direction of the lamp).

Lamp measurement report - 3 Oct 2013

Illuminance E_v at 1 m distance, or luminous intensity I_v

Herewith the plot of the averaged luminous intensity I_v as a function of the inclination angle with the light bulb.

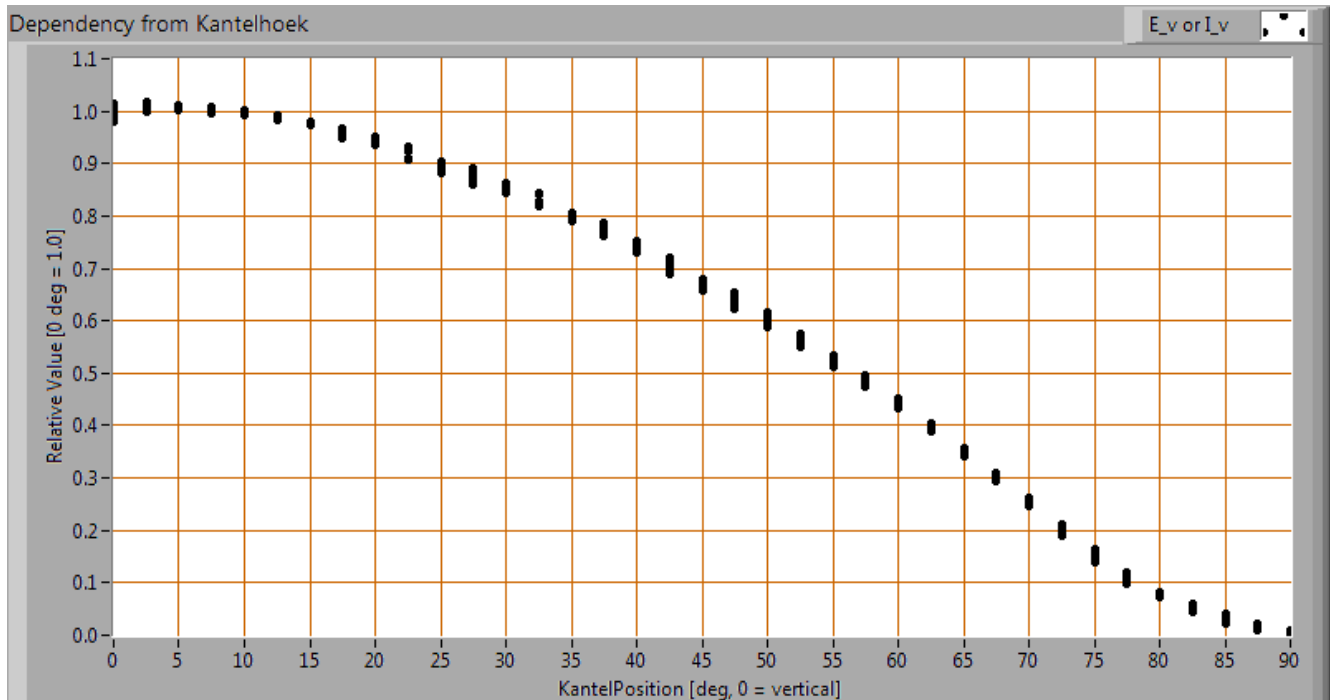


The radiation pattern of the light bulb.

This radiation pattern is the average of the light output of the light diagram given earlier. Also, in this graph the luminous intensity is given in Cd.

These averaged values are used (later) to compute the lumen output.

Lamp measurement report - 3 Oct 2013



Intensity data of every measured turn angle at each inclination angle.

This plot shows per inclination angle the intensity measurement results for each turn angle at that inclination angle. There normally are differences in illuminance values for different turn angles. However for further calculations the averaged values will be used.

When using the average values per inclination angle, the beam angle can be computed, being 112 deg for the C0-C180 plane and 113 deg for the C90-C270 plane.

Luminous flux

With the averaged illuminance data at 1 m distance, taken from the graph showing the averaged radiation pattern, it is possible to compute the luminous flux.

The result of this computation for this light spot is a luminous flux of 629 lm.

Luminous efficacy

The luminous flux being 629 lm, and the consumed power of the lamp being 10.2 Watt, results in a luminous efficacy of 62 lm/Watt.

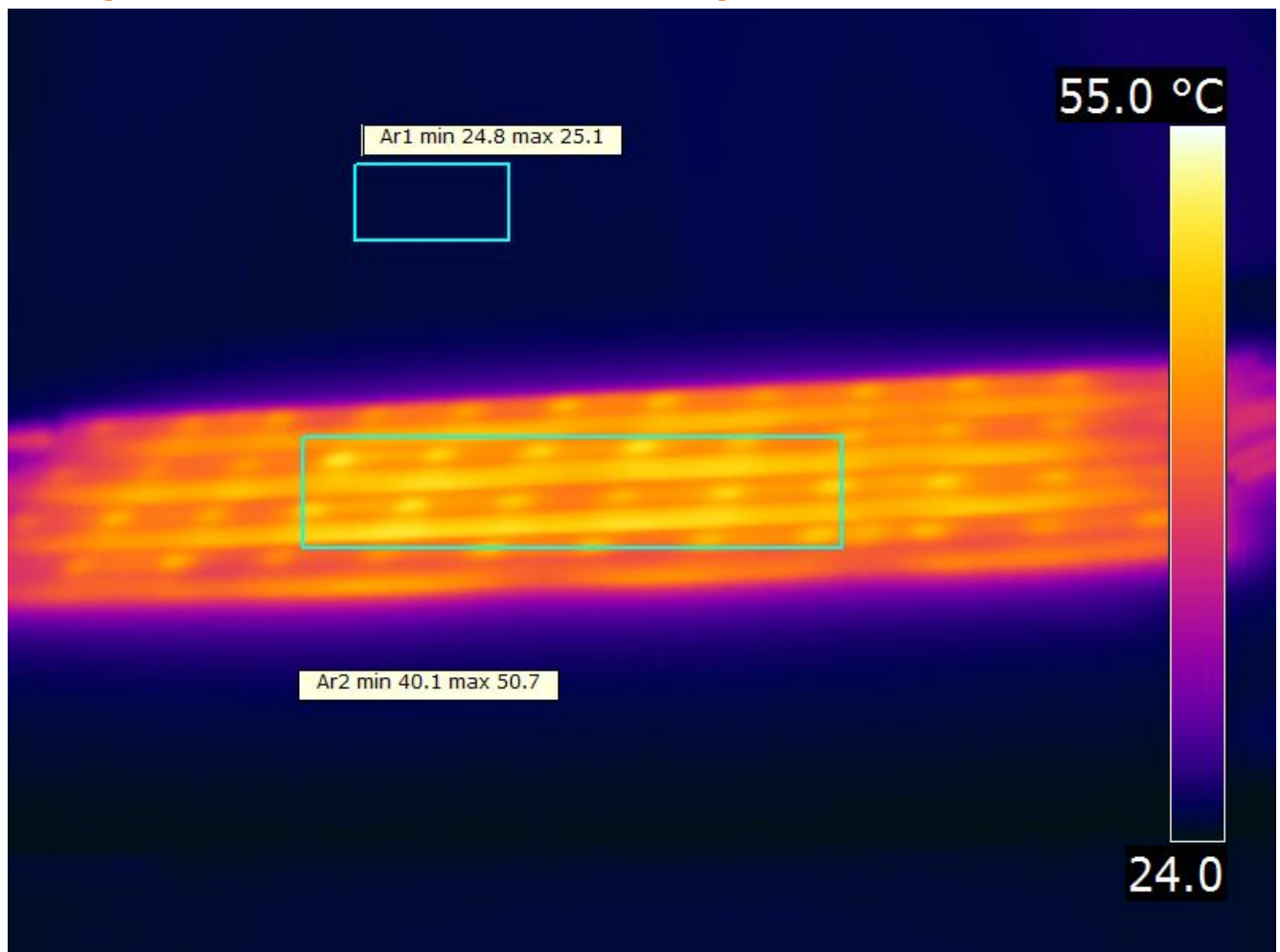
Lamp measurement report - 3 Oct 2013

Electrical properties

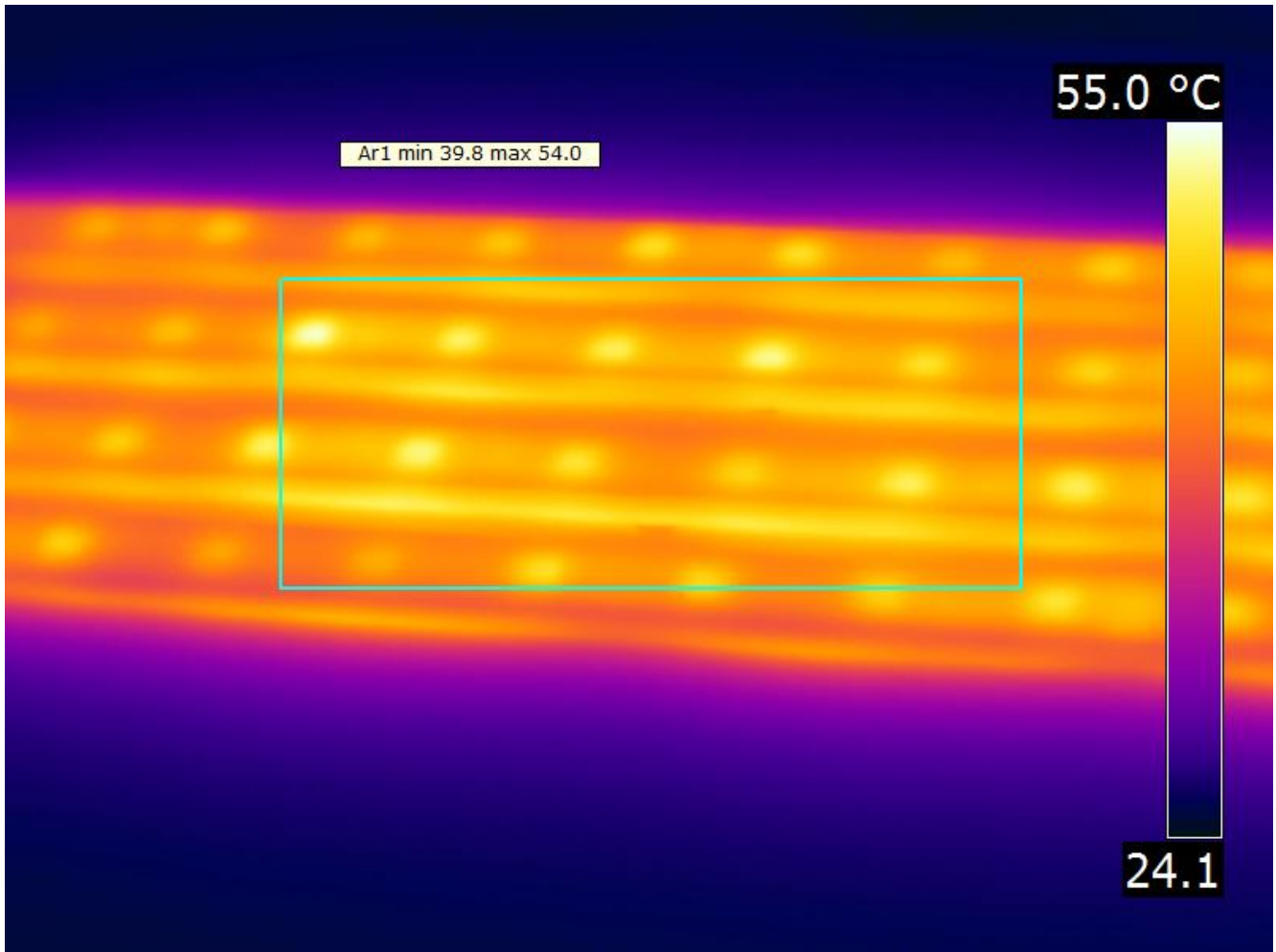
The power factor is 1.00. The tests were done with a DC power supply. This results in no blind power and as a result the power factor is always 1.0 but not relevant to mention.

Lamp voltage	11.94 V
Lamp current	0.855 A
Power P	10.2 W
Apparent power S	10.2 VA
Power factor	1.00

Temperature measurements lamp



Lamp measurement report - 3 Oct 2013

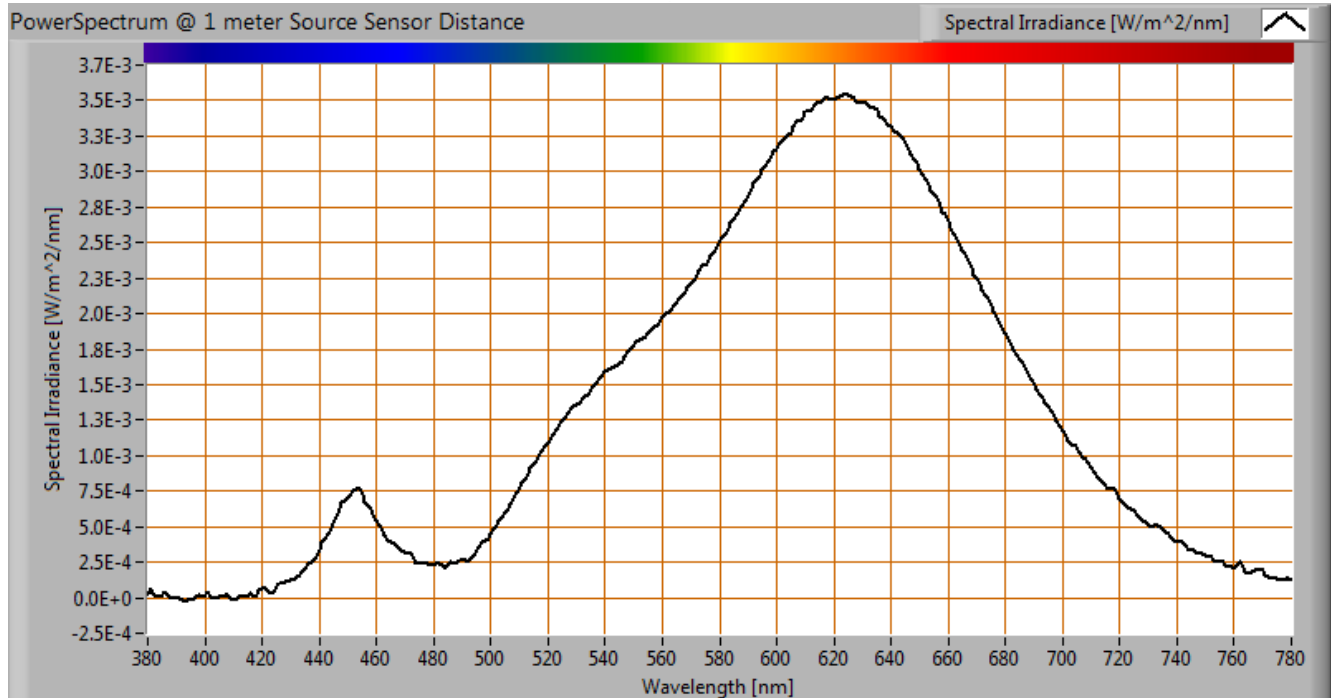


Temperature image(s).

status lamp	> 2 hours on
ambient temperature	25 deg C
reflected background temperature	25 deg C
camera	Flir T335
emissivity	0.95
measurement distance	1 m
IFOV_geometric	0.136 mm per 0.1 m distance
NETD (thermal sensitivity)	50 mK

Lamp measurement report - 3 Oct 2013

Color temperature and Spectral power distribution

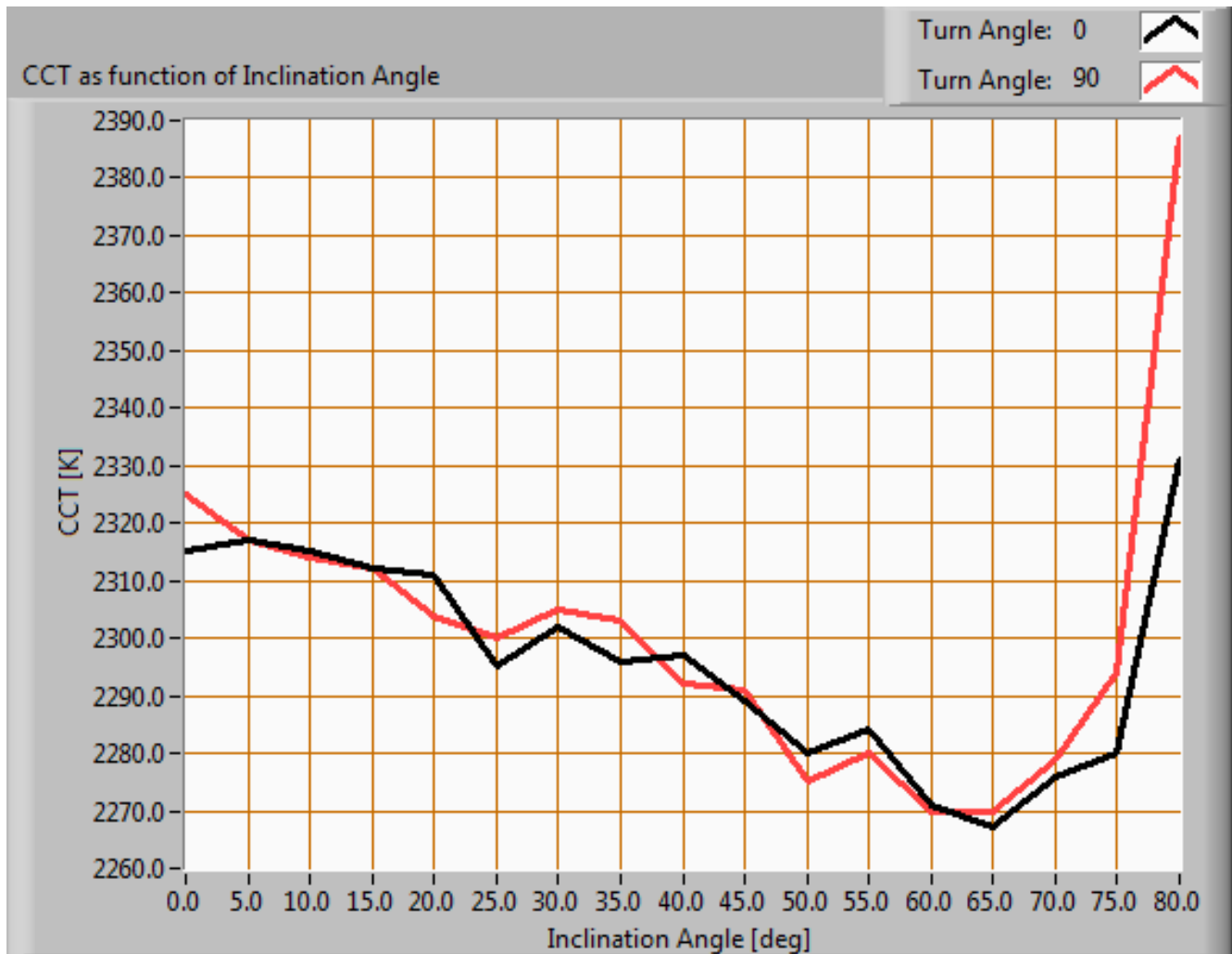


The spectral power distribution of this light bulb, energies on y-axis valid at 1 m distance.

The measured color temperature is 2292 K which is deep warm white.

This color temperature is measured straight underneath the light bulb. Below a graph showing the color temperature for different inclination angles.

Lamp measurement report - 3 Oct 2013



Color temperature as a function of inclination angle.

The color temperature is given for inclination angles up to 80 deg. Beyond that value the illuminance is so low (< 5 lux) that it has not been used for color determination of the light.

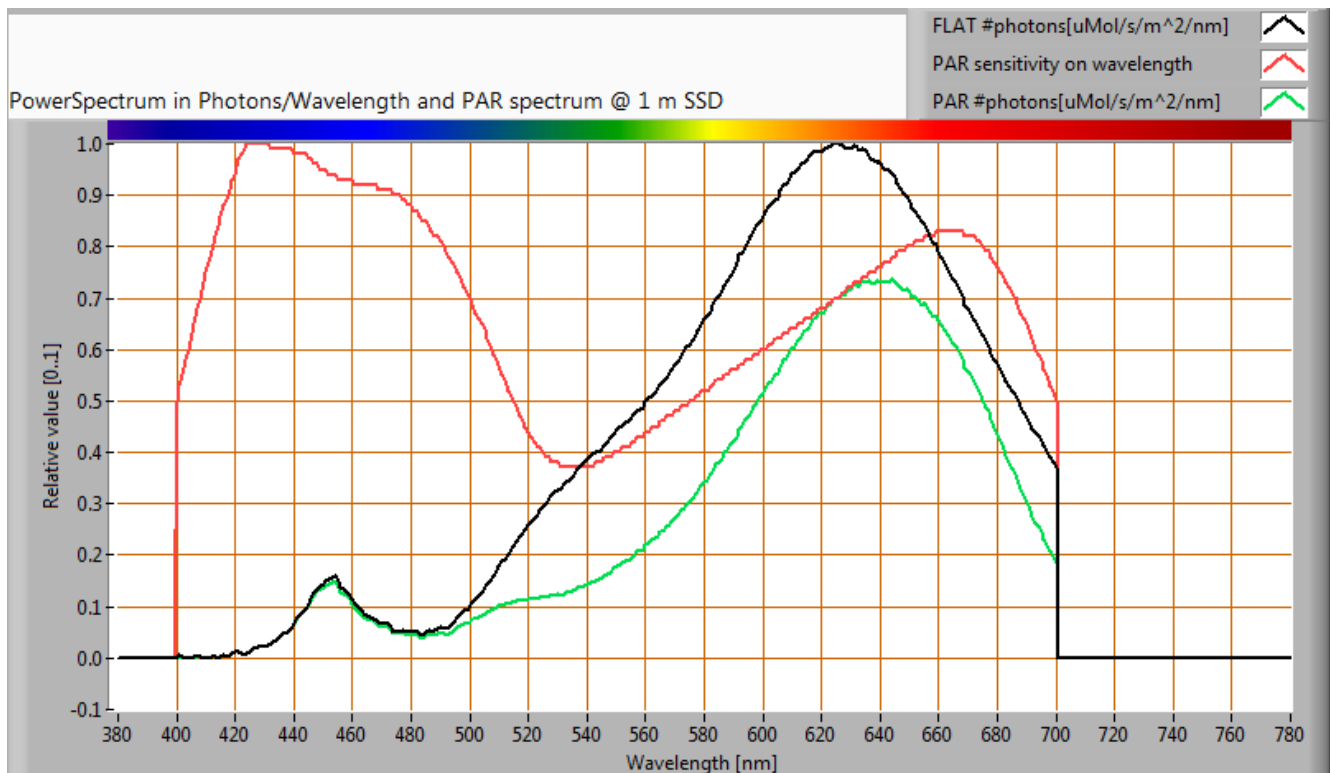
For the C0-C180 plane: the beam angle of 112 deg is equivalent to 56.1 deg inclination angle, which is the area where most of the light falls within. The maximum variation of color temperature in this inclination area is about 2 %.

For the C90-C270 plane: the beam angle of 113 deg is equivalent to 56.7 deg inclination angle, which is the area where most of the light falls within. The maximum variation of color temperature in this inclination area is about 2 %.

Lamp measurement report - 3 Oct 2013

PAR value and PAR spectrum

To make a statement how well the light of this light bulb is for growing plants, the PAR-area needs to be determined. See the explanation about PAR on the OLiNo website how this all is determined and the explanation of the graph.



The photon spectrum, then the sensitivity curve and as result the final PAR spectrum of the light of this light bulb

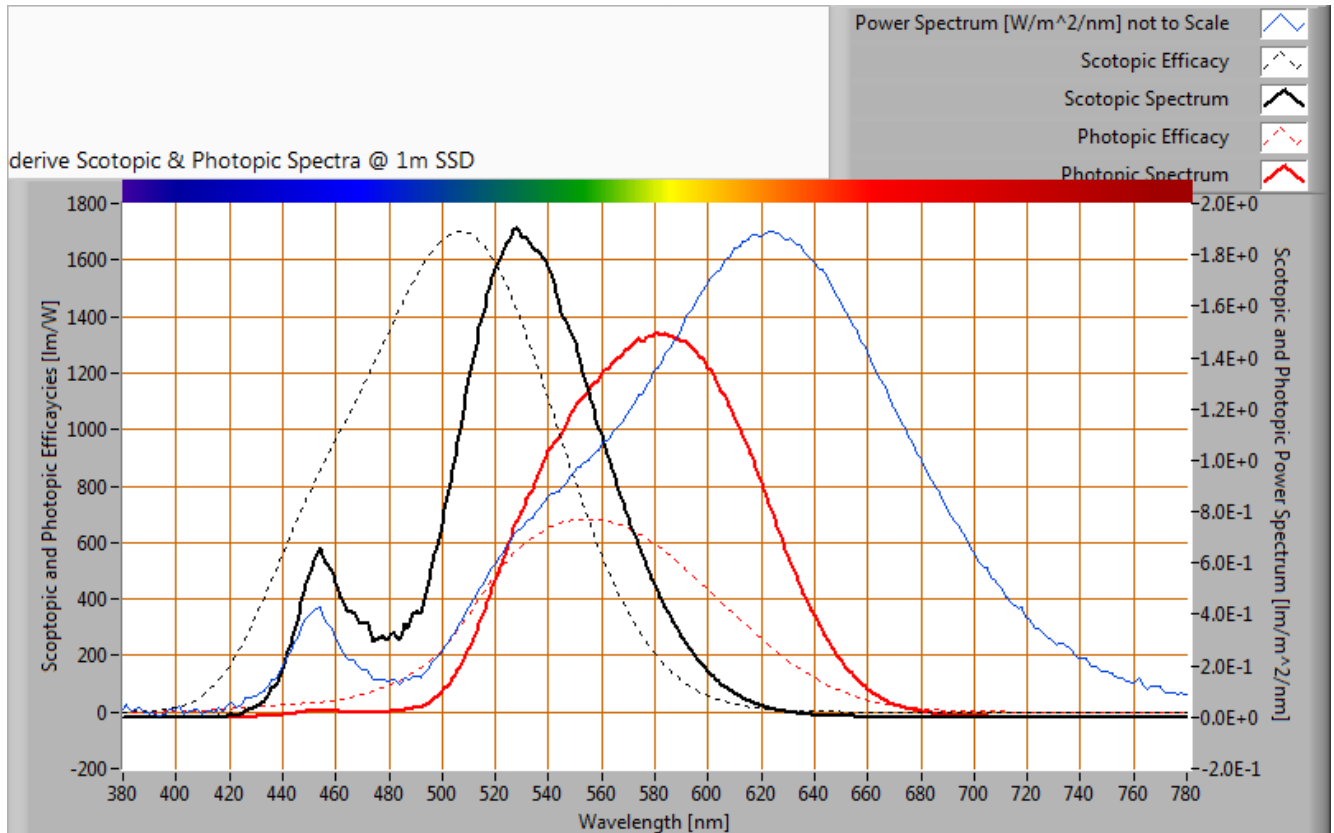
parameter	value	unit
PAR number	1.6	uMol/s/m ²
PAR photon current	4.4	uMol/s
PAR photon efficacy	0.4	uMol/s/W

The PAR efficiency is 65 % (valid for the PAR wave length range of 400 - 700 nm). This is the maximum percentage of the total of photons in the light that is effectively used by the average plant (since the plant might not take 100 % of the photons at the frequency where its relative sensitivity is 100 %).

Lamp measurement report - 3 Oct 2013

S/P ratio

The S/P ratio and measurement is explained on the OliNo website. Here the results are given.



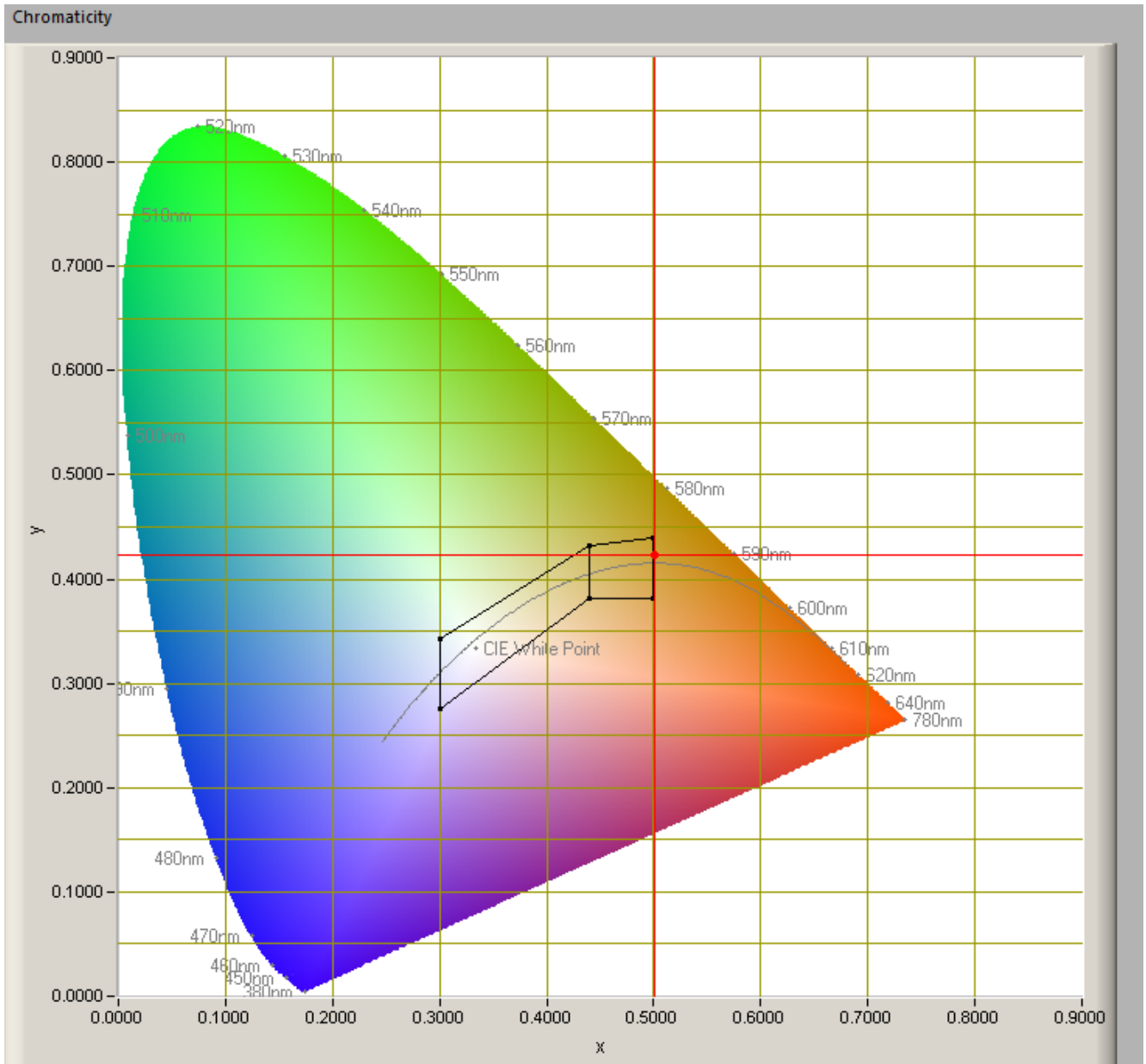
The power spectrum, sensitivity curves and resulting scotopic and photopic spectra (spectra energy content defined at 1 m distance).

The S/P ratio of the light coming from this lamp is 1.0.

More info on S/P ratio can be found on the OliNo website.

Lamp measurement report - 3 Oct 2013

Chromaticity diagram



The chromaticity space and the position of the lamp's color coordinates in it.

The point of the light in this diagram is on the border of the area indicated with class B. This area indicates an area for signal lamps, see also the article on signal lamps and color areas on the OLiNo website.

The color coordinates are $x=0.5014$ and $y=0.4228$.

Lamp measurement report - 3 Oct 2013

Color Rendering Index (CRI) or also Ra

Herewith the image showing the CRI as well as how well different colors are represented (rendered). The higher the number, the better the resemblance with the color when a black body radiator would have been used (the sun, or an incandescent lamp). Practical information and also some critics about the CRI can be found on the OLiNo website.

Each color has an index R_x , and the first 8 indexes ($R_1 \dots R_8$) are averaged to compute the R_a which is equivalent to the CRI.

☐ manual

Reference Illuminant: Planckian radiator CCT: 2292 K

Chromaticity Difference DC= 2.4E-3

R1= 84		R8= 69.6	
R2= 89.8		R9= 33.9	
R3= 93.8		R10= 74.9	
R4= 84.1		R11= 82	
R5= 81.8		R12= 65.7	
R6= 86.4		R13= 84.9	
R7= 88.5		R14= 95.2	

Ra
(mean value of R1 - R8)
84.8

CRI of the light of this lightbulb.

This value of 85 indicates how well the light of this lamp can render well a set of reference colors, this in comparison with the light of a reference source (for color temperatures $< 5000\text{K}$ a black radiator is used as reference and for color temperatures $> 5000\text{K}$ the sun or the light outside during the day).

The value of 85 is bigger than the value of 80 that is considered as a minimum for working areas in general.

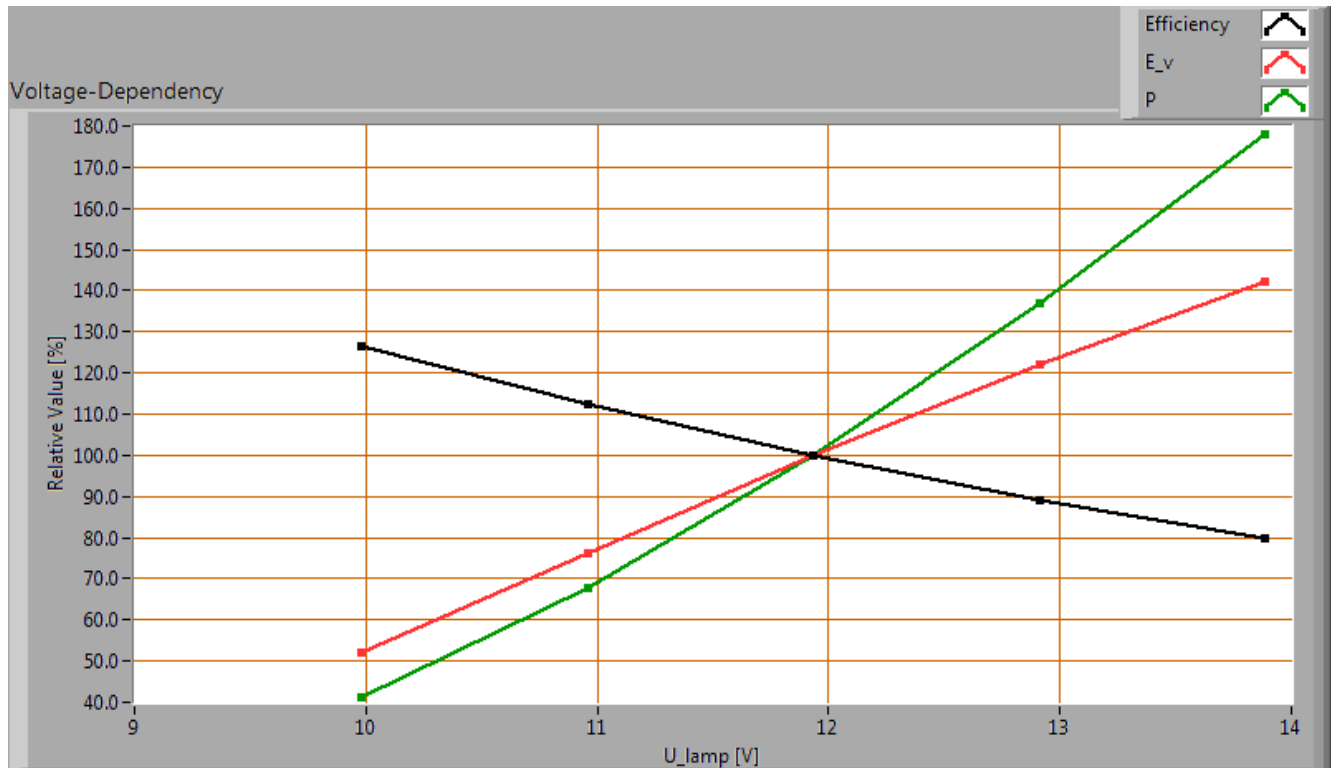
Note: the chromaticity difference is 0.0024 and indicates the distance to the Planckian Locus. There is a value mentioned of max 5.4E-3 in section 5.3 of CIE 13.3-1995 however not further explanation of it.

An other reference with signal lights as a reference is given in the chromaticity diagram.

Lamp measurement report - 3 Oct 2013

Voltage dependency

The dependency of a number of lamp parameters on the lamp voltage is determined. For this, the lamp voltage has been varied and its effect on the following light bulb parameters measured: illuminance E_v [lx], the lamp power P [W] and the luminous efficacy [lm/W] (this latter is estimated here by dividing the found E_v value by P).



Lamp voltage dependencies of certain light bulb parameters

There is a constant dependency of the illuminance when the power voltage varies between 10 - 14 V DC.

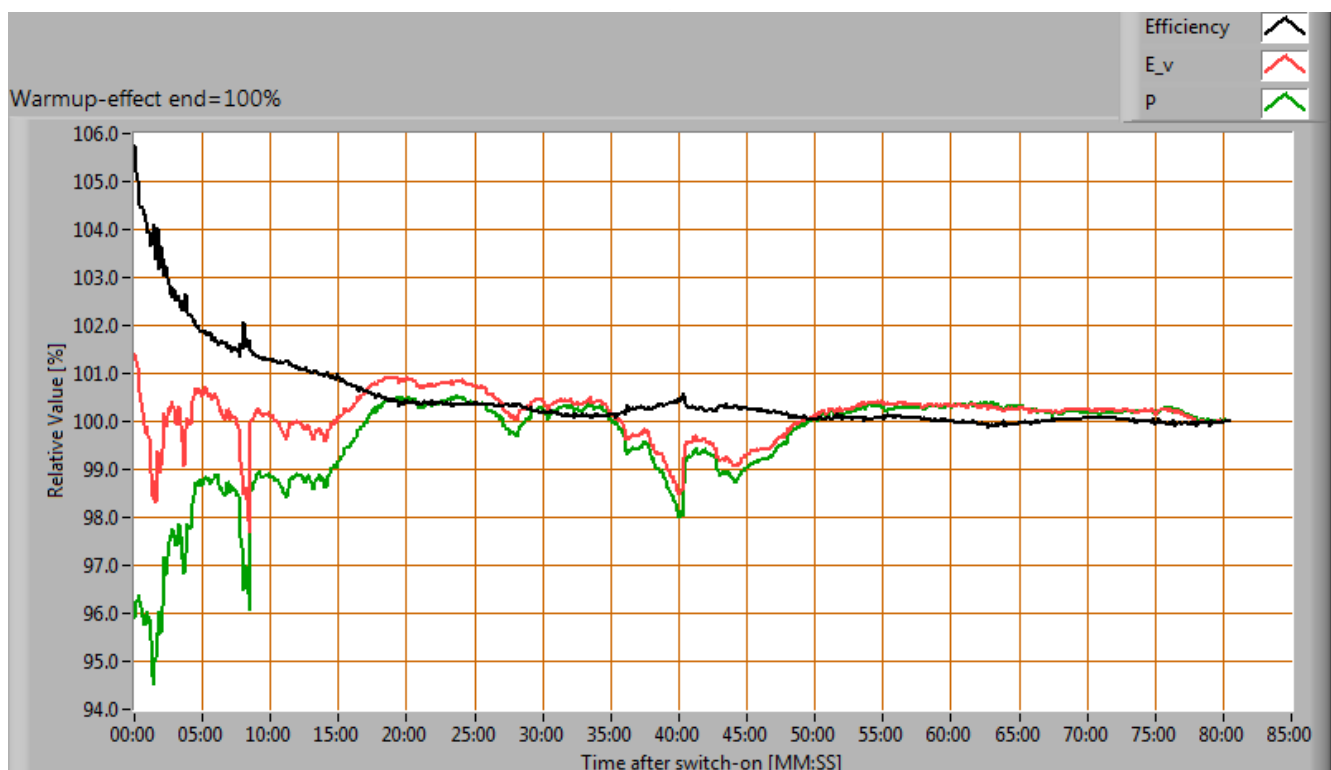
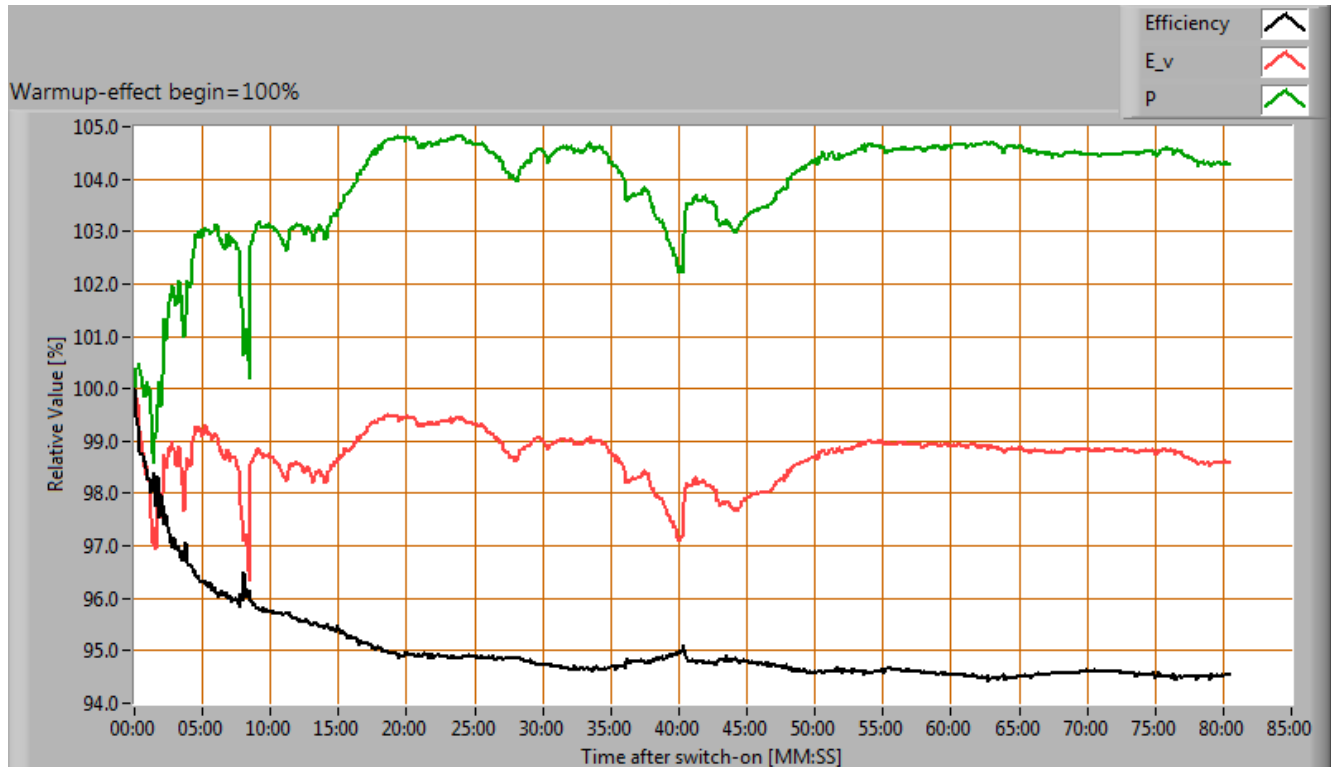
There is a constant dependency of the consumed power when the power voltage varies between 10 - 14 V DC.

When the voltage varies abruptly with + or - 0.25 V DC then this results in a variation of the illuminance of maximally 5.9 %. This difference in illuminance is not visible (when it occurs abruptly).

Lamp measurement report - 3 Oct 2013

Warm up effects

After switch on of a cold lamp, the effect of heating up of the lamp is measured on illuminance E_v [lx], the lamp power P [W] and the luminous efficacy [lm/W].



Effect of warming up on different light bulb parameters. In the first graph the 100 % level is put at begin, and in the last graph the 100 % level is put at the end.

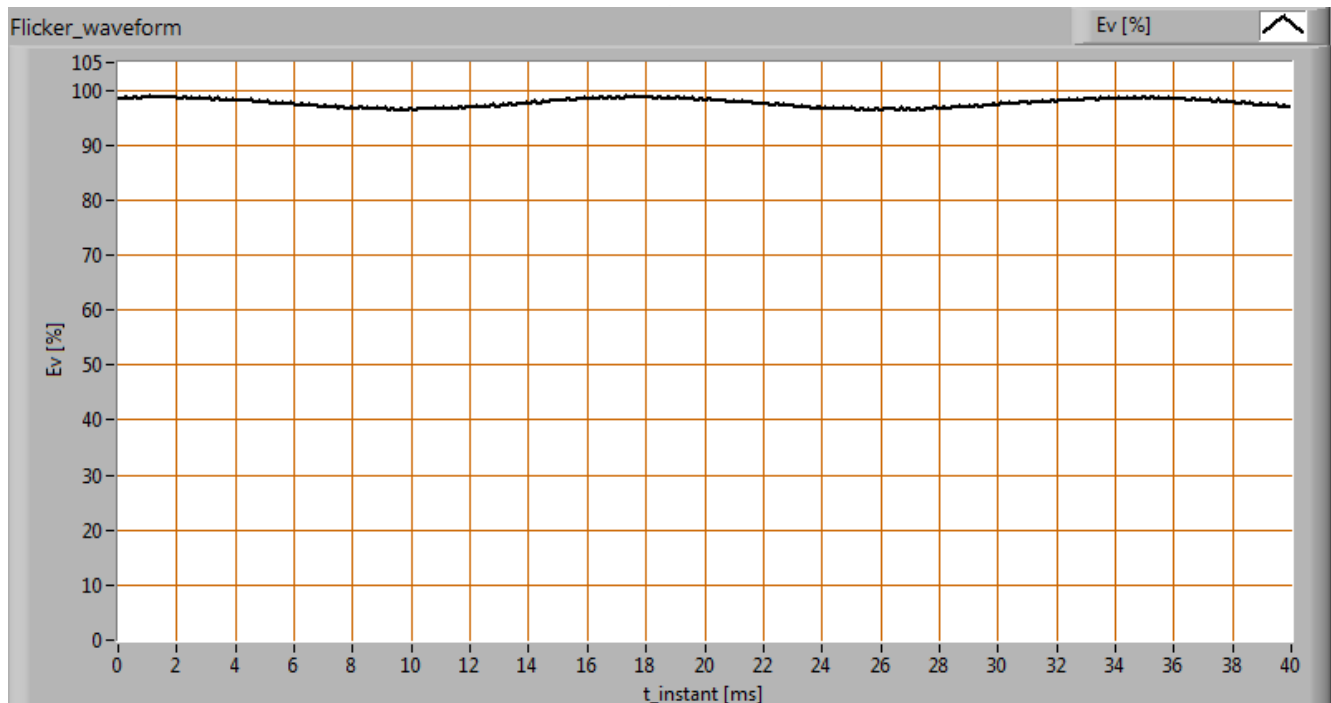
Lamp measurement report - 3 Oct 2013

During the warmup time the illuminance doesn't vary significantly (< 5 %).

During the warmup time the power varies during 14 minutes and increases with 6 %.

Measure of flickering

An analysis is done on the measure of flickering of the light output by this light bulb. See the article on flickering on OliNo site for more information.



The measure of fast illuminance variation of the light of the light bulb

parameter	value	unit
Flicker frequency	60.4	Hz
Illuminance modulation index	1	%

The illuminance modulation index is computed as: $(\max_Ev - \min_Ev) / (\max_Ev + \min_Ev)$.



Lamp measurement report - 3 Oct 2013

Biologic effect

The biologic effect shows the level of impact the light of this lamp can have on the day-night rhythm of human beings (as well as the suppression of melatonin production). See also the explanatory article on biologic effect on OliNo.

The important parameters (according to prnorm DIN V 5031-100:2009-06):

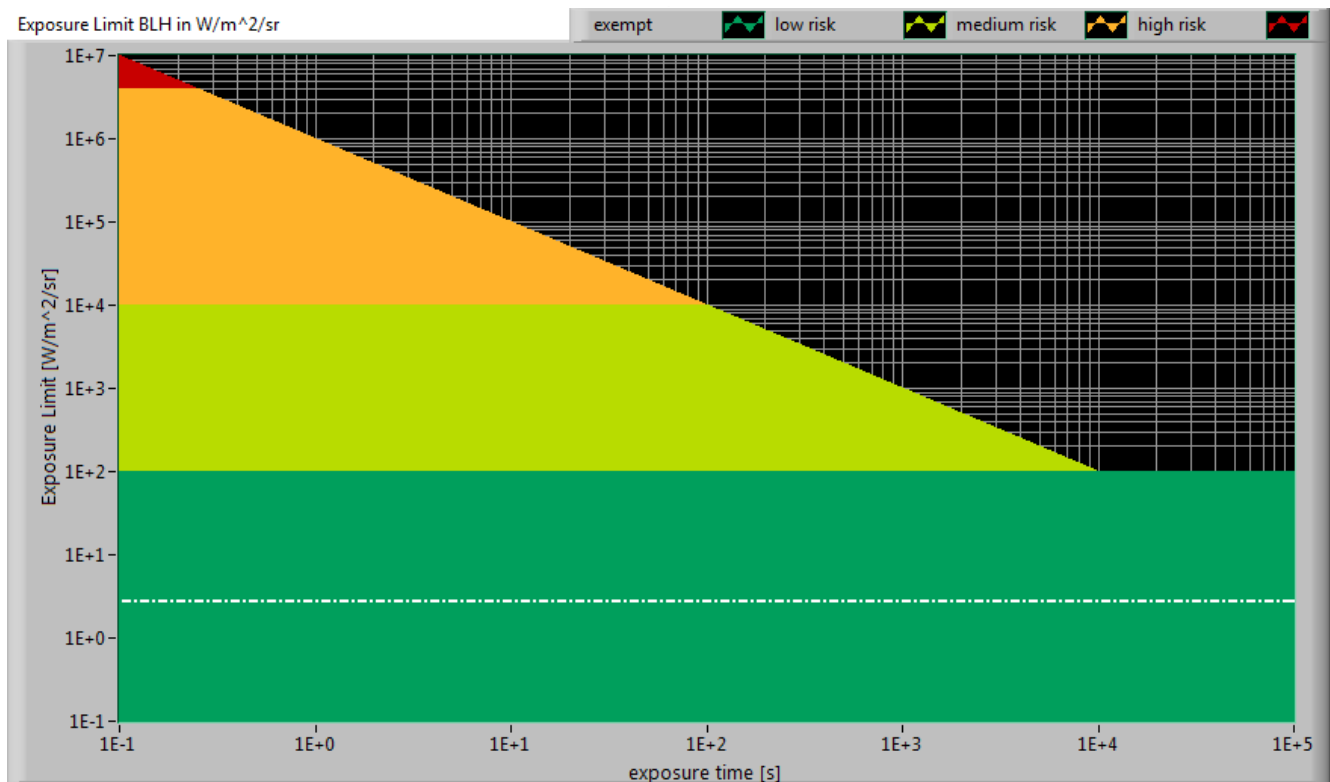
biologic effect factor	0.193
k_biol trans (25 years)	1.000
k_biol trans (50 years)	0.792
k_biol trans (75 years)	0.558
k_pupil(25 years)	1.000
k_pupil(50 years)	0.740
k_pupil(75 years)	0.519

Lamp measurement report - 3 Oct 2013

Blue Light Hazard

The amount of blue light and the harm it can cause on the retina has been determined. Herewith the results.

See for more info the explanation about blue light hazard on the OliNo site.



The level of blue light of this lamp related to the exposure limit and the different classification areas.

L_lum0 [mm]	10	Dimension of brightest part of lamp in C0-C180 direction.
L_lum90 [mm]	480	Dimension of brightest part of lamp in C90-C270 direction.
SSD_500lx [mm]	670	Calculated distance where $E_v = 500$ lux. This computation is valid when it is in the far field of the lamp. Note: if this value < 200 mm then the distance of 200 mm is taken as proposed in the norm IEC 62471:2006.
Start of far field [mm]	2401	Minimum distance at which the lamp can be seen as a point source. In this area the E_v is linearly dependent from $(1/distance)^2$.
300-350 nm values stuffed with 0s	no	In the event OliNo has measured with a SpB1211 spectrometer without UV option then the irradiance data of 300-349 nm is missing. For lamps where there is already no energy content near 350 nm, the values 300-349 can also be set at zero then.
alpha_C0-C180 [rad]	0.015	(Apparent) source angle in C0-C180 direction.

Lamp measurement report - 3 Oct 2013

alpha_C90-C270 [rad]	0.716	(Apparent) source angle in C90-C270 direction.
alpha_AVG [rad]	0.057	Average (apparent) source angle. If average ≥ 0.011 rad then the exposure limit is computed with radiance L_b . Otherwise with irradiance E_b .
Exposure value [$W/m^2/sr$]	$<2.69E+0$	Blue Light Hazard value for this lamp, measured straight underneath the lamp. Computation is referenced to L_b . Because the distance at 500 lux is in the near field, then this exposure value is too pessimistic and should be lower.
Blue Light Hazard risk group	0	0=exempt, 1=low, 2 = moderate, 3=high risk.

Disclaimer

The information in this OliNo report is created with the utmost care. Despite this, the information could contain inaccuracies. OliNo cannot be held liable in this instance nor can the data in this report be legally binding.

We strive to adhere to all of the conditions of any copyright holder in the publication of any illustration/article or item. In the event that we unintentionally violate said copyright holder's conditions in our articles, we kindly ask to be contacted here at OliNo so that we can resolve any disputes, issues or misunderstandings.

License

It is permitted ONLY to use or publish this report in its entirety and in unaltered form via internet or other digital or written media in any form. To guarantee the reliability and accuracy of the report, it is strictly prohibited to change or alter parts of the report and/or republish it in a modified content.