

**Lamp measurement report - 18 April 2016**

**Medium End High Eff**

by

**Reliable-LED**



## Lamp measurement report - 18 April 2016

### Summary measurement data dated 2016-04-06

parameter	meas. result	remark
Color temperature	4141 K	neutral white
Luminous intensity I <sub>v</sub>	1353.0 Cd	Measured straight underneath the lamp.
Illuminance modulation index	1 %	Measured with a light sensor looking at the lamp (angle not defined). Is a measure for the amount of flickering.
Beam angle	118 deg	118 deg is the beam angle for the C0-C180-plane (perpendicular to the length direction of the lamp) and 114 deg is the beam angle for the C90-C270 plane, which is along the length direction of the lamp.
Power P	28.3 W	The net power consumed.
Power Factor	0.98	An electrical load with this power factor means that for every 1 kWh net energy consumed, there has been 0.22 kVAhr for reactive energy.
THD	6 %	Total Harmonic Distortion.
Max inrush current	1.197 A	This current has been found at a voltage start angle of 90 degrees.
Luminous flux	3936 lm	Measured with photogoniometer, calculation done as described in LM79-08.
Luminous efficacy	139 lm/W	
EU2013-label classification	A++	The energy class, from A++ (more efficient) to E (least efficient). This label is an update of the previous version, and compulsory from Sept 2013.
CRI_Ra	83	Color Rendering Index.
Qa_CQS	82.0	QCS (v9.0.3) is an improved indicator (over CRI) of how well colors are rendered.
Qg_CQS	0.92	Gamut Area Ratio.
Coordinates chromaticity diagram	x=0.3778 en y=0.3756	
Fitting	FL-tube	From one side to the grid voltage.
PAR-value	11.8 μMol/s/m <sup>2</sup>	The number of photons seen by an average plant when it is lit by the light of this light bulb. Value valid at 1 m distance from light bulb.
PAR-photon efficacy	1.2 μMol/s/W <sub>e</sub>	The total emitted number of photons by this light, divided by its consumption in W. It indicates a kind of efficacy in generating photons.
Photon current	55.4 μMol/s	The total number of photons in the light of this lamp.

## Lamp measurement report - 18 April 2016

parameter	meas. result	remark
S/P ratio	1.7	This factor indicates the amount of times more efficient the light of this light bulb is perceived under scotopic circumstances (low environmental light level).
L x W x H external dimensions	1500 mm x 25 mm x 25 mm	External dimensions of the lamp.
L x W luminous area	1454 mm x 16 mm	Dimensions of the luminous area (used in Eulumdat file). It is the surface of the white PCB on which the LEDs are.
General remarks		<p>The ambient temperature during the whole set of illuminance measurements was 26.1 - 27.2 deg C. The temperature of the lamp gets maximally about 26.3 degrees hotter than ambient temperature. Warm up effect: During the warmup time the illuminance varies during 31 minutes and decreases with 14 %. During the warmup time the power doesn't vary significantly (&lt; 5 %).</p> <p>The variation in efficacy (calculated as indication by simply dividing the illuminance by the power) during the warming up is -12 %. A very high negative value indicates a significant decrease for instance due to heating up of the lamp (decrease of lifetime).</p> <p>Voltage dependency: There is no (significant) dependency of the illuminance when the power voltage varies between 200 - 250 V AC.</p> <p>There is no (significant) dependency of the consumed power when the power voltage varies between 200 - 250 V AC.</p> <p>At the end of the article an additional photo.</p>
Eff-variation	-12 %	This is the variation in efficacy (calculated as indication by simply dividing the illuminance by the power) during the warming up. A very high negative value indicates a significant decrease for instance due to heating up of the lamp (decrease of lifetime).
Dimmable	no	Info from manufacturer.
Melanopic effect factor	0.584	According to norm DIN SPEC 5031-100:2015-08.
Blue Light Hazard risk group	0	0=exempt, 1=low, 2 = moderate, 3=high risk.
form factor	tube	
article number		



## Lamp measurement report - 18 April 2016

### Overview table

m.	Ø 50%		C0-180: 118° C90-270: 114°	E (lux)	Luminaire Efficacy
	C0-180	C90-270			139 (lumen per Watt)
7	23.2	21.4		28	Half-peak diam C0-180
10.5	34.8	32.2		12	23.23 x diameter(m)
14	46.5	42.9		7	Half-peak diam C90-270
17.5	58.1	53.6		4	21.44 x diameter(m)
21	69.7	64.3		3	Illuminance
24.5	81.3	75		2	1353 / distance <sup>2</sup> (lux)
28	92.9	85.8		2	Total Output
					3936 (lumen)

Please note that this overview table makes use of calculations, use this data with care as explained on the OliNo site.

## Lamp measurement report - 18 April 2016

### EU 2013 Energy label classification

Since Sept 2013 these labels will be needed.

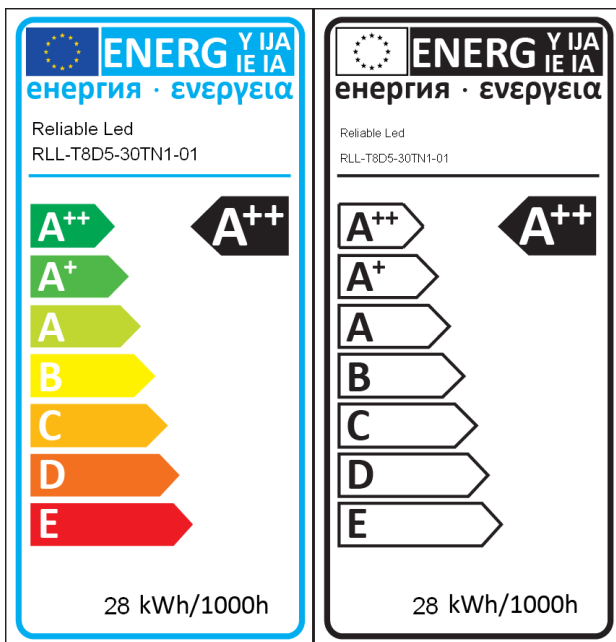
Important for the energy classification are the corrected rated power and the useful luminous flux.

The measured rated power is 28.3 W and might need to be corrected. The correction is dependent from the lamp type and whether or not the lamp control gear is included or not.

The choice for this lamp is the following classification: **Lamps with own control gear (external or internal)**. As a result the corrected rated power becomes: 28.3 W.

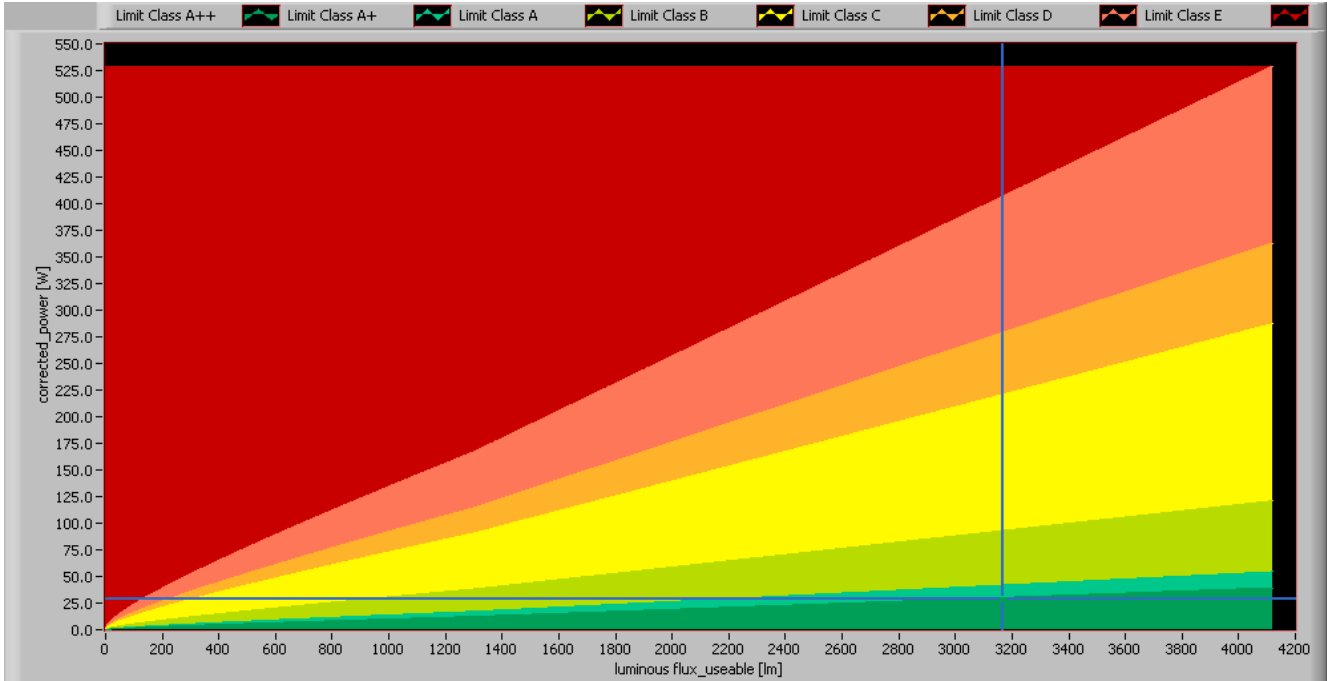
The luminous flux measured is 3936 lm. The classification of this lamp needed to determine the useful flux is: **Directional lamps with a beam angle  $\geq 90^\circ$  other than filament lamps and carrying a textual or graphical warning on their packaging that they are not suitable for accent lighting**. Then the useful flux becomes 3169 lm. Now a reference power can be calculated.

The energy efficiency coefficient is  $P_{corr} / P_{ref} = 0.12$ .



EU energy label for this lamp

### Lamp measurement report - 18 April 2016

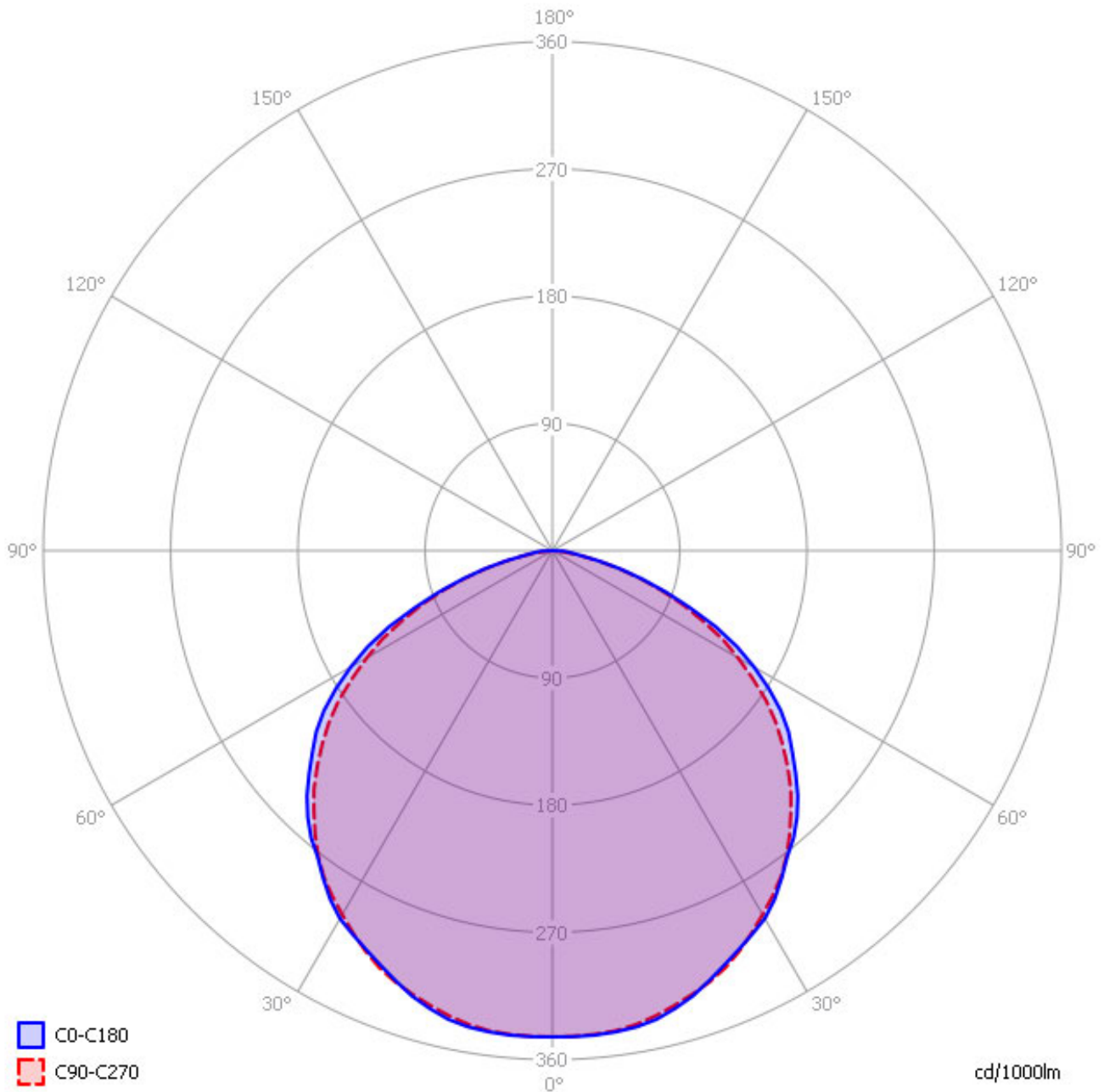


The lamp's performance in the lumen-Watt field, with the energy efficacy fields indicated.

## Lamp measurement report - 18 April 2016

### Eulumdat light diagram

This light diagram below comes from the program Qlumedit, that extracts these diagrams from an Eulumdat file.



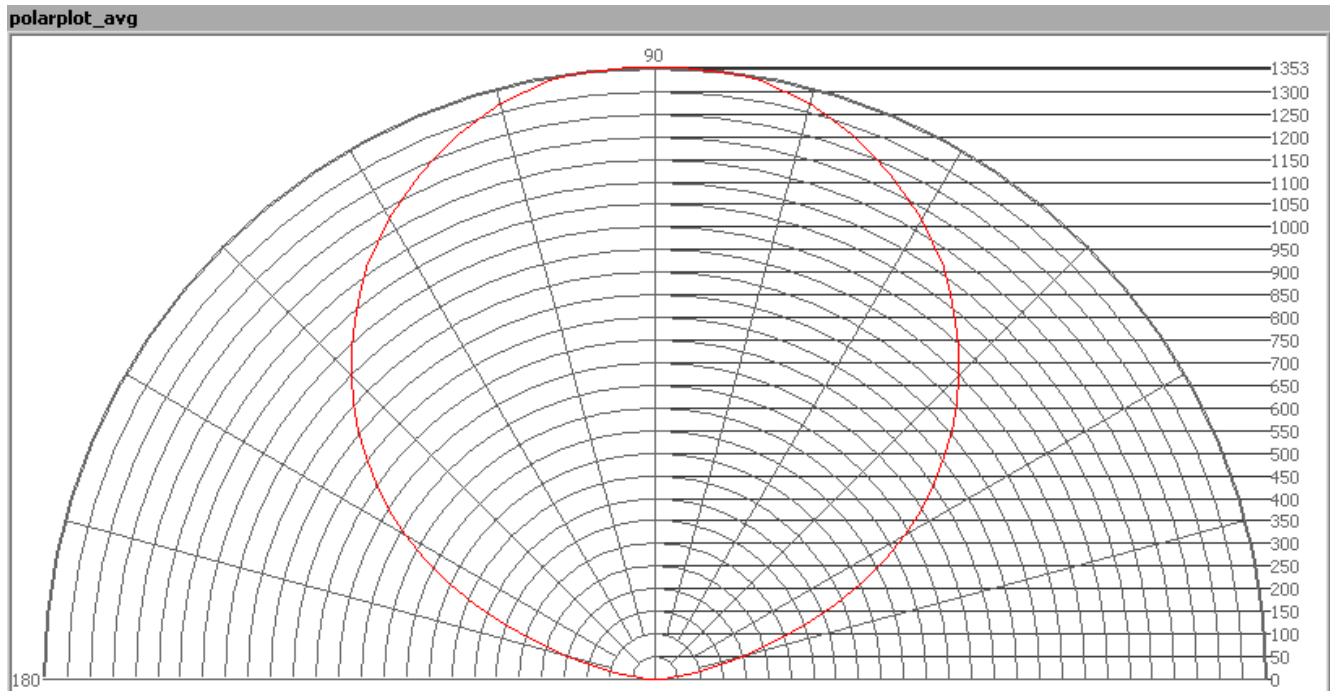
*The light diagram giving the radiation pattern.*

The light diagram indicates the beam in the C0-C180 plane (perpendicular to the length direction of the lamp) and in the plane perpendicular to that, the C90-C270 plane (along the length direction of the lamp).

## Lamp measurement report - 18 April 2016

### Illuminance $E_v$ at 1 m distance, or luminous intensity $I_v$

Herewith the plot of the *averaged* luminous intensity  $I_v$  as a function of the inclination angle with the light bulb.



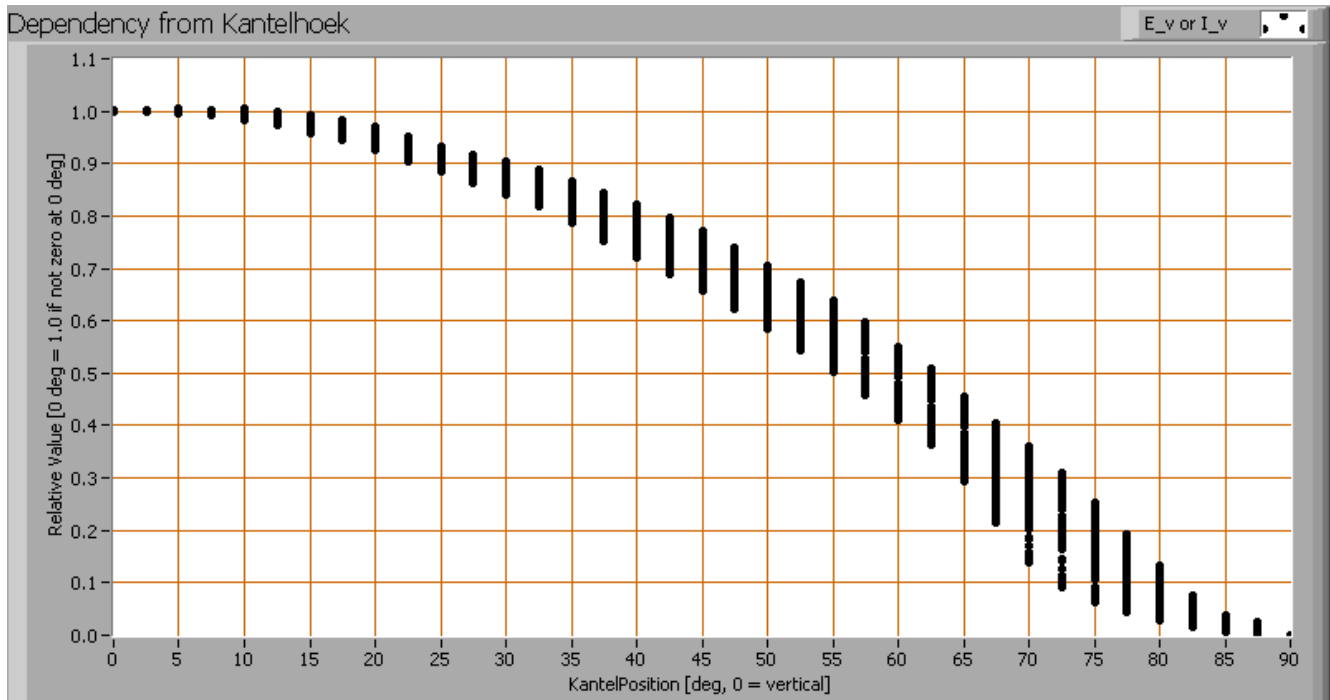
*The radiation pattern of the light bulb.*

This radiation pattern is the average of the light output of the light diagram given earlier. Also, in this graph the luminous intensity is given in Cd.

These averaged values are used (later) to compute the lumen output.



## Lamp measurement report - 18 April 2016



*Intensity data of every measured turn angle at each inclination angle.*

This plot shows per inclination angle the intensity measurement results for each turn angle at that inclination angle. There normally are differences in illuminance values for different turn angles. However for further calculations the averaged values will be used.

When using the average values per inclination angle, the beam angle can be computed, being 118 deg for the C0-C180 plane and 114 deg for the C90-C270 plane.

### Luminous flux

With the averaged illuminance data at 1 m distance, taken from the graph showing the averaged radiation pattern, it is possible to compute the luminous flux.

The result of this computation for this light spot is a luminous flux of 3936 lm.

### Luminous efficacy

The luminous flux being 3936 lm, and the consumed power of the lamp being 28.3 Watt, results in a luminous efficacy of 139 lm/Watt.

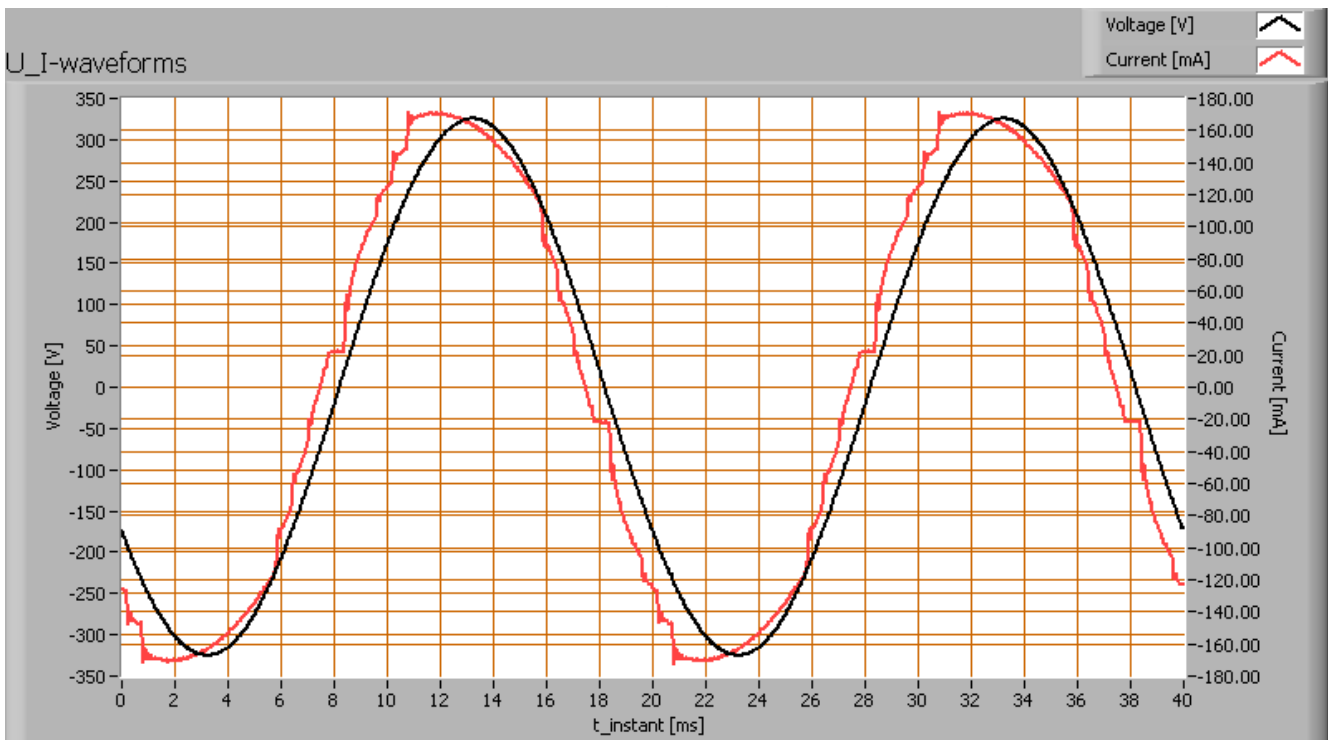
## Lamp measurement report - 18 April 2016

### Electrical properties

The power factor is 0.98. An electrical load with this power factor means that for every 1 kWh net energy consumed, there has been 0.22 kVAhr for reactive energy.

Lamp voltage	229.92 V
Lamp current	0.126 A
Power P	28.3 W
Apparent power S	29.0 VA
Power factor	0.98

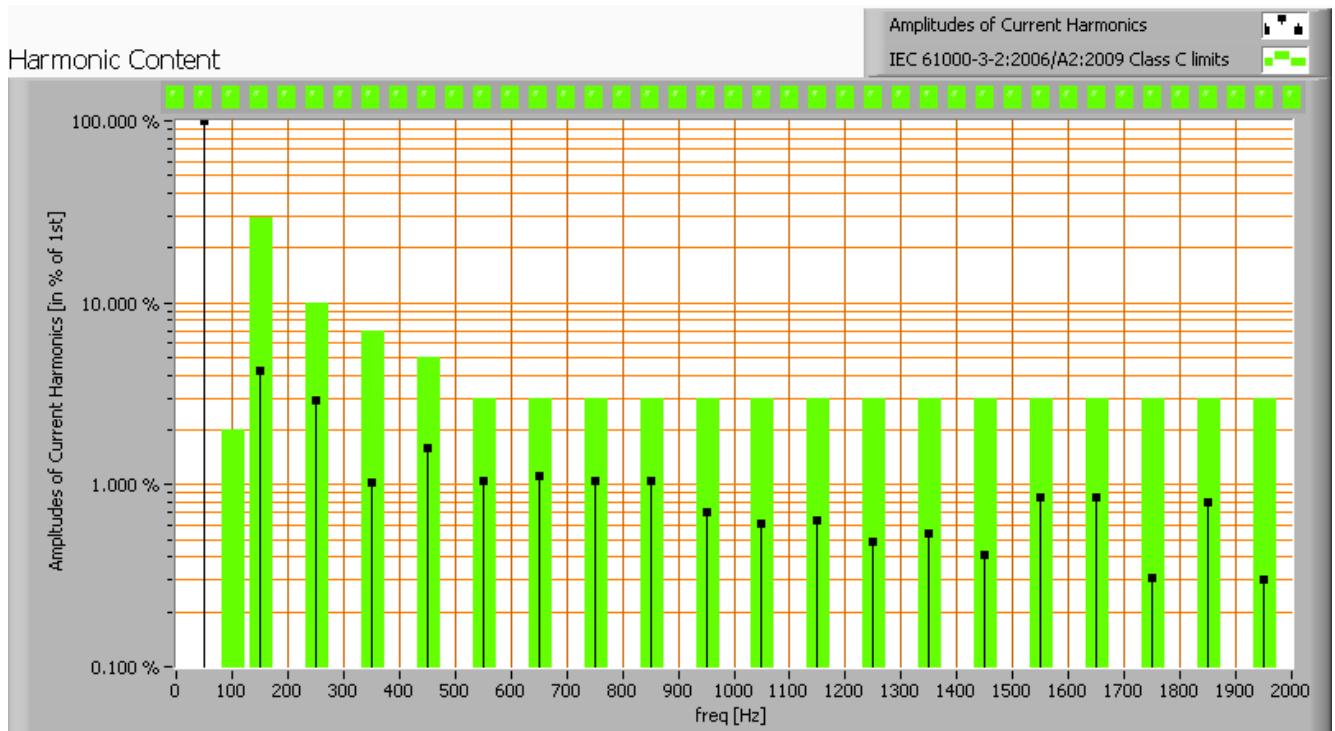
Of this lamp the voltage across and the resulting current through it are measured and graphed.



*Voltage across and current through the lightbulb*

This current waveform has been checked on requirements posed by the norm IEC 61000-3-2:2006 (including up to A2:2009).

## Lamp measurement report - 18 April 2016



*Harmonics in the current waveform and checked against IEC61000-3-2:2006 and A2:2009*

When the consumed power is 25 W there are limits for the harmonics and those are fulfilled.

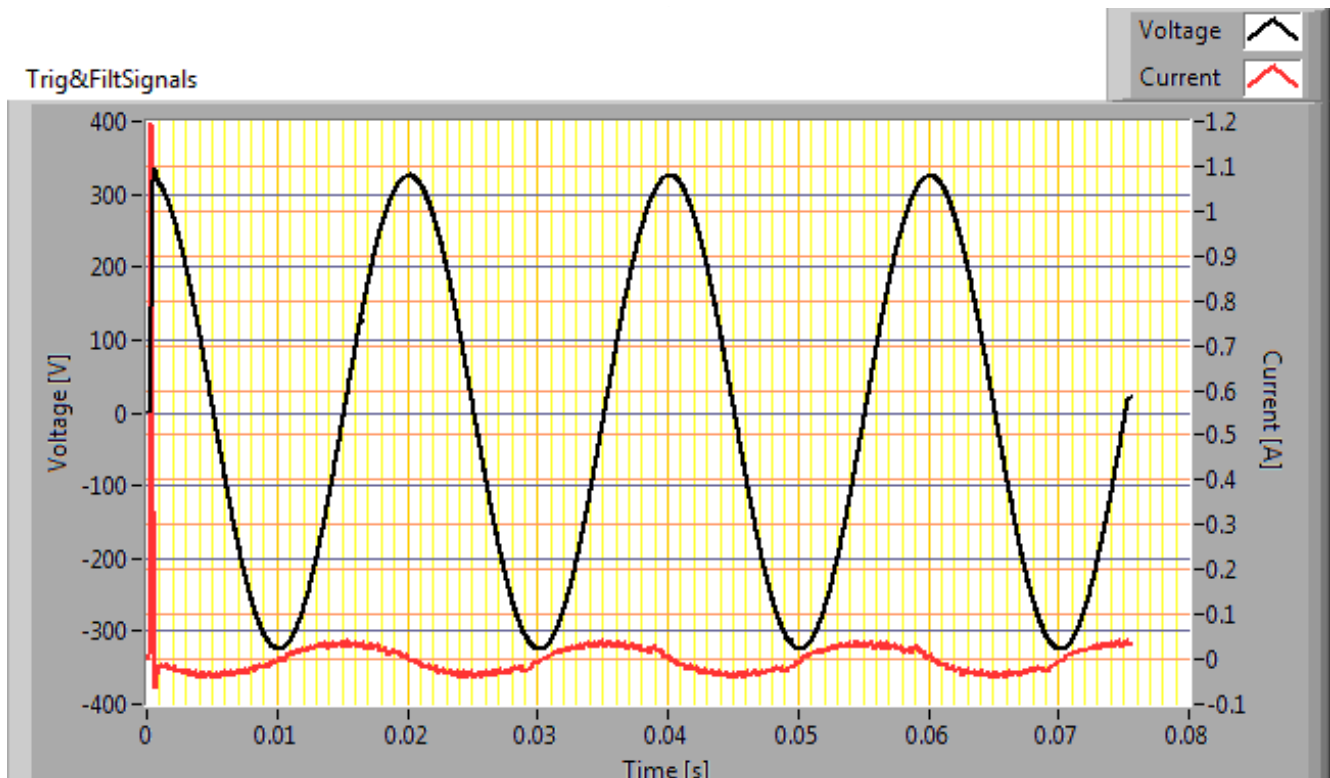
The Total Harmonic Distortion of the current is computed and its value is 6 %.

## Lamp measurement report - 18 April 2016

### Inrush current

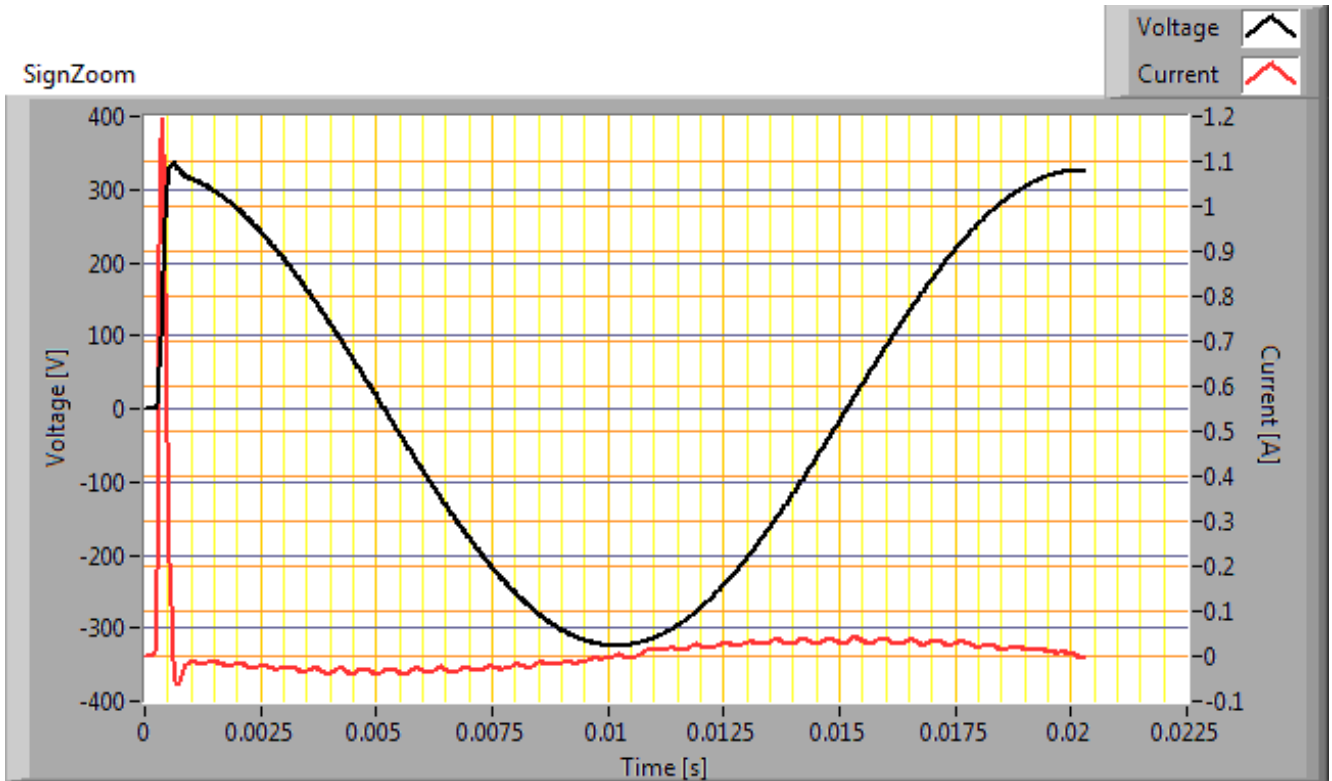
The inrush current has been measured for different voltage start angles; from 0 - 170 degrees with a 10 degrees step. The current- and voltage values have been acquired at a sample speed of 39.9 kS/s. Then this data has been fed into a second order 2kHz low pass Butterworth filter. This removes the current spikes that do not represent relevant values. The lamp was two minutes off before every inrush current measurement was made.

Test voltage	230.0 V	
Frequency of the voltage	50.0 Hz	
Maximum inrush current	1.197 A	This current has been found at a voltage start angle of 90 degrees.
Pulse width of max inrush current	3.0E-4 s	This is the time that the pulse is higher than 10 % of the max inrush current.
Minimal inrush current	0.068 A	This current has been found at a voltage start angle of 0 degrees.
$I^2 \times t$ after 10 ms at 0 deg voltage start angle	1.300E-5 A	This is the $I^2 \times t$ value when a zero crossing detector is used to start the voltage from 0 degrees.

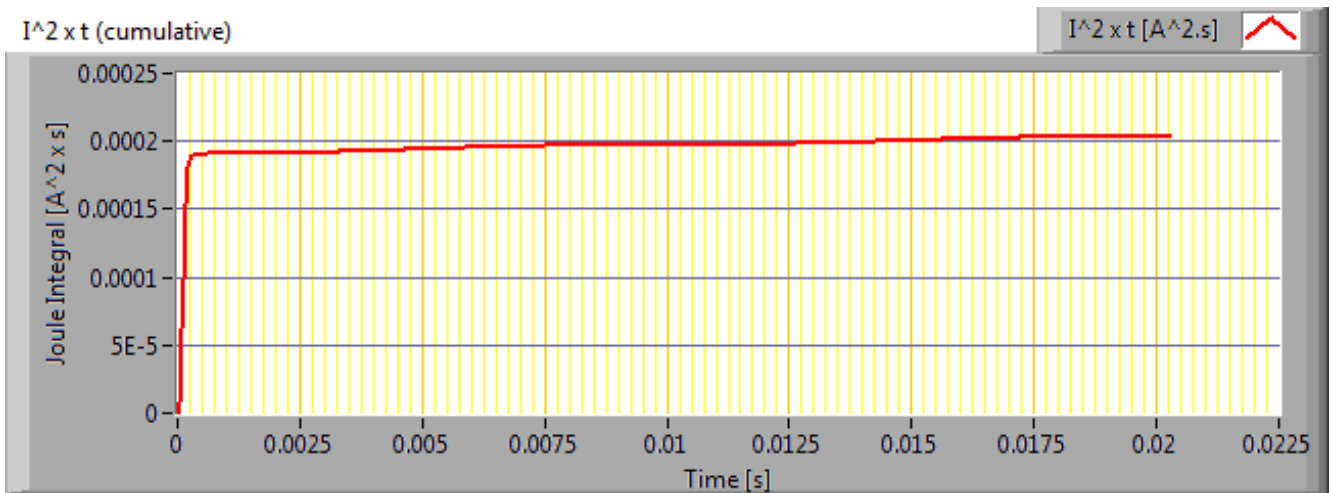


*Inrush current found at worst-case voltage start angle*

## Lamp measurement report - 18 April 2016



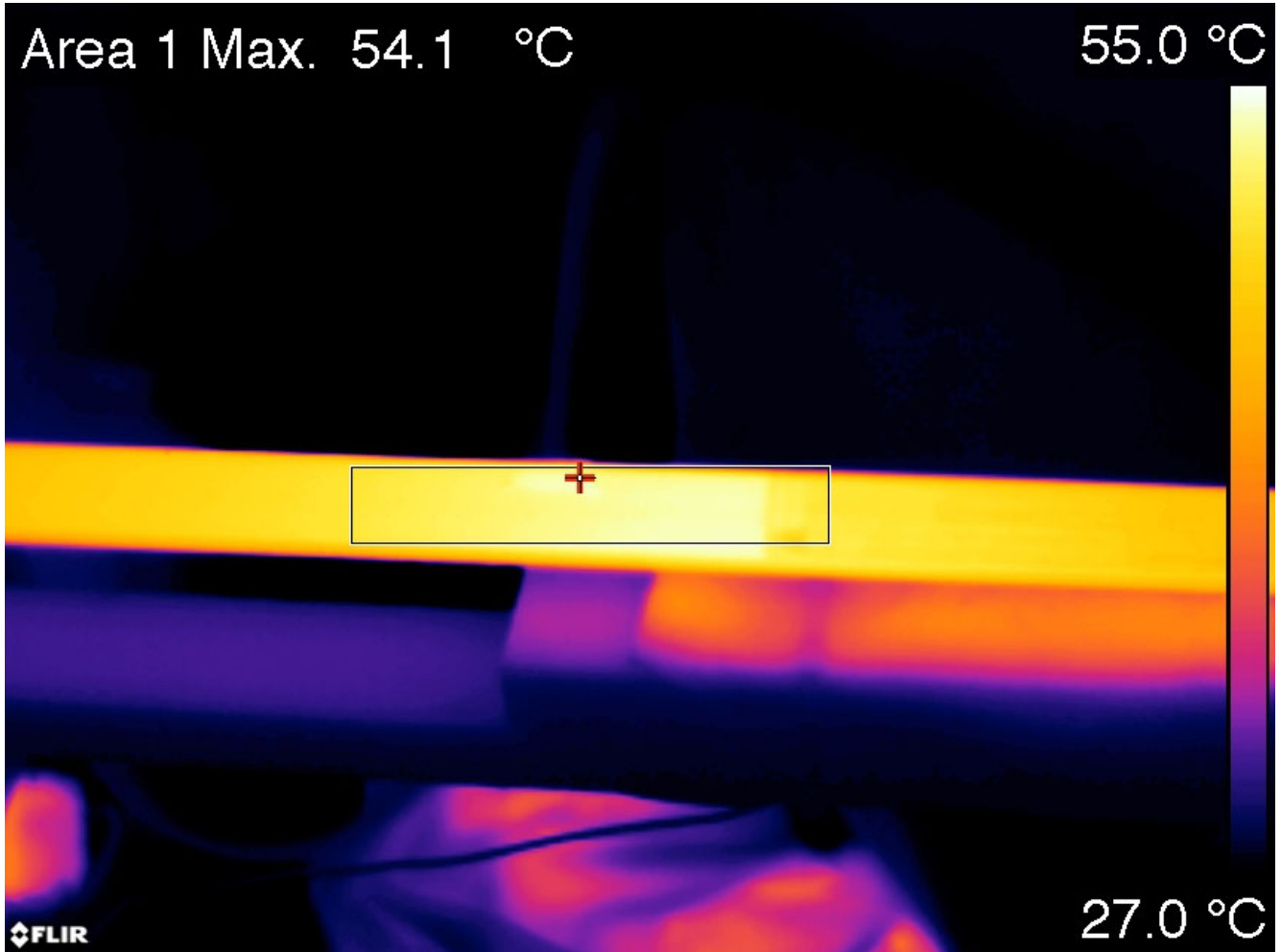
*First cycle of the maximum inrush current*



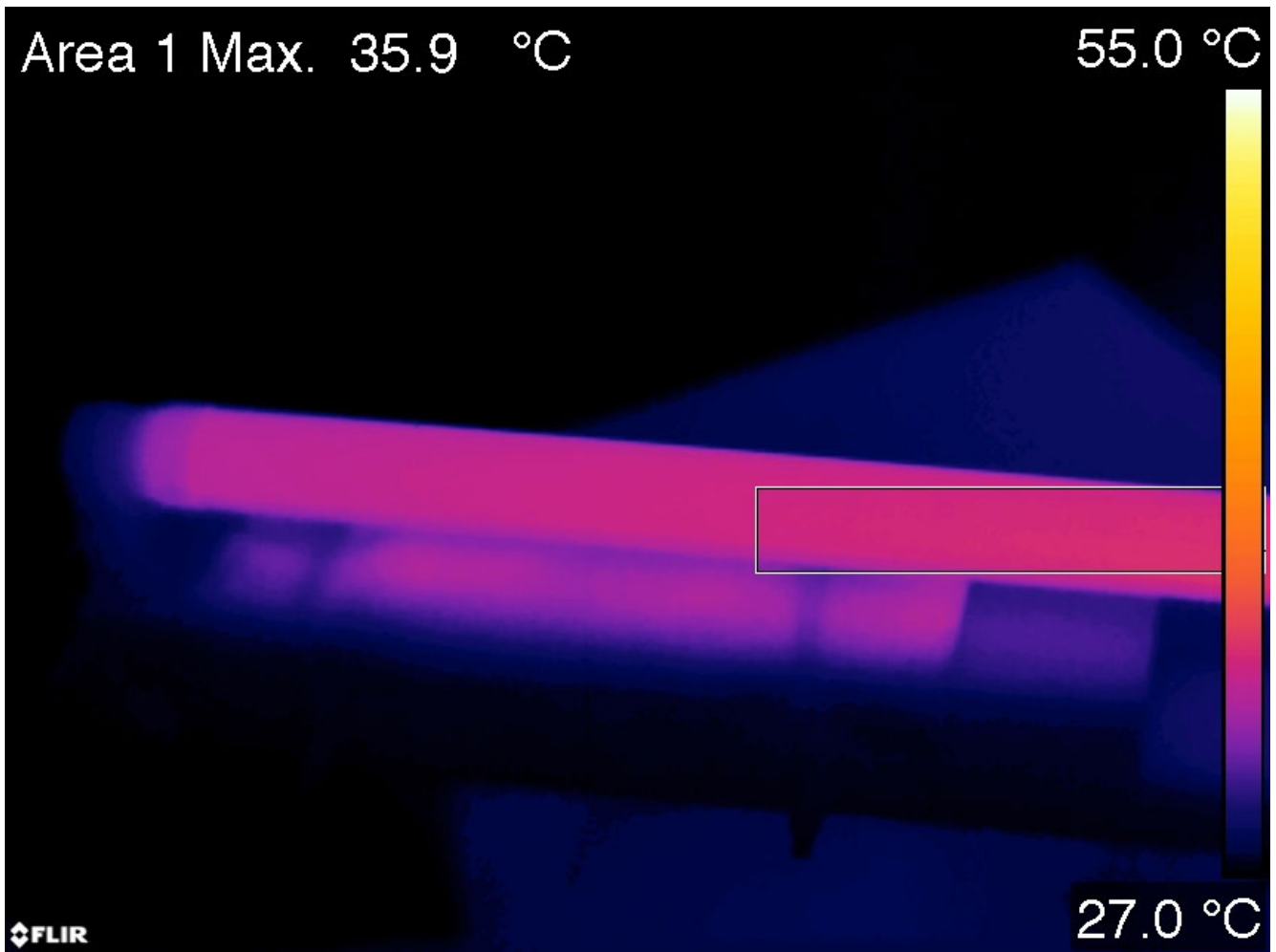
*The energy  $I^2t$  during the first 10 ms of the first current cycle*

## Lamp measurement report - 18 April 2016

### Temperature measurements lamp



## Lamp measurement report - 18 April 2016

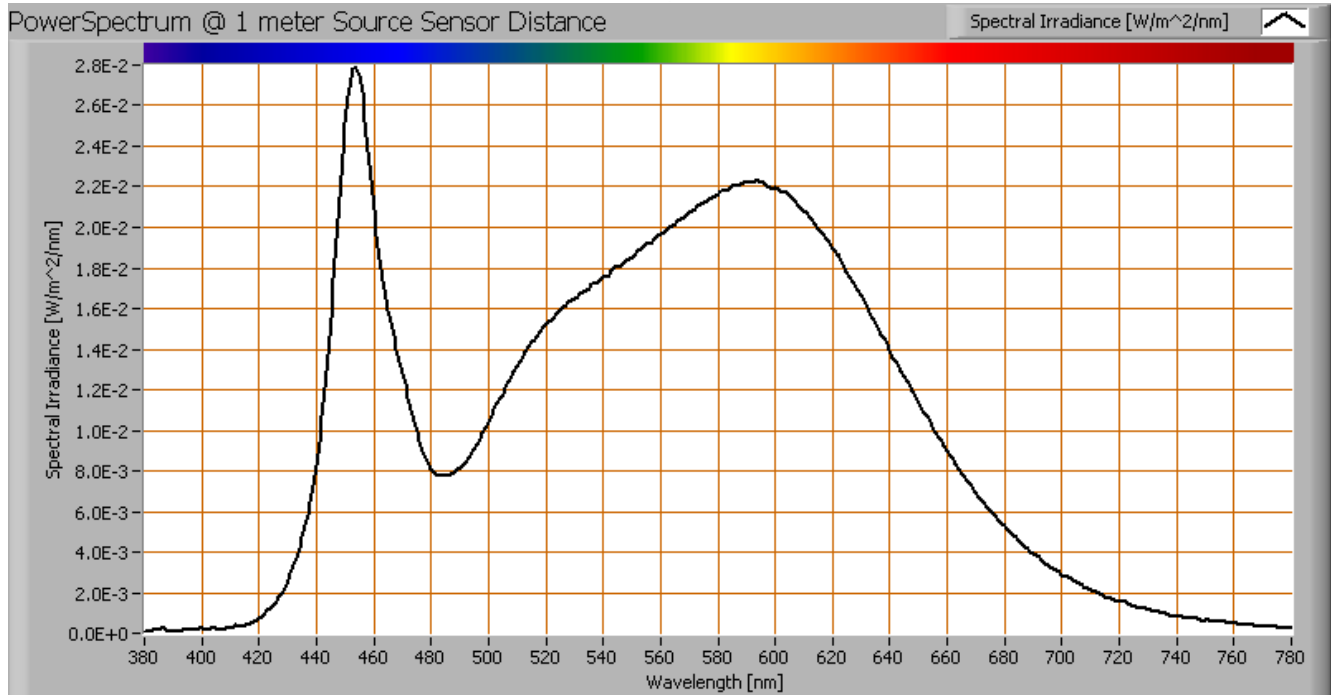


Temperature image(s).

status lamp	2 hours on
ambient temperature	27.8 deg C
reflected background temperature	27.8 deg C
camera	Flir T335
emissivity	0.95
measurement distance	1 m
IFOV_geometric	0.136 mm per 0.1 m distance
NETD (thermal sensitivity)	50 mK

## Lamp measurement report - 18 April 2016

### Color temperature and Spectral power distribution



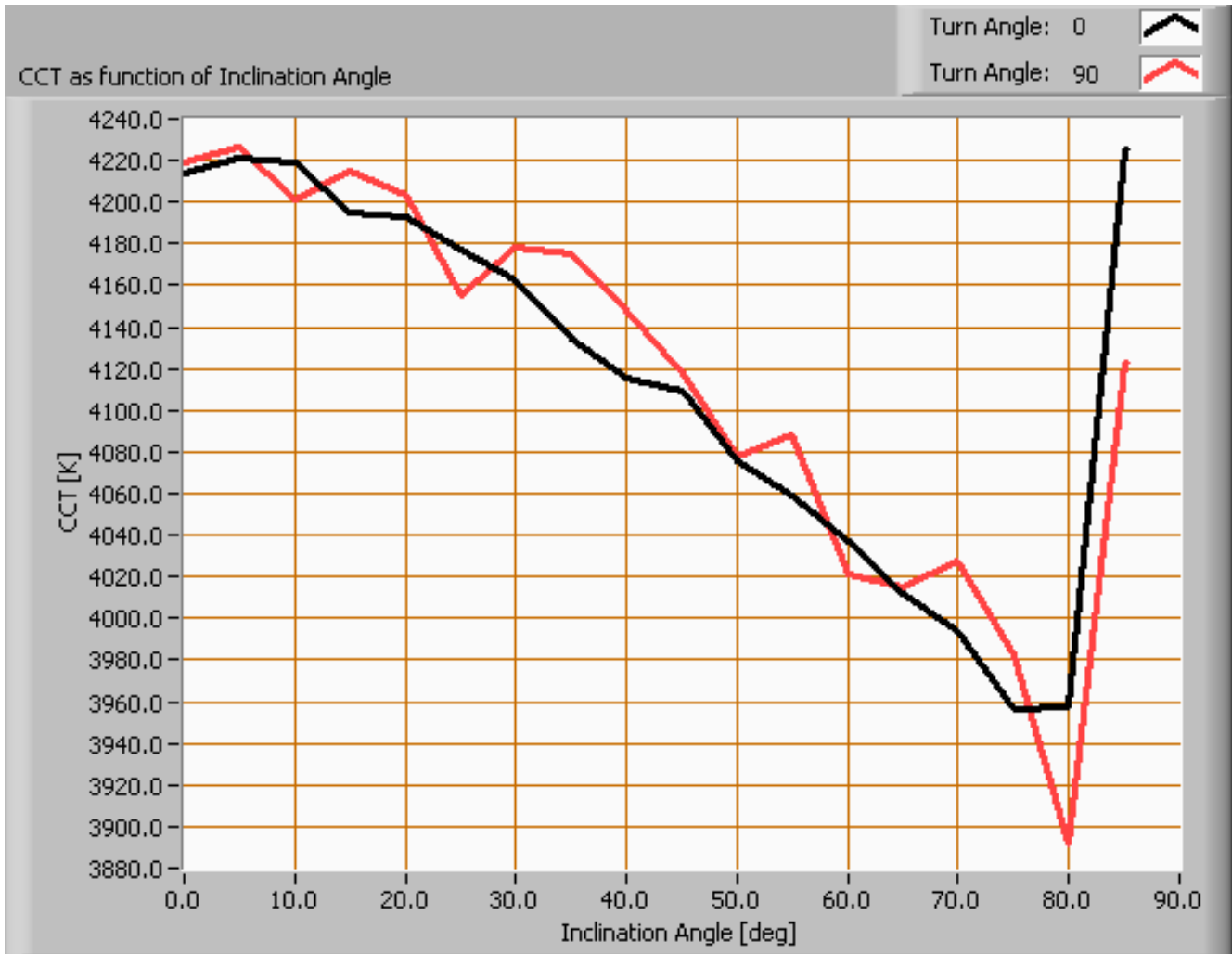
*The spectral power distribution of this light bulb, energies on y-axis valid at 1 m distance.*

The measured color temperature is 4141 K which is neutral white.

This color temperature is measured straight underneath the light bulb. Below a graph showing the color temperature for different inclination angles.



## Lamp measurement report - 18 April 2016



*Color temperature as a function of inclination angle.*

The color temperature is given for inclination angles up to 85 deg. Beyond that value the illuminance is so low ( 0.10 lux) that it has not been used for color determination of the light.

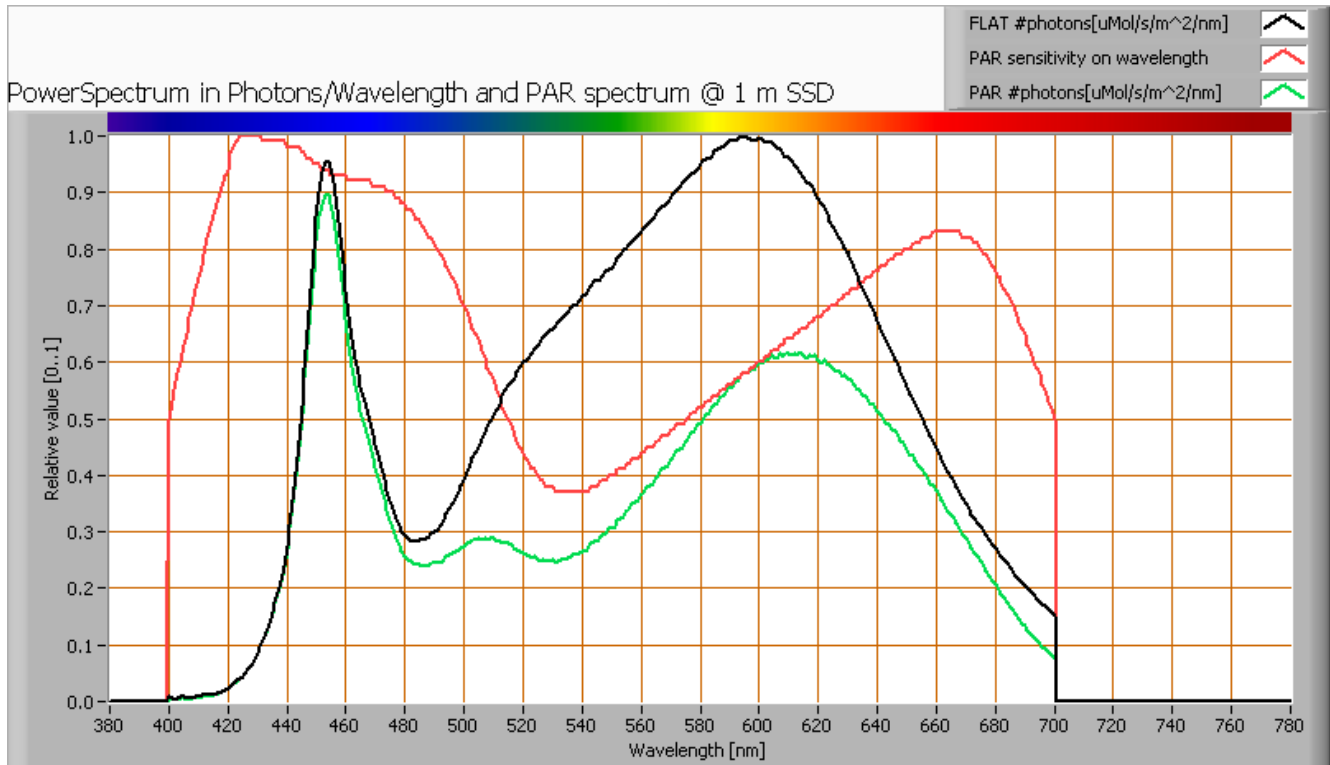
For the C0-C180 plane: the beam angle of 118 deg is equivalent to 58.9 deg inclination angle, which is the area where most of the light falls within. The maximum variation of color temperature in this inclination area is about 4 %.

For the C90-C270 plane: the beam angle of 114 deg is equivalent to 56.9 deg inclination angle, which is the area where most of the light falls within. The maximum variation of color temperature in this inclination area is about 4 %.

## Lamp measurement report - 18 April 2016

### PAR value and PAR spectrum

To make a statement how well the light of this light bulb is for growing plants, the PAR-area needs to be determined.



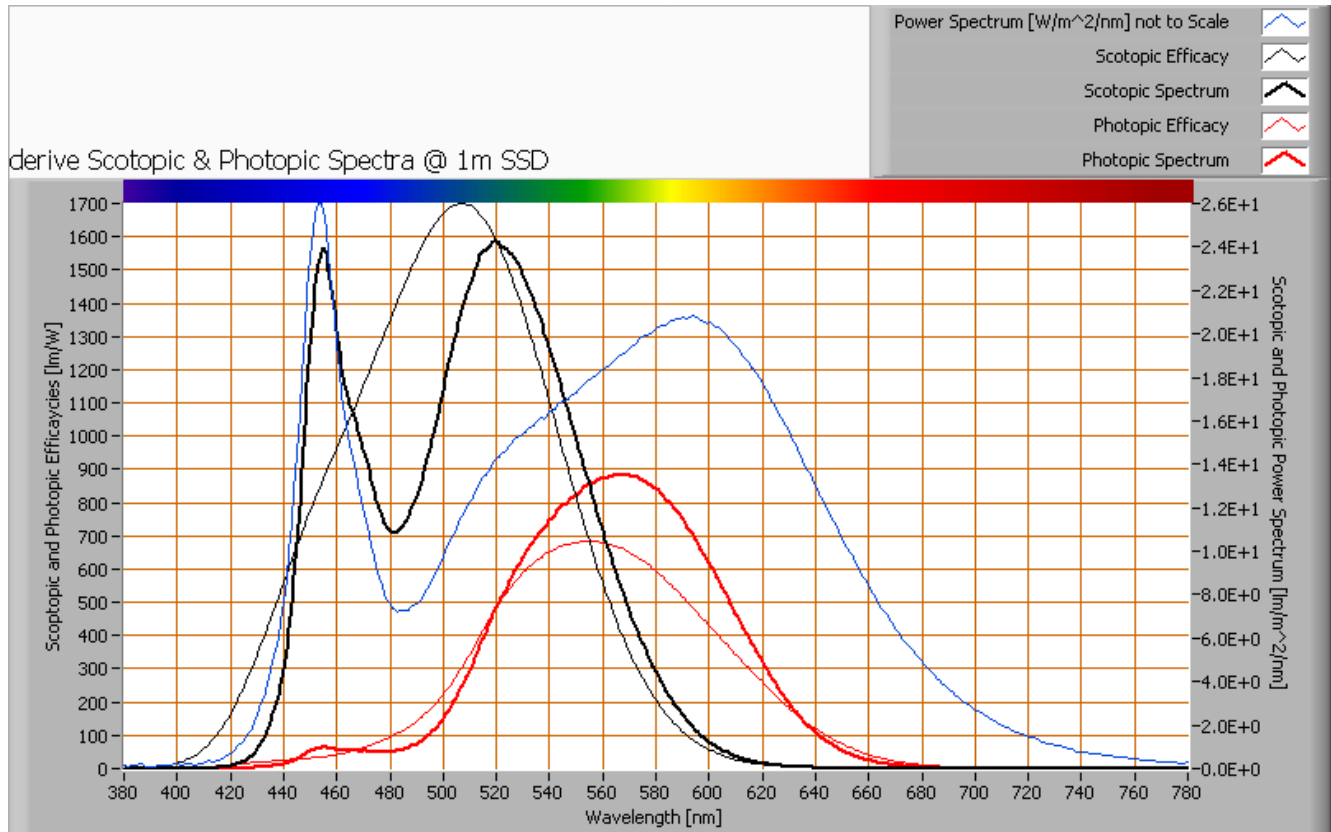
*The photon spectrum, then the sensitivity curve and as result the final PAR spectrum of the light of this light bulb*

parameter	value	unit
PAR number	11.8	uMol/s/m <sup>2</sup>
PAR photon current	34.3	uMol/s
PAR photon efficacy	1.2	uMol/s/W

The PAR efficiency is 64 % (valid for the PAR wave length range of 400 - 700 nm). This is the maximum percentage of the total of photons in the light that is effectively used by the average plant (since the plant might not take 100 % of the photons at the frequency where its relative sensitivity is 100 %).

## Lamp measurement report - 18 April 2016

### S/P ratio

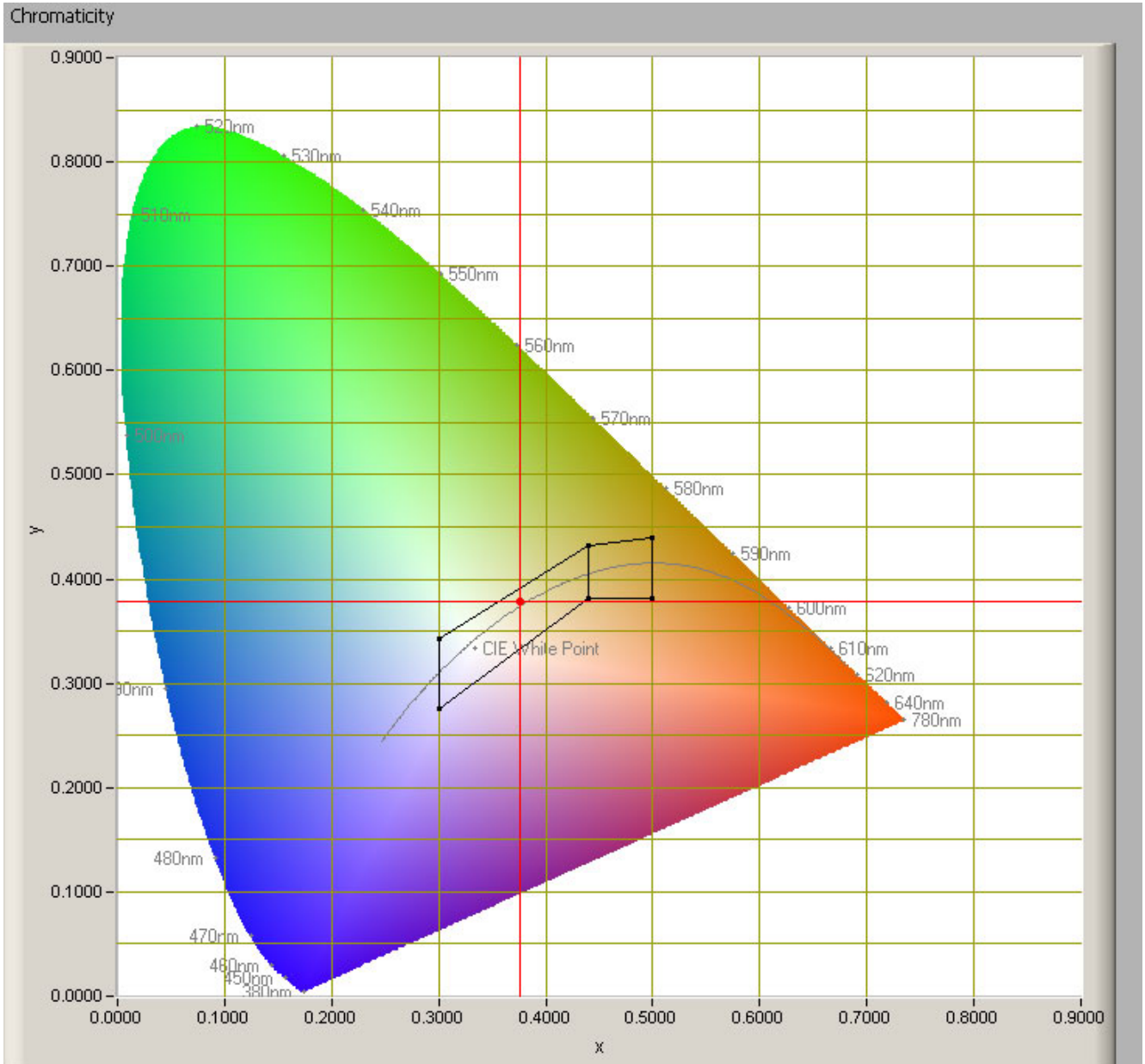


The power spectrum, sensitivity curves and resulting scotopic and photopic spectra (spectra energy content defined at 1 m distance).

The S/P ratio of the light coming from this lamp is 1.7.

## Lamp measurement report - 18 April 2016

### Chromaticity diagram



*The chromaticity space and the position of the lamp's color coordinates in it.*

The point of the light in this diagram is inside the area indicated with class A. This area indicates an area for signal lamps.

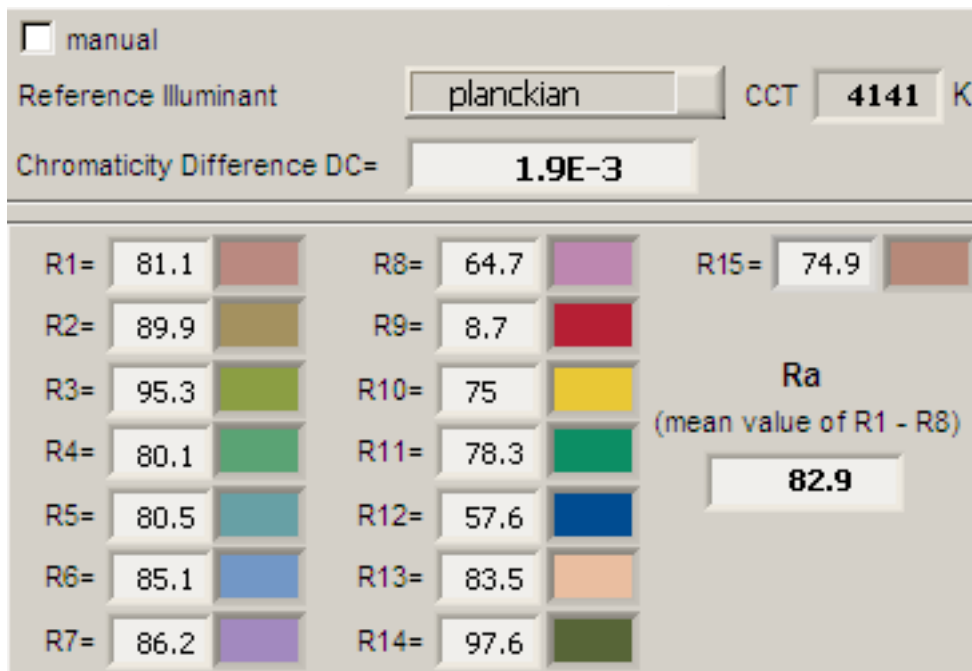
The color coordinates are  $x=0.3778$  and  $y=0.3756$ .

## Lamp measurement report - 18 April 2016

### Color Rendering Index (CRI) or also Ra

Herewith the image showing the CRI as well as how well different colors are represented (rendered). The higher the number, the better the resemblance with the color when a black body radiator would have been used (the sun, or an incandescent lamp)

Each color has an index  $R_x$ , and the first 8 indexes ( $R_1 \dots R_8$ ) are averaged to compute the  $R_a$  which is equivalent to the CRI.



*CRI of the light of this lightbulb.*

This value of 83 indicates how well the light of this lamp can render well a set of reference colors, this in comparison with the light of a reference source (for color temperatures 5000K a black radiator is used as reference and for color temperatures 5000K the sun or the light outside during the day).

The value of 83 is bigger than the value of 80 that is considered as a minimum for working areas in general.

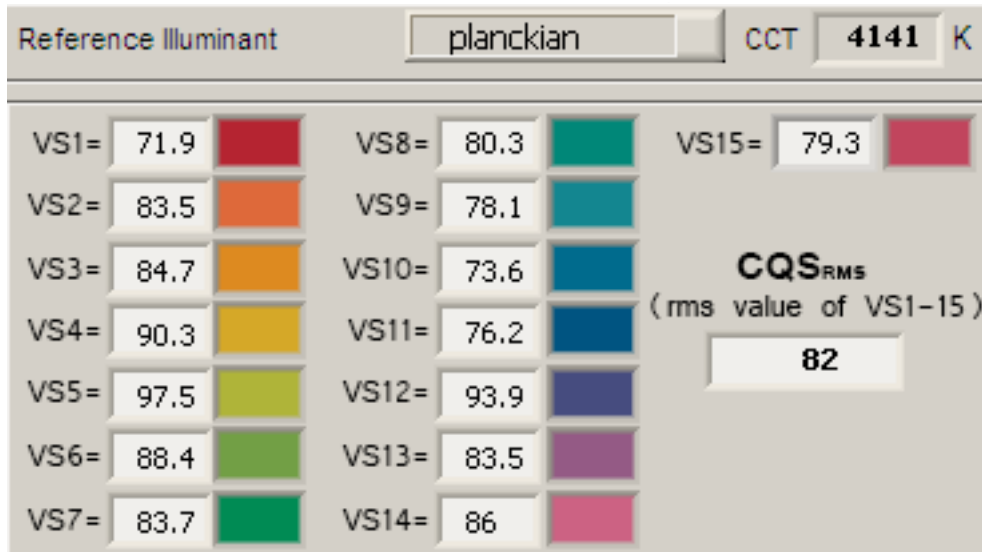
Note: the chromaticity difference is 0.0019 and indicates the distance to the Planckian Locus. There is a value mentioned of max 5.4E-3 in section 5.3 of CIE 13.3-1995 however not further explanation of it.

An other reference with signal lights as a reference is given in the chromaticity diagram.

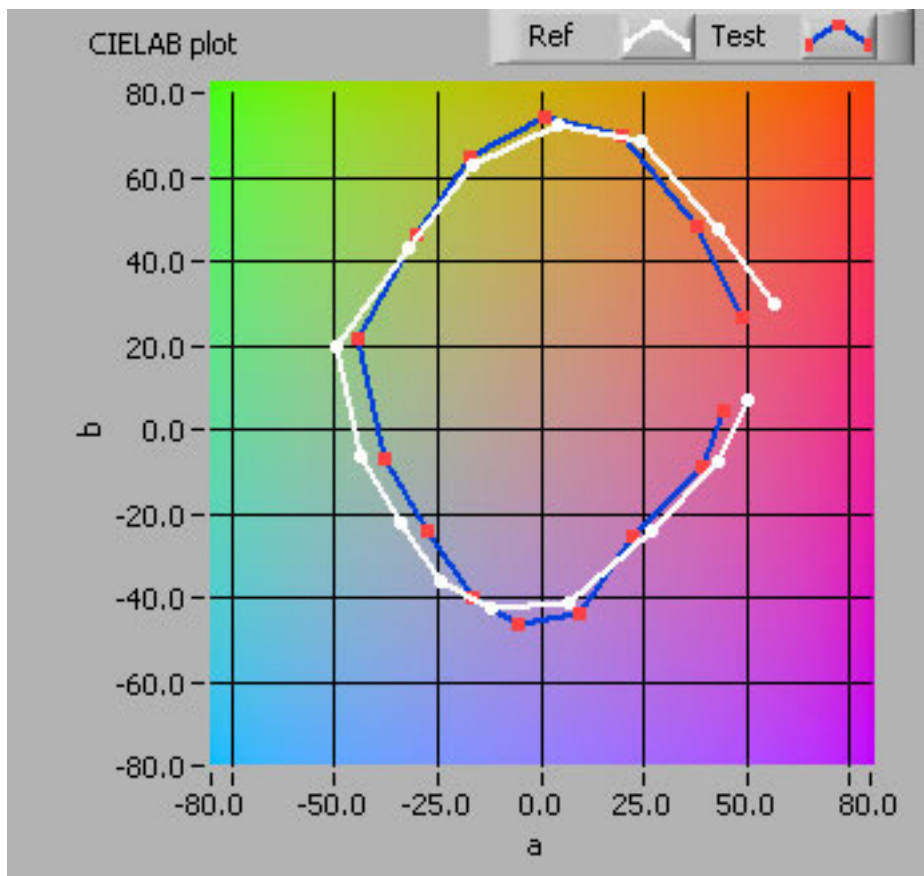
## Lamp measurement report - 18 April 2016

### Color Quality Scale

(v9.0.3) is an improved indicator (over CRI) of how well colors are rendered.



CQS-values of the light of this light bulb.

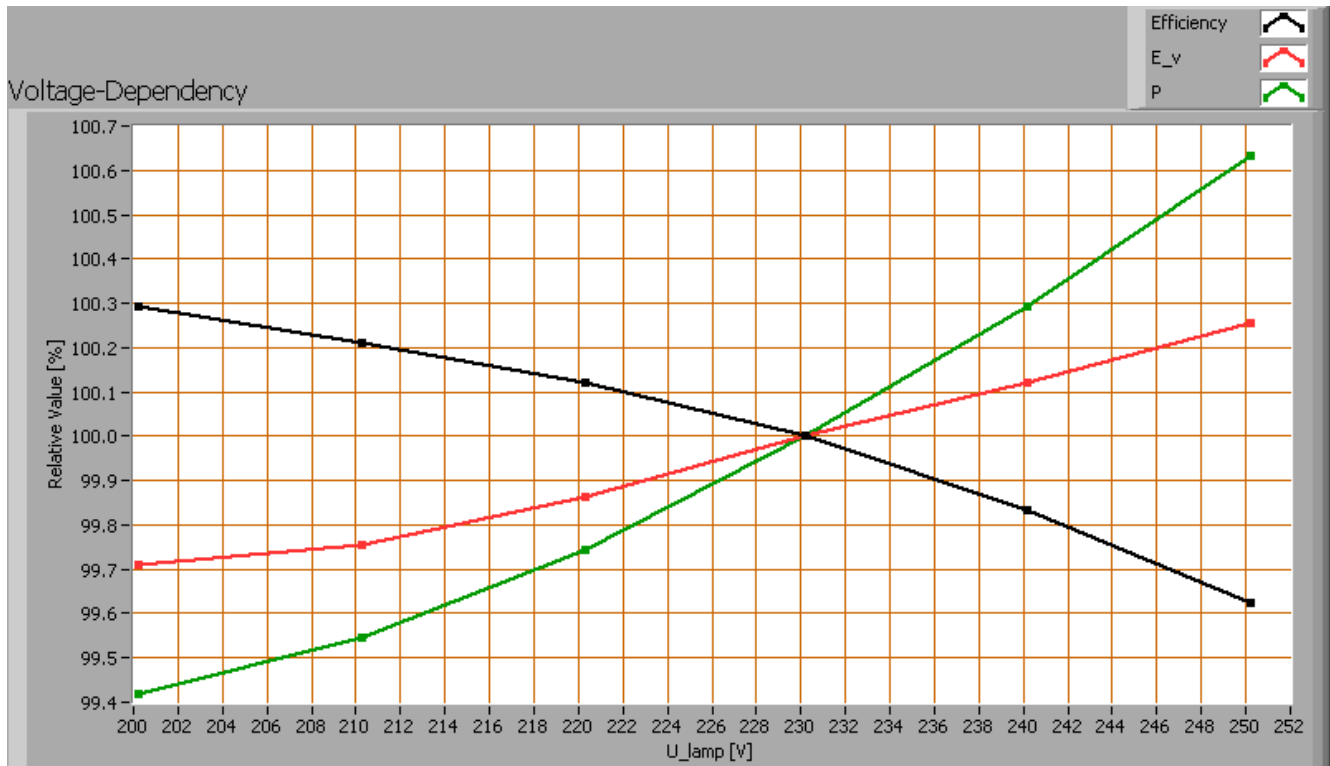


CQS-values for the light of this light bulb compared with those of a reference source with the same color temperature.

## Lamp measurement report - 18 April 2016

### Voltage dependency

The dependency of a number of lamp parameters on the lamp voltage is determined. For this, the lamp voltage has been varied and its effect on the following light bulb parameters measured: illuminance  $E_v$  [lx], the lamp power  $P$  [W] and the luminous efficacy [lm/W] (this latter is estimated here by dividing the found  $E_v$  value by  $P$ ).



*Lamp voltage dependencies of certain light bulb parameters*

There is no (significant) dependency of the illuminance when the power voltage varies between 200 - 250 V AC.

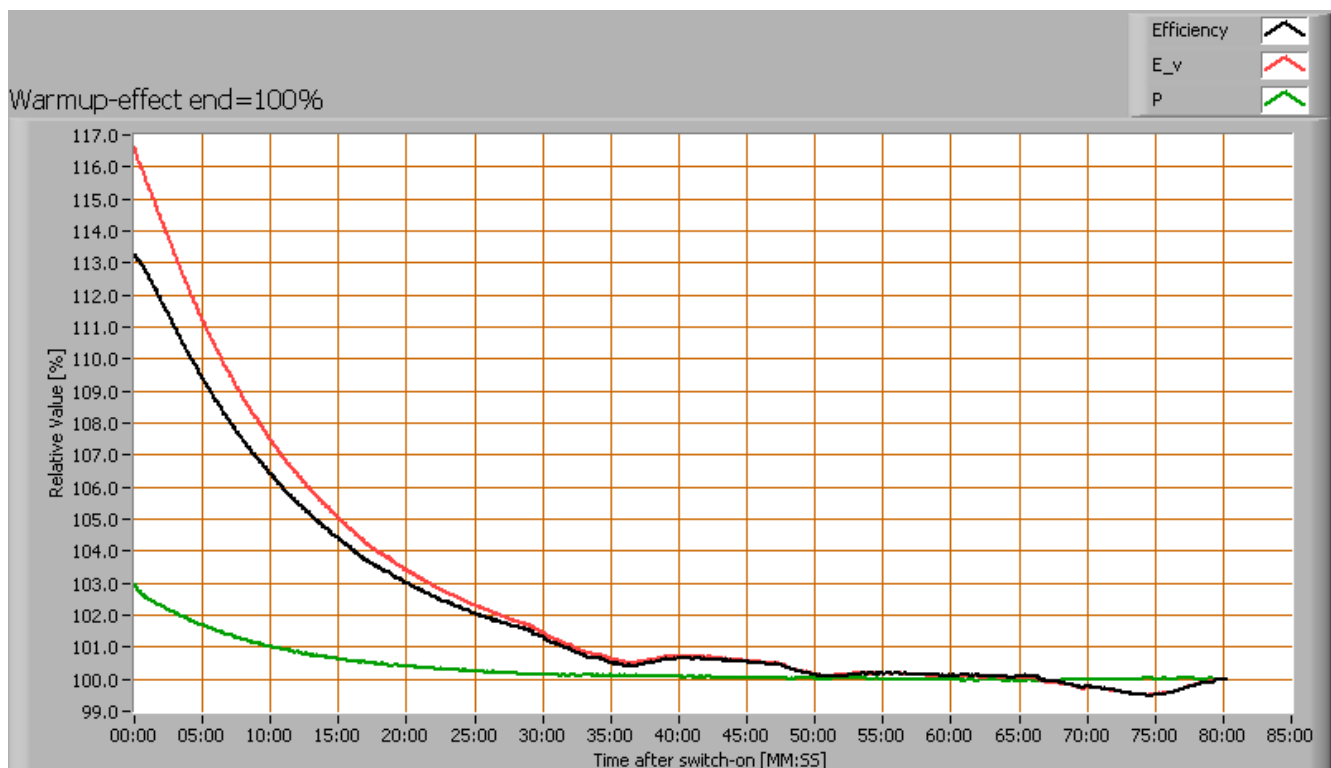
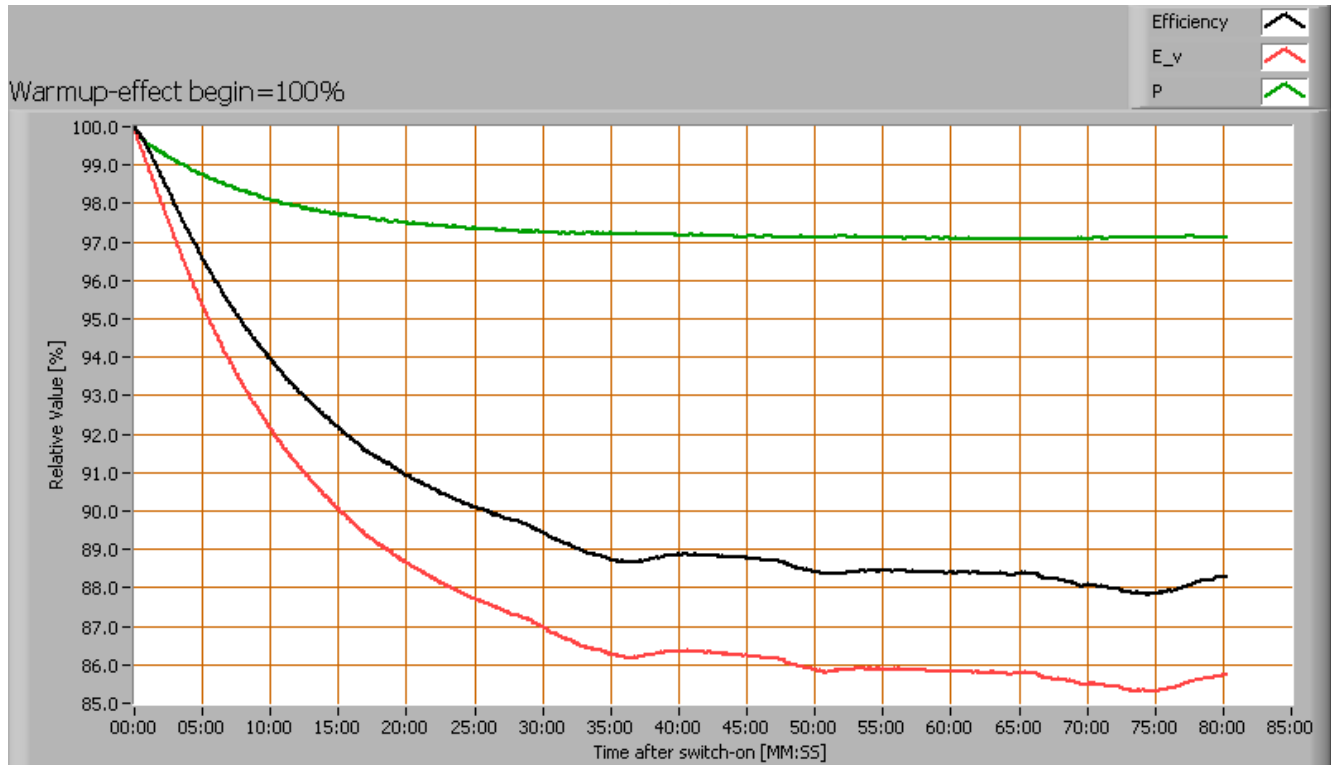
There is no (significant) dependency of the consumed power when the power voltage varies between 200 - 250 V AC.

When the voltage varies abruptly with + or - 5 V AC then this results in a variation of the illuminance of maximally 0.1 %. This difference in illuminance is not visible (when it occurs abruptly).

## Lamp measurement report - 18 April 2016

### Warm up effects

After switch on of a cold lamp, the effect of heating up of the lamp is measured on illuminance  $E_v$  [lx], the lamp power  $P$  [W] and the luminous efficacy [lm/W].



Effect of warming up on different light bulb parameters. In the first graph the 100 % level is put at begin, and in the last graph the 100 % level is put at the end.

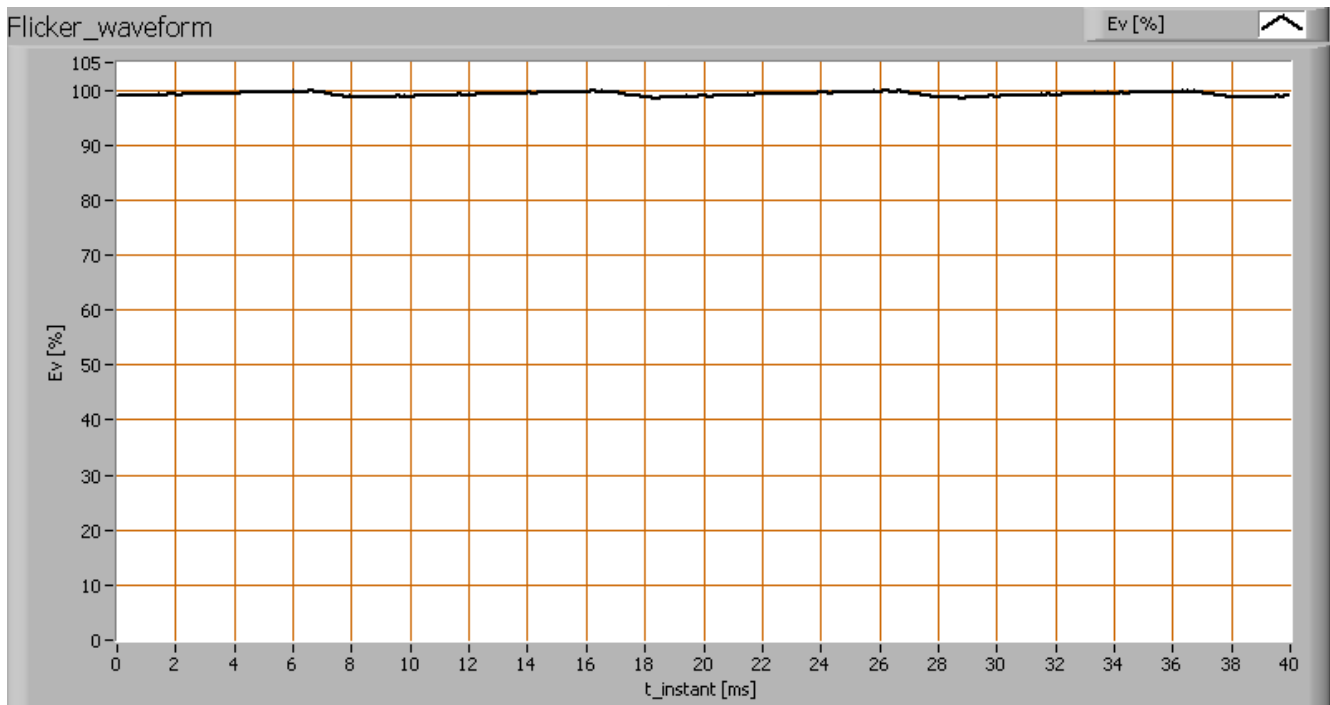


## Lamp measurement report - 18 April 2016

During the warmup time the illuminance varies during 31 minutes and decreases with 14 %. During the warmup time the power doesn't vary significantly ( 5 %). The variation in efficacy (calculated as indication by simply dividing the illuminance by the power) during the warming up is -12 %. A very high negative value indicates a significant decrease for instance due to heating up of the lamp (decrease of lifetime).

### Measure of flickering

An analysis is done on the measure of flickering of the light output by this light bulb.



*The measure of fast illuminance variation of the light of the light bulb*

parameter	value	unit
Flicker frequency	99.9	Hz
Illuminance modulation index	1	%
Flicker index	0.001	[-]

The illuminance modulation index is computed as:  $(\max_{E_v} - \min_{E_v}) / (\max_{E_v} + \min_{E_v})$ .

## Lamp measurement report - 18 April 2016

### Melanopic effect

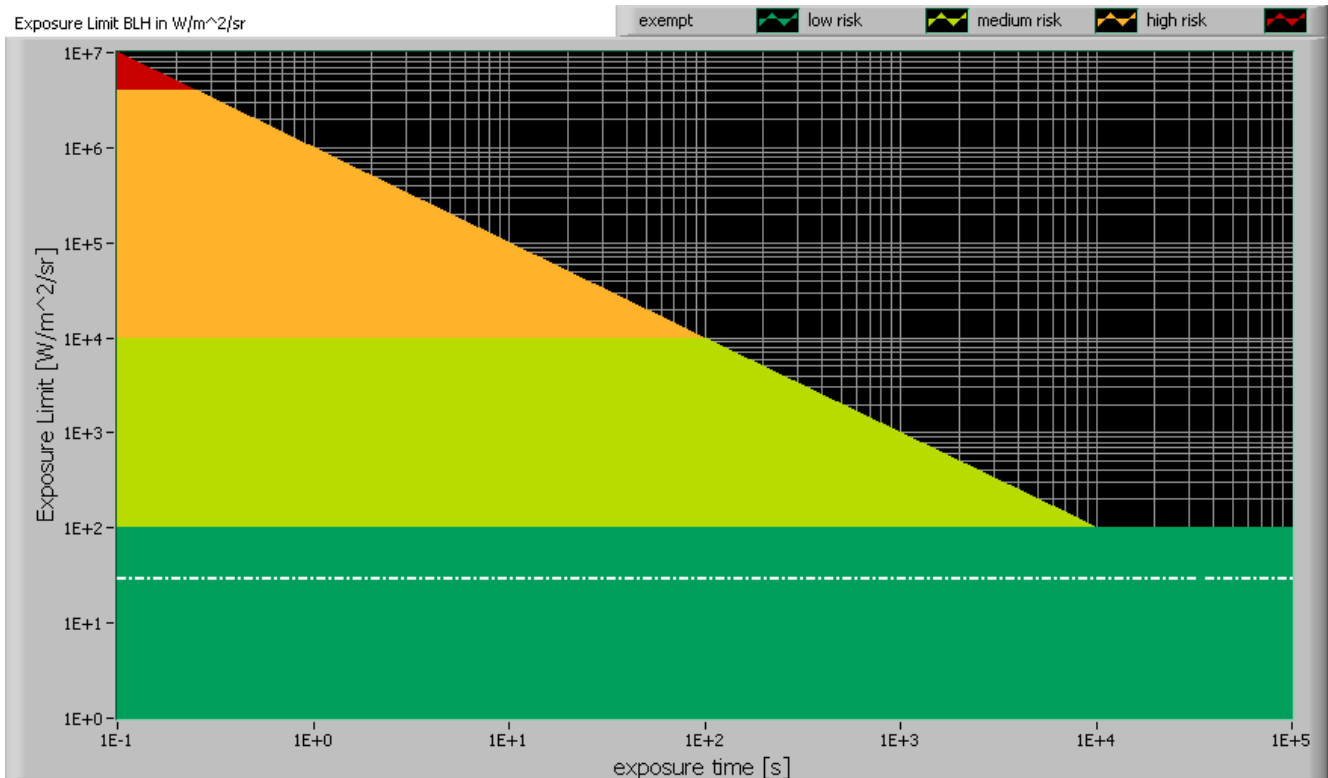
The melanopic effect shows the level of impact the light of this lamp can have on the day-night rhythm of human beings (as well as the suppression of melatonin production). The important parameters (according to norm DIN SPEC 5031-100:2015-08):

melanopic effect factor	0.584
k_mel trans (25 years)	1.048
k_mel trans (32 years)	1.000
k_mel trans (50 years)	0.846
k_mel trans(75 years)	0.610
k_mel trans(90 years)	0.481
k_pupil(25 years)	1.088
k_pupil(32 years)	1.000
k_pupil(50 years)	0.792
k_pupil(75 years)	0.543
k_pupil(90 years)	0.416

## Lamp measurement report - 18 April 2016

### Blue Light Hazard

The amount of blue light and the harm it can cause on the retina has been determined. Herewith the results.



The level of blue light of this lamp related to the exposure limit and the different classification areas.

L_lum0 [mm]	3	Dimension of brightest part of lamp in C0-C180 direction.
L_lum90 [mm]	715	Dimension of brightest part of lamp in C90-C270 direction.
SSD_500lx [mm]	1645	Calculated distance where $E_v = 500$ lux. This computation is valid when it is in the far field of the lamp. Note: if this value 200 mm then the distance of 200 mm is taken as proposed in the norm IEC 62471:2006.
Start of far field [mm]	3575	Minimum distance at which the lamp can be seen as a point source. In this area the $E_v$ is linearly dependent from $(1/\text{distance})^2$ .
300-350 nm values stuffed with 0s	yes	In the event OliNo has measured with a SpB1211 spectrometer without UV option then the irradiance data of 300-349 nm is missing. For lamps where there is already no energy content near 350 nm, the values 300-349 can also be set at zero then.
alpha_C0-C180 [rad]	0.002	(Apparent) source angle in C0-C180 direction.
alpha_C90-C270 [rad]	0.435	(Apparent) source angle in C90-C270 direction.

## Lamp measurement report - 18 April 2016

alpha_AVG [rad]	0.051	Average (apparent) source angle. If average $\geq 0.011$ rad then the exposure limit is computed with radiance $L_b$ . Otherwise with irradiance $E_b$ .
Exposure value [ $W/m^2/sr$ ]	2.91E+1	Blue Light Hazard value for this lamp, measured straight underneath the lamp. Computation is referenced to $L_b$ . Because the distance at 500 lux is in the near field, then this exposure value is too pessimistic and should be lower.
Blue Light Hazard risk group	0	0=exempt, 1=low, 2 = moderate, 3=high risk.

### Extra



*Additional photos.*

#### Disclaimer

The information in this OliNo report is created with the utmost care. Despite this, the information could contain inaccuracies. OliNo cannot be held liable in this instance nor can the data in this report be legally binding.

We strive to adhere to all of the conditions of any copyright holder in the publication of any illustration/article or item. In the event that we unintentionally violate said copyright holder's conditions in our articles, we kindly ask to be contacted here at OliNo so that we can resolve any disputes, issues or misunderstandings.

#### License

It is permitted ONLY to use or publish this report in its entirety and in unaltered form via internet or other digital or written media in any form. To guarantee the reliability and accuracy of the report, it is strictly prohibited to change or alter parts of the report and/or republish it in a modified content.